



10641 Highway 36  
Covington, GA  
30014

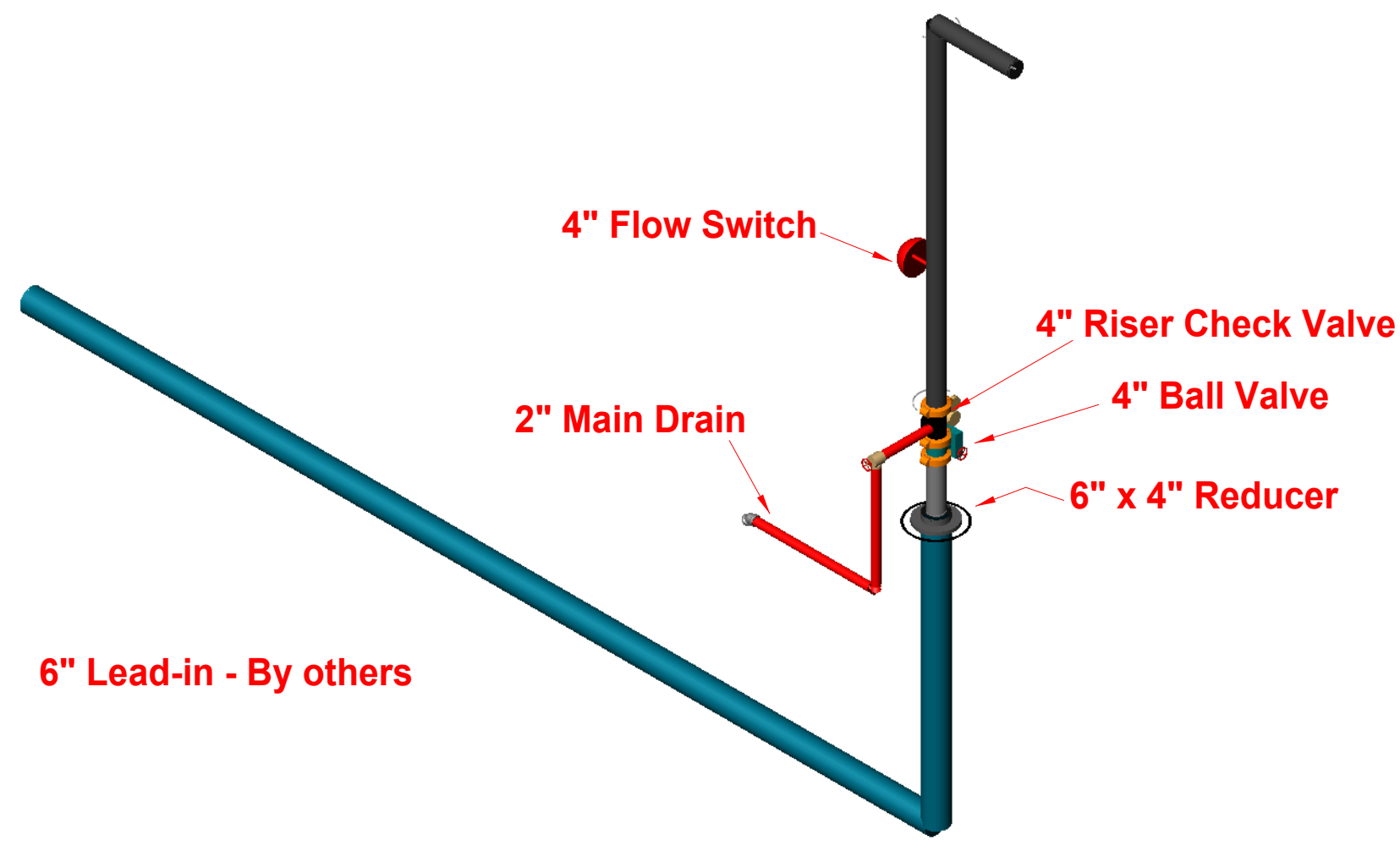
[www.sunbeltbuilders.com](http://www.sunbeltbuilders.com)

t 770.786.3031  
f 770.786.3046

## Senior Services Enrichment Center

FireAway  
636 Moore Street  
Oxford, GA 30054  
ph: 770-918-0527  
Paul Green, Jr.  
[paul@atlantafiresprinklers.com](mailto:paul@atlantafiresprinklers.com)

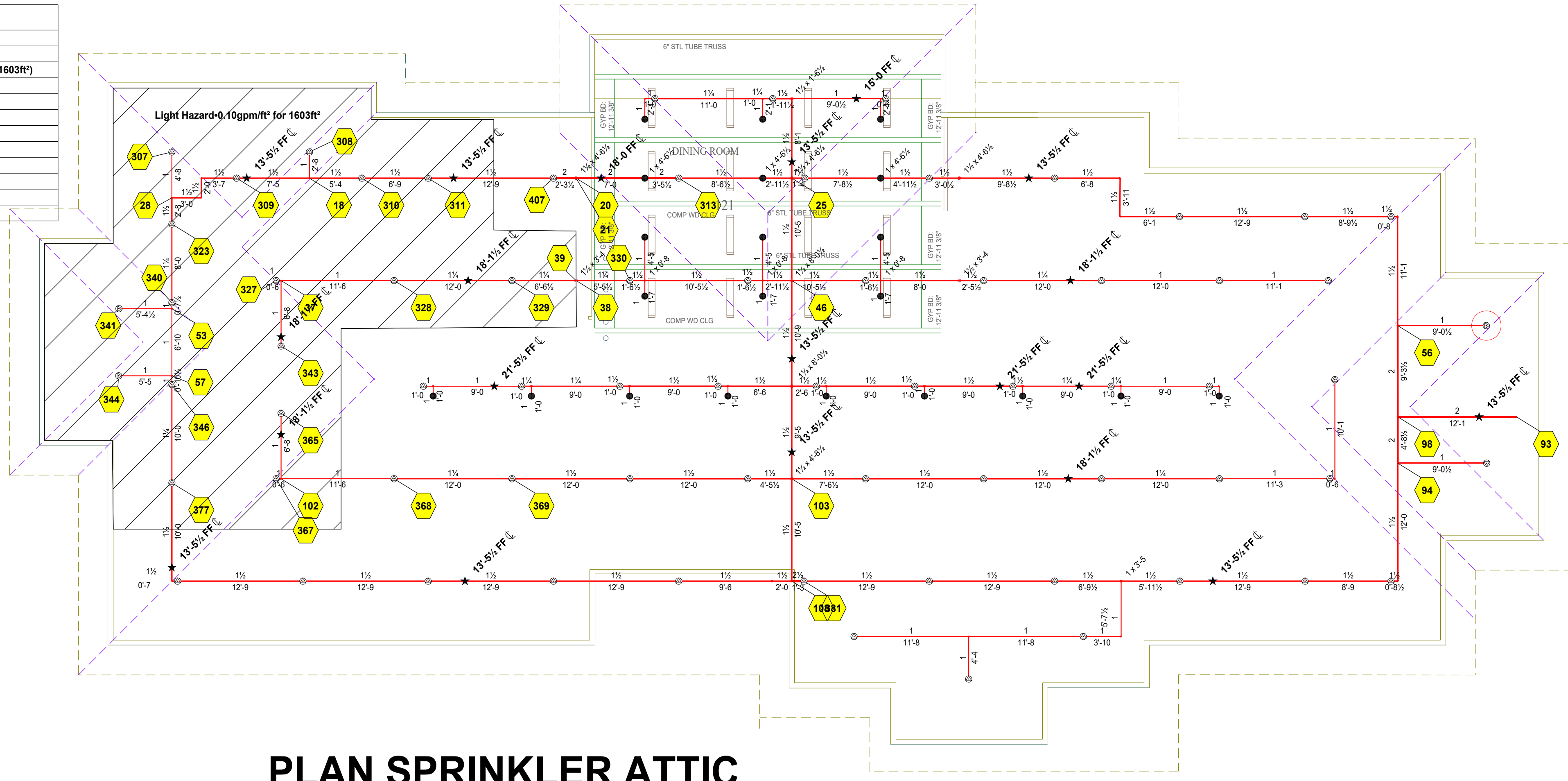
### 21-1313 Fire Alarm As-Built



### SPRINKLER RISER

Sprinkler Legend											
Symbol	Manufacturer	SIN	Model	Quantity	K-Factor	Type	Size	Response	Finish	Temperature	Note
●	Victaulic	V2708	FL-QR	95	5.6	Pendent	1/2"	Quick	Chrome	175°F	
○	Reliable	RA1423	F1FR42	70	4.2	Upright	1/2"	Quick	Brass	200°F	
				Total = 165							

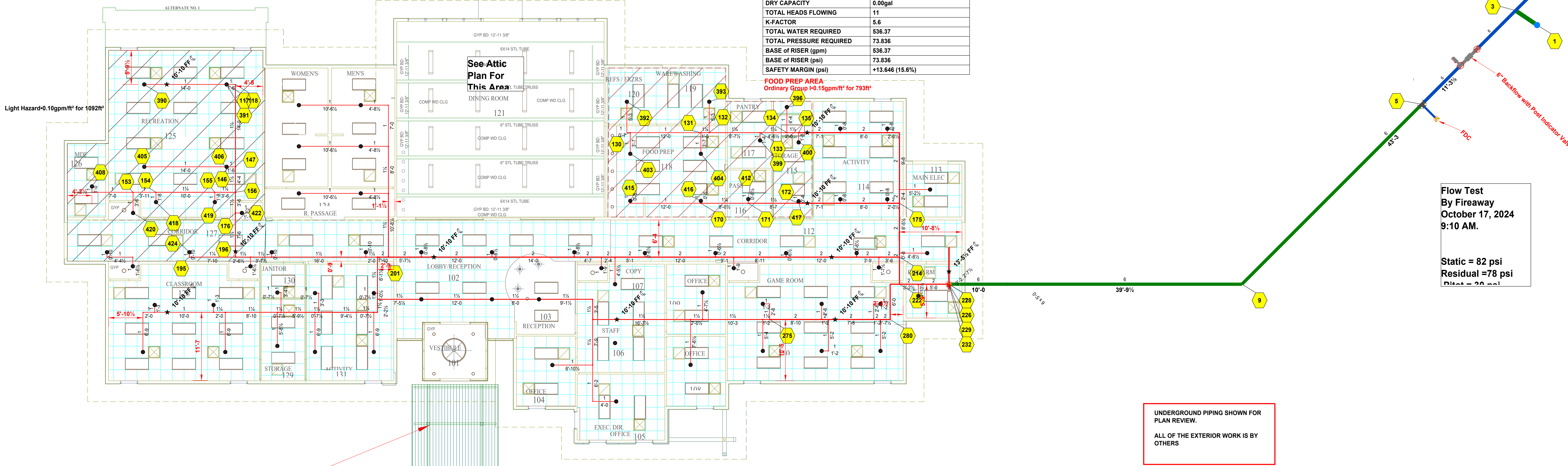
Hydraulic Information	
Remote Area 1	
OCCUPANCY CLASSIFICATION	Light Hazard
DENSITY (gpm/ft <sup>2</sup> )	0.10 for 1500ft <sup>2</sup> (Actual 1603ft <sup>2</sup> )
TOTAL HOSE STREAMS	100.00
DRY CAPACITY	0.00gal
TOTAL HEADS FLOWING	17
K-FACTOR	4.2
TOTAL WATER REQUIRED	321.35
TOTAL PRESSURE REQUIRED	71.704
BASE OF RISER (gpm)	321.35
BASE OF RISER (psi)	71.704
SAFETY MARGIN (psi)	+16.708 (18.9%)



### PLAN SPRINKLER ATTIC

Hydraulic Information	
Remote Area 2	
OCCUPANCY CLASSIFICATION	Light Hazard
DENSITY (gpm/ft <sup>2</sup> )	0.10 for 1500ft <sup>2</sup> (Actual 1092ft <sup>2</sup> )
QUICK RESPONSE REDUCTION	10'-0" Ceiling (40.0%) 900ft <sup>2</sup>
TOTAL HOSE STREAMS	100.00
DRY CAPACITY	0.00gal
TOTAL HEADS FLOWING	10
K-FACTOR	5.6
TOTAL WATER REQUIRED	278.16
TOTAL PRESSURE REQUIRED	72.422
BASE OF RISER (gpm)	278.16
BASE OF RISER (psi)	72.422
SAFETY MARGIN (psi)	+16.127 (18.2%)

Hydraulic Information	
Remote Area 2	
OCCUPANCY CLASSIFICATION	Ordinary Group I
DENSITY (gpm/ft <sup>2</sup> )	0.15 for 1500ft <sup>2</sup> (Actual 793ft <sup>2</sup> )
TOTAL HOSE STREAMS	250.00
DRY CAPACITY	0.00gal
TOTAL HEADS FLOWING	11
K-FACTOR	5.6
TOTAL WATER REQUIRED	536.37
TOTAL PRESSURE REQUIRED	73.836
BASE OF RISER (gpm)	536.37
BASE OF RISER (psi)	73.836
SAFETY MARGIN (psi)	+13.646 (15.6%)

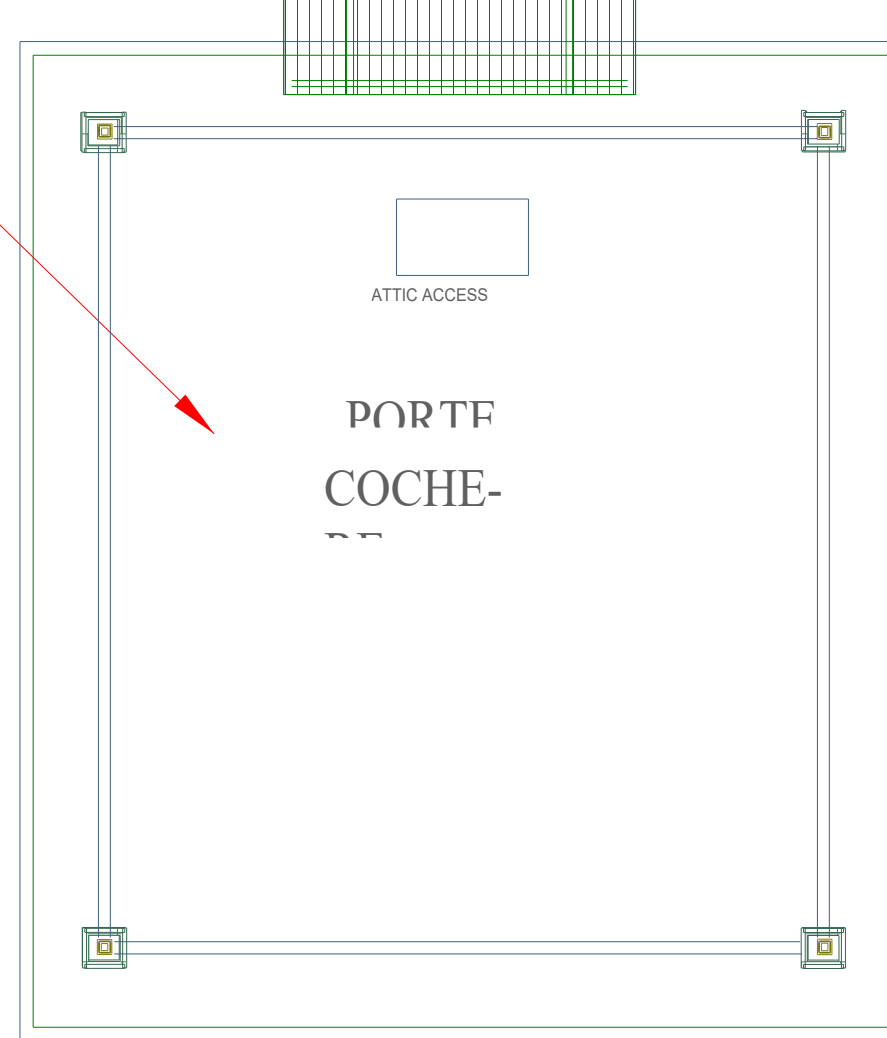


Flow Test  
By Fireaway  
October 17, 2024  
9:10 AM.  
  
Static = 82 psi  
Residual = 78 psi  
Dist = 30 feet

UNDERGROUND PIPING SHOWN FOR PLAN REVIEW.  
ALL OF THE EXTERIOR WORK IS BY OTHERS

#### GENERAL NOTES:

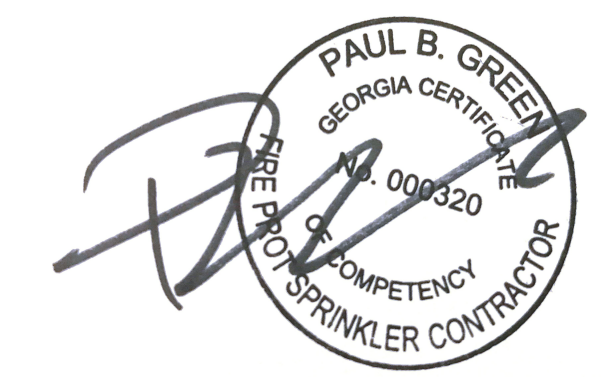
- System is designed in accordance with NFPA 13 2019 ed. Hydraulic information to be provided on sprinkler riser.
- New 4" and 6" piping to be black Schedule 10 with grooved fittings and welded outlets and threaded 1" to 2" threaded piping to be schedule 40 black pipe with threaded fittings.
- All inspector's test connections and low point drains to be provided per NFPA 13.
- Maximum spacing per sprinkler is 225 SF in Light Hazard Areas and 130 SF in Ordinary Hazard Areas.
- The system to be hydrostatically tested to 200 psi for 2 hrs - per NFPA 13.



### PLAN SPRINKLER SYSTEM

8,200 Square Feet

# AS BUILT DRAWING



**FIRE AWAY, LLC.**  
636 Moore St., Oxford, Georgia 30054  
770-918-0527 - Designer Email - paul@firetronicllc.com

**Newton Senior Services**  
Richard Chapel Road  
Covington, GA

FIRE SPRINKLER PLAN, NOTES, & DETAILS

DRAWN BY: **Paul Green**  
NICET IV - Water-Based Systems Layout  
DATE: 9/3/25  
SHEET NO: 1

Paul Brian Green