



10641 Highway 36  
Covington, GA  
30014

[www.sunbeltbuilders.com](http://www.sunbeltbuilders.com)

t 770.786.3031  
f 770.786.3046

## Senior Services Enrichment Center

WCS  
9548 Tara Blvd.  
Jonesboro, GA 30236  
ph: 770-478-7781  
Kenny Miles  
[wcskennym@gmail.com](mailto:wcskennym@gmail.com)

10-2113 Restroom Accessories O&M

**1-1/2" Dia. Horizontal Grab Bar 54" [1372] x 42" [1067]**

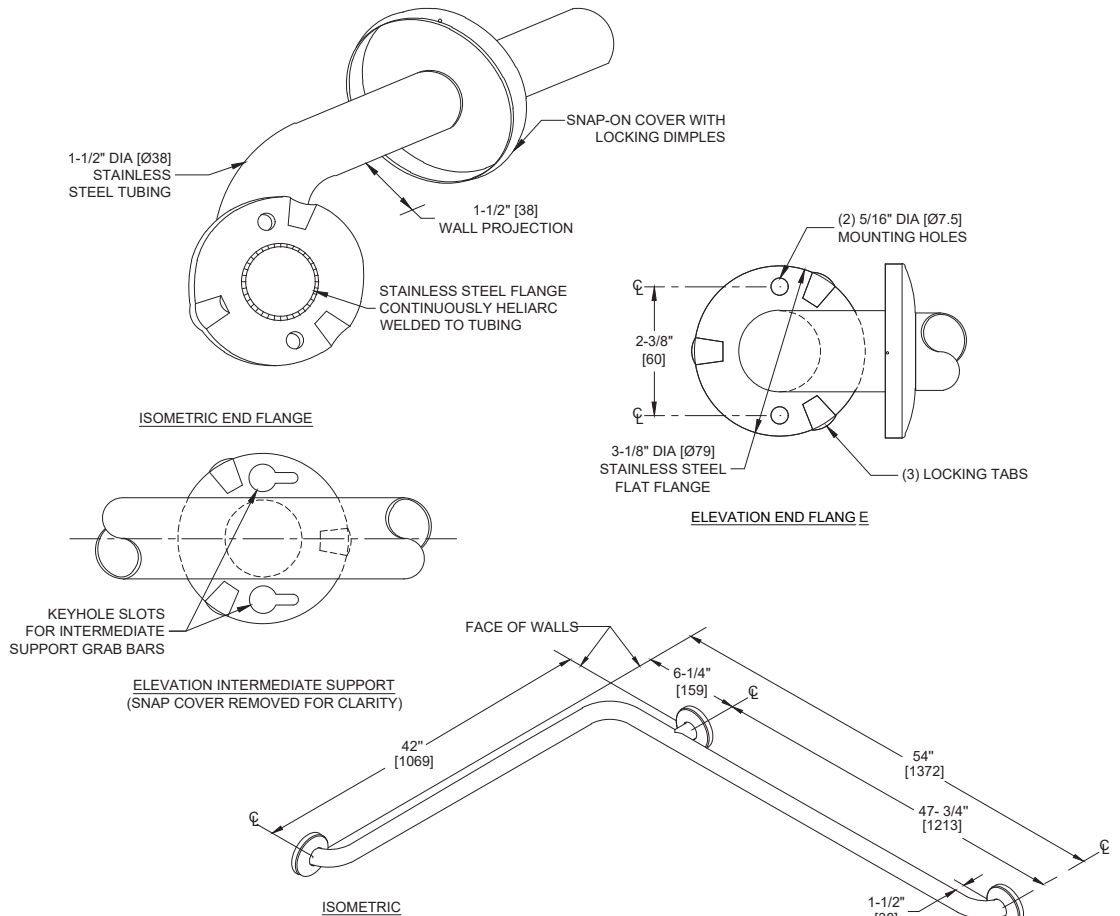
Grab Bars

MasterFormat Section 10 28 13



**SUSTAINABILITY/LEED**

MR 4.1 (1) MR 6 (1) EQ 4.2 (1)  
MR 4.2 (1) EQ 4.1 (1) EQ 4.4 (1)



**NOTE:**  
ALL DIM'S INCH [MM]  
ILLUSTRATION FOR REF ONLY AND NTS

**PRODUCT OVERVIEW**

Features include cover that snaps over mounting flange dimples to conceal screws and concealed mounting flange of 3-1/8" [79] O.D. with 2 screw holes and 3 locking dimples; 1/8" [3] thick, type 304 stainless steel. Cover is type 304 stainless steel with a satin finish and 22 gauge, 3-3/16" [81] diameter. 1-1/2" O.D [Ø38] bar with smooth surface.

**KEY FEATURES & SPECIFICATIONS**

- Horizontal 2 Wall Grab Bar
- Snap Flange - cover snaps over mounting flange to conceal screws
- Type 304 Stainless Steel - Satin Finish
- Surface Mounted
- 18 gauge tubing with 1-1/2" Outside Diameter [Ø38]

### **OPERATION & MAINTENANCE**

Stainless Steel washroom accessory products require regular surface cleaning, much the same as stainless steel sinks, pots and pans and eating utensils. As long as a regular cleaning schedule is followed, the best method is cleaning with a soft clean rag moistened with a mild detergent, followed by a water-moistened clean rag and then a dry rag. For a "new" look, surfaces can be wiped with lemon oil applied by a soft polishing cloth to maintain sheen. Stainless Steel should be protected against muriatic acid and caustic or abrasive materials, and harsh cleaning detergents [with pH outside the range  $7 \pm 1.5$ ]. In the event such agents cause discoloration, polishing with a stainless steel cleaner such as 3M™ Stainless Steel Cleaner & Polish® and a soft cloth on bright or mirror finishes, or for satin finish surfaces the Stainless Steel cleaner and 3M™ Scotch Brite® pad either blue (less aggressive) or green (more aggressive) is recommended.

### **TECHNICAL INFORMATION / PRODUCT PROPERTIES**

<b>Property</b>	<b>Value</b>
Dimensions	54" [1372] x 42" [1067]
Construction	Type 304 Stainless Steel - Satin Finish 18 gauge tubing with 1-1/2" Outside Diameter [Ø38]
Mounting	Surface Mounted
Capacity	ASI grab bars are designed to meet and exceed 2010 ADA Accessibility Standards and ANSI A117.1 that fabricated product shall be of adequate strength to support a load in excess of 250 pounds (113.4 kg). Mounting to the wall is a critical part of the system to meet this requirement. The fastener system must be adequately sized to withstand the shear, tension or pullout, and torsion loads generated by the maximum loading.

### **INSTALLATION**

Use grab bar as template to mark mounting holes locations and pre-drill holes. Install bar using two (2) #10 self-threading flat head or oval head screws (by others) or other fastener system (by others) to suit conditions for each flange. Appropriate anchoring and backing must be provided in accordance with local building codes or as specified on Architects Plans prior to wall finishing. For compliance with 2010 ADA Accessibility Standards install unit so that the top of the grab bar is 33" [840] minimum Above Finished Floor (AFF) to 36" [915] maximum AFF. Anchors are available from ASI and must be specified separately for each grab bar style scheduled (see 3900 series).

Grab Bar Configurations <https://americanspecialties.com/wp-content/uploads/grabbarconfig.pdf>

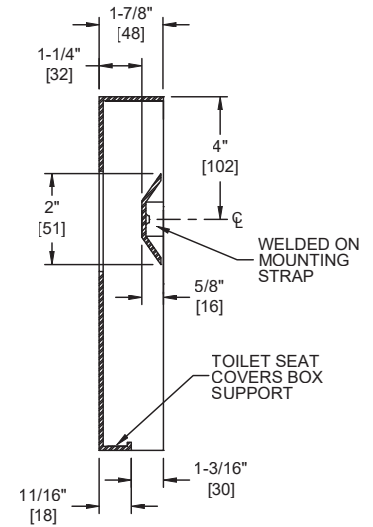
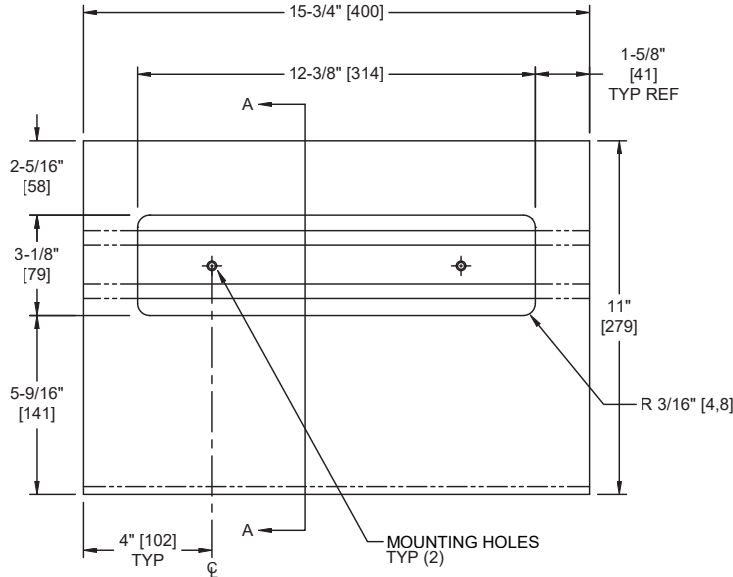
### **WARRANTY**

One (1) Year from date of Invoice

**Toilet Seat Cover Dispenser – Surface Mounted**

Toilet Tissue Dispensers

MasterFormat Section 10 28 13



Scan for Information



**SUSTAINABILITY/LEED**

MR 4.1 (1) MR 6 (1) EQ 4.2 (1)  
MR 4.2 (1) EQ 4.1 (1) EQ 4.4 (1)

**NOTE:**  
ALL DIM'S INCH [MM]  
ILLUSTRATION FOR REF ONLY AND NTS

**PRODUCT OVERVIEW**

Surface mounted unit dispenses 250 single or half-fold seat covers. Fabricated of 22 gauge type 304 stainless steel with satin finish. Heavy-duty 3/16" Dia. [Ø4,8] Stainless steel multi-staked piano hinge door includes tumbler lock.

**KEY FEATURES & SPECIFICATIONS**

- Type 304 Stainless Steel - Satin Finish
- Surface Mounted
- Cabinet 22 gauge

**OPERATION & MAINTENANCE**

Covers are self-feeding until supply is depleted. Unit is manually reloaded with a full box through concealed opening in bottom on schedule determined by maintenance requirements.

**TECHNICAL INFORMATION / PRODUCT PROPERTIES**

Property	Value
Dimensions	15-3/4" [400] W x 11" [279] H x 1-1/4" [32] D
Construction	Type 304 Stainless Steel - Satin Finish
Mounting	Surface Mounted
Capacity	Dispenses 250 standard single or half-fold paper toilet seat covers

**INSTALLATION**

Unit is surface mounted on wall or partition using two (2) #10 x 1-1/2" [Ø5 x 40] self-threading screws (by others). Mounting holes are hidden behind dispenser box for vandal resistant locking but clearly accessible through dispenser slot for installation hanging. For compliance with 2010 ADA Accessibility Standards, unit should be installed so that dispenser slot is 54" [1372] maximum above finished floor (AFF) if clear floor side reach access is provided or 48" [1219] maximum AFF if clear floor forward reach access only is provided or 46" [168] maximum AFF if side reach over an obstruction only is provided (ie: vanity).

**OPTIONS**
**WARRANTY**

One (1) Year from date of Invoice



# AMERICAN SPECIALTIES, INC.

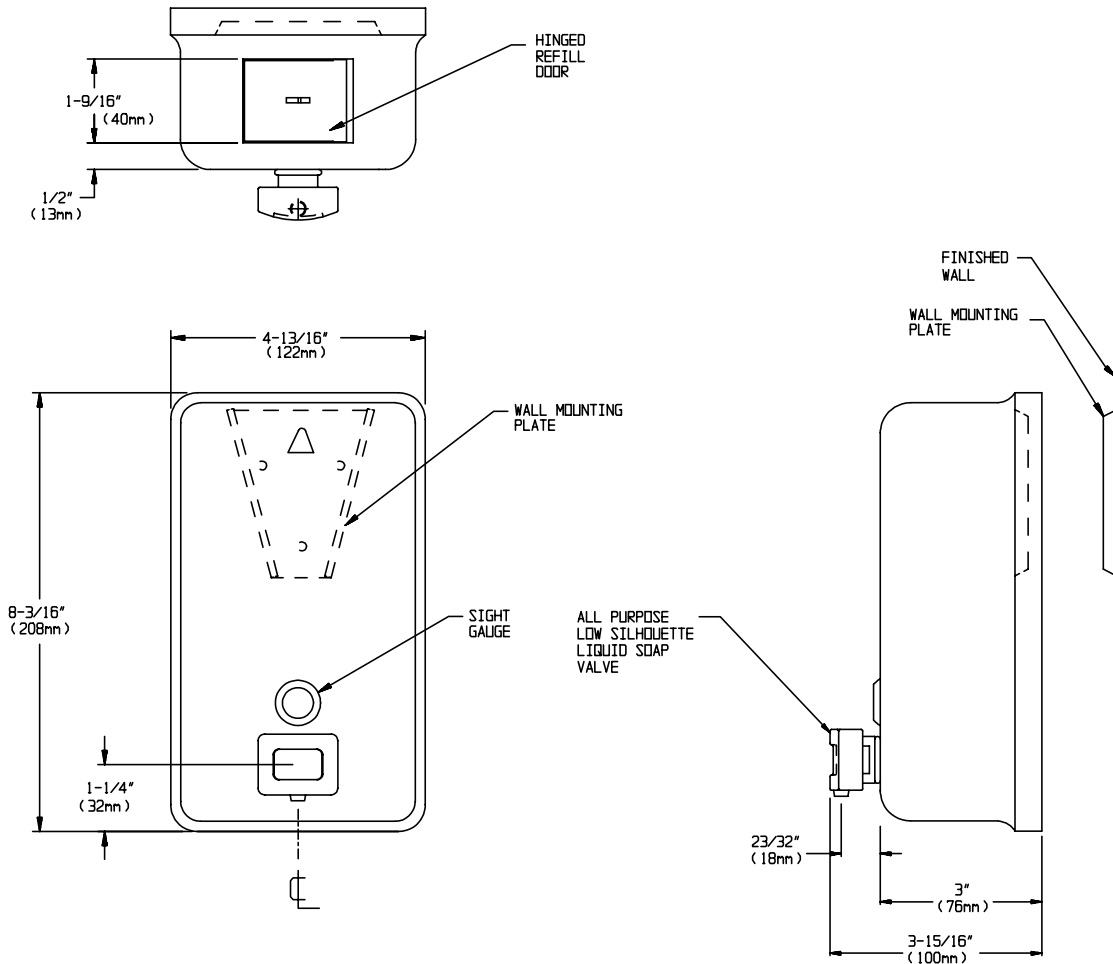
441 Saw Mill River Road, Yonkers, NY 10701 (914) 476-9000  
www.americanspecialties.com

MODEL No: 0347

ISSUED: 7-05

REVISED: 6-06

## SURFACE MOUNTED VERTICAL SOAP DISPENSER



### SPECIFICATION

Surface Mounted Vertical Soap Dispenser shall have a capacity of 40 fluid oz. (1.18 liter) of liquid or lotion soaps, synthetic detergents and antibacterial soaps containing PCMX and/or Triclosan. Dispenser shall be fabricated of 20 gauge stainless steel, alloy 18-8 type 304. All exposed surfaces shall be N° 4 satin finish. Valve shall be constructed of a plastic valve body and push button with stainless steel and plastic internal parts. Valve operation shall comply with ADA Accessibility Guidelines by requiring no more than 5 lbs<sub>f</sub> (22.2 Newtons) pressure to actuate and require no grasping or twisting by operator. A tamper resistant sight gauge shall be provided. Unit shall have a hinged stainless steel refill door on top of unit, which is opened with special key provided.

**Surface Mounted Vertical Soap Dispenser shall be Model N° 0347 of American Specialties, Inc., 441 Saw Mill River Road, Yonkers, New York 10701-4913**

### INSTALLATION

Unit is surface mounted to wall or partition with a wall mounting plate (supplied) and screws (by others). Unit is secured to interlocking wedge bracket and locked in place by a locking screw (supplied) installed through hinged refill door. Recommended installation for general utility is 42" (1066 mm) AFF or 6" (152mm) minimum above washbasin.

### OPERATION

Push button to dispense soap. Unit is refilled through hinged door at top requiring special key (supplied) to open. Soap tank will continue to feed properly until soap level is below valve intake port. Tank supply is replenished manually on cycle determined by maintenance needs.

Accessory Specialties

AMERICAN DISPENSER

Desert Ray Products

WATROUS .INC.



# AMERICAN SPECIALTIES, INC.

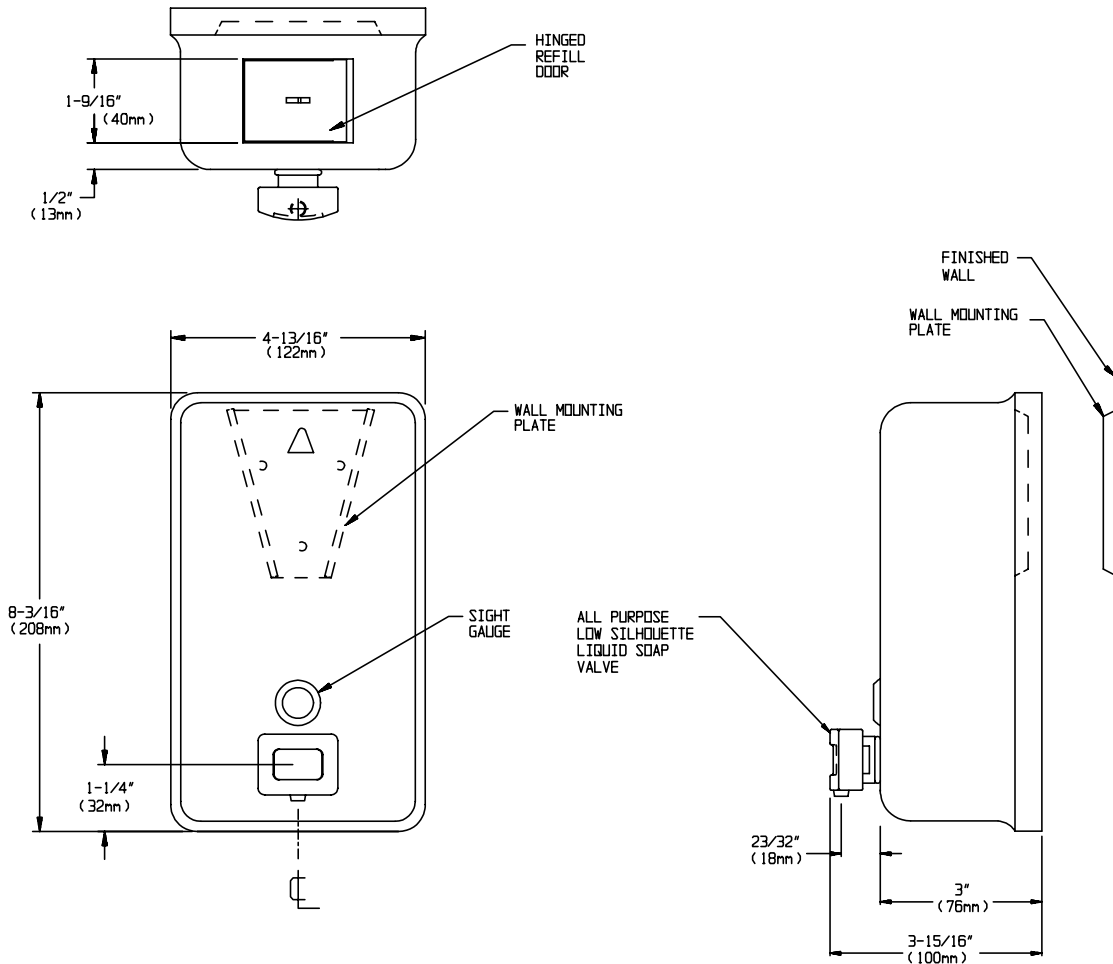
441 Saw Mill River Road, Yonkers, NY 10701 (914) 476-9000  
www.americanspecialties.com

MODEL No: 0347

ISSUED: 7-05

REVISED: 6-06

## SURFACE MOUNTED VERTICAL SOAP DISPENSER



### SPECIFICATION

Surface Mounted Vertical Soap Dispenser shall have a capacity of 40 fluid oz. (1.18 liter) of liquid or lotion soaps, synthetic detergents and antibacterial soaps containing PCMX and/or Triclosan. Dispenser shall be fabricated of 20 gauge stainless steel, alloy 18-8 type 304. All exposed surfaces shall be N° 4 satin finish. Valve shall be constructed of a plastic valve body and push button with stainless steel and plastic internal parts. Valve operation shall comply with ADA Accessibility Guidelines by requiring no more than 5 lbs<sub>f</sub> (22.2 Newtons) pressure to actuate and require no grasping or twisting by operator. A tamper resistant sight gauge shall be provided. Unit shall have a hinged stainless steel refill door on top of unit, which is opened with special key provided.

Surface Mounted Vertical Soap Dispenser shall be Model N° 0347 of American Specialties, Inc., 441 Saw Mill River Road, Yonkers, New York 10701-4913

### INSTALLATION

Unit is surface mounted to wall or partition with a wall mounting plate (supplied) and screws (by others). Unit is secured to interlocking wedge bracket and locked in place by a locking screw (supplied) installed through hinged refill door. Recommended installation for general utility is 42" (1066 mm) AFF or 6" (152mm) minimum above washbasin.

### OPERATION

Push button to dispense soap. Unit is refilled through hinged door at top requiring special key (supplied) to open. Soap tank will continue to feed properly until soap level is below valve intake port. Tank supply is replenished manually on cycle determined by maintenance needs.

Accessory Specialties

AMERICAN DISPENSER

Desert Ray Products

WATROUS .INC.

November 20, 2017

ASI Mirrors are fabricated from plate glass or an alternate reflective surface. Frames are type 304 (18-8) stainless steel. Mistreatment will void compliance with our warranty and silver spoilage will not be covered.

BELOW ARE A FEW TECHNIQUES FOR PROPER CARE AND MAINTENANCE OF MIRRORS:

- Check your shipments on arrival. Look for noticeable mishandling during shipment. If necessary, contact your ASI representative immediately for assistance. Contact the carrier's agent and get an inspection report. If there appears to be moisture present, the mirrors should be unpacked and allowed to dry.
- Store in dry, ventilated spaces. Mirrors exposed to high humidity or chemical fumes can suffer deterioration.
- Store vertically; glass exhibits more strength and fewer strains. Do not pull mirrors from the ends of case. Do not lay mirrors flat.
- Unpack as soon as possible, to allow moisture during shipment to dissipate.
- Use gloves when handling, to prevent damage to the face or backing.
- The safest cleaner is clean, warm water with a soft cloth. An approved glass cleaner such as Windex®, Glass Plus® or similar products may be used. Avoid heavy soaking!
- Do not use any acid, alkali, abrasive or concentrated ammonia based cleaners. These cleaners will attack the mirror surface and edges, and possibly the stainless steel frames.
- Never spray any cleaner directly onto a mirror. Instead, apply the cleaner to a soft cloth and then wipe the mirror. This will prevent "puddling" at the mirror edge where the cleaner could attack the backing and/or attack the mirror silvering.
- Always use clean, soft, grit-free cloths to reduce chances of scratching the surface.
- Do NOT hose down the mirror. Instead, use a cleaner-moistened lint-free glass wiping cloth for dirt removal and another one for wipe off and polish drying.

All ASI products are designed and manufactured to high quality standards to ensure many years of satisfactory service. To assure long life and beauty, the product should be cleaned, protected, and maintained. Usually units that have just been installed will require cleaning after the protective plastic film has been removed. Depending upon how long the units have been in storage prior to installation, a product such as 3M™ Adhesive Remover (6041) may be helpful in removing any stubborn vinyl & adhesive residue.

**Stainless Steel** washroom accessory products require regular surface cleaning, much the same as stainless steel sinks, pots and pans, and eating utensils. As long as a regular cleaning schedule is followed, the best method is cleaning with a soft clean rag moistened with a mild detergent, followed by a water-moistened clean rag and then a dry rag. For a “new” look, surfaces can be wiped with lemon oil applied by a soft polishing cloth to maintain sheen.

**Stainless Steel** should be protected against muriatic acid and caustic or abrasive materials, and harsh cleaning detergents [with pH outside the range  $7 \pm 1.5$ ]. In the event such agents cause discoloration, polishing with a stainless steel cleaner such as 3M™ Stainless Steel Cleaner & Polish® and a soft cloth on bright or mirror finishes, or for satin finish surfaces the Stainless Steel cleaner and 3M™ Scotch Brite® pad either blue (less aggressive) or green (more aggressive) is recommended.

**Plastic, Phenolic, or Laminate** materials can be maintained with general-purpose protectant products such as Armor All®. Do not soak edges of laminated products as this may allow moisture to seep into edge seams, leading to delamination as the core swells over time.

**Soap Dispensers** located in low traffic areas should have the soap dispenser valves wiped down to remove any air-hardened soap residue left on the nozzle spouts. This should be done as part of the day-to-day janitorial maintenance routine covering them. General cleaning on a regular schedule is adequate for soap dispensers in higher traffic areas, with no special attention required. Specific soap dispenser management information is on the product TDS and Soap Dispensing Requirement Chart available online.

**Hand Dryers** are designed to be low-maintenance. To ensure optimum performance and warranty compliance, periodic cleaning of the unit is recommended. There are few-to-no user adjustable or serviceable parts inside the housing. General cleaning of the exterior housing and nozzle surfaces on a regular schedule is adequate, with no special attention required. Any general-purpose cleaner, such as Formula 409® or Windex® is appropriate for porcelain enameled surfaces. For Stainless Steel or ABS plastic covers, follow the same guidelines for Stainless Steel cabinets. Periodically, the sensor lens (if so equipped) should be wiped clean with a soft towel dampened with mild soap and water (NOT SOAKED), and rinse-wiped and dried. In highly dusty environments, the inside of the nozzle and/or exhaust screen should be examined regularly for dust and/or lint build-up, which should be removed. If necessary, maintenance crews can open the housings with special security wrenches (after the power has been shut off) to clean the inside of the screen and/or the blower unit and heating element. Dryer filters (equipped on select models) should be regularly replaced. See dryer specific TDS and Operating Instructions and Parts Manual for additional information.

**NOTES FOR DRYERS**

- Replacement parts are available for select internal components, with service kits including instructions available for major sub-assemblies. These are designed to be installed by qualified technicians ONLY.
- DO NOT SOAK any dryer unit. They are not designed for wet wash-down. Exterior surfaces may only be wiped. Refer to cleaning instructions in unit model manual.
- DO NOT ALLOW any in-housing access or “service” by unqualified personnel.

**NOTES FOR MIRRORS**

- Glass surfaces should be cleaned with any suitable non-abrasive standard glass cleaner, such as Windex® or Glass Plus®. Do NOT use cleaner with ammonia or bleach. Plastic surface mirrors {D& E glazing only} can be washed with mild soap and damp cloth with light pressure to remove splash and spatter, taking care to avoid mirror edges. To remove grease, oil or tar deposits on the mirror surface, either kerosene or hexane may be used. Do not use kitchen cleaning sprays, window cleaners, scouring compounds, or any other unlisted chemical product cleaners.
- For protection each D and E glazing mirror has a durable paint backing and a removable masking on the front. This masking should remain in place to protect the mirrors during all phases of installation. Plastic mirrors should be handled with the masking left on. Care should be taken to avoid sliding the mirrors against each other.
- After installation if there is trouble removing the masking, aliphatic naphtha, kerosene, or distilled alcohol may be used to moisten and soften the adhesive. Do not use any other unlisted chemical product cleaners or sharp objects to remove the masking.
- For long term maintenance of surface gloss the plastic mirror may be occasionally polished using a clean flannel cloth and good plastic cleanser and/or polish, e.g. SC Johnson Pledge®. Follow the polishing instructions on the container label.
- To repair vandalism fine scratches use a plastic scratch remover or compound cleaner and apply by hand polishing. Remove all residue and polish as above in bullet 3. Deep scratches can be smoothed out by lightly sanding with 400 grit wet paper, and then following the fine scratch step and polishing step as above.
- Care should be taken to ensure that cleaners and water are not captured in the frame or behind mirrors to avoid damage.

Additional mirror care information is in the Mirrors Proper Care & Maintenance Guide available online.

**GENERAL NOTES:**

Any effects of vandalism or tampering should be repaired immediately by the user/owner to prevent any product performance deterioration. Products severely damaged must be replaced before they become hazardous. Proper maintenance procedures are the only prescribed method of ensuring a long, trouble-free life for the product. Properly maintained facilities also contribute to the general feeling of well-being that characterizes the ambiance of a hygienic installation. Failure to follow proper maintenance procedures may shorten service life and will reduce product aesthetic quality level over time. Such a condition tends to encourage the disrespect that engenders overt vandalism and may forfeit any user/owner claims to warranty.



## **CLEANING OF EAGLESTONE ADA SIGNS**

Signs can be cleaned using a mixture of a gentle soap and lukewarm water. Apply with mixture using a clean soft cloth or sponge. Rinse with clean lukewarm water. Allow to air dry or hand dry with clean soft cloth. Harsh, abrasive or cleaners containing alcohol can damage the sign and should not be used. Do not apply direct heat to the sign as this may cause color and sign distortion.

P.O. Box 41054 Cleveland, OH 44141  
Fax: (440) 848-8480 Phone: (440) 840-3415  
[info@eaglestoneproducts.com](mailto:info@eaglestoneproducts.com)

**M S D S****Material Safety Data Sheet**

U.S. Department of Labor Occupational Safety and Health Administration (Non-Mandatory Form). Form Approved. OMB No. 1218-0072. May be used to comply with OSHA's Hazard Communication Standard, 29 CFR 1910.1200. Standard must be consulted for specific requirements.

*Note: Blank spaces are not permitted. If any item is not applicable or no information is available, the space must be marked to indicate that.*

**HIPS 90-0304**

Identity (as used on label and list) Natural Impact Polystyrene

**Section I – General Information**

Manufacturer's Name

**Network Polymers, Inc**

Emergency Telephone Number

**330-773-2700**

Address (number, street, city, state and zip code)

**1353 Exeter Road  
Akron, Ohio 44306**

Telephone Number for information

**330-773-2700**

Effective Date: 01/15/2013

Printed Date: 01/15/2013

**Section II - Hazardous Ingredients/Identity Information**

Hazardous Components - -specific chemical identity:	CAS Registry No.	% optional
Polystyrene	9003-53-6	90-100%
Impact Modifier	N/A	0 -10%
Residual Styrene Monomer	100-42-5	< 0.25%

**Section III - Physical/Chemical Characteristics**Specific Gravity (H<sub>2</sub>O=1)**1.05**

Vapor Pressure (mm Hg.)

**N/A**

Vapor Density (AIR=1)

**N/A**Softening Point **175-225°F [79-107°C]**

Evaporation Rate (Butyl Acetate=1)

**N/A**Solubility in Water - **Nil**Appearance and Odor - **Opaque solid, slight aromatic odor****Section IV - Fire and Explosion Hazard Data**

Flammable Properties

Flash point:

N/A

Method Used:

ASTM-D 1929-77

Autoignition temp:

842°F [450°C]

Method Used:

ASTM-D 1929-77

Flammability Limits

LFL: Not applicable

UFL: Not applicable

Hazardous Combustion Products: Under fire conditions, polymers may ignite and decompose. The smoke may contain polymer fragments of varying compounds. Hazardous combustion products may include and are not limited to carbon monoxide, carbon dioxide and undefined organics. Hazardous combustion products may include trace amounts of styrene compounds.

Other Flammability Information: Dense smoke is produced when product burns. To reduce the potential for dust explosion, do not permit dust to accumulate and insure that proper static grounding precautions are implemented during the handling of this material.



**CLEANUP:** Sweep up. Collect with vacuum equipment. Collect in suitable and properly labeled containers. See Disposal Considerations. Molten spills should be permitted to solidify, then removed mechanically by a method producing as little dust as possible.

**Waste Disposal Method:** Material may be incinerated or land-filled in compliance with federal, state and local environmental control regulations.

**Precautions to be Taken in Handling and Storing**

**Handling:** Good housekeeping and controlling of dusts are necessary for safe handling of product. Workers should be protected from the possibility of contact with molten resin. Processing improperly dried resin can result in the production of bisphenol A.

**Storage:** Store in a dry place.

### Section VIII - Control Measures/Personal Protection

**Respiratory Protection:** In dusty atmospheres, use an approved dust respirator.

**Engineering Controls:** Good general ventilation should be sufficient for most conditions. Local exhaust ventilation may be necessary for some operations.

**Skin Protection:** No precautions other than clean body-covering clothing should be needed.

**Eye/Face Protection:** Use safety glasses. If there is a potential for exposure to particles which could cause mechanical injury to the eye, wear chemical goggles.

**Other Protective Clothing or Equipment:** Wear clean body covering and gloves impervious to dust and/or fumes to minimize skin contact.

**Exposure Guideline:** None established.

### Section IX – Toxicological Information

**Toxicity data for:** Styrene

**Acute Toxicity:**

**Eye Effects:** Non-irritating to slightly irritating (rabbit)

**Skin Effects:** Non-irritating to slightly irritating (rabbit)

**Other Acute Effects:** Practically non-toxic orally (rat) or after skin application (rabbit)

**Subchronic Toxicity:** Not Determined.

**Chronic Toxicity:** Not Determined.

**Carcinogenicity:** Not Determined.

**Mutagenicity:** Not Determined.

**Developmental Toxicity:** Not Determined.

### Section X – Ecological Information

**Environmental Fate**

**Movement and Partitioning:** No bioconcentration is expected because of the high molecular weight (MW>1000). In the terrestrial environment, material will sink in the soil. In the aquatic environment, material will sink and remain in the sediment.

**Degradation & Persistence:** This water insoluble polymeric solid is expected to be inert in the environment. Surface photo-degradation is expected with exposure to sunlight. No appreciable biodegradation is expected.

**Ecotoxicity:** Not expected to be acutely toxic, but pellets may mechanically cause adverse effects if ingested by waterfowl or aquatic life.

### Section XI – Disposal Considerations

**Disposal:** DO NOT DUMP INTO ANY SEWERS, ON THE GROUND OR INTO ANY BODY OF WATER. All disposal methods must be in compliance with all Federal, State and local laws and regulations. Regulations may vary in different locations. Waste characterizations and compliance with applicable laws are the responsibility solely of the waste generator.

### Section XII – Transport Information

DOT (DOMESTIC SURFACE)

Non-Regulated

IMO / IMDG CODE (OCEAN)

Non-Regulated

ICAO / IATA (AIR)  
Non-Regulated

**Section XIII – Regulatory Information**

NOTICE: the information herein is presented in good faith and believed to be accurate as of the effective date shown above. However, no warranty, express or implied is given. Regulatory requirements are subject to change and may differ from one location to another; it is the buyer’s responsibility to ensure that its activities comply with federal, state and local laws and regulations. See other sections for health and safety information.

**US REGULATIONS**

**SARA Title III:**

Section 302 (Extremely Hazardous Substances):	<b>NONE</b>
Section 311/312 (Hazard Categories):	<b>NONE</b>
Section 313 (Toxic Chemicals):	Styrene (CAS# 100-42-5) <0.25%

**RCRA Status:** If discarded in its purchased form, this product would not be a hazardous waste either by its listing or by its characteristics. According to RCRA, it is the responsibility of the product user to determine at the time of disposal whether a material containing the product or derived from the product should be classified as a hazardous waste. (40 CFR 261.20-24).

**Toxic Substances Control Act (TSCA):**

The following chemicals are specifically listed by individual states: other product specific health and safety data in other sections of the MSDS may also be applicable for state requirements. For details on specific regulatory requirements please contact the appropriate state agency:

Residual Styrene Monomer	100-42-5	< 0.25%
(1) California Proposition 65	=	These materials are known to cause cancer in the state of California
(2) Massachusetts Hazardous	=	These materials are listed on the Massachusetts Hazardous Substance List
(3) New Jersey	=	These materials are listed on the New Jersey Special Health Hazardous Substance List
(4) Pennsylvania	=	Pennsylvania Non-hazardous when present at 3% or greater

**OSHA Hazard Communication Standard**

**This product is NOT a “Hazardous Chemical” as defined by the OSHA Hazard Communication Standard, 29 CFR 1910.1200.**

THIS PRODUCT DOES CONTAIN KNOWN TOXIC CHEMICALS SUBJECT TO THE REPORTING REQUIREMENTS OF SECTION 313 OF THE EMERGENCY PLANNING AND RIGHT-TO-KNOW ACT OF 1986. THIS PRODUCT DOES NOT MEET A HAZARD CATEGORY DEFINED IN SECTION 311 OR 312 OF THE SUPERFUND AMENDMENT AND REAUTHORIZATION ACT OF 1986 (SARA TITLE III).

## CLEANING INSTRUCTIONS - METAL CABINETS

Our cabinets by are designed to be maintenance free. However, it is recommended that the outer surface of the cabinet, and the hinge area, be kept clear from debris and dirt, to ensure correct operation of the hinged door.

If latches, locks or hinges need to be lubricated, use a "3 in 1" type light oil, removing excess with a cloth.

**Glazing:** Use a soft cloth and mild soap and water.

Finish	Description	Cleaning & Maintenance
Powder-coat Paint	Baked-on Painted Finish	Use a soft cloth and mild soap and water Use a soft cloth and mild soap and water
Mill Aluminum	Mill Aluminum - no clear coat	
313/315/Clear	Dark bronze, black or clear anodized aluminum	
US3	Polished & lacquered brass	Use a soft cloth and mild soap and water. Never use brass polish or an abrasive cleaner unless you intend to remove all lacquer and totally refinish the product.
US4	Satin finish & lacquered brass	
US9	Polished & lacquered bronze	
US10	Satin finished & lacquered bronze	
US10B	Oxidized & oiled bronze	Use a soft cloth and a paste furniture wax. Buff lightly so as not to remove the dark oxide coating where it remains.
US32, #6, #7, #8	Polished stainless steel	Use a soft cloth and mild soap and water solution. After cleaning, thoroughly rinse with clear water to remove all traces of the solution and wipe dry to prevent water marks from forming. Stains which resist that treatment can usually be removed by polishing in the direction of the grain with a soft cloth and a non-abrasive stainless steel polish. Test in an unobtrusive area.
US32D, #4	Satin stainless steel	



**JL INDUSTRIES**

## CLEANING INSTRUCTIONS - METAL CABINETS

©2022 ACTIVAR CONSTRUCTION PRODUCTS GROUP, INC.

HEADQUARTERS: 9702 NEWTON AVE S, BLOOMINGTON, MN 55431 PH: 800-554-6077 EMAIL: SALES@ACTIVARCPG.COM WWW.ACTIVARCPG.COM

MANUFACTURING: BLOOMINGTON, MN & COMMERCE, CA WAREHOUSES: SEE WEBSITE FOR LOCATIONS 1/11/2022