



10641 Highway 36
Covington, GA
30014

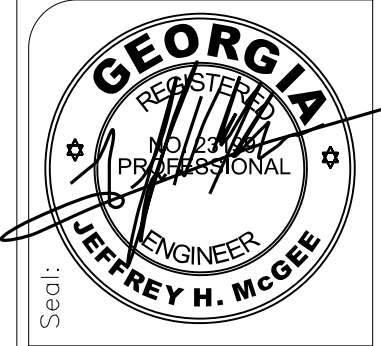
www.sunbeltbuilders.com

t 770.786.3031
f 770.786.3046

Newton County – R.L. Cousins Center

TechOptics, Inc.
463 Bankhead Hwy.
Winder, GA 30680
ph: 770-867-1777
Chad Maynard
chad@techoptics.net

27-2000 Data As-built



ELECTRICAL DESIGN CONSULTANTS, INC.
175 NEW ST., 5TH FL.
MACON, GA 31201
EDC-1424004

SUNBELT
S U N B E L T
10641 HWY. 36, CONNINGTON, GA 30014, TEL: 770.786.3031

Client: **R. L. COUSINS CENTER**
Project: **NEWTON CO. BOC RFP #24-04**
8134 GEIGER STREET, N.W.
CONNINGTON, GEORGIA.

Issue Date: 06-27-24
Revision Description: FOR CONSTRUCTION
Drawn By: TAW
Checked By: JHM
File Name: COMMUNITY BUILDING PLAN - POWER AND TEL/DATA/TV

Project No.: 2023012
Date: 06/27/24
Revision: TAW
Checked By: JHM
File Name: COMMUNITY BUILDING PLAN - POWER AND TEL/DATA/TV

Sheet No.: **E-3.1**

UNIT NAME	VOLTAGE/ PHASE	CIRCUIT BREAKER	PANEL NAME/ CIRCUIT NUMBER	FEEDER	DISCONNECT SWITCH	NOTES
HP-1	208V/1PH	40A/2P	LD-2	3#8, #10G, 1 IN. C.	60A/2P/3R	1
HP-2	208V/1PH	40A/2P	LD-6	3#8, #10G, 1 IN. C.	60A/2P/3R	1
AH-1	208V/3PH	35A/3P	LD-10	4#8, #10G, 1 IN. C.	60A/3P	1,2
AH-2	208V/3PH	35A/3P	LD-16	4#8, #10G, 1 IN. C.	60A/3P	1,2
HPU/ACU-1	208V/1PH	20A/2P	LD-22	3#12, #12G, 3/4 IN. C.	30A/2P/3R	1,3
HPU/ACU-2	208V/1PH	20A/2P	LD-26	3#12, #12G, 3/4 IN. C.	30A/2P/3R	1,3
HPU/ACU-3	208V/1PH	20A/2P	LD-30	3#12, #12G, 3/4 IN. C.	30A/2P/3R	1,3
PU-1	480V/3PH	45A/3P	HD-2	4#8, #10G, 1 IN. C.	60A/3P/3R	1,4
PU-2	480V/3PH	100A/3P	HD-8	4#2, #6G, 1 1/2 IN. C.	100A/3P/3R	1,4
EF-1	120V	20A/1P	LD-34	2#12, #12G, 1/2 IN. C.	MOTOR RATED SWITCH	1,6
EF-2	120V	20A/1P	LD-36	2#12, #12G, 1/2 IN. C.	MOTOR RATED SWITCH	1,6
EF-3	120V	20A/1P	LD-37	2#12, #12G, 1/2 IN. C.	MOTOR RATED SWITCH	1,7
EF-4	120V	20A/1P	LD-39	2#12, #12G, 1/2 IN. C.	MOTOR RATED SWITCH	1,7
EF-5	120V	20A/1P	LD-41	2#12, #12G, 1/2 IN. C.	MOTOR RATED SWITCH	1,5
WH-C07	277V	25A/1P	HD-20	2#10, #10G, 3/4 IN. C.	30A/1P	
RC-1	120V	20A/1P	LD-35	2#12, #12G, 1/2 IN. C.	MOTOR RATED SWITCH	

NOTES:

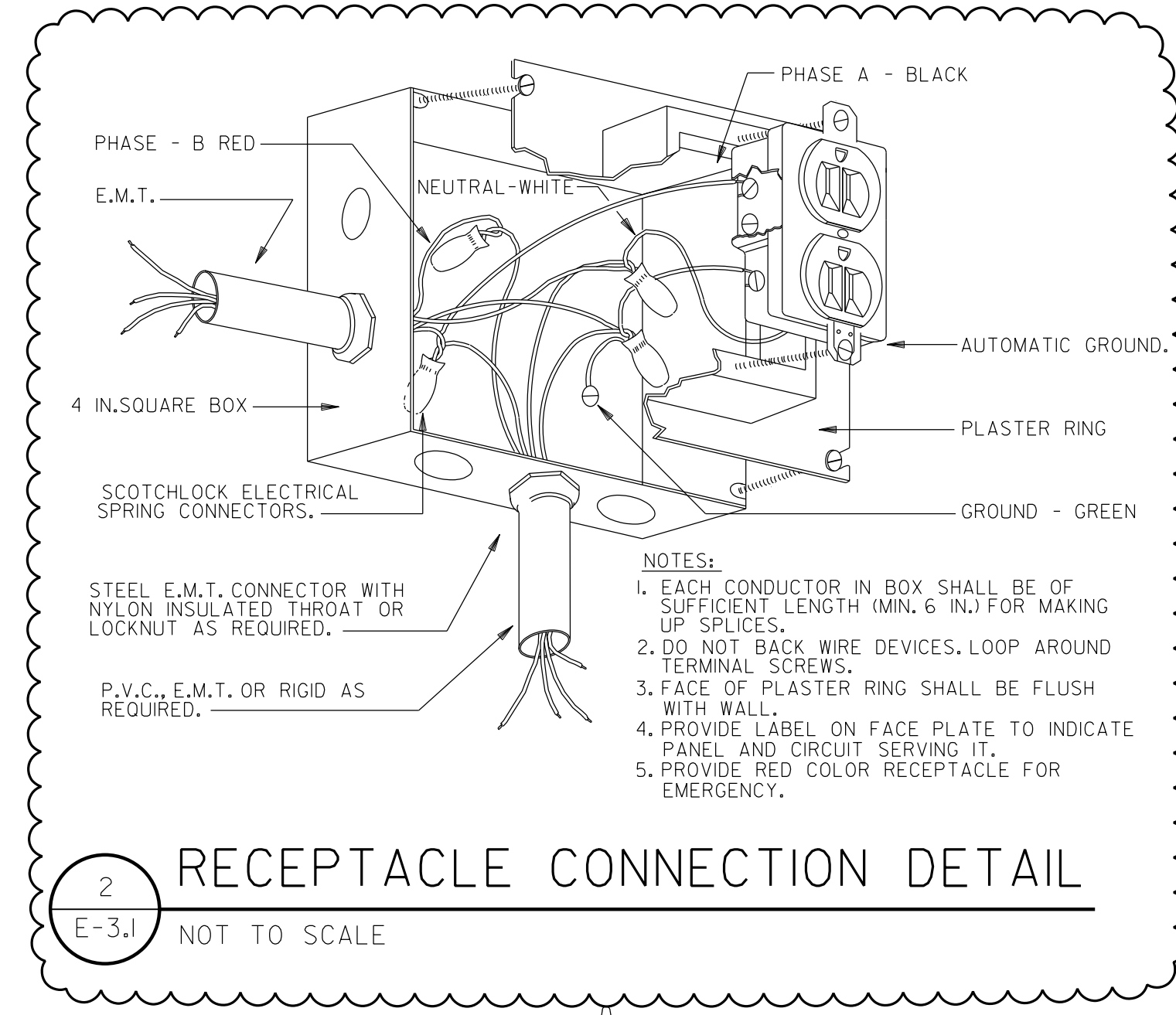
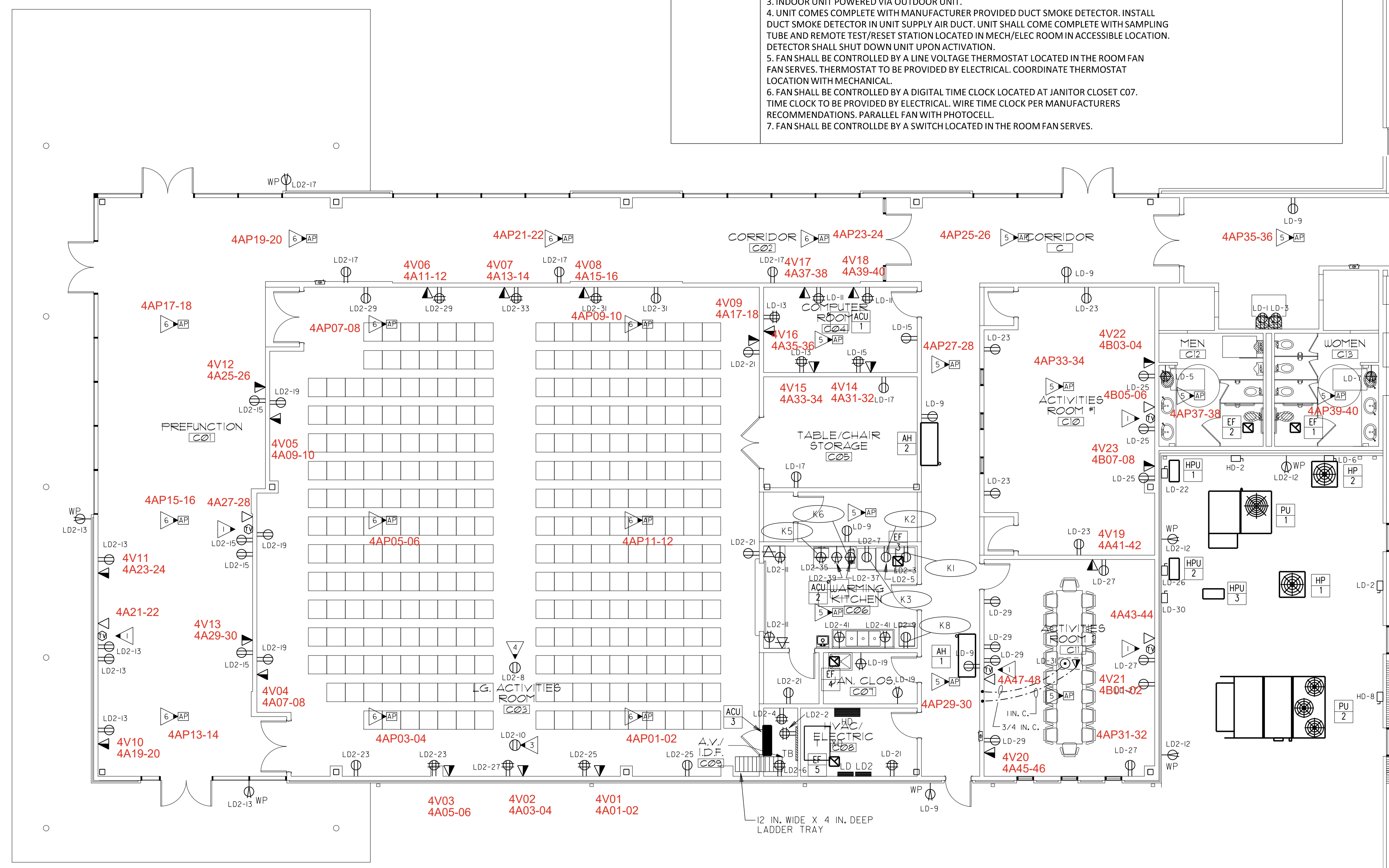
- SEE MECHANICAL FOR EXACT CONTROL REQUIREMENTS.
- PROVIDE DUCT SMOKE DETECTOR IN SUPPLY AIR DUCT. UNIT SHALL COME COMPLETE WITH SAMPLING TUBE AND REMOTE TEST/RESET STATION LOCATED IN MECH/ELEC ROOM IN ACCESSIBLE LOCATION. DETECTOR SHALL SHUT DOWN UNIT UPON ACTIVATION.
- INDOOR UNIT POWERED VIA OUTDOOR UNIT.
- UNIT COMES COMPLETE WITH MANUFACTURER PROVIDED DUCT SMOKE DETECTOR. INSTALL DUCT SMOKE DETECTOR IN UNIT SUPPLY AIR DUCT. UNIT SHALL COME COMPLETE WITH SAMPLING TUBE AND REMOTE TEST/RESET STATION LOCATED IN MECH/ELEC ROOM IN ACCESSIBLE LOCATION. DETECTOR SHALL SHUT DOWN UNIT UPON ACTIVATION.
- FAN SHALL BE CONTROLLED BY A LINE VOLTAGE THERMOSTAT LOCATED IN THE ROOM FAN FAN SERVES. THERMOSTAT TO BE PROVIDED BY ELECTRICAL. COORDINATE THERMOSTAT LOCATION WITH MECHANICAL.
- FAN SHALL BE CONTROLLED BY A DIGITAL TIME CLOCK LOCATED AT JANITOR CLOSET C07. TIME CLOCK TO BE PROVIDED BY ELECTRICAL. WIRE TIME CLOCK PER MANUFACTURERS RECOMMENDATIONS. PARALLEL FAN WITH PHOTOCELL.
- FAN SHALL BE CONTROLLED BY A SWITCH LOCATED IN THE ROOM FAN SERVES.

GENERAL NOTES:

- COORDINATE EXACT LOCATIONS OF ALL MECHANICAL EQUIPMENT. PRIOR TO ELECTRICAL ROUGH-IN.
- ALL FLEXIBLE CONDUIT SHALL BE METALLIC WATERPROOF.
- COORDINATE FINAL RECEPTACLE AND VOICE/DATA OUTLET LOCATIONS WITH ARCHITECTURAL CASEWORK AND OWNER PRIOR TO ROUGH-IN. NO EXCEPTIONS.
- COORDINATE EXACT CONDUIT REQUIREMENTS FOR THERMOSTATS TO ALL AIR HANDLING UNITS. SEE MECHANICAL DRAWINGS FOR EXACT LOCATIONS. PROVIDE OUTLET BOXES AND CONDUIT TO ABOVE CEILINGS FOR ALL THERMOSTATS.
- FIRE SEAL ALL FIREWALL PENETRATIONS.

KEYED NOTES: (THIS SHEET ONLY)

- PROVIDE RECEPTACLE, DATA OUTLET, AND TV OUTLET MOUNTED HIGH ON WALL FOR TV. COORDINATE EXACT LOCATION AND MOUNTING HEIGHT WITH OWNER PRIOR TO ROUGH-IN.
- COORDINATE EXACT LOCATION OF FLOOR BOX WITH OWNER PRIOR TO ROUGH-IN.
- PROVIDE CONNECTION TO MOTORIZED SCREEN. COORDINATE EXACT LOCATION WITH OWNER/ARCHITECT PRIOR TO ROUGH-IN.
- CEILING MOUNTED PROJECTOR. COORDINATE EXACT LOCATION WITH OWNER/ARCHITECT PRIOR TO ROUGH-IN.
- PROVIDE BISCUIT DATA OUTLET FLUSH MOUNTED ABOVE ACCESSIBLE CEILING FOR WIRELESS ACCESS POINT. COORDINATE EXACT LOCATION WITH OWNER/ARCHITECT PRIOR TO ROUGH-IN.
- PROVIDE BISCUIT DATA OUTLET FLUSH MOUNTED IN CEILING FOR WIRELESS ACCESS POINT. COORDINATE EXACT LOCATION WITH OWNER/ARCHITECT PRIOR TO ROUGH-IN.



ITEM NO.	QUANTITY	DEVICE	VOLTAGE/ PHASE	AMPS	CIRCUIT BREAKER	CIRCUIT NUMBER	FEEDER	DISCONNECT	NEMA CONNECTION	NOTES
K1	1	REFRIGERATOR	120V	3.8A	20A/1P	LD2-3	2#12, #12G, 1/2 IN. C.	CORD AND PLUG	5-15P	1,2,3,4
K2	1	FREEZER	120V	6.5A	20A/1P	LD2-5	2#12, #12G, 1/2 IN. C.	CORD AND PLUG	5-15P	1,2,3,4
K3	1	WARMING CABINET	120V	15A	20A/1P	LD2-7	2#12, #12G, 1/2 IN. C.	CORD AND PLUG	5-20P	1,2,3,4
K5	1	MICROWAVE	120V	13.4A	20A/1P	LD2-35	2#12, #12G, 1/2 IN. C.	CORD AND PLUG	5-15P	1,2,3
K6	1	COFFEE BREWER	120V	13.8A	20A/1P	LD2-37	2#12, #12G, 1/2 IN. C.	CORD AND PLUG	5-15P	1,2,3
K8	1	ICE MAKER	120V	9.1A	20A/1P	LD2-9	2#12, #12G, 1/2 IN. C.	CORD AND PLUG	5-15P	1,2,3,4

NOTES:

- VERIFY ELECTRICAL REQUIREMENTS WITH EQUIPMENT VENDOR PRIOR TO ROUGH-IN.
- VERIFY NEMA CONFIGURATION PRIOR TO ROUGH-IN.
- COORDINATE EXACT ROUGH-IN HEIGHT WITH ARCHITECT PRIOR TO ROUGH-IN.
- PROVIDE GFCI BREAKER FOR EQUIPMENT.

COMMUNITY BUILDING PLAN - POWER & TEL/DATA/TV SYSTEMS
E-3.1 SCALE: 1/8"=1'-0"

PROVIDE ALL BRANCH CIRCUIT CONDUIT/CONDUCTORS AS NECESSARY TO CONNECT ALL DEVICES SHOWN ON THE CIRCUIT. PROVIDE DEDICATED NEUTRALS FOR ALL CIRCUITS. (STRIPED NEUTRAL WITH PHASE COLOR STRIPING)