



10641 Highway 36
Covington, GA
30014

www.sunbeltbuilders.com

t 770.786.3031
f 770.786.3046

Newton County – R.L. Cousins Center

Covington Air Systems
P.O. Box 1526
Covington, GA 30015
ph: 770-385-0068
Byron Hopper

bhopper@covingtonairsystems.com

23-0000 HVAC As-built

MECHANICAL SPECIFICATIONS

- 1) Provide all heating, ventilation and air conditioning items indicated on the drawings, described in this specification or required for a complete and proper installation.
2) Comply with all pertinent codes, ordinances and regulations. Refer to website for Dept. of Community Affairs for current Codes Editions.
3) The contractor shall not attempt to precisely scale dimensions from these drawings to obtain construction dimensions and clearances.
4) Furnish without extra charge, any additional material and labor required to comply with the above codes and standards, even though the work may not be described in the contract documents.
5) All equipment and material shall be new and of first quality. Equipment and material shall be the same or equal to the basis of design listed on these drawings and shall be UL listed.
6) Cooperate and coordinate with other trades in order that all systems in the work may be installed in the best arrangement.
7) Examine the areas and conditions under which work of this section will be installed. Correct conditions detrimental to the proper and timely completion of the work.
8) Avoid interference with structure, and with work of other trades.
9) All other materials not specifically described but required for a complete and proper installation shall be as selected by the contractor subject to acceptance by the Engineer.
10) All ductwork shall be fabricated from galvanized steel metal duct and conform to SMACNA HVAC Duct Construction Standards-Metal and Flexible.
11) Flexible duct: Flex master, Alco UPC#36(R-6.0); Alco UPC#31 (R-8); or Thermax, Type 3, insulated, 5'-0" Maximum length unless noted otherwise.
12) Duct Liner: Owens Corning Aeroflex Plus, or equivalent.
13) Condensate drain piping shall be ASTM D2665 PVC with solvent welded fittings.
14) Refrigerant piping shall conform to manufacturer's recommendations and installation instructions.
15) Thermostats: Provide 24 volt, programmable 24-hour, 7-day thermostat to control heating stages in sequence with delay between stages and supply fan to maintain temperature setting.
16) Provide fire and smoke rated flexible connections between fans and ducts.
17) Install all equipment in accordance with manufacturer's instructions and recommendations including clearances recommended for proper operation or service.
18) Indoor duct insulation: Foil-faced fiberglass, Owens Corning type 75 or equal, 2.2" thick(R-6), unless the insulated duct is outside building insulation envelope.
19) Outside duct insulation: Insulate ducts and fittings with two, staggered layers of 1-inch foamed plastic sheet insulation, (Armo-Flex sheets) 6-pound density, having a thermal conductivity of not more than 0.028 at 75°F.
20) All supply, return and outside air ducts shall be insulated.
21) All low-pressure duct branches shall contain vapor balancing dampers.
22) Make all duct elbows right angle type with single -thickness turning vanes or construct with centerline radius 1-1/2 times the duct width.
23) Duct sizes shown on plans are clear, interior dimensions.
24) Do not cut into or reduce the size of any structural member without the permission of the Architect.
25) Provide weather-proof flashing at all duct and pipe penetrations through the building walls and roof.
26) Support all HVAC units, ductwork, piping and other appurtenances from structure, provide vibration isolation at all fans which are not internally isolated.
27) Thoroughly clean all components and remove all dirt, scale, oil, and other foreign substances.
28) Perform all tests necessary to demonstrate the integrity of the complete installation to the approval of the Engineer and all other authorities having jurisdiction.
29) SUBMITTALS AND SUBMITTAL PROCEDURES:
a. Contractor shall review the submittal data and check for the purpose of compliance with safety requirements, verification of dimensions, contract documents and methods and means prior to submitting to design professional.
b. Transmit each submittal electronically in PDF format.

- c. Sequentially number submittal files and transmittal form. Revise submittals with original number and a sequential alphabetic suffix.
d. Identify Project, the Contractor, Subcontractor or supplier; pertinent drawing and detail number, and specification section number, as appropriate on each copy.
e. Apply the Contractor's stamp, signed or initialed certifying that review, approval, verification of Products required, field dimensions, adjacent construction Work, and coordination of information is in accordance with the requirements of the Work and Contract Documents.
f. Submittal data for all items in project shall be submitted at one time.
g. Deliver submittals electronically to the Design Professional.
h. Schedule submittals to expedite the Project, and coordinate submission of related items.
i. For each submittal for review, allow 15 days excluding delivery time to and from the Contractor.
j. Identify variations from Contract Documents and Product or system limitations that may be detrimental to successful performance of the completed Work.
k. Provide space for the Contractor and the Architect/ review stamps.
l. When revised for resubmission, identify all changes made since previous submission.
m. Distribute copies of reviewed submittals as appropriate.
n. Submittals not requested will not be recognized or processed.
o. Provide files containing only related items (such as piping, equipment, air distribution, etc.)
30) Instruct Owner's representative in the operation of the systems, using the operation and maintenance manual as a teaching aid.
31) Provide an operation and maintenance manual.
a. A complete list of all equipment and appurtenances with equipment designations (per Drawings), manufacturers, and catalog numbers.
b. Copies of manufacturers' brochures and instructions for operation and maintenance of all mechanical equipment, including replacement parts lists.
c. Typed system operation and maintenance instructions, including inspection, lubrication, and service instructions and schedules.
d. List of names, addresses and phone numbers of distributors of all equipment and appurtenances.
e. Manufacturers' warranties.
32) Horizontal Air Handler unit: Indoor fan-coil unit shall be direct-expansion horizontal heat pump air handler with electric strip heat suspended from structure with auxiliary drip pan and condensate drain.
33) Vertical Air Handler unit: Indoor fan-coil unit shall be direct-expansion vertical heat pump air handler with electric strip heat mounted on plenum with auxiliary drip pan and condensate drain.
34) Indoor, direct-expansion, wall-mounted fan coil.
35) Small Split Condensing unit: Casing: House components in welded steel frame with galvanized steel panels with weather resistant, baked enamel finish.
36) Air Source Heat Pumps (HP): outdoor-mounted, air-cooled split system outdoor section suitable for rooftop installation, consisting of a hermetic compressor, an air-cooled coil, propeller-type flow thru outdoor fans, accumulator, full refrigerant charge (R-410A), and control box.
37) Provide a duct smoke detector on the supply duct of each air handling unit or rooftop unit with design airflow exceeding 2,000 CFM, and where smaller air handling units have common return ductwork or plenum and total air flow exceeds 2,000 CFM.
38) Fire damper; curtain type with blades outside air stream except when located behind grilles when blades may be in air stream.
39) Grilles, Registers and Diffusers: Grilles, registers, and diffusers as indicated on the drawings have been selected from the catalog of the manufacturer noted as the basis of design.
40) Air Handlers & Heat Pumps, Packaged Units: Carrier, Trane, York, Lennox
Small Split Units: Mitsubishi, Daikin, Hitachi, Toshiba
Grilles, Registers & Diffusers: Titus, Nalor, Price, Tuttle & Bailey, Kruger, Metal Air (Color selection submitted to Architect)
Fans: Twin-City, Cook, Greenheck, Penn Barry, Arco, American Cool Air, Captive Air, Solar & Palou
Louvers/Dampers/Fire Dampers: United Entech, Greenheck, Ruskin, Arne, United, Air Balance
Controls-provided with unit: Provide thermostats by some manufacturer as equipment

- not project through the register face. Mounting frame shall be coordinated with architectural reflected ceiling plans.
40) Basic motor requirements: basic requirements apply to mechanical equipment motors, unless otherwise indicated.
41) Hangers and supports: Building attachments: concrete inserts or structural-steel fasteners appropriate for building materials, and beam clamps.
42) Sealant materials: joint and seam sealants, general: the term "sealant" is not limited to materials of adhesive or mastic nature but includes tapes and combinations of open-weave fabric strips and mastics.
43) Packaged Roof Top Units-Gas Heat: Outdoor packaged units, ground mounted, electrically controlled, 2-stage stage cooling with 2-stage gas heat units, as scheduled, utilizing scroll hermetic compressor(s) for cooling duty and an indirect fired gas furnace section for heating duty.
44) BI-POLAR IONIZATION DESIGN & PERFORMANCE CRITERIA:
The Bi-polar ionization system shall be capable of effectively killing microorganisms downstream of the bi-polar ionization equipment (mold, bacteria, virus, etc.).
Velocity Profile: The air purification device shall not have maximum velocity profile.
Humidity: Plasma Generators shall not require preheat protection when the relative humidity of the entering air exceeds 85%.
Equipment Requirements: Electrode Specifications (Bi-polar Ionization): Each Plasma Generator with Bi-polar ionization output shall include the required number of power generators sized to meet the air handling equipment capacity.
Air Handling & Plenum Mounted Units (non-ductless mini-split units): Where so indicated on the plans and/or schedules Plasma Generator(s) shall be supplied and installed.
The Bi-polar ionization system shall consist of Bi-Polar Plasma Generator and integral power supply.
45) Gravity Ventilators: Heavy gauge arched sheet aluminum with interlocking seams or spun aluminum with base for curb mounting.
46) All HVAC equipment such as AH, OU, EF, AC, HP, and RTU shall have visible nameplates with their associated marks on them.
47) Ceiling Ventilator shall have corrosion resistant galvanized steel housing with four-point mounting capability.
48) Acceptable Manufacturers are:
Air Handlers & Heat Pumps, Packaged Units: Carrier, Trane, York, Lennox
Small Split Units: Mitsubishi, Daikin, Hitachi, Toshiba
Grilles, Registers & Diffusers: Titus, Nalor, Price, Tuttle & Bailey, Kruger, Metal Air (Color selection submitted to Architect)
Fans: Twin-City, Cook, Greenheck, Penn Barry, Arco, American Cool Air, Captive Air, Solar & Palou
Louvers/Dampers/Fire Dampers: United Entech, Greenheck, Ruskin, Arne, United, Air Balance
Controls-provided with unit: Provide thermostats by some manufacturer as equipment

Professional Engineer Seal for Georgia, License No. 10841-HWY, State of Georgia, Mechanical Engineering, License No. 10841-HWY.
Client: SUNBEL BUILDERS
Project: R. L. COUSINS COMMUNITY CENTER, NEWTON CO. BOC RFP #24-04, 8134 GEIGER STREET, N.W., COVINGTON, GEORGIA.
Sheet Title: MECHANICAL SPECIFICATIONS, Sheet No.: M-0.1

ALPHA BLDG SET 08-27-2024

PHASE 1

GRAVITY VENTILATOR SCHEDULE						
MARK	SERVICE	THROAT AREA SF	INTAKE AREA SF	MAX CFM	GREENHECK MODEL	NOTES
GV-1	INTAKE	0.37	1.30	170	GRS1 B	1
1. SPUN ALUMINUM GRAVITY VENTILATOR.						

FIRE DAMPERS ARE NOT REQUIRED AT PENETRATIONS OF FIRE BARRIERS WHERE SUCH WALLS THAT ARE PENETRATED BY DUCTED HVAC SYSTEMS, HAS A REQUIRED FIRE-RESISTANCE RATING OF 1 HOUR OR LESS, ARE IN AREAS OF OTHER THAN GROUP H AND ARE IN BUILDINGS EQUIPPED THROUGHOUT WITH AN AUTOMATIC SPRINKLER SYSTEM IN ACCORDANCE WITH SECTION 903.3.1.1 OR 903.3.1.2 OF THE INTERNATIONAL BUILDING CODE. FOR THE PURPOSES OF THIS EXCEPTION, A DUCTED HVAC SYSTEM SHALL BE DUCT SYSTEM FOR THE STRUCTURE'S HVAC SYSTEM. SUCH A DUCT SYSTEM SHALL BE CONSTRUCTED OF SHEET STEEL, NOT LESS THAN 26 GAGE (0.0217 INCH (0.55 MM) THICKNESS AND SHALL BE CONTINUOUS FROM THE AIR-HANDLING APPLIANCE OR EQUIPMENT TO THE AIR OUTLET AND INLET TERMINALS.

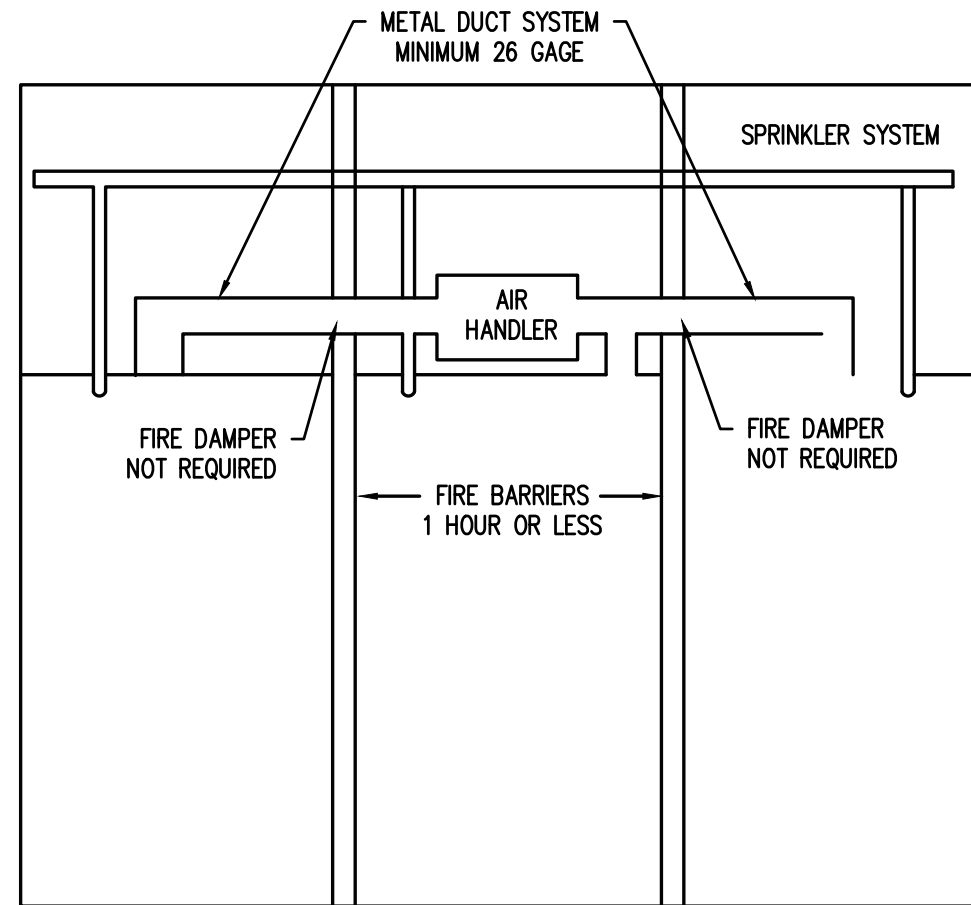


FIGURE INTERNATIONAL MECHANICAL CODE

1. FIRE DAMPER RECEPTION DETAIL DUCTED GAGE METAL SYSTEM SCALE: N.T.S.

SELF-CLEANING IONIZATION SYSTEM SCHEDULE		
AIRFLOW CAPACITY MIN-MAX CFM	BASIS OF DESIGN GLOBAL PLASMA SOLUTIONS	NOTES
0-2400	GPS-FC24-AC	1:2:3:4:5
0-1200	GPS-FC	1:6:7:8
0-8000	GPS-IMOD	1:2:3:4:9

- INTERLOCK IONIZATION SYSTEM TO RUN WITH EVAPORATOR FAN.
- UNIT SHALL BE EQUIPPED WITH UNIVERSAL VOLTAGE INPUT, IN-LINE ON-OFF SWITCH, PROGRAMMABLE AUTO-CLEANING CYCLE.
- UNIT SHALL BE EQUIPPED WITH PLASMA ON INDICATION LIGHT, ALARM CONTACTS, MAGNETS, AND CARBON FIBER BRUSH EMITTERS.
- SYSTEM SHALL BE INSTALLED PER MANUFACTURER'S INSTRUCTIONS.
- ONE IONIZATION SYSTEM PER DUCTED FAN COIL UNIT.
- ONE SELF-CLEANING IONIZATION SYSTEM SHALL BE INSTALLED PER DUCTLESS MINI SPLIT UNIT.
- SYSTEM SHALL BE USE FOR DUCTLESS MINI SPLIT.
- SYSTEM SHALL BE EQUIPPED WITH CARBON FIBER BRUSHES AND LED OPERATION STATUS.
- ONE IONIZATION SYSTEM PER PACKAGED UNIT(PU-1) OVER 2400 CFM.

AIR DEVICE SCHEDULE									
MARK	SERVICE	NECK SIZE	FACE SIZE	MATERIAL	TYPE	PATTERN	MOUNTING TYPE	LAYOUT BASIS	NOTES
S1	SUPPLY	SEE PLANS	24" X 24"	STEEL	SQUARE CONC.	4-WAY	LAY-IN	TITUS TMS	1:2:4
S2	SUPPLY	SEE PLANS	NECK SIZE + 1-3/4"	ALUMINUM	FULL LOUVERED FACE	2-WAY	SURFACE	TITUS 300R	4:5:6
S3	SUPPLY	SEE PLANS	12" X 12"	STEEL	SQUARE CONC.	4-WAY	LAY-IN	TITUS TMS	1:2:4:7
R1	RETURN	SEE PLANS	NECK SIZE + 1-3/4"	ALUMINUM	FULL LOUVERED FACE	---	SURFACE	TITUS 350R	3:4:10
R2	RETURN	SEE PLANS	NECK SIZE + 1-3/4"	ALUMINUM	FULL LOUVERED FACE	---	SURFACE	TITUS 350R	1
R3	RETURN	SEE PLANS	24"X24"	ALUMINUM	EGGCRATE	---	LAY-IN	TITUS 50F	1:8
T1	TRANSFER	SEE PLANS	12"X12"	STEEL	ADJUSTABLE 2-BLADE LOUVER	---	SURFACE	AIR LOUVER 1900A	9
T2	TRANSFER	SEE PLANS	SEE PLANS	STEEL	FIXED BLADES	---	SURFACE	TITUS T-700	1

- PROVIDE STANDARD WHITE FINISH.
- INSULATE BACK OF DEVICE.
- GRILLE SHALL BE SAME COLOR AS WALL IT IS MOUNTED ON.
- BALANCE AIRFLOW TO QUANTITY SHOWN.
- PROVIDE ALUMINIZED FACE OPERATED DAMPER THAT IS ACCESSIBLE FROM THE FACE OF REGISTER/DIFFUSER. SET DEFLECTORS FOR 22.5-DEGREES DEFLECTION.
- GRILLE SHALL BE SAME COLOR AS WALL IT IS MOUNTED ON.
- PROVIDE MANUFACTURER'S FACE OPERATED DAMPER THAT IS ACCESSIBLE BY REMOVING THE FACE OF DIFFUSER.
- PROVIDE FULL SIZE SHEET METAL PLENUM ON TOP OF DIFFUSER FOR DUCT CONNECTION.
- PROVIDE A FIRE RATED DOOR LOUVER WITH SPRING LOADED FLEXIBLE LINK. CONTRACTOR MAY USE TITUS T-700 DOOR LOUVER INCASE EXISTING DOOR IS NOT FIRE RATED.
- PROVIDE MANUFACTURER'S FACE OPERATED DAMPER WHERE NOTED ON DRAWINGS.

MECHANICAL SYMBOLS & ABBREVIATIONS LEGEND	
	NEW PIPE, DUCTWORK OR EQUIPMENT
	DUCT SIZE: FIRST DIMENSION IS SIDE DRAWN
	FLEXIBLE ROUND DUCTWORK
	FIRE DAMPER, SMOKE DAMPER, SMOKE DETECTOR
	CEILING SUPPLY DIFFUSER
	CEILING RETURN OR EXHAUST AIR
	S.A. DUCT OUT OF TU BOX WITH DUCT LINER FOR THR FIRST FIVE FEET OF DUCT OUT OF TU BOX
	SIDEWALL REGISTER OR GRILLE
	CHANGE IN PIPE OR DUCT SIZE OR SHAPE
	REFRIGERANT PIPING
	CONDENSATE OR OTHER DRAIN PIPING
	ELBOW TURNED DOWN OR TURNED UP IN PIPING
	THERMOSTAT, ARROW SHOWS CONTROL WIRING PATH
	DIAMETER
	UNDER-CUT DOOR 3/4", UNLESS OTHER SIZE NOTED
	INDICATES EQUIPMENT ON PLANS; TOP ITEM SHOWS TYPE OF EQUIPMENT AND BOTTOM ITEM SHOWS SPECIFIC MARK NUMBER
	ITEM IN HEXAGON SHOWS AIR DEVICE MARK NUMBER, ITEM ABOVE LINE SHOWS NECK SIZE, ITEM BELOW LINE SHOWS AIR FLOW THROUGH DEVICE, AND NUMBER IN FRONT SHOWS QUANTITY IF MORE THAN ONE
	ABOVE FINISHED FLOOR
	AIR HANDLING UNIT
	BYPASS DAMPER
	BRITISH THERMAL UNITS, THOUSAND BRITISH THERMAL UNITS
	CAPACITY
	CUBIC FEET PER MINUTE
	CEILING
	CONDENSING UNIT
	DRY BULB TEMPERATURE, WET BULB TEMPERATURE
	EXHAUST AIR, EXHAUST GRILLE
	EXHAUST FAN
	EXTERNAL STATIC PRESSURE (USUALLY EXPRESSED IN INCHES OF WATER IN GAGE)
	HEAT PUMP UNIT
	MANUAL VOLUME DAMPER
	OUTSIDE AIR
	RETURN AIR, RETURN GRILLE
	PACKAGED ROOFTOP UNIT
	PACKAGED GROUND MOUNTED UNIT
	VOLTS ALTERNATING CURRENT, NUMBER OF PHASES
	WATTS, KILOWATTS
	ACCESS DOOR
	RADIUS ELBOW (R=1.5)
	VANED ELBOW
	MANUAL VOLUME DAMPER (MVD), MOTOR OPERATED DAMPER (MOD)
	DEMOLITION
	CONNECT NEW TO EXISTING
	EXISTING TO REMAIN

PACKAGED ROOFTOP UNIT SCHEDULE																				
MARK	AIRFLOW	SUPPLY AIR CFM	MIN OUTSIDE AIR CFM	EXT. SP. IN. W.G.	NOMINAL TONS	EVAP. COIL		EVAP. COIL		SYSTEM COOLING		GAS HEAT		HEATING COIL @ OUTSIDE ZSF	POWER VAC/PH	BASIS OF DESIGN: CARRIER	WEIGHT LBS	NOTES		
						ENTERING AIR DESIGN CONDITIONS DB F WB F	LEAVING AIR DESIGN CONDITIONS DB F WB F	MAX. REQUIREMENTS (MBH)	DESIGN CONDITIONS DB F WB F	TOTAL	SENSIBLE	STAGE 1 IN/OUT @ STG 1 @ STG 1	STAGE 2 IN/OUT @ STG 2 @ STG 2							
PU-1	HORIZONTAL	7500	1500	1.0	25.0	78.6	65.6	55.0	54.0	280.0	190.0	95	178/142	220/176	61.0	83.0	208/3	48FCO28MAM5-00A0	2500	1:2:3:4:5:6:7:8:9:10

- PROVIDE FILTERS, CONDENSATE TRAP, PIPING, FLEXIBLE CONNECTIONS, PROGRAMMABLE T-STAT, AND CONDENSATE P-TAP TO DISCHARGE INTO DRY WELL. HORIZONTAL SUPPLY AND HORIZONTAL RETURN UNIT. UNIT SHALL BE MOUNTED ON CONCRETE PAD.
- VERIFY ELECTRIC POWER REQUIREMENTS WITH ELECTRICAL PLANS, WHICH TAKE PRECEDENCE OVER THIS INFORMATION.
- PACKAGED UNIT SHALL HAVE HIGH STATIC MOTOR. PROVIDE MANUFACTURER'S APPROVED SOUND ATTENUATION BLANKETS FOR COMPRESSORS PROVIDE CONDENSER COIL GUARD.
- PROVIDE MANUFACTURER'S SUPPLY AIR SMOKE DETECTOR. ELECTRICAL SHALL INTERLOCK IT WITH BUILDING FIRE ALARM SYSTEM. PROVIDE MANUFACTURER'S INTEGRAL CONDENSATE OVERFLOW SWITCH.
- PROVIDE BUILT-IN HUMID-MIZER ADAPTIVE DEHUMIDIFICATION SYSTEM.
- PROVIDE MANUFACTURER'S 2-STAGE GAS HEAT. PROVIDE FLUE DISCHARGE DEFLECTOR THAT DEFLECTS FLUE UPWARD. PROVIDE FLUE DISCHARGE HEAT SHIELD.
- PROVIDE MOTORIZED MINIMUM OUTSIDE AIR HOOD. INTERLOCK MINIMUM OUTSIDE AIR DAMPER TO OPEN WHEN EVAPORATOR FAN IS ON.
- 2-STAGE COOLING WITH HUMID-MIZER. PROVIDE 2-SPEED INDOOR FAN CONTROLLED.
- UNDER HEATING SUPPLY CFM SHALL BE SET TO PROVIDE 100% OF AIR AT BOTH STAGES. UNDER COOLING MODE STAGE FAN TO MATCH COOLING STAGE.
- PROVIDE GLOBAL PLASMA IONIZATION SYSTEM. REFER TO SCHEDULE FOR FURTHER INFORMATION.

HEAT PUMP AIR HANDLING UNIT SCHEDULE															
MARK	SUPPLY AIR CFM	OUTSIDE AIR CFM	EXT. SP. IN. W.G.	EVAP. FAN HP	EVAP. COIL		EVAP. COIL		SYSTEM COOLING		SUPPL. HEAT KW	WEIGHT (LBS)	POWER VAC/PH	BASIS OF DESIGN: CARRIER	NOTES
					ENTERING AIR DESIGN CONDITIONS DB F WB F	LEAVING AIR DESIGN CONDITIONS DB F WB F	MAX. REQUIREMENTS (MBH)	DESIGN CONDITIONS DB F WB F	TOTAL	SENSIBLE					
AH-1	1,050	120	0.60	1/2	77.1	64.3	55.0	54.0	32.8	25.5	6.8	250	208/3	FV4CNF005L00	1:2:3:4:5:6:7:8:10:11:12
AH-2	1,050	120	0.60	1/2	77.1	64.3	55.0	54.0	32.8	25.5	6.8	250	208/3	FV4CNF005L00	1:2:3:4:5:6:7:8:9:12
AH-3	700	80	0.60	1/2	77.1	64.3	55.0	54.0	21.8	17.0	6.8	250	208/3	FV4CNF003L00	1:2:3:4:5:6:7:8:9:12
AH-4	1,050	120	0.60	1/2	77.1	64.3	55.0	54.0	32.8	25.5	6.8	250	208/3	FV4CNF005L00	1:2:3:4:5:6:7:8:9:12
AH-5	1,750	210	0.60	3/4	77.2	64.4	55.0	54.0	54.0	42.7	11.3	250	208/3	FV4CNB006L00	1:2:3:4:5:6:7:8:10:11:12
AH-6	1,400	170	0.60	3/4	77.2	64.4	55.0	54.0	44.2	34.2	11.3	250	208/3	FV4CNB006L00	1:2:3:4:5:6:7:8:9:12
AH-7	1,050	120	0.60	1/2	77.1	64.3	55.0	54.0	32.8	25.5	6.8	250	208/3	FV4CNF005L00	1:2:3:4:5:6:7:8:9:12
AH-8	700	80	0.60	1/2	77.1	64.3	55.0	54.0	21.8	17.0	6.8	250	208/3	FV4CNF003L00	1:2:3:4:5:6:7:8:9:12
AH-9	1,750	210	0.60	3/4	77.2	64.4	55.0	54.0	54.0	42.7	11.3	250	208/3	FV4CNB006L00	1:2:3:4:5:6:7:8:9:12

- UNIT AT 208/10 AUXILIARY HEATER AT 208/96 UNIT SHALL HAVE SINGLE POINT CONNECTION, AIR-HANDLING UNIT WITH ECM MOTOR.
- VERIFY ELECTRIC POWER REQUIREMENTS WITH ELECTRICAL PLANS, WHICH TAKE PRECEDENCE OVER THIS INFORMATION.
- PROVIDE AIR FILTERS, DUCT CONNECTIONS AND VIBRATION ISOLATION. PROVIDE PROGRAMMABLE THERMOSTAT AND SUPP. ELEC. HEAT MODULE CONNECTED TO UNIT FOR SINGLE POINT OF CONNECTION.
- PROVIDE CONDENSATE TRAPS AS RECOMMENDED BY MANUFACTURER AND ROUTE CONDENSATE PIPING TO OUTSIDE.
- PROVIDE AUXILIARY DRAIN PIPING UNDER THE AIR HANDLERS WITH FLOAT ACTIVATED SWITCH TO SHUT THE UNIT DOWN INCASE OF CONDENSATE OVERFLOW. REFER TO DETAIL PROVIDED.
- PROVIDE DUCT SMOKE DETECTOR IN SUPPLY AIR DUCT OF AIR-HANDLING UNIT. PROVIDE A TEST STATION ACCESSIBLE FROM THE FLOOR FOR EACH DETECTOR.
- FLOAT ACTIVATED CONDENSATE SWITCH SHALL BE PROVIDED AND INSTALLED BY HVAC CONTRACTOR. DUCT SMOKE DETECTORS SHALL BE PROVIDED BY ELECTRICAL CONTRACTOR AND INSTALLED BY HVAC CONTRACTOR.
- PROVIDE COIL OUTLET SWITCH TO SHUT UNIT DOWN IN CASE OF CONDENSATE OVERFLOW. WIRE COIL OUTLET SWITCH IN SERIES WITH AUXILIARY CONDENSATE SWITCH LOCATED IN DRAIN PAN.
- PROVIDE 24/7 365 DAY PROGRAMMABLE THERMOSTAT. PROVIDE GLOBAL PLASMA IONIZATION SYSTEM FOR FAN COIL UNIT.
- PROVIDE ECM3E3 THERMOSTAT WITH TWO SMART SENSORS. LOCATES SENSORS AND THERMOSTAT AS PER NEW WORK PLAN.
- THERMOSTAT AND SENSORS SHALL WORK TOGETHER TO GET AN AVERAGE TEMPERATURE OF OCCUPIED SPACE.
- PROVIDE GLOBAL PLASMA IONIZATION SYSTEM FOR FAN COIL UNIT.

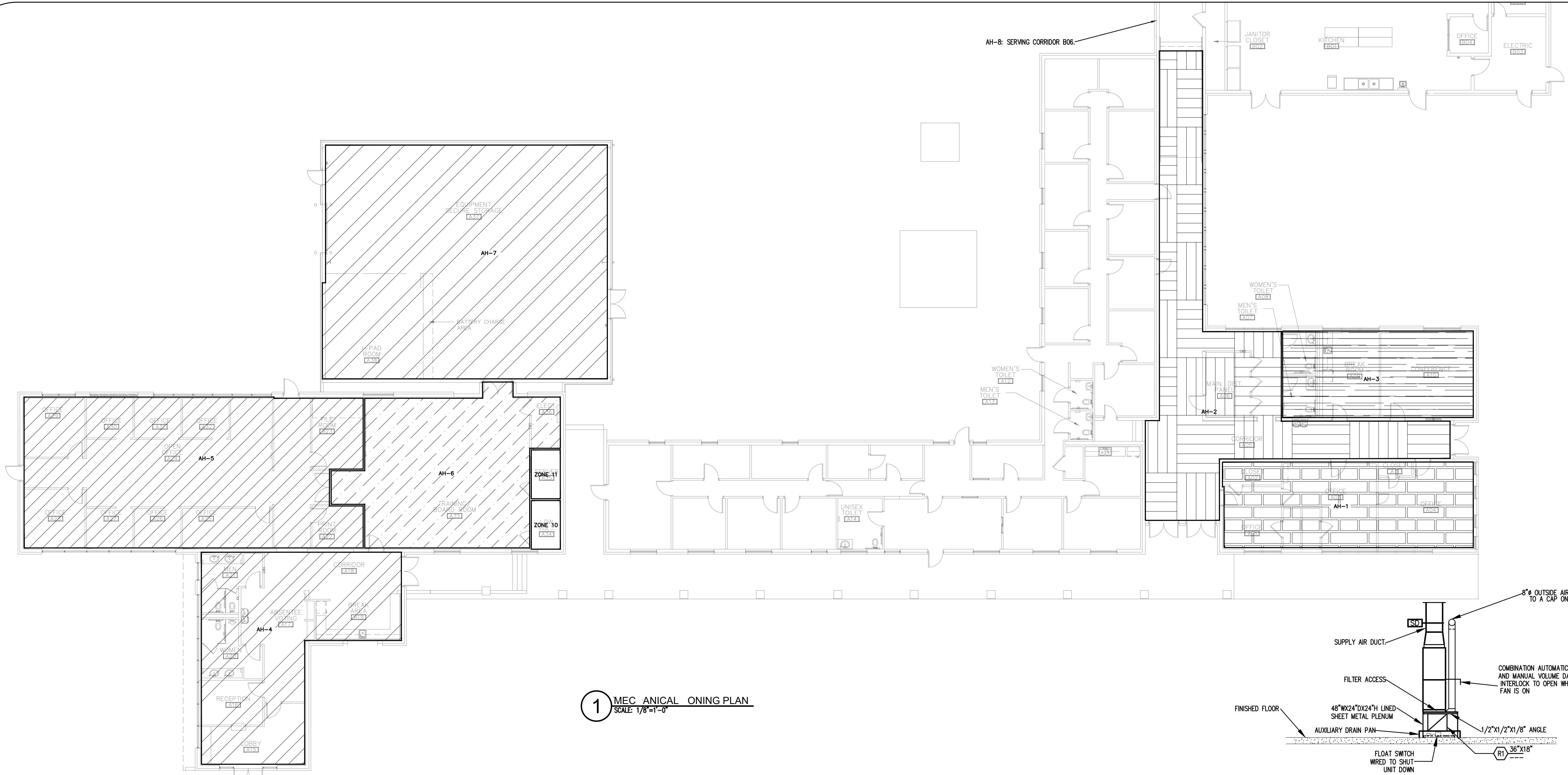
AIR COOLED HEATPUMP UNIT SCHEDULE													
MARK	AHU SERVED	HEAT PUMP HEATING CAP (MBH)	SEER2	HSPF2	NOM. CAP.	REFRIG.	OA TEMP SUMMER (DB)	OA TEMP WINTER (DB)	WEIGHT (LBS)	POWER VAC/PH	BASIS OF DESIGN: CARRIER	NOTES	
													SEER
HP-1	AH-1	23.8	17.0	8.1	3.0	R410A	96	23	350	208/1	25TPA736A003	1:2:3:4:5:6	
HP-2	AH-2	23.8	17.0	8.1	3.0	R410A	96	23	350	208/1	25TPA736A003	1:2:3:4:5:6	
HP-3	AH-3	15.8	16.0	8.1	2.0	R410A	96	23	350	208/1	25TPA724A003	1:2:3:4:5:6	
HP-4	AH-4	23.8	17.0	8.1	3.0	R410A	96	23	350	208/1	25TPA736A003	1:2:3:4:5:6	
HP-5	AH-5	54.0	17.0	8.1	5.0	R410A	96	23	350	208/1	25TPA760A003	1:2:3:4:5:6	
HP-6	AH-6	44.0	17.0	8.1	4.0	R410A	96	23	350	208/1	25TPA748A003	1:2:3:4:5:6	
HP-7	AH-7	23.8	17.0	8.1	3.0	R410A	96	23	350	208/1	25TPA736A003	1:2:3:4:5:6	
HP-8	AH-8	15.8	16.0	8.1	2.0	R410A	96	23	350	208/1	25TPA724A003	1:2:3:4:5:6	
HP-9	AH-9	54.0	17.0	8.1	5.0	R410A	96	23	350	208/1	25TPA760A003	1:2:3:4:5:6	

- PROVIDE WITH DEFROST CONTROLS, LOW AMBIENT HEAD PRESSURE CONTROLS, AND ANTI-SHORT CYCLE TIMER. PROVIDE COIL GUARD.
- VERIFY ELECTRIC POWER REQUIREMENTS WITH ELECTRICAL PLANS, WHICH TAKE PRECEDENCE OVER THIS INFORMATION.
- PROVIDE LIQUID LINE SOLENOID, CRANKCASE HEATER, TXV, START CAPACITOR AND RELAY AS RECOMMENDED BY MANUFACTURER FOR LONG LINE APPLICATIONS.
- PROVIDE MOUNTING PAD AS PER DETAIL PROVIDED.
- 2-STAGE COMPRESSOR UNIT.
- PROVIDE LONG LINE ACCESSORIES PER NOTE 3 WHERE REFRIGERANT PIPE LENGTHS EXCEEDS 80-EQUIVALENT FEET.

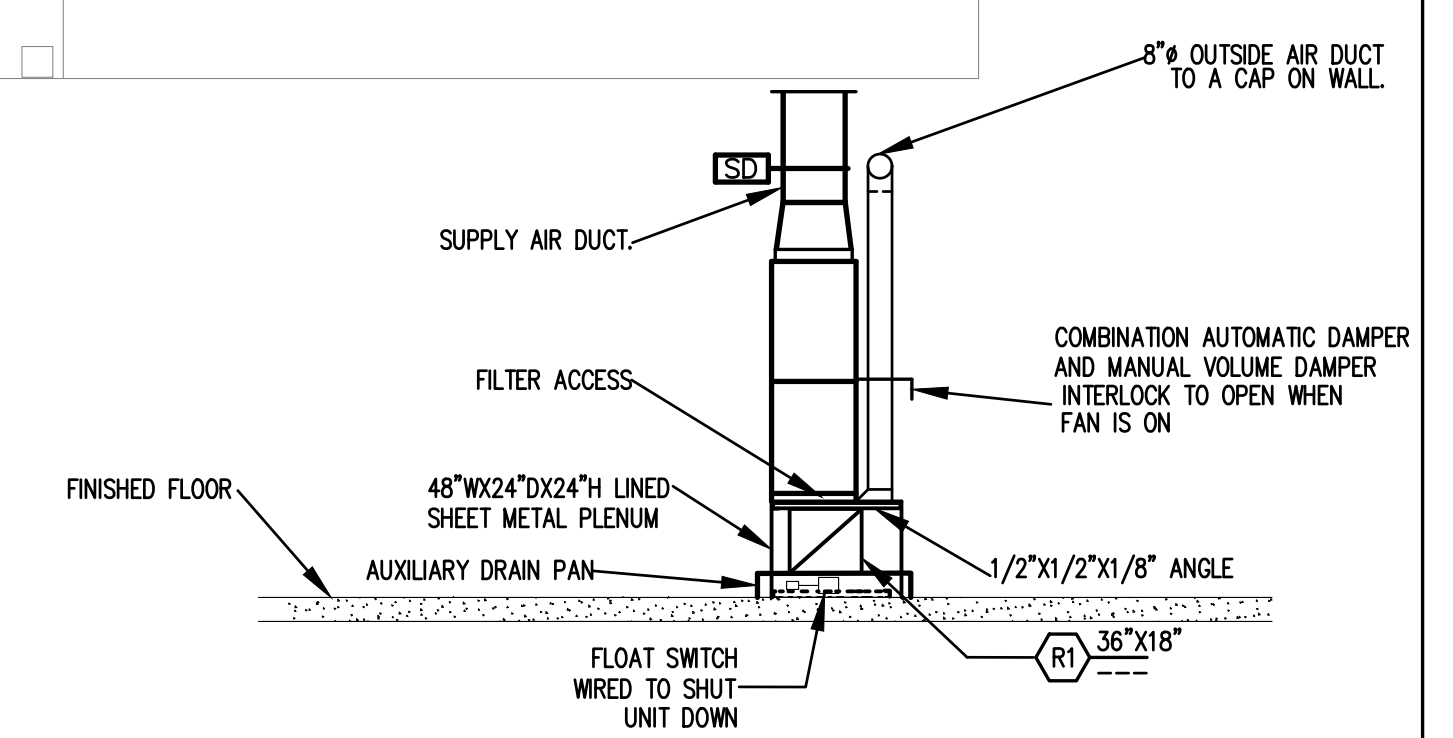
MINI SPLIT SYSTEM SCHEDULE											
OUTDOOR UNIT MARK	INDOOR UNIT MARK	MIN COOLING MBH	MIN HEATING MBH @ 47F	SUPPLY AIR CFM	POWER VAC/PH	SEER	HSPF	CARRIER MODEL #		SERVES	NOTES
								OUTDOOR	INDOOR		
HPU-1	ACU-1	17.5	18.0	680	208/1	19.5	9.6	38MAQB18---3	40MAQB18B---3	A35 SERVER	1:2:3:4:5:6:7:8:9:10
HPU-2	ACU-2	17.5	18.0	680	208/1	19.5	9.6	38MAQB18---3	40MAQB18B---3	A34 LOW VOLT	1:2:3:4:5:6:7:8:9:10

- VERIFY ELECTRICAL POWER REQUIREMENTS WITH ELECTRICAL PLANS WHICH TAKES PRECEDENCE OVER THIS INFORMATION.
- ROUTE CONDENSATE AS NOTED ON PLANS. COORDINATE WITH PLUMBING.
- CONDENSATE DRAIN SHALL BE PVC.
- CONTRACTOR MUST COORDINATE EXACT LOCATION OF DRAIN IN THE FIELD WITH PLUMBING CONTRACTOR. MECHANICAL MUST ROUTE CONDENSATE TO APPROPRIATE LOCATION OF DISPOSAL.
- PROVIDE DISCONNECT AND ELECTRICAL CONNECTION TO OUTDOOR UNIT PER MANUFACTURER'S INSTRUCTIONS.
- PROVIDE MANUFACTURER'S WIRED REMOTE CONTROLLER K5ACN501AAA.
- PROVIDE REMOTE SEAL SENSITIVE CONDENSATE OVERFLOW SWITCH TO SHUT UNIT DOWN IN CASE OF CONDENSATE OVERFLOW.
- MINI SPLIT SYSTEM MOUNTED ON WALL (SEE PLANS). PROVIDE MANUFACTURER'S WIRED THERMOSTAT.
- PROVIDE FLOAT ACTIVATED CONDENSATE PUMP TO PUMP CONDENSATE DOWN TO DRAIN WHERE REQUIRED. PUMP SHALL BE INTEGRAL TO THE UNIT CABINET.

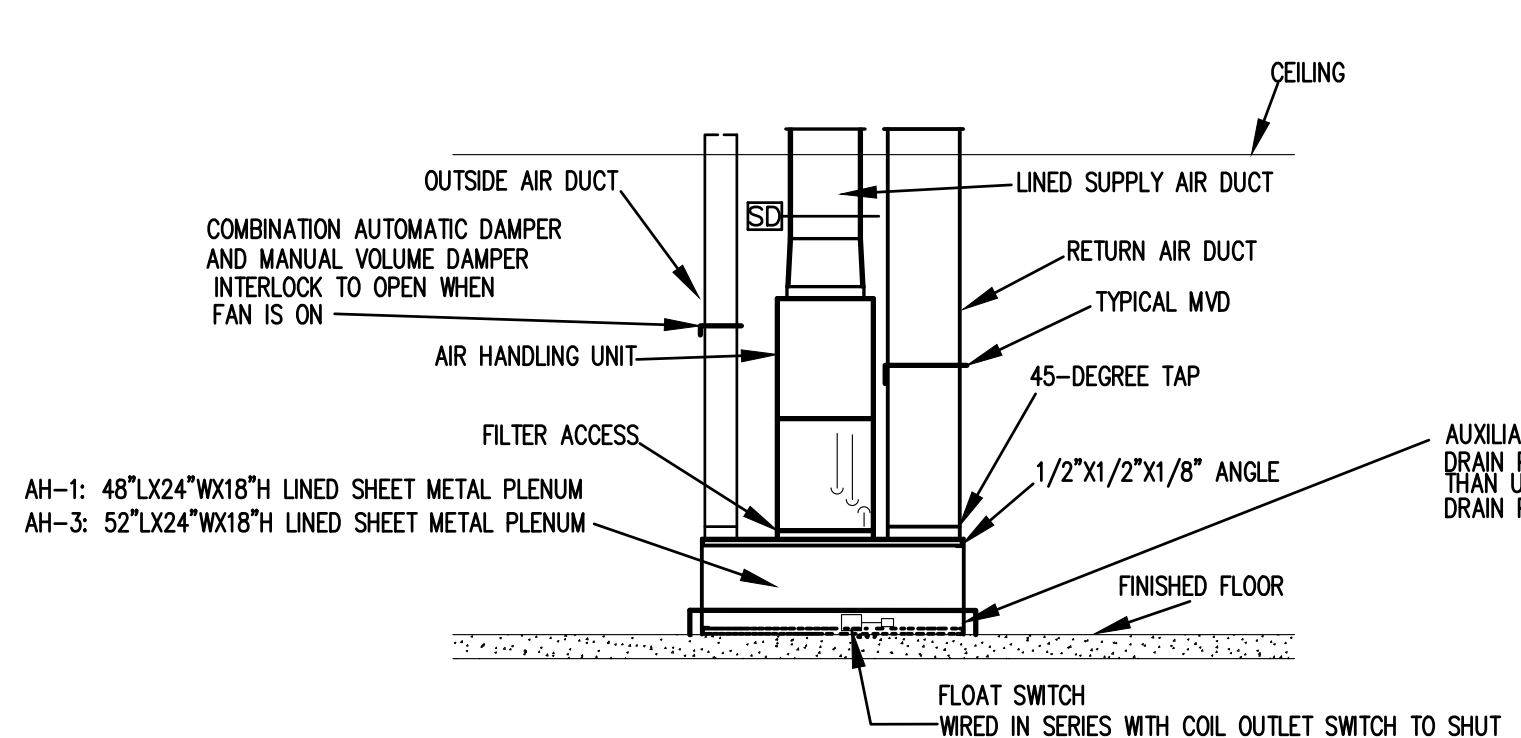
FAN SCHEDULE									
MARK	CFM	EXT. SP IN. W.G.	DRIVE TYPE	MOTOR WATTS	MAX. SONES	POWER/PHASE	SERVES	BASIS OF DESIGN	NOTES
EF-1	70	0.25	DIRECT	20.0	1.8	115/1	A08 WOMEN TOILET	GREENHECK SP-B90	1:2:3:5
EF-2	70	0.25	DIRECT	20.0	1.8	115/1	A07 MEN TOILET	GREENHECK SP-B90	1:2:3:5
EF-3	150	0.30	DIRECT	128.0	3.6	115/1	TRANSFORMER ROOM	GREENHECK SP-B150	1:2:3:6
EF-4	70	0.25	DIRECT	20.0	1.8	115/1	A12 WOMEN TOILET	GREENHECK SP-B90	1:2:3:5
EF-5	70	0.25	DIRECT	20.0	1.8	115/1	A13 MEN TOILET	GREENHECK SP-B90	1:2:3:5
EF-6	70	0.25	DIRECT	20.0	1.8	115/1	A14 UNISEX TOILET	GREENHECK SP-B90	1:2:3:5
EF-7	100	0.25	DIRECT	128.0	1.0	115/1	A20 WOMEN	GREENHECK SP-B150	1:2:3:4
EF-8	100	0.25	DIRECT	128.0	1.0	115/1	A21 MEN	GREENHECK SP-B150	1:2:3:4
EF-9	150	0.30	DIRECT	128.0	3.6	115/1	A36 ELEC.	GREENHECK SP-B150	1:2:3:6
EF-10	70	0.25	DIRECT	20.0	1.8	115/1	C01 UNISEX TOILET	GREENHECK SP-B90	1:2:3:5
EF-11	70	0.25	DIRECT	20.0	1.8	115/1	C02 UNISEX TOILET	GREENHECK SP-B90	1:2:3:5
EF-12	150	0.30	DIRECT	128.0	3.6	115/1	A06 MAIN DIST PANEL	GREENHECK SP-B150	1:2:3:6
EF-13	150	0.30	DIRECT	128.0	3.6	115/1	B03 ELEC ROOM	GREENHECK SP-B150	1:2:3:6
EF-14	150	0.30	DIRECT	128.0	3.6	115/1	B05 ICE ROOM	GREENHECK SP-B150	1:2:3:6
EF-15	150	0.30	DIRECT	128.0	3.6	115/1	B10 CHAIR	GREENHECK SP-B150	1:2:3:



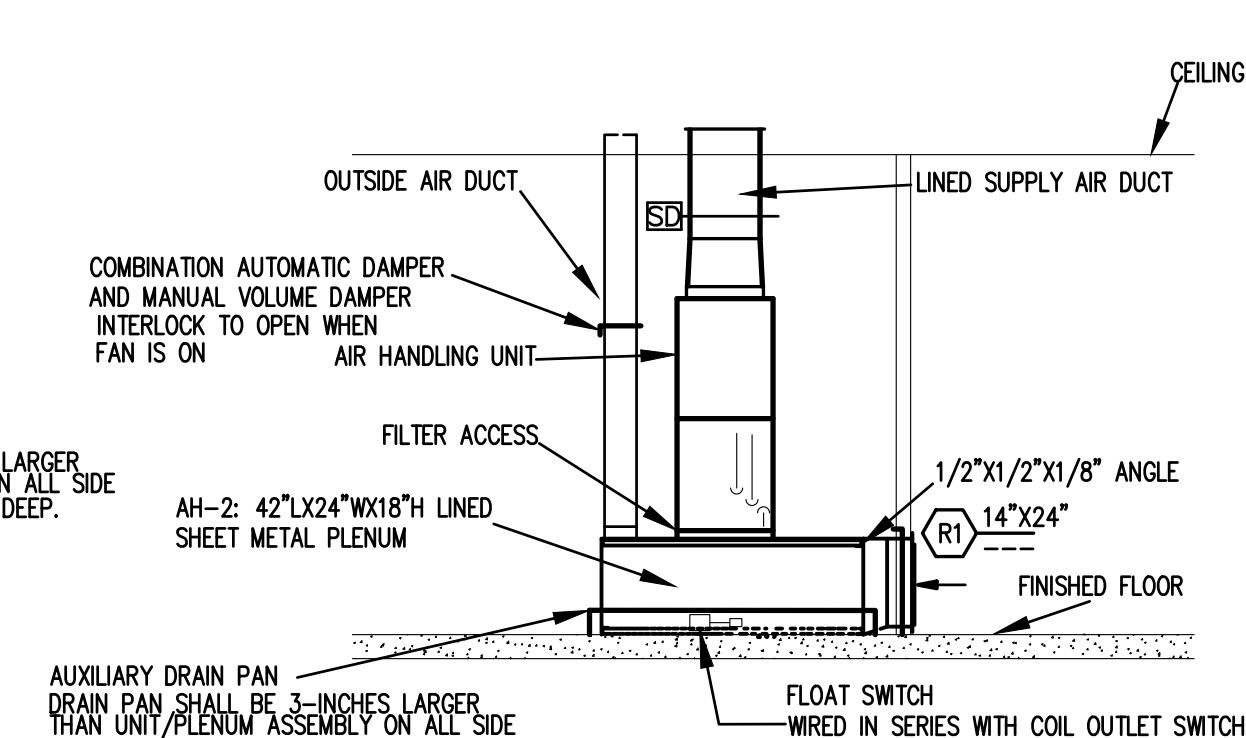
1 MEC ANICAL ONING PLAN
SCALE: 1/8"=1'-0"



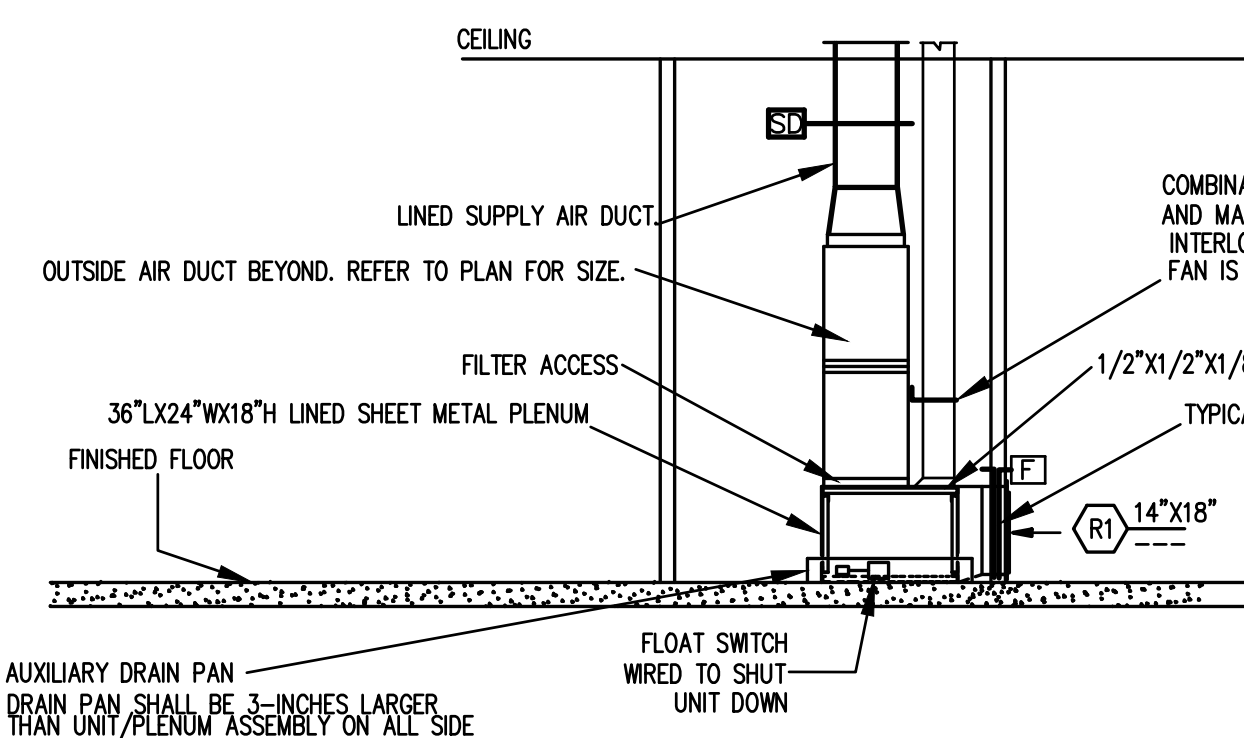
A - - FRONT VIEW DETAIL
SCALE: N.T.S.



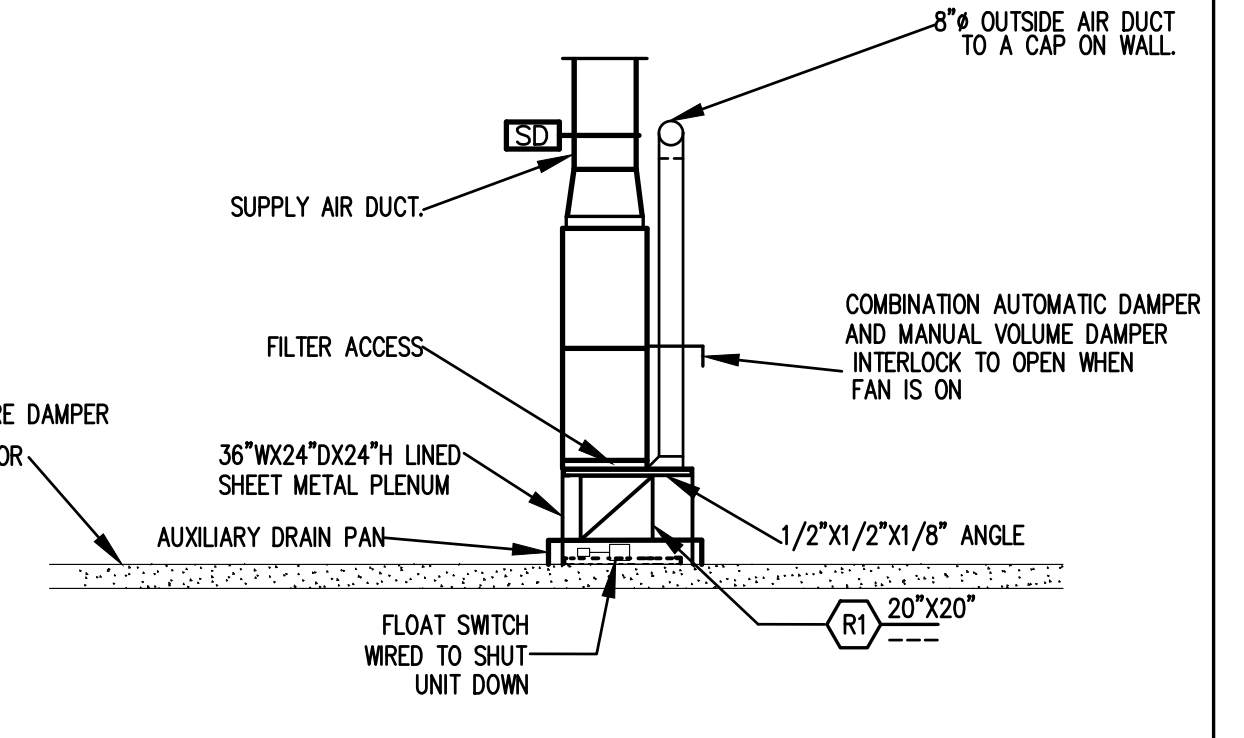
A -1 A - - FRONT VIEW DETAIL
SCALE: N.T.S.



A - - FRONT VIEW DETAIL
SCALE: N.T.S.



A - - DETAIL
SCALE: N.T.S.



A - - FRONT VIEW DETAIL
SCALE: N.T.S.

ALPHA BLDG SET 08-27-2024

PHASE 1

SEAL: ARUNAL M. PATEL

169 New Street, Macon, GA 31201
(478) 741-4632 - T.E. project # 23-101
www.totalengineers.com

Client: **SUNBELT BUILDERS**

10841 HWY 8 DAVENPORT GA 0014 1770788 0 1 770788 046

Project: **R. L. COUSINS COMMUNITY CENTER
NEWTON CO. BOC RFP #24-04**

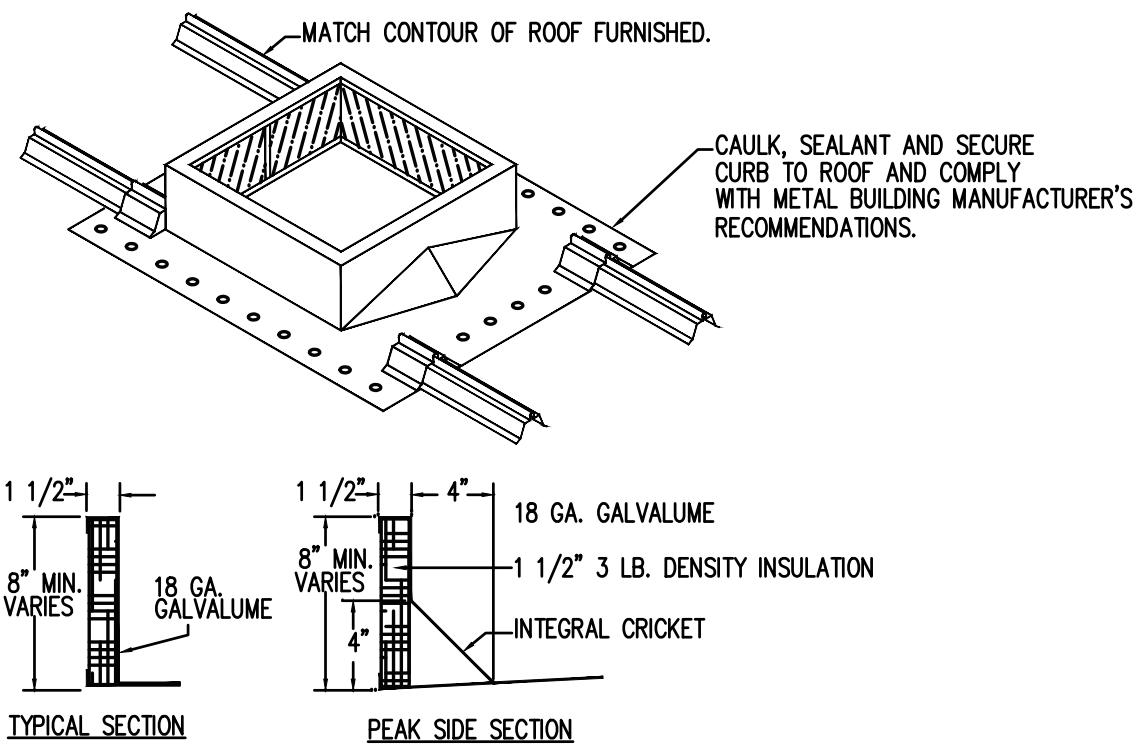
8134 GEIGER STREET, N.W.
COVINGTON, GEORGIA

Issue	Date	Initiated	Drawn	Revision	Description

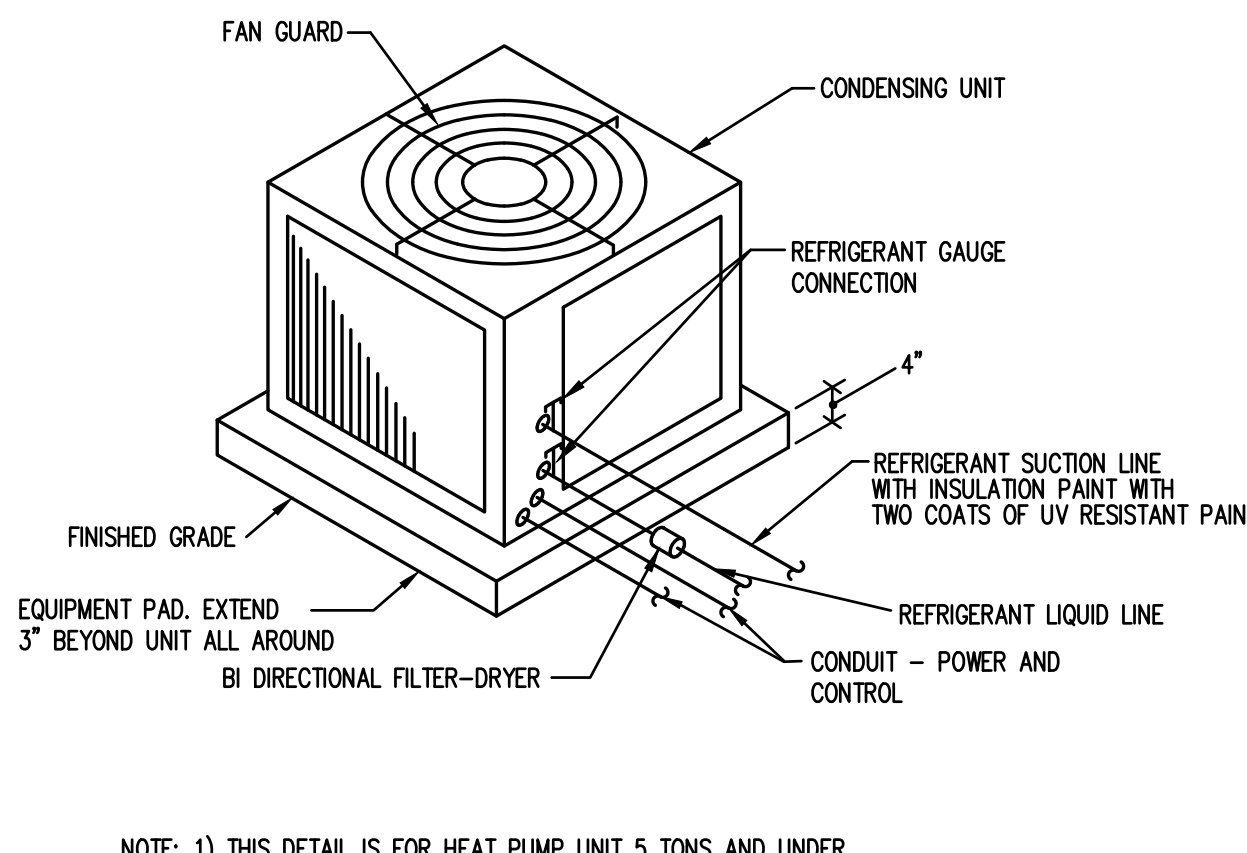
Project No.:
Drwg. Date: 04/15/24
Drwg. Revision:
Drawn By: JWK & KMP
Checked By: KMP
File Name:

Sheet Title:
**MECHANICAL
DETAILS**

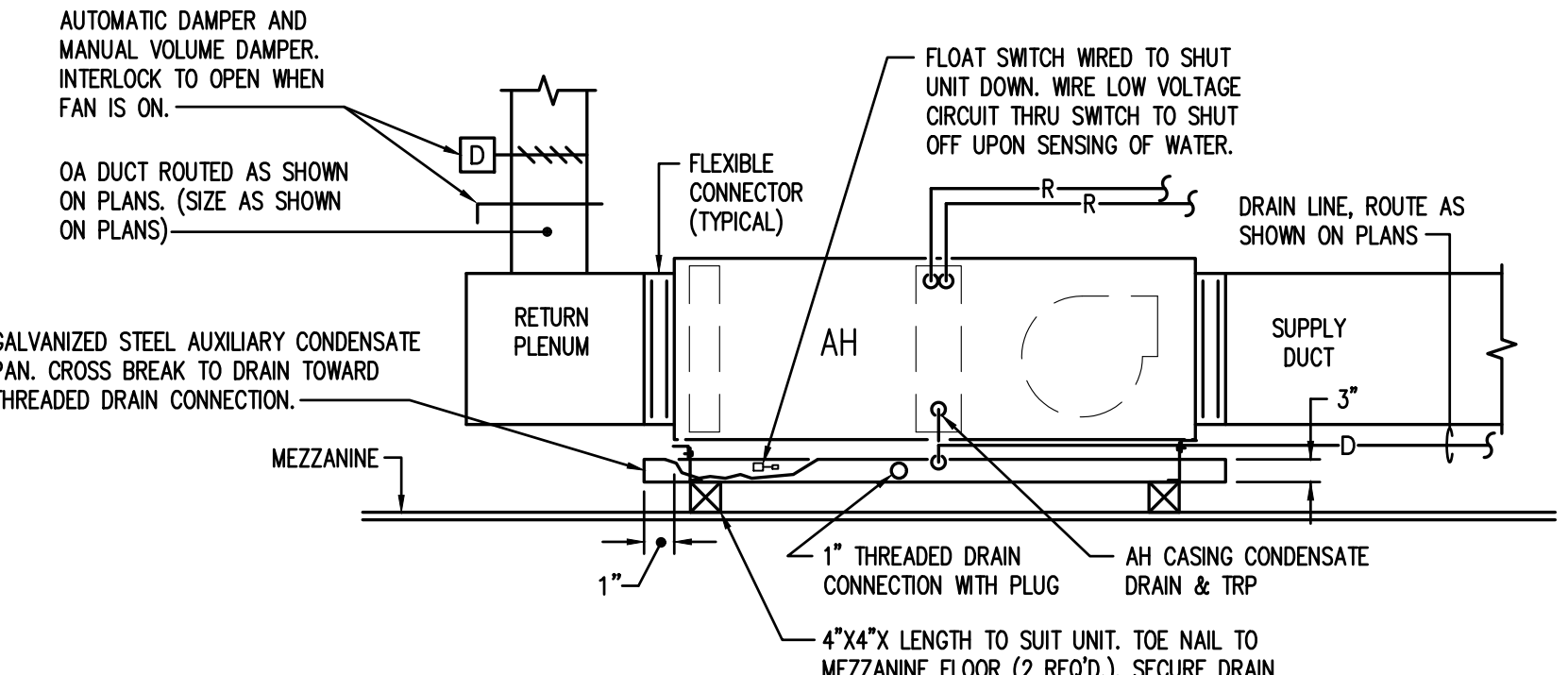
Sheet No.:
M-0.3



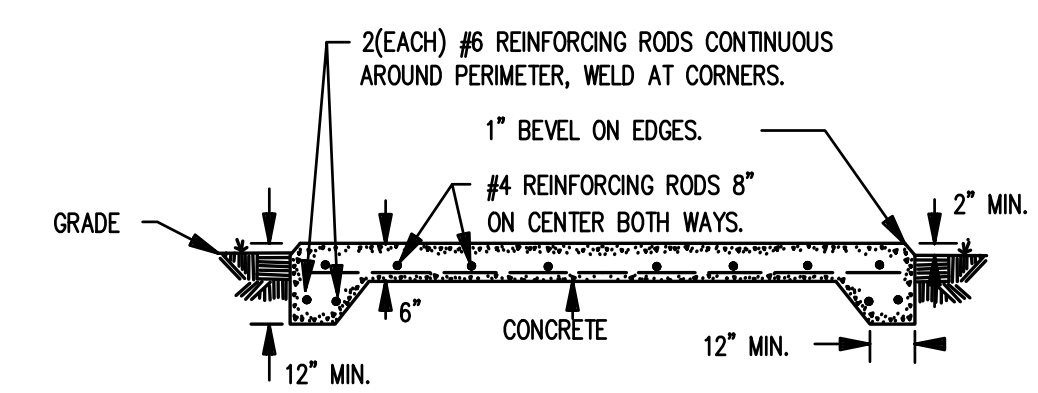
1 METAL ROOF CURB DETAIL
SCALE: N.T.S.



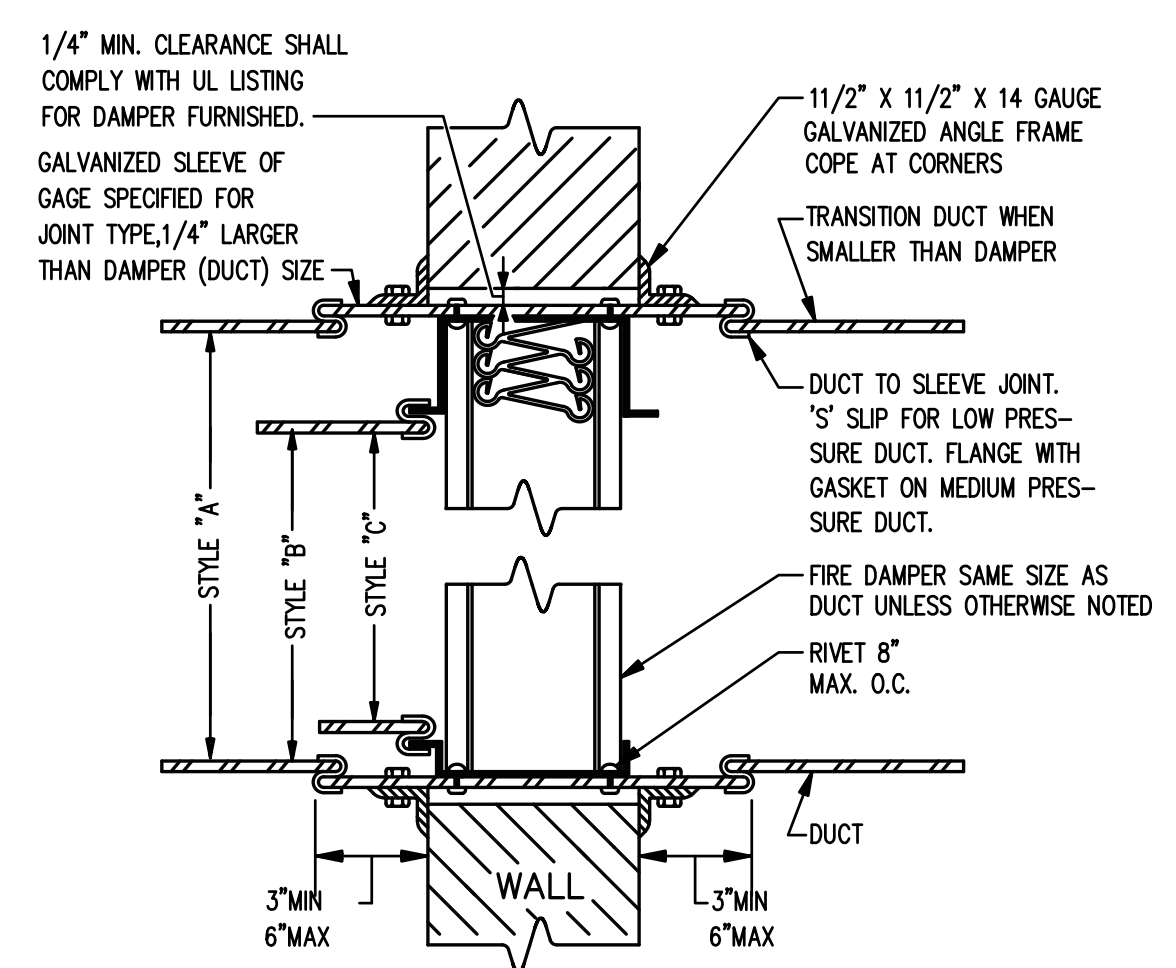
2 AIRCOOLED CONDENSING UNIT SLAB MOUNTED
SCALE: N.T.S.



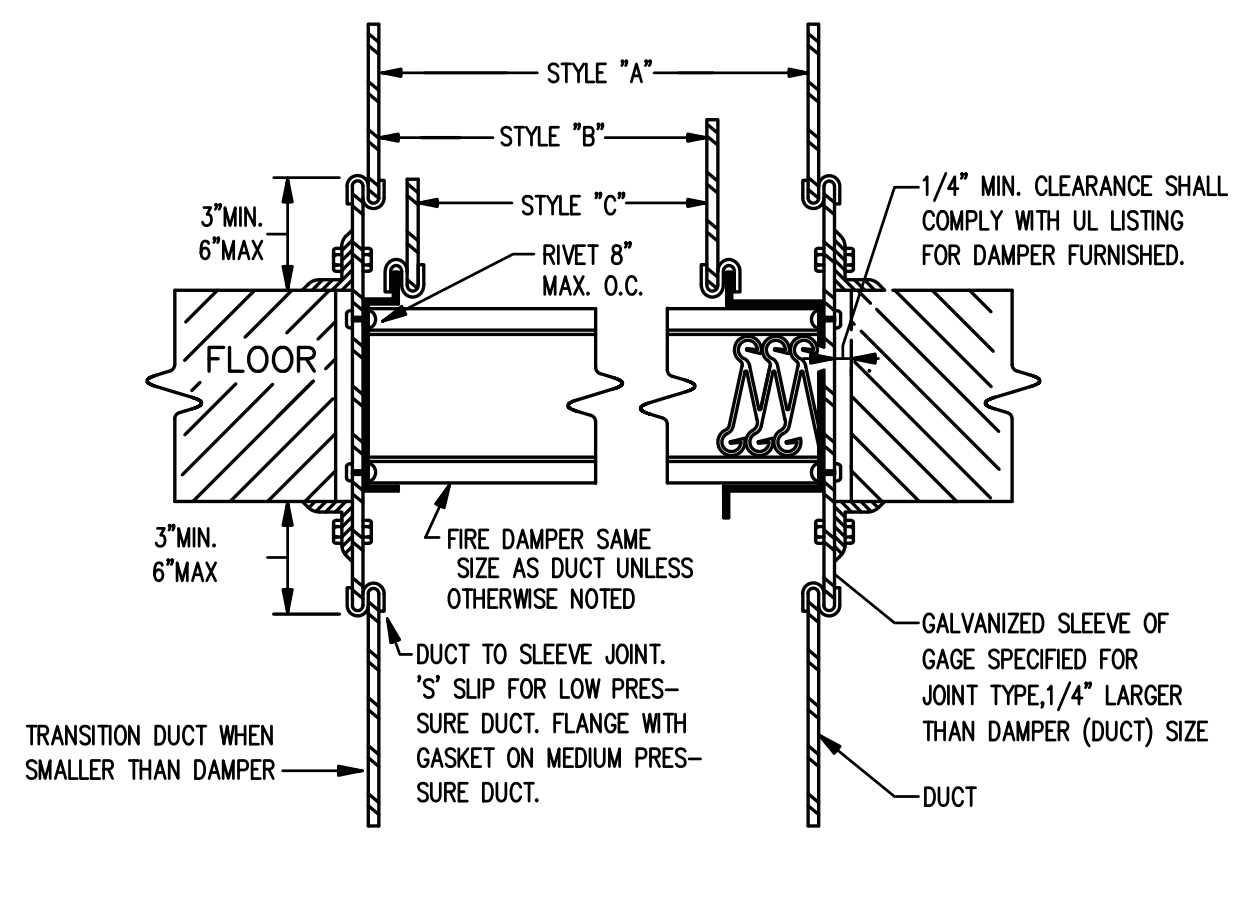
3 A.U. ON MEZZANINE WITH AUXILIARY CONDENSATE PAN
SCALE: N.T.S.



4 EXTERIOR BASE OR GROUND MOUNTED PACKAGED UNIT DETAIL
SCALE: N.T.S.



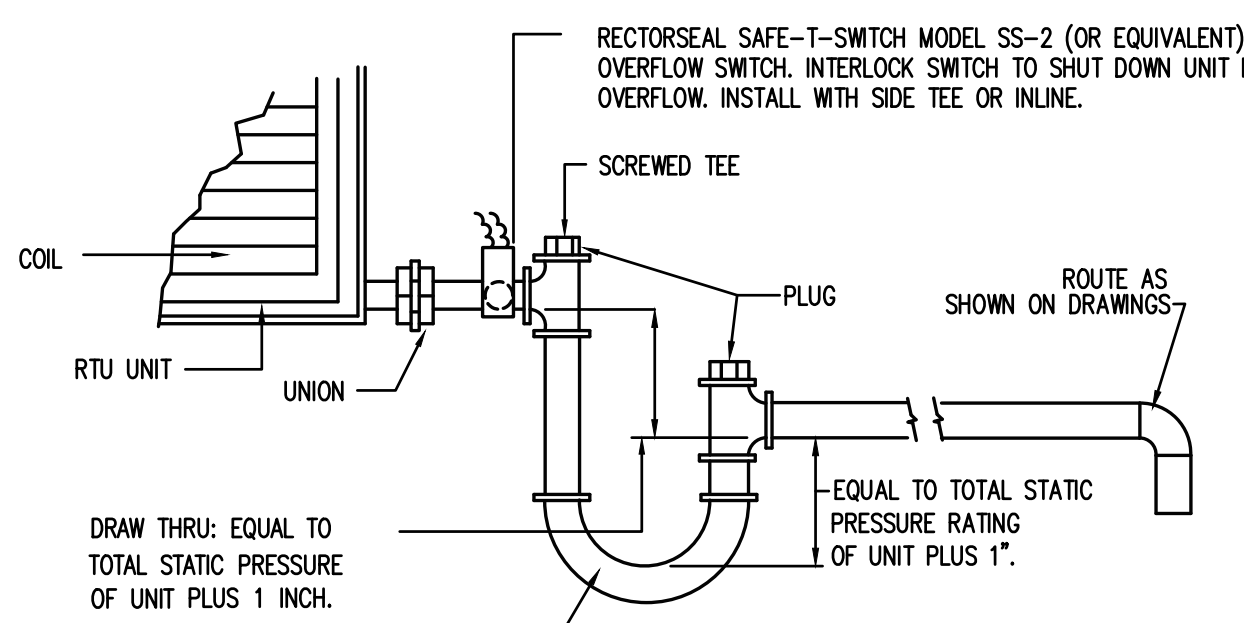
VERTICAL FIRE DAMPER



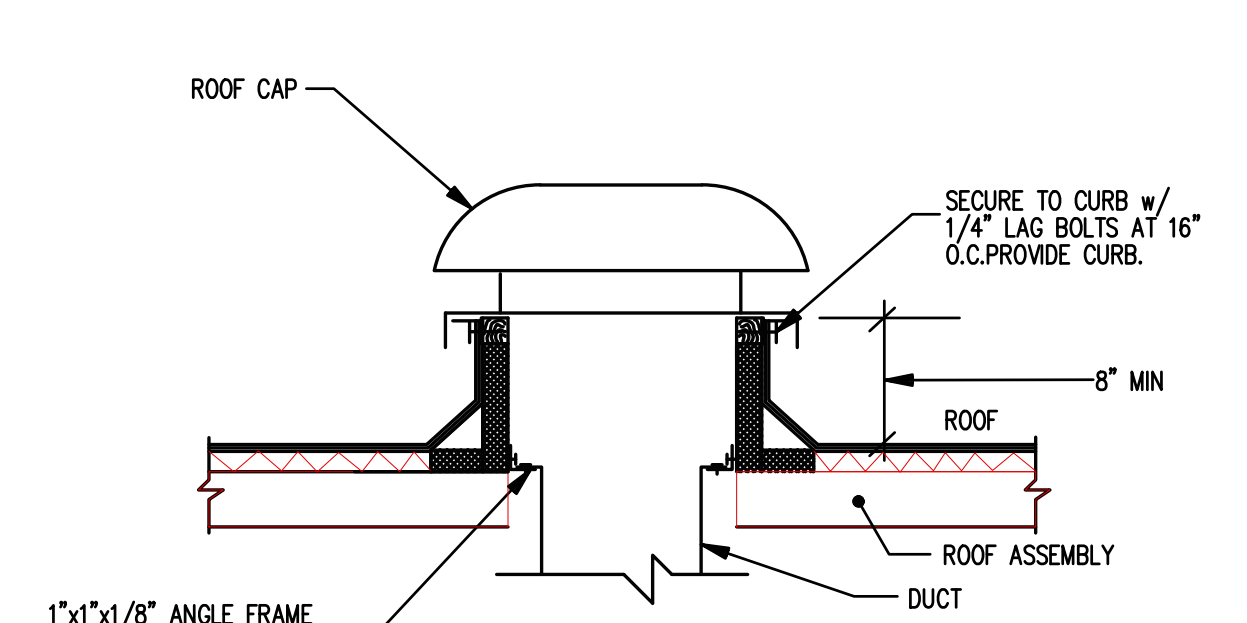
HORIZONTAL FIRE DAMPER

ALL FIRE DAMPERS ON THE PROJECT SHALL BE STYLE 'A' TYPE FIRE DAMPERS UNLESS OTHERWISE NOTED. DAMPERS LOCATED IN MEDIUM OR HIGH PRESSURE DUCTWORK SHALL BE STYLE 'C' FIRE DAMPERS. WHERE DAMPERS ARE INSTALLED IN DRYWALL PARTITION, STUD FRAMING SHALL BE PROVIDED ON ALL FOUR SIDES ON DAMPER.

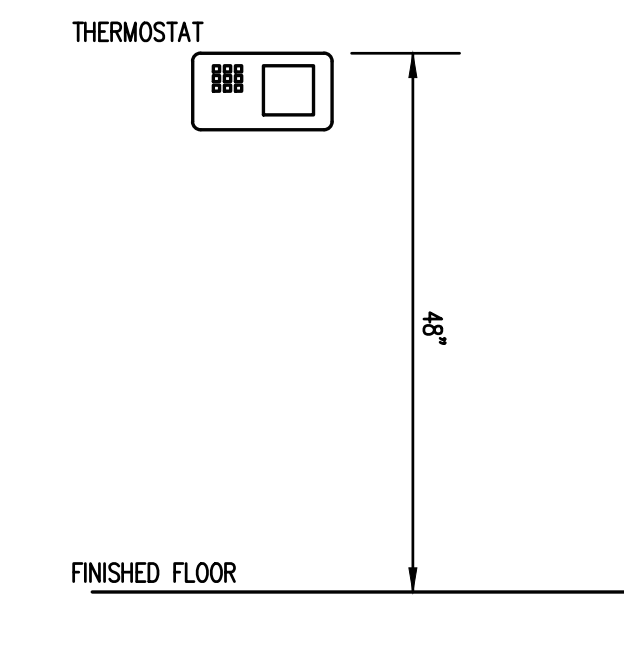
5 FIRE DAMPER DETAIL
SCALE: N.T.S.



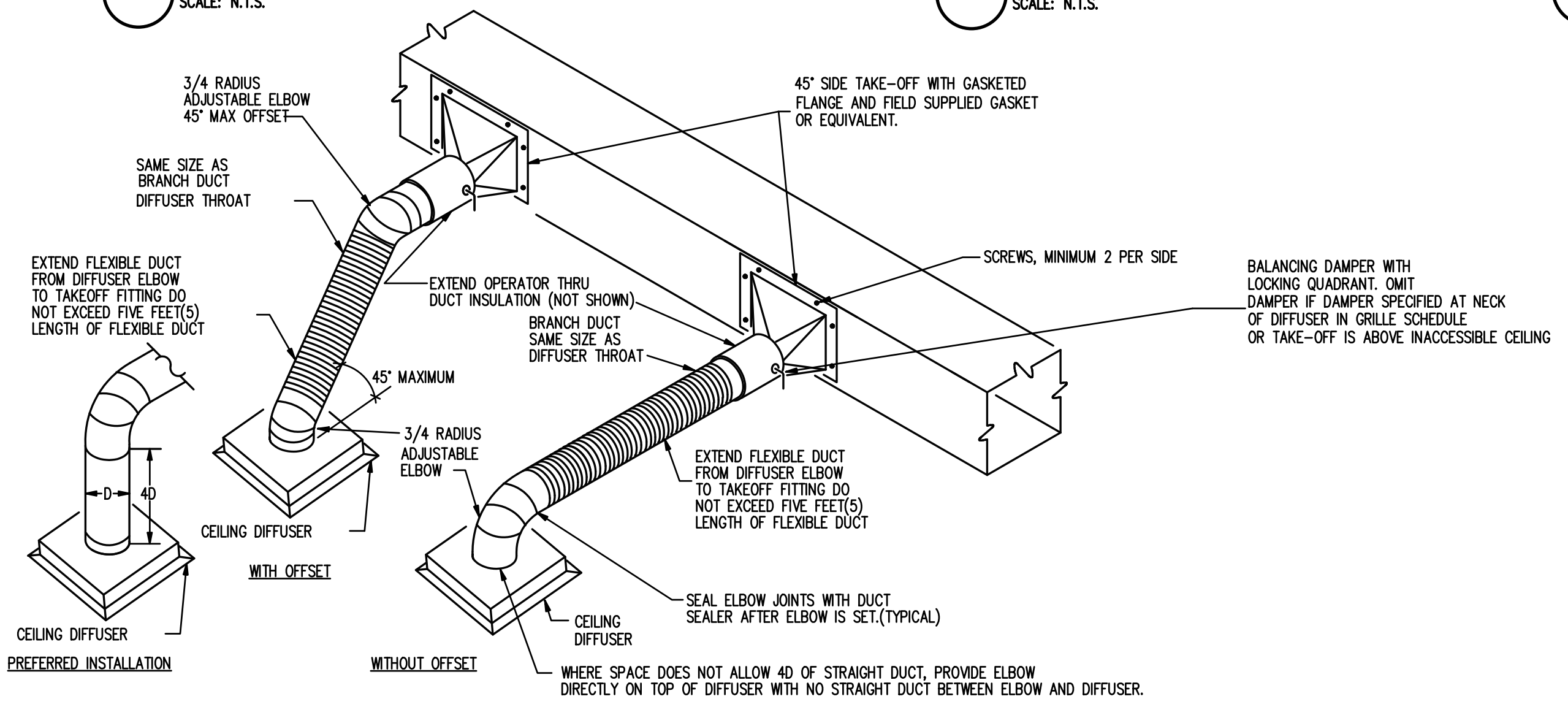
6 CONDENSATE DRAIN DETAIL
SCALE: N.T.S.



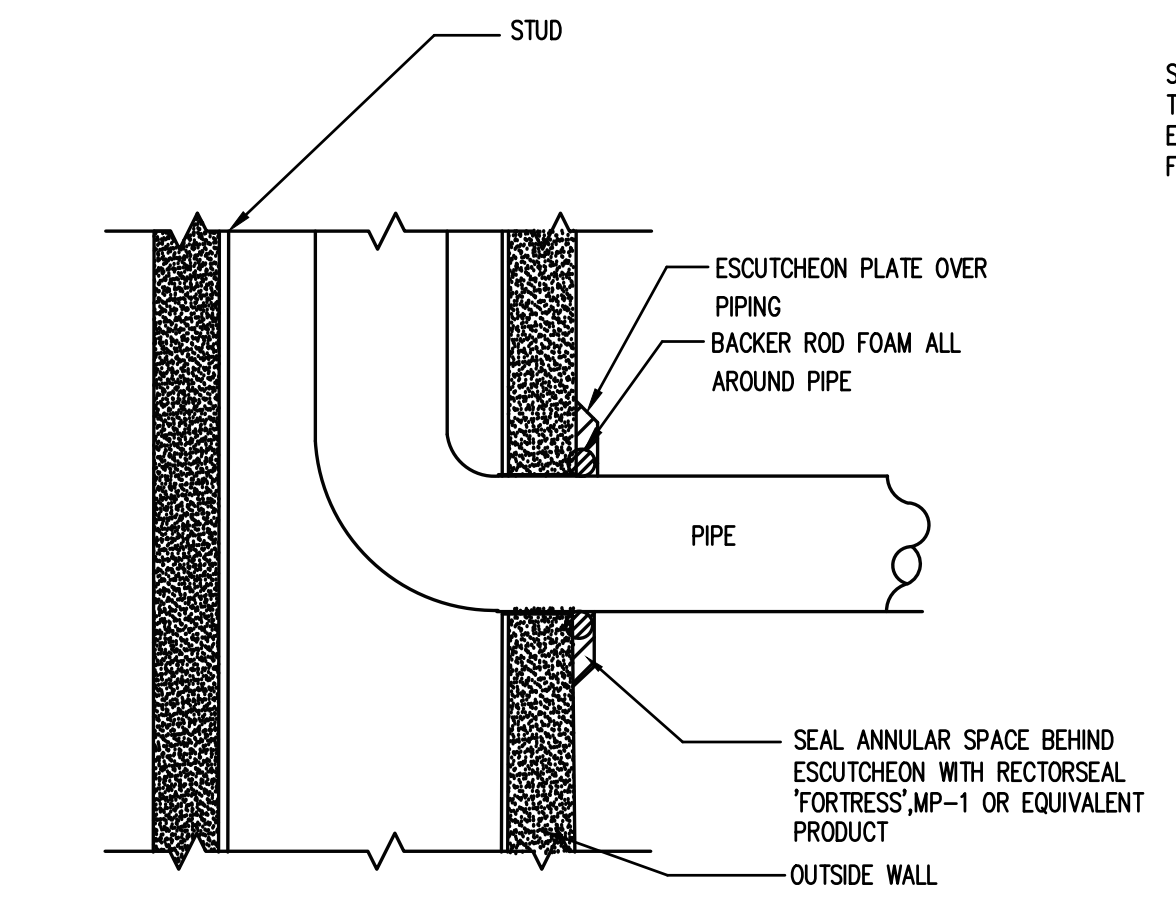
7 ROOF CAP DETAIL
SCALE: N.T.S.



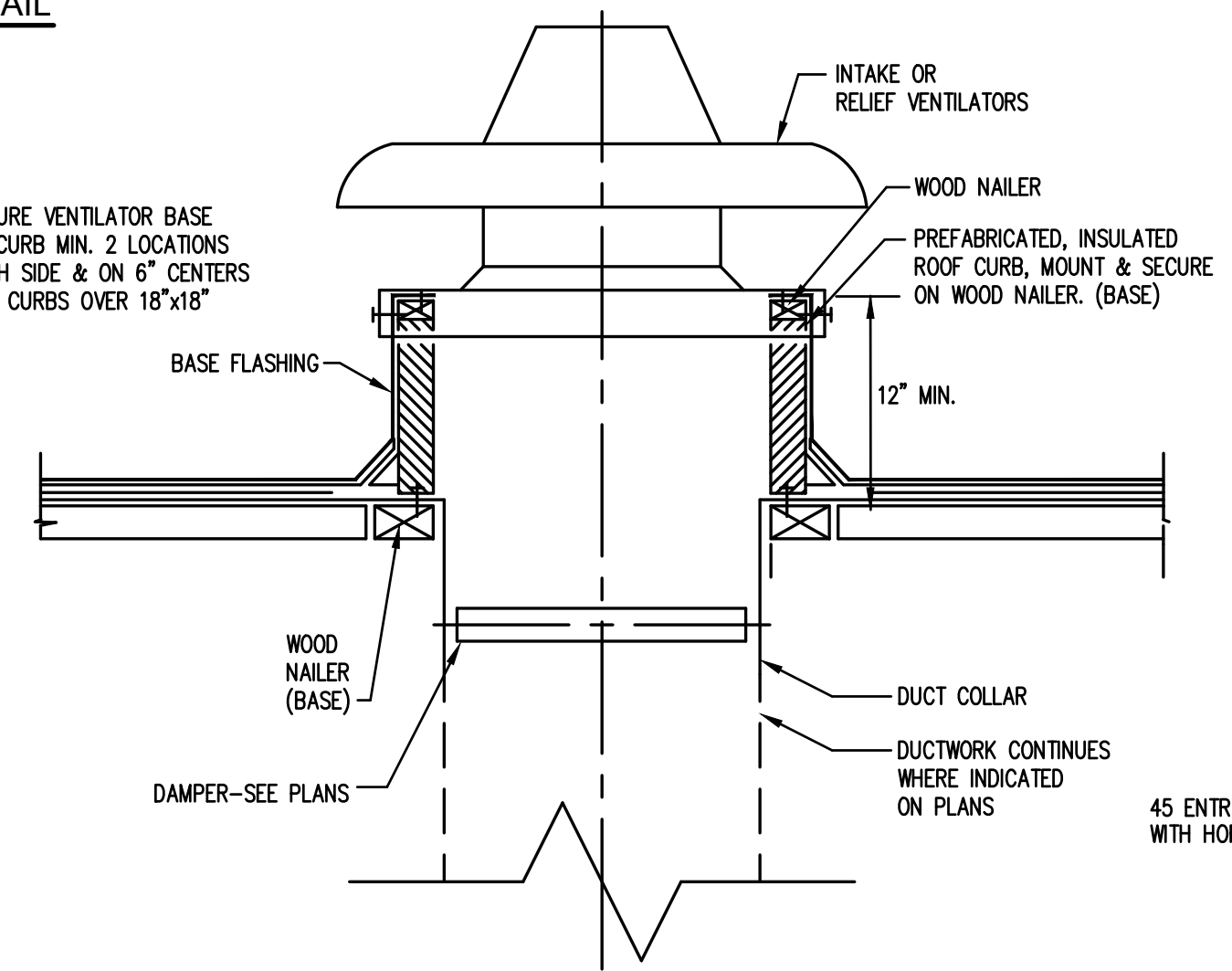
8 T-STAT DETAIL
SCALE: N.T.S.



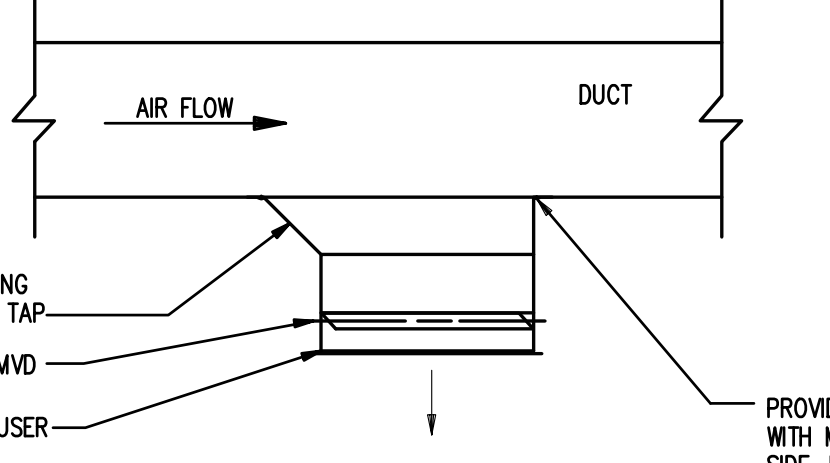
9 DUCT MOUNTED DIFFUSER DETAIL
SCALE: N.T.S.



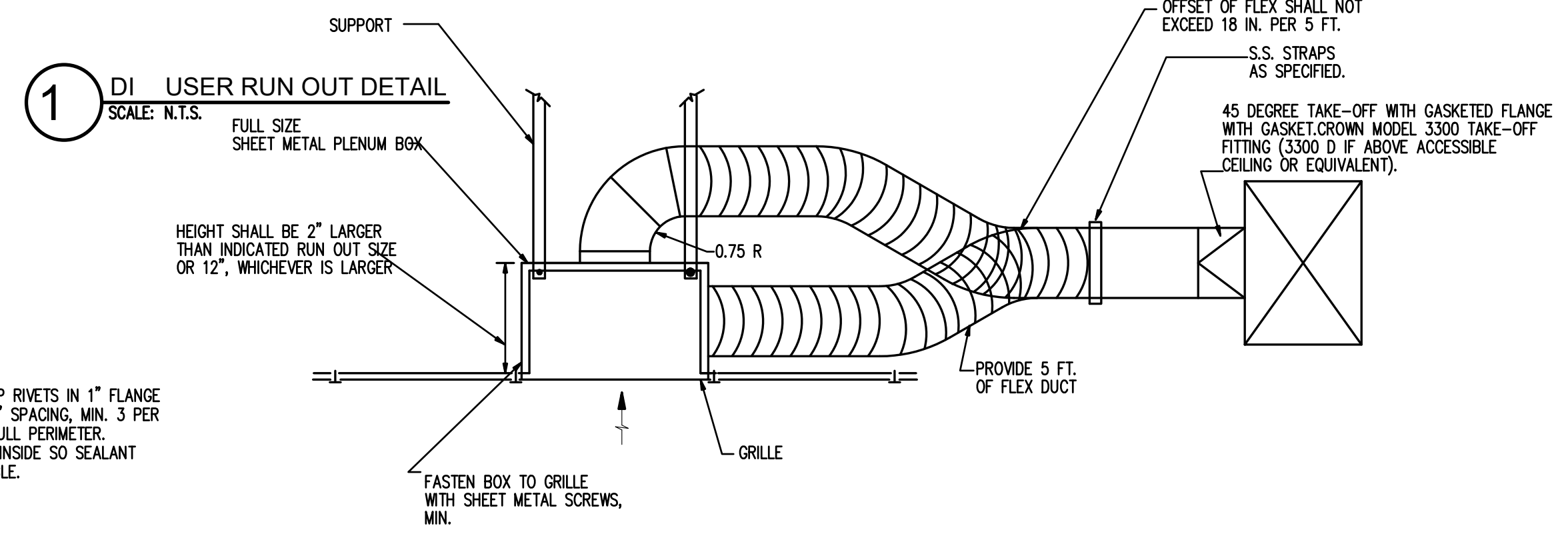
10 CONDENSATE PIPE SLEEVE THROUGH WALL DETAIL
SCALE: N.T.S.



11 ROOF INTAKE VENTILATOR DETAIL
SCALE: N.T.S.

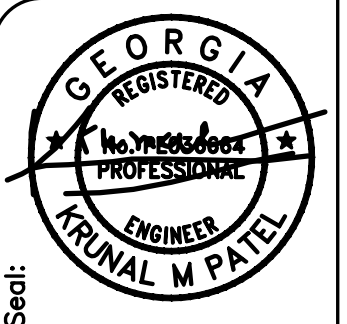


12 DUCT MOUNTED DIFFUSER DETAIL
SCALE: N.T.S.



13 TYPICAL GRILLE WITH LINED PLENUM DETAIL
SCALE: N.T.S.

ALPHA BLDG SET 08-27-2024



TOTAL ENGINEERS
165 New Street, Macon, GA 31201
(478) 741-4632 - T.E. Project # 23-101
www.totalengineers.com

SUNBELT BUILDERS
10841 HWY 8 DAVENPORT, GA 0014 1770798 0 1 770798 046

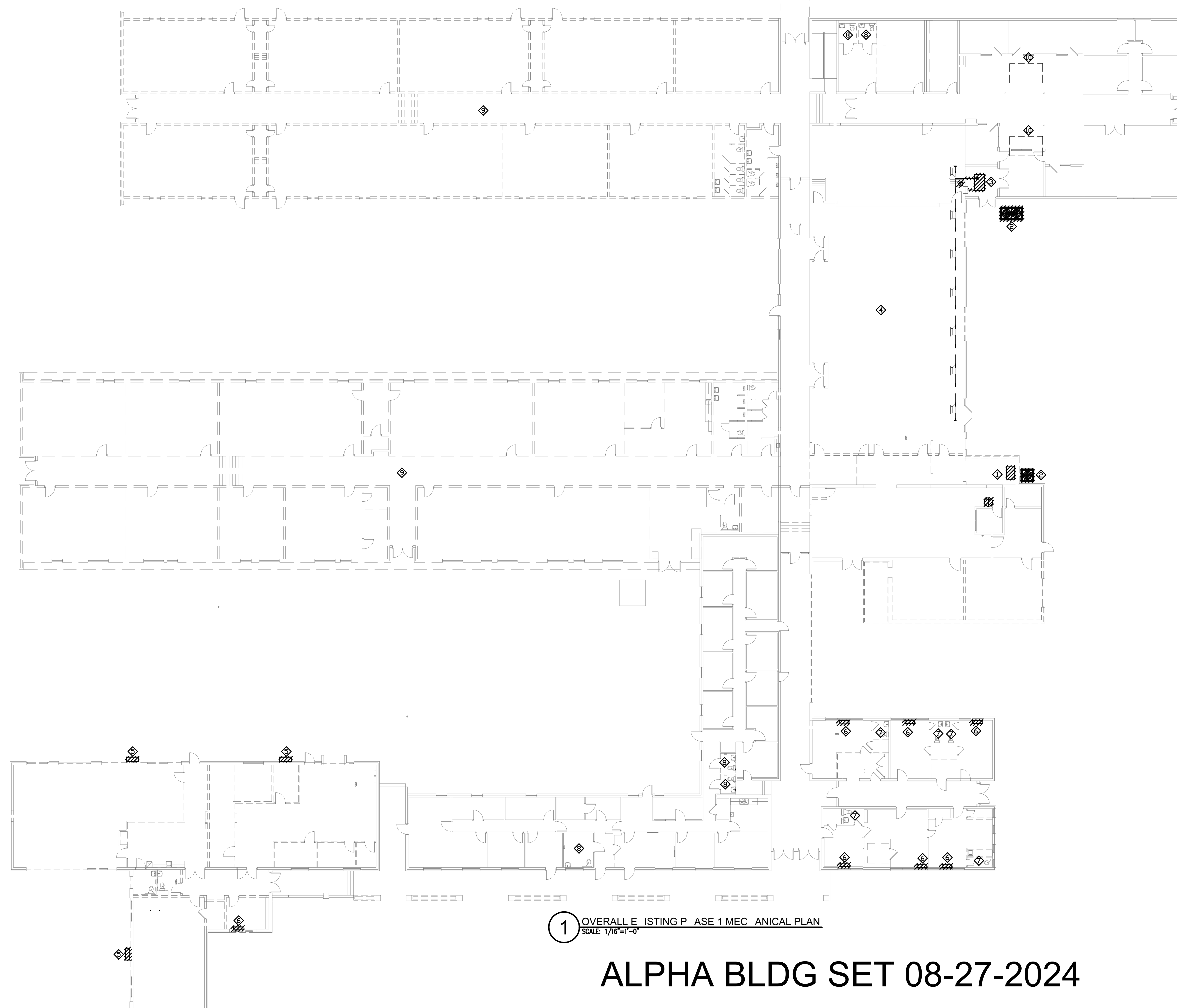
R. L. COUSINS COMMUNITY CENTER
NEWTON CO. BOC RFP #24-04
8134 GEIGER STREET, N.W.
COVINGTON, GEORGIA

Issue	Date	Initiated	Drawn	Revision	Description

Project No.:
Drwg. Date: 04/15/24
Drwg. Revision:
Drawn By: JWK & KMP
Checked By: KMP
File Name:

Sheet Title:
MECHANICAL DETAILS

Sheet No.:
M-0.4



1 OVERALL EXISTING PHASE 1 MECHANICAL PLAN
SCALE: 1/16"=1'-0"

ALPHA BLDG SET 08-27-2024

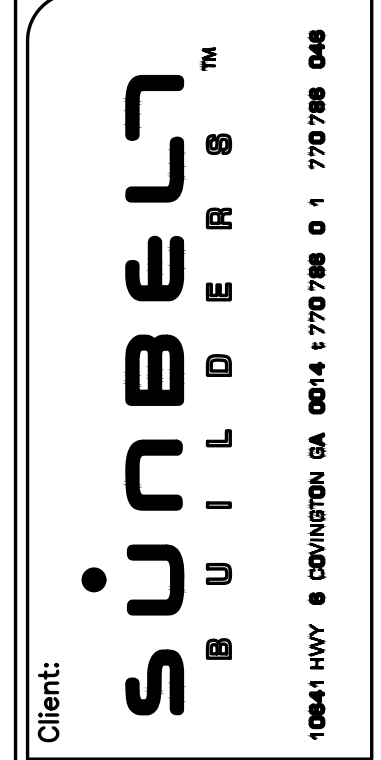
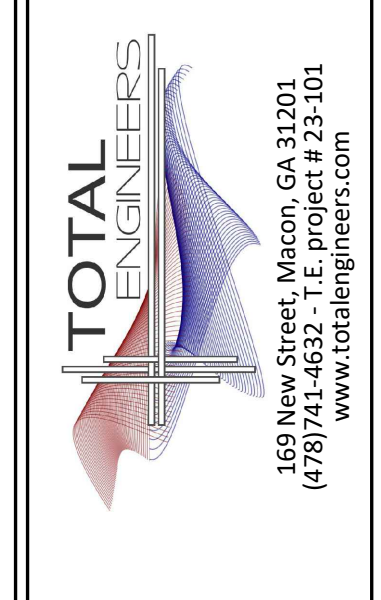
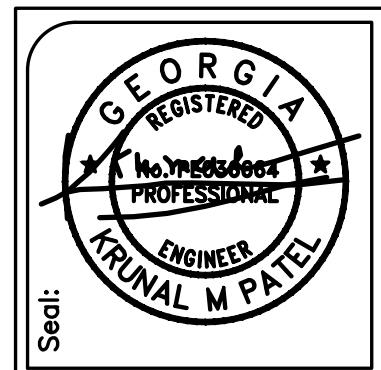
GENERAL DEMOLITION NOTES

- A) DRAWINGS ARE DIAGRAMMATIC AND SHOW THE GENERAL PROXIMITY OF EQUIPMENT, PIPES, DUCTWORK ETC., ARE NOT TO BE SCALED. ALL DIMENSIONS SHALL BE VERIFIED BY THE CONTRACTOR AT BUILDING SITE.
- B) THE DEMOLITION PLANS HAVE BEEN PREPARED TO ASSIST THE CONTRACTOR IN DETERMINING THE SCOPE OF DEMOLITION WORK AND SHOULD NOT BE CONSTRUED TO BE ALL OF DEMOLITION REQUIRED. THE CONTRACTOR SHALL VISIT JOB SITE (AFTER CAREFULLY REVIEWING THE CONTRACT DOCUMENTS) AND DETERMINE EXACT AREAS AND QUANTITIES OF EXISTING MATERIALS TO BE REMOVED TO ACCOMPLISH NEW CONSTRUCTION.
- C) WHERE THE DOCUMENTS INDICATE EQUIPMENT TO BE REMOVED OR DEMOLISHED. CONTRACTOR SHALL REMOVE ALL ASSOCIATED MATERIALS INCLUDING SUPPORT, HANGERS, AND ASSOCIATED ACCESSORIES.
- D) CONTRACTOR SHALL DISPOSE OF ANY MATERIAL TO BE DISCARDED IN ACCORDANCE WITH ALL LAWS AND REGULATIONS.
- E) IF CONTRACTOR'S OBSERVATIONS REVEAL THE PRESENCE OF ASBESTOS IN HVAC DUCTWORK, EQUIPMENT, AND INSULATION WHICH MUST BE DISTURBED DURING THE COURSE OF THIS WORK, CONTRACTOR MUST FOLLOW ALL LAWS AND REGULATIONS APPLICABLE TO REMOVAL OF ASBESTOS MATERIAL TO REMOVE IT.
- F) UNUSED SLEEVES LEFT OPEN BY REMOVAL OF PIPING SHALL BE CUT FLUSH WITH THE FINISHED SLAB OR WALL, FILLED WITH NON-SHRINKING GROUT AND/OR FIRE RATED FOAM FLUSH WITH BOTH SIDES OF SLAB OR WALL TO MAINTAIN SLAB OR WALL FIRE RATING.
- G) ALL EXISTING EQUIPMENT REMOVED OR DEMOLISHED SHALL BE A PROPERTY OF THE CONTRACTOR, UNLESS OTHERWISE NOTED AND SHALL BE REMOVED FROM THE FACILITY AS REQUIRED BY CODES AND REGULATIONS.

LINE LEGEND	
	EXISTING TO REMAIN
	CONNECT TO EXISTING

KEY NOTES (THIS SHEET ONLY):

- ◇ REMOVE EXISTING AIR-HANDLING UNIT WITH ALL ITS DUCTWORK CONTROLS AND ACCESSORIES.
- ◇ REMOVE EXISTING CONDENSING UNIT WITH ALL ITS ACCESSORIES AND CONTROLS.
- ◇ REMOVE AIR HANDLING UNIT WITH ALL ITS ACCESSORIES AND CONTROLS. REMOVE ALL SUPPLY AIR DUCTWORK LOCATED WITHIN MECHANICAL ROOM. REFER TO A NEW WORK PLAN FOR CONNECTION POINT OF SUPPLY AIR DUCTWORK. REMOVE RETURN AIR DUCTWORK UNTIL THE RETURN AIR PLENUM BEHIND GRILL. CONNECT NEW RETURN AIR DUCTWORK TO EXISTING RETURN AIR GRILL WITHIN MECHANICAL ROOM.
- ◇ CONTRACTOR SHALL CLEAN EXISTING DUCTWORK, AND GRILLS LOCATED INSIDE ACTIVITY ROOM. REPAIR ANY APPARENT DAMAGES TO EXISTING DUCTWORK SYSTEM.
- ◇ REMOVE EXISTING WALL MOUNTED PACKED UNIT WITH ALL ITS ACCESSORIES, DUCTWORK AND CONTROLS.
- ◇ REMOVE PTAC UNIT WITH ALL ITS ACCESSORIES AND CONTROLS.
- ◇ REMOVE EXHAUST FAN, DUCTWORK ACCESSORIES AND CONTROLS IN BATHROOM.
- ◇ REMOVE EXHAUST FAN SERVING BATHROOM. CONNECT NEW EXHAUST FAN TO EXISTING EXHAUST DUCT TO OUTSIDE.
- ◇ REMOVE ALL MECHANICAL EQUIPMENT, ACCESSORIES, DUCTWORK AND CONTROL LOCATED WITHIN THIS WING.
- ◇ EXISTING PACKAGED UNIT SERVING CASA AREA SHALL REMAIN AS IS. CONTRACTOR SHALL PROVIDE A REGULAR MAINTANCE WORK TO THE UNIT. CHECK REFRIGERANT CHANGE, CLEAN COILS AND MOTORS.



Client: **R. L. COUSINS COMMUNITY CENTER**
NEWTON CO. BOC RFP #24-04
 8134 GEIGER STREET, N.W.
 COVINGTON, GEORGIA

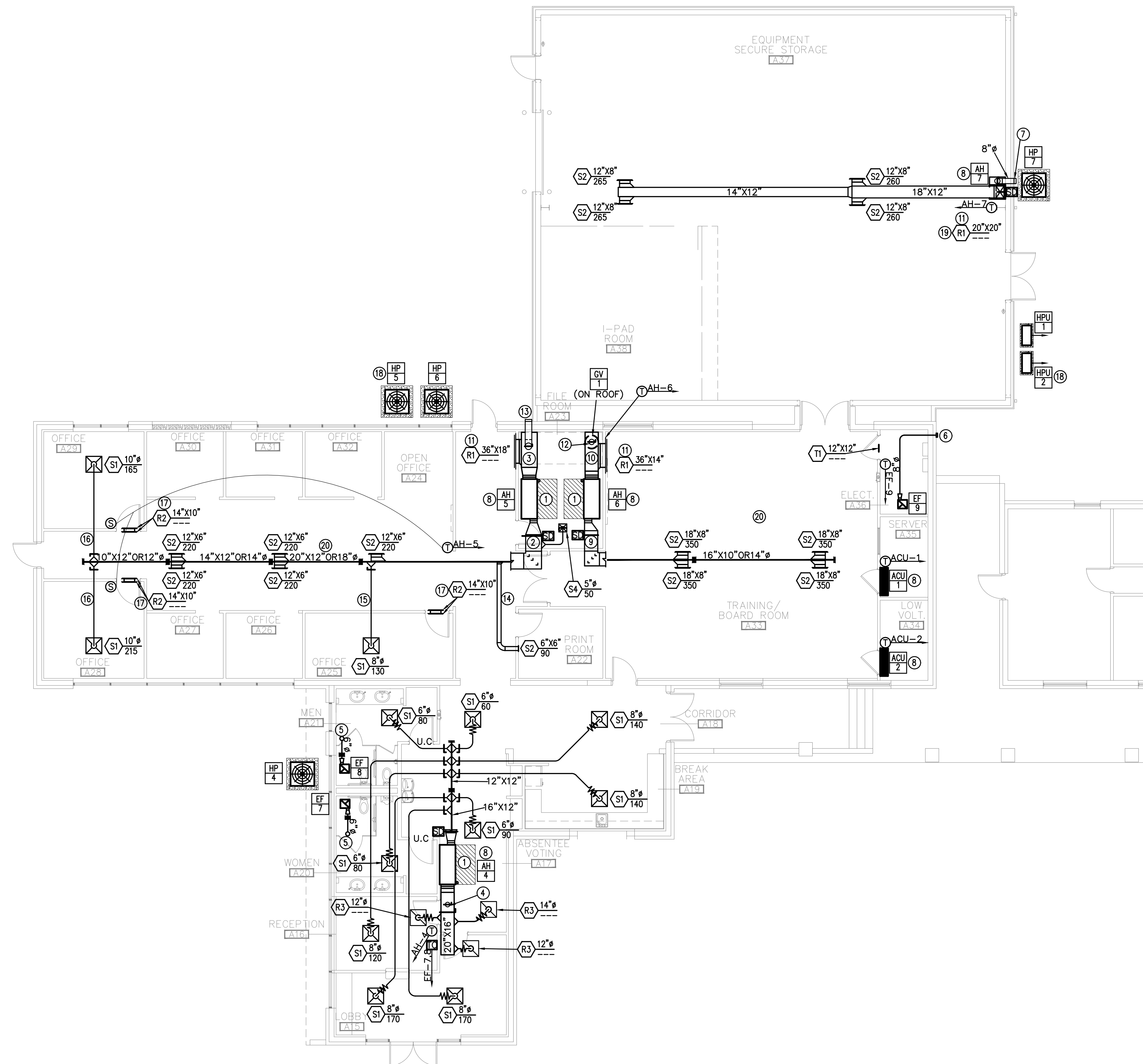
Issue	Date	Drawn	Revision	Description

Project No.:
 Drwg. Date: 04/15/24
 Drwg. Revision:
 Drawn By: JWK & KMP
 Checked By: KMP
 File Name:

Sheet Title:
OVERALL EXISTING MECHANICAL PLAN

Sheet No.:
M-1.0

PHASE 1



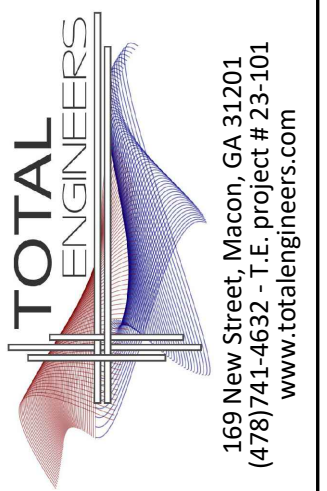
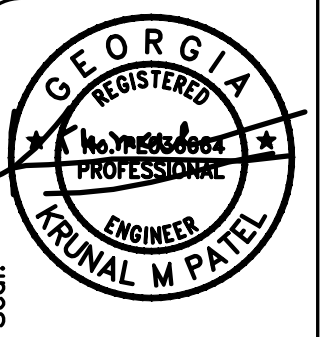
1 ENLARGED MECHANICAL PLAN
SCALE: 1/8" = 1'-0"

KEY NOTES (THIS SHEET ONLY):

- ① UNIT ACCESS SPACE.
- ② 24"x14" RECTANGULAR DUCTWORK OR 20" SPIRAL ROUND DUCTWORK.
- ③ 24"x20" RETURN AIR DUCT.
- ④ 7" OUTSIDE AIR DUCT UP TO 7" OUTSIDE AIR CAP ON ROOF.
- ⑤ 6" EXHAUST AIR DUCT UP TO A CAP ON ROOF.
- ⑥ 8" EXHAUST AIR WALL CAP.
- ⑦ 8" OUTSIDE AIR WALL CAP.
- ⑧ ROUTE CONDENSATE OUTSIDE WITH REFRIGERANT PIPE. ROUTE PIPE TO 8-INCHES AFF. PROVIDE 45-DEGREE ELBOW AT DISCHARGE TO GUIDE CONDENSATE AWAY FROM EXTERIOR WALL. PROVIDE SPLASH BLOCK AT DISCHARGE.
- ⑨ 20"x12" RECTANGULAR DUCTWORK OR 18" SPIRAL ROUND DUCTWORK.
- ⑩ 20"x16" RETURN AIR DUCT.
- ⑪ PROVIDE MANUFACTURER'S FACE OPERATED DAMPER.
- ⑫ 8" OUTSIDE AIR DUCT UP TO GV-1 ON ROOF.
- ⑬ 10" OUTSIDE AIR WALL CAP.
- ⑭ 6"x6" RECTANGULAR OR 6" ROUND SPIRAL DUCTWORK. TRANSITION TO RECTANGULAR AT DIFFUSER NECK.
- ⑮ 8"x6" RECTANGULAR OR 8" ROUND SPIRAL DUCTWORK. TRANSITION TO RECTANGULAR AT DIFFUSER NECK.
- ⑯ 10"x8" RECTANGULAR OR 10" ROUND SPIRAL DUCTWORK. TRANSITION TO RECTANGULAR AT DIFFUSER NECK.
- ⑰ BOTTOM OF GRILL AT TOP OF A DOOR.
- ⑱ ROUTE REFRIGERANT PIPES TO RESPECTIVE AIR-HANDLING UNIT LOCATED INSIDE BUILDING. ROUTE AND SIZE PER MANUFACTURER'S INSTRUCTIONS. TYPICAL FOR ALL HEAT PUMP CONDENSING UNITS.
- ⑲ GRILL LOCATED AT PLENUM.
- ⑳ ALL VISIBLE DUCTWORK AND GRILL SHALL BE PAINTED PER OWNER/CONTRACTOR INSTRUCTIONS. TYPICAL FOR ALL DUCTWORK THROUGH OUT THIS SIDE OF BUILDING.

ALPHA BLDG SET 08-27-2024

PHASE 1



Client: **SUNBELT BUILDERS**
10041 HWY 8 COVINGTON GA 0014 1770798 0 1 770798 048

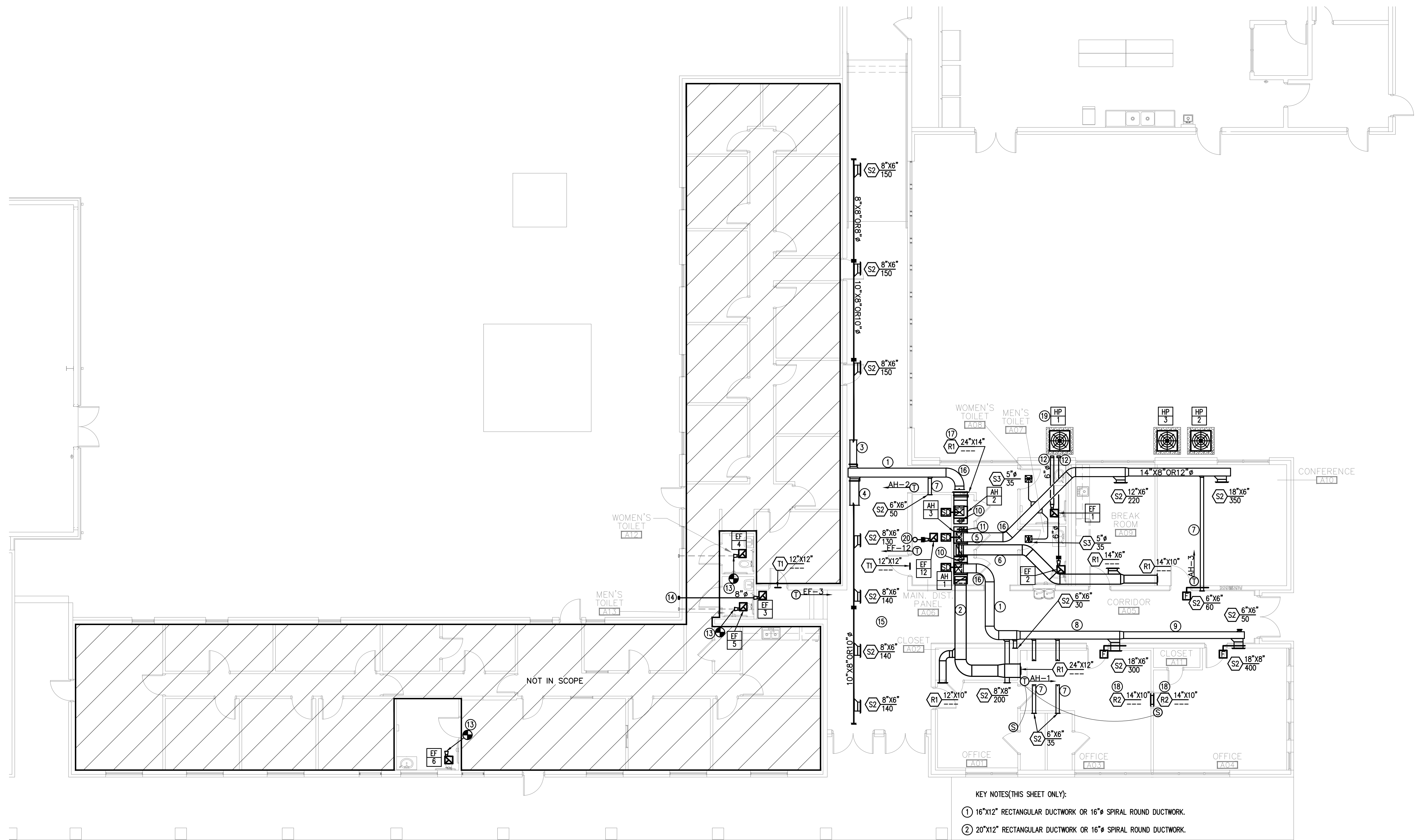
Project: **R. L. COUSINS COMMUNITY CENTER
NEWTON CO. BOC RFP #24-04**
8134 GEIGER STREET, N.W.
COVINGTON, GEORGIA

Issue	Date	Initiated	Drawg.	Revision	Description

Project No.:
Drwg. Date: 04/15/24
Drwg. Revision:
Drawn By: JWK & KMP
Checked By: KMP
File Name:

Sheet Title:
ENLARGED MECHANICAL PLAN

Sheet No.:
M-2.1

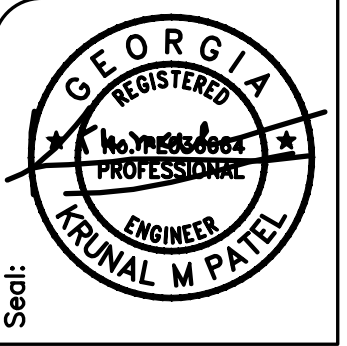


1 ENLARGED MEC ANICAL PLAN
SCALE: 1/8"=1'-0"

- KEY NOTES (THIS SHEET ONLY):
- ① 16"x12" RECTANGULAR DUCTWORK OR 16" SPIRAL ROUND DUCTWORK.
 - ② 20"x12" RECTANGULAR DUCTWORK OR 16" SPIRAL ROUND DUCTWORK.
 - ③ 14"x8" RECTANGULAR DUCTWORK OR 12" SPIRAL ROUND DUCTWORK. SET MVD AT 450 CFM.
 - ④ 16"x8" RECTANGULAR DUCTWORK OR 14" SPIRAL ROUND DUCTWORK. SET MVD AT 550 CFM.
 - ⑤ 16"x10" RECTANGULAR DUCTWORK OR 14" SPIRAL ROUND DUCTWORK.
 - ⑥ 18"x10" RECTANGULAR DUCTWORK OR 14" SPIRAL ROUND DUCTWORK.
 - ⑦ 6"x6" RECTANGULAR OR 6" ROUND SPIRAL DUCTWORK. TRANSITION TO RECTANGULAR AT DIFFUSER NECK.
 - ⑧ 14"x12" RECTANGULAR DUCTWORK OR 14" SPIRAL ROUND DUCTWORK.
 - ⑨ 12"x10" RECTANGULAR DUCTWORK OR 12" SPIRAL ROUND DUCTWORK.
 - ⑩ 7" OUTSIDE AIR DUCT UP TO 7" OUTSIDE AIR CAP ON ROOF.
 - ⑪ 6" OUTSIDE AIR DUCT UP TO 6" OUTSIDE AIR CAP ON ROOF.
 - ⑫ 6" EXHAUST AIR WALL CAP.
 - ⑬ REMOVE EXISTING EXHAUST FAN. INSTALL NEW EXHAUST FAN. CONNECT NEW EXHAUST FAN TO EXISTING DUCTWORK. CONTRACTOR SHALL PROVIDE NEW 6" DUCTWORK AND A 6" WALL CAP TO OUTSIDE AT THE BACK OF THE BUILDING IN CASE EXISTING EXHAUST FAN IS EXHAUST FAN IS EXHAUSTING AIR INTO ATTIC.
 - ⑭ 8" EXHAUST AIR WALL CAP.
 - ⑮ ALL DUCTWORK SHALL BE HARD SHEET METAL TO AVOID FIRE DAMPER PER FIRE DAMPER EXEMPTION DETAIL PROVIDED. ALL VISIBLE DUCTWORK AND GRILL SHALL BE PAINTED PER OWNER/CONTRACTOR INSTRUCTIONS. TYPICAL FOR ALL DUCTWORK THROUGH OUT THIS SIDE OF BUILDING.
 - ⑯ FIRST 90-DEGREE SUPPLY AIR DUCTWORK ELBOW OUT OF AIR-HANDLING UNIT SHALL BE INTERNALLY LINED ELBOW.
 - ⑰ PROVIDE MANUFACTURER'S FACE OPERATED MANUAL VOLUME DAMPER.
 - ⑱ BOTTOM OF GRILL AT TOP OF DOOR.
 - ⑲ ROUTE REFRIGERANT PIPES TO RESPECTIVE AIR-HANDLING UNIT LOCATED INSIDE BUILDING. ROUTE AND SIZE PER MANUFACTURER'S INSTRUCTIONS. TYPICAL FOR ALL HEAT PUMP CONDENSING UNITS.
 - ⑳ EXHAUST AIR DUCT UP TO 8" CAP ON ROOF.

ALPHA BLDG SET 08-27-2024

PHASE 1



TOTAL ENGINEERS
169 New Street, Macon, GA 31201
(478) 741-4632 - T.E. project # 23-101
www.totalengineers.com

Client: **SUNBELT BUILDERS**
10841 HWY 8 COVINGTON GA 0014 1770788 0 1 770788 046

Project: **R. L. COUSINS COMMUNITY CENTER**
NEWTON CO. BOC RFP #24-04
8134 GEIGER STREET, N.W.
COVINGTON, GEORGIA

Issue	Date	Initiated	Drawn	Revision	Description

Project No.:
Dwg. Date: 04/15/24
Dwg. Revision:
Drawn By: JWK & KMP
Checked By: KMP
File Name:

Sheet Title:
ENLARGED MECHANICAL PLAN

Sheet No.:
M-2.2

