



10641 Highway 36  
Covington, GA  
30014

[www.sunbeltbuilders.com](http://www.sunbeltbuilders.com)

t 770.786.3031  
f 770.786.3046

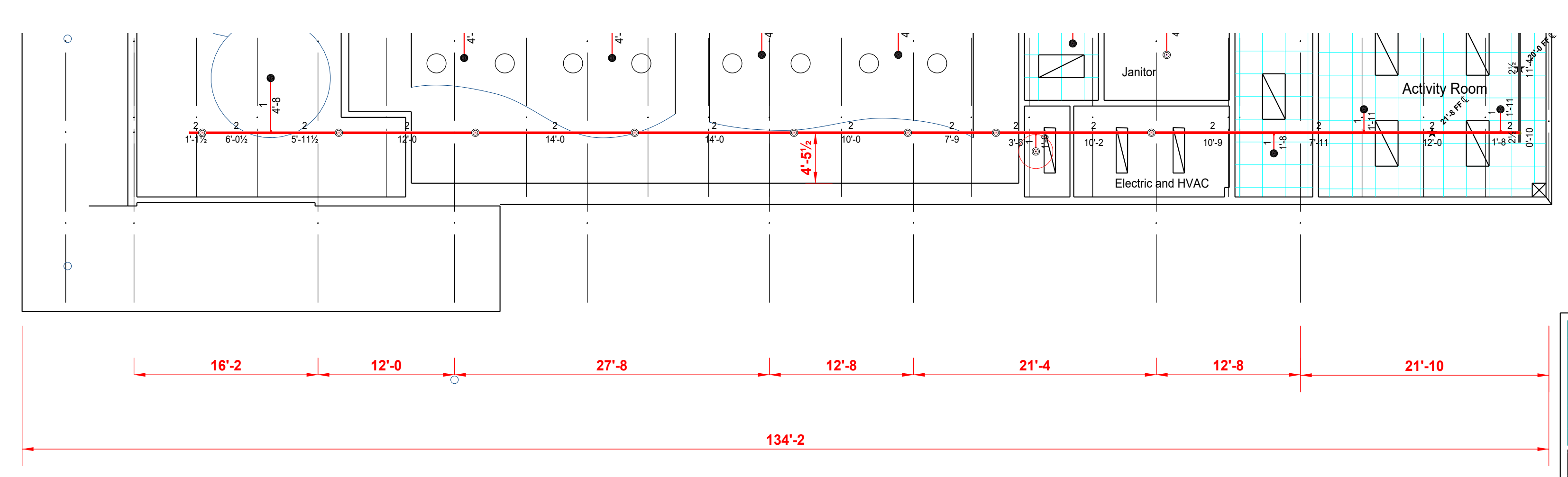
## Newton County – R.L. Cousins Center

FireAway  
636 Moore Street  
Oxford, GA 30054  
ph: 770-918-0527  
Paul Green, Jr.  
[paul@atlantafiresprinklers.com](mailto:paul@atlantafiresprinklers.com)

21-1313 Sprinkler As-built

REVISIONS:

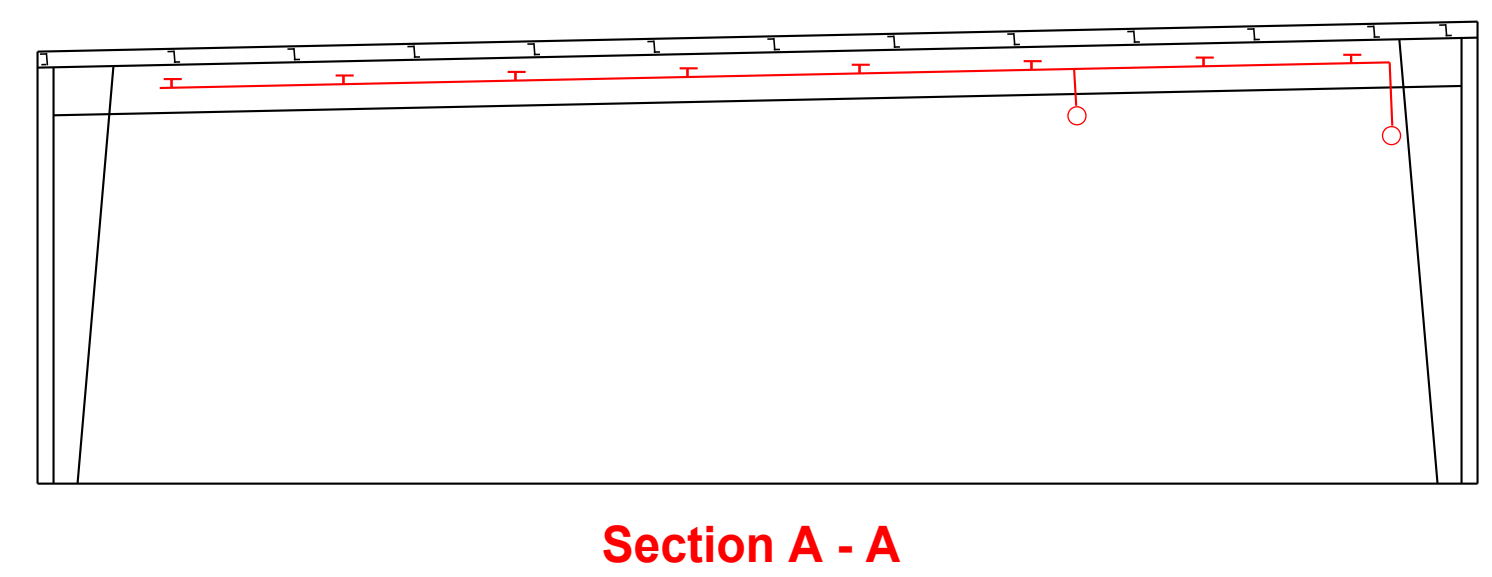
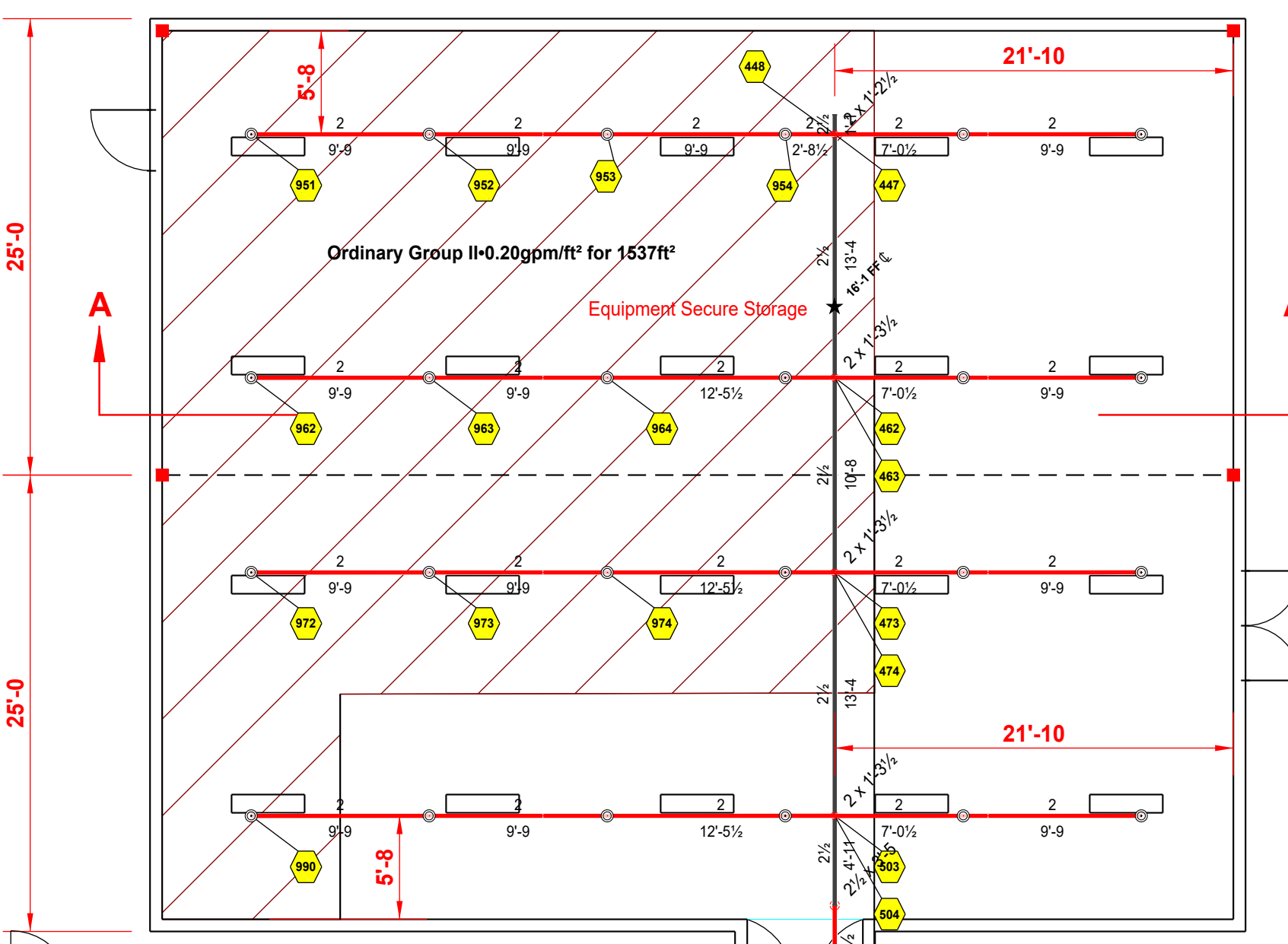
1	
2	
3	



**Hydraulic Information**

Remote Area 8

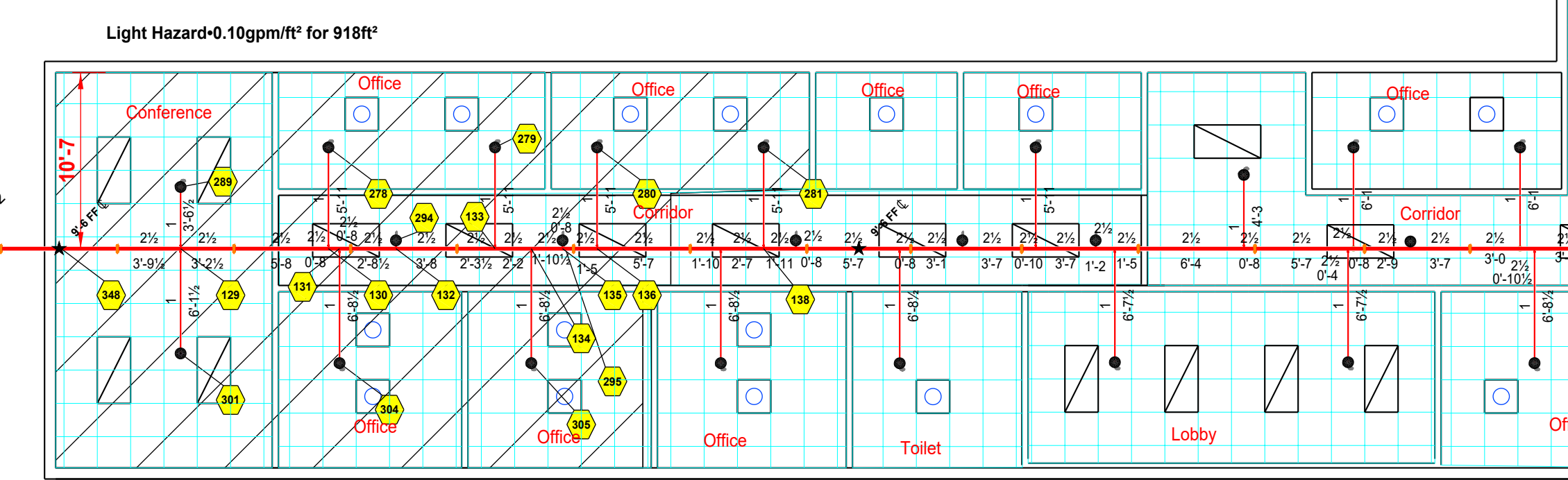
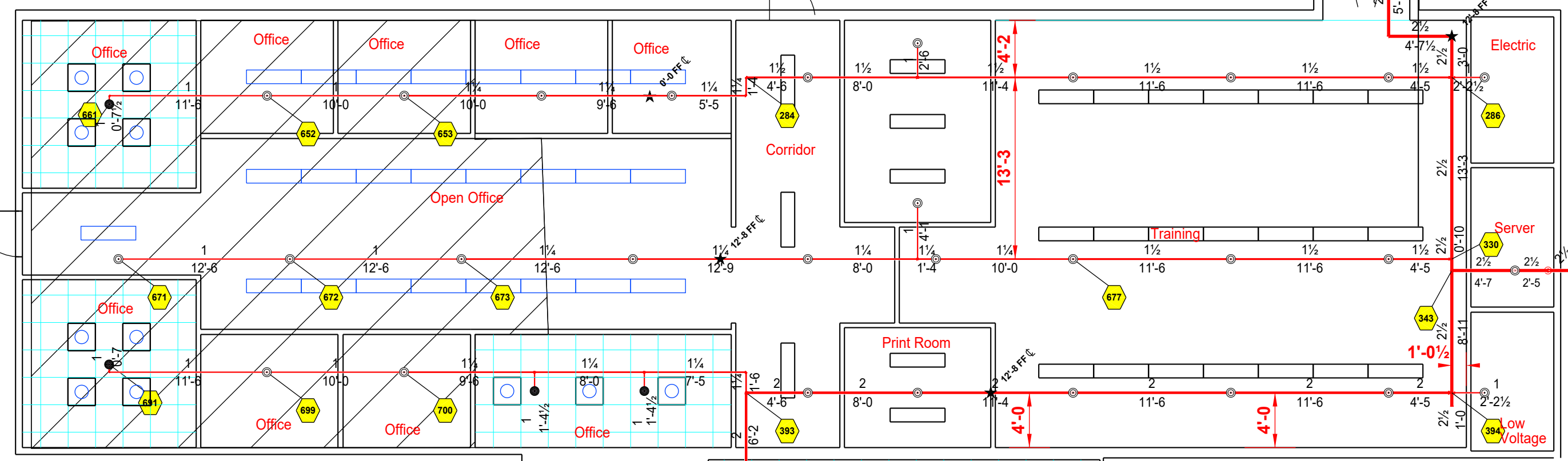
OCCUPANCY CLASSIFICATION	Ordinary Group II
DENSITY (gpm/ft <sup>2</sup> )	0.20 for 1500ft <sup>2</sup> (Actual 1537ft <sup>2</sup> )
TOTAL HOSE STREAMS	0.00
DRY CAPACITY	0.00gal
TOTAL HEADS FLOWING	11
K-FACTOR	5.6
TOTAL WATER REQUIRED	241.00
TOTAL PRESSURE REQUIRED	69.472
BASE OF RISER (gpm)	0.00
BASE OF RISER (psi)	0.000
SAFETY MARGIN (psi)	+16.860 (19.5%)



**Hydraulic Information**

Remote Area 2

OCCUPANCY CLASSIFICATION	Light Hazard
DENSITY (gpm/ft <sup>2</sup> )	0.10 for 1500ft <sup>2</sup> (Actual 1081ft <sup>2</sup> )
QUICK RESPONSE REDUCTION	13'-8 Ceiling (34.5%) 982ft <sup>2</sup>
TOTAL HOSE STREAMS	0.00
DRY CAPACITY	0.00gal
TOTAL HEADS FLOWING	9
K-FACTOR	5.6
TOTAL WATER REQUIRED	155.31
TOTAL PRESSURE REQUIRED	46.126
BASE OF RISER (gpm)	0.00
BASE OF RISER (psi)	0.000
SAFETY MARGIN (psi)	+40.578 (46.8%)



**Hydraulic Information**

Remote Area 1

OCCUPANCY CLASSIFICATION	Light Hazard
DENSITY (gpm/ft <sup>2</sup> )	0.10 for 1500ft <sup>2</sup> (Actual 918ft <sup>2</sup> )
QUICK RESPONSE REDUCTION	8'-0 Ceiling (40.0%) 900ft <sup>2</sup>
TOTAL HOSE STREAMS	100.00
DRY CAPACITY	0.00gal
TOTAL HEADS FLOWING	10
K-FACTOR	5.6
TOTAL WATER REQUIRED	253.42
TOTAL PRESSURE REQUIRED	24.782
BASE OF RISER (gpm)	0.000
BASE OF RISER (psi)	0.000
SAFETY MARGIN (psi)	+61.485 (71.3%)

**FIRE SPRINKLER SYSTEM**

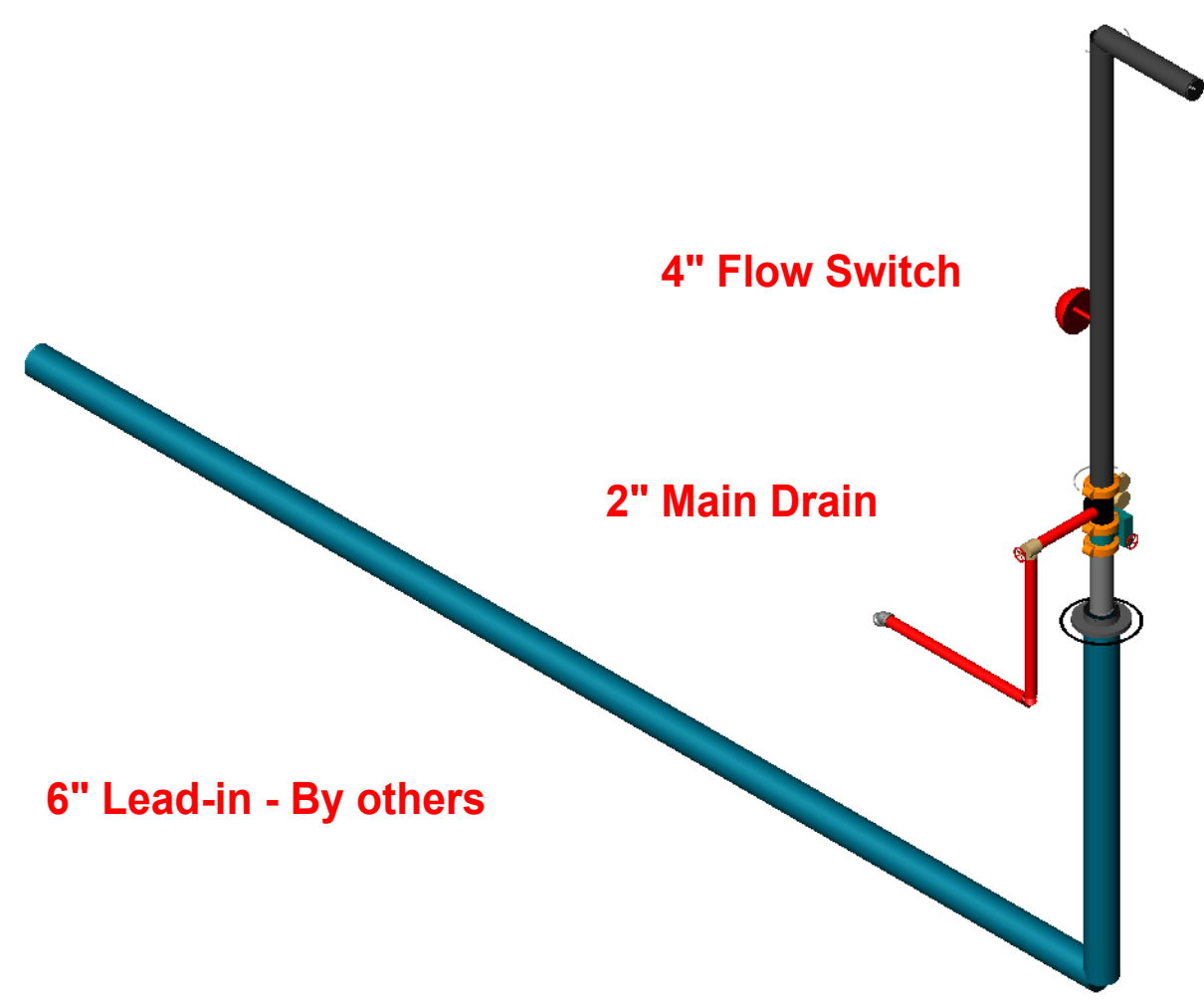
GRAPHIC SCALE  
 1/8" = 1'-0"

**38,930 Square Feet**

UNDERGROUND PIPING SHOWN FOR PLAN REVIEW.  
 ALL OF THE EXTERIOR WORK IS BY OTHERS

**Sprinkler Legend**

Symbol	Manufacturer	SIN	Model	Quantity	K-Factor	Type	Size	Response	Finish	Temperature	Note
●	Victaulic	V2708	FL-QR	229	5.6	Pendent	1/2"	Quick	Chrome	175°F	
●	Victaulic	V2704	FL-QR	169	5.6	Upright	1/2"	Quick	Brass	175°F	
●	Generic			4	5.6	Pendent	1/2"	Quick	Chrome	155°F	
●	Generic			4	5.6	Upright	1/2"	Quick	Chrome	155°F	
				<b>Total = 406</b>							

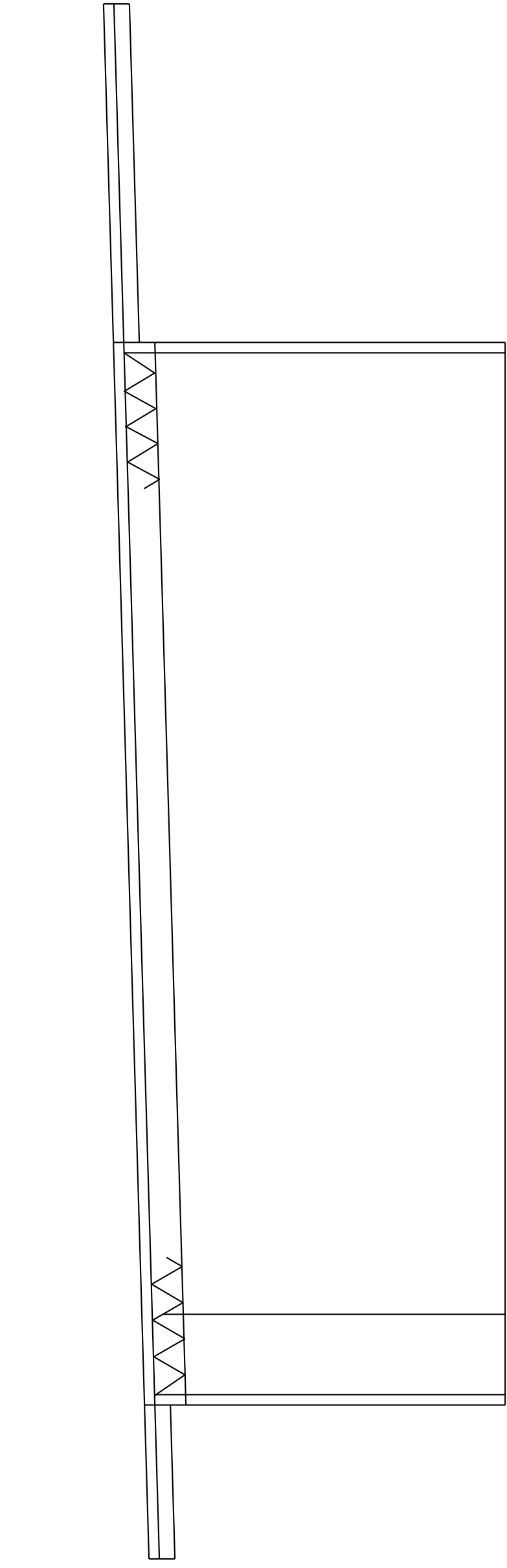


**SPRINKLER RISER**

**FLOW TEST BY CITY**

Date	= 5/8/2024
Hyd 58	
Static	= 87 psi
Flow	= 1342 gpm
Pilot	= 64 psi
Residual	= 71 psi



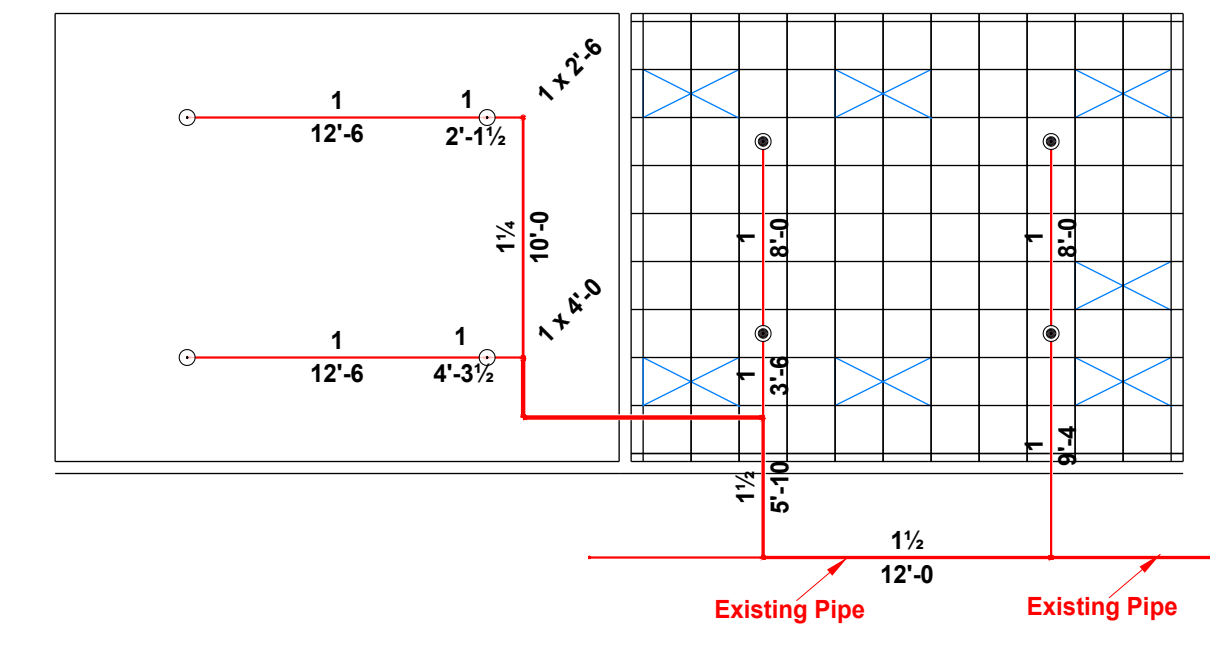
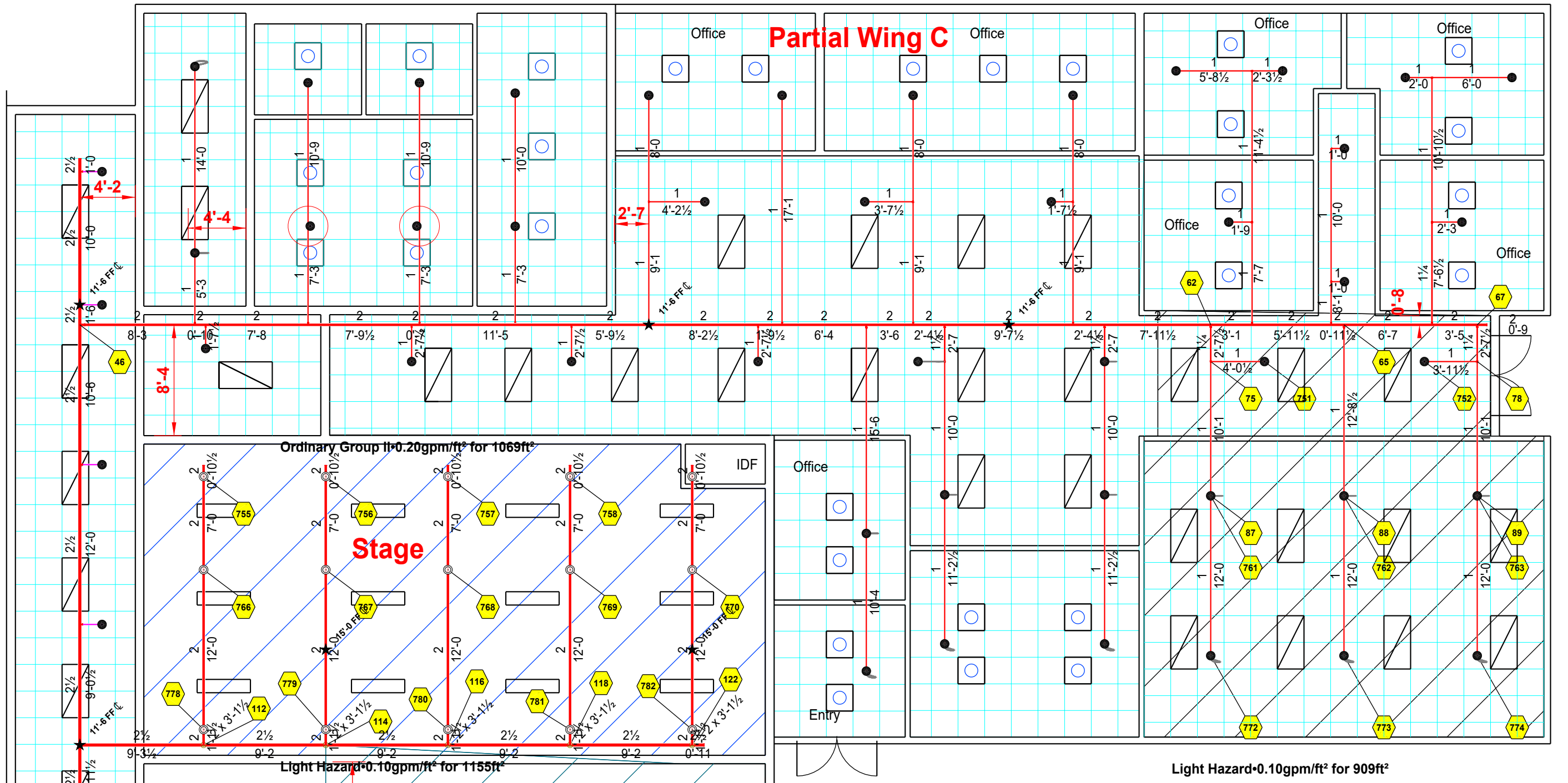
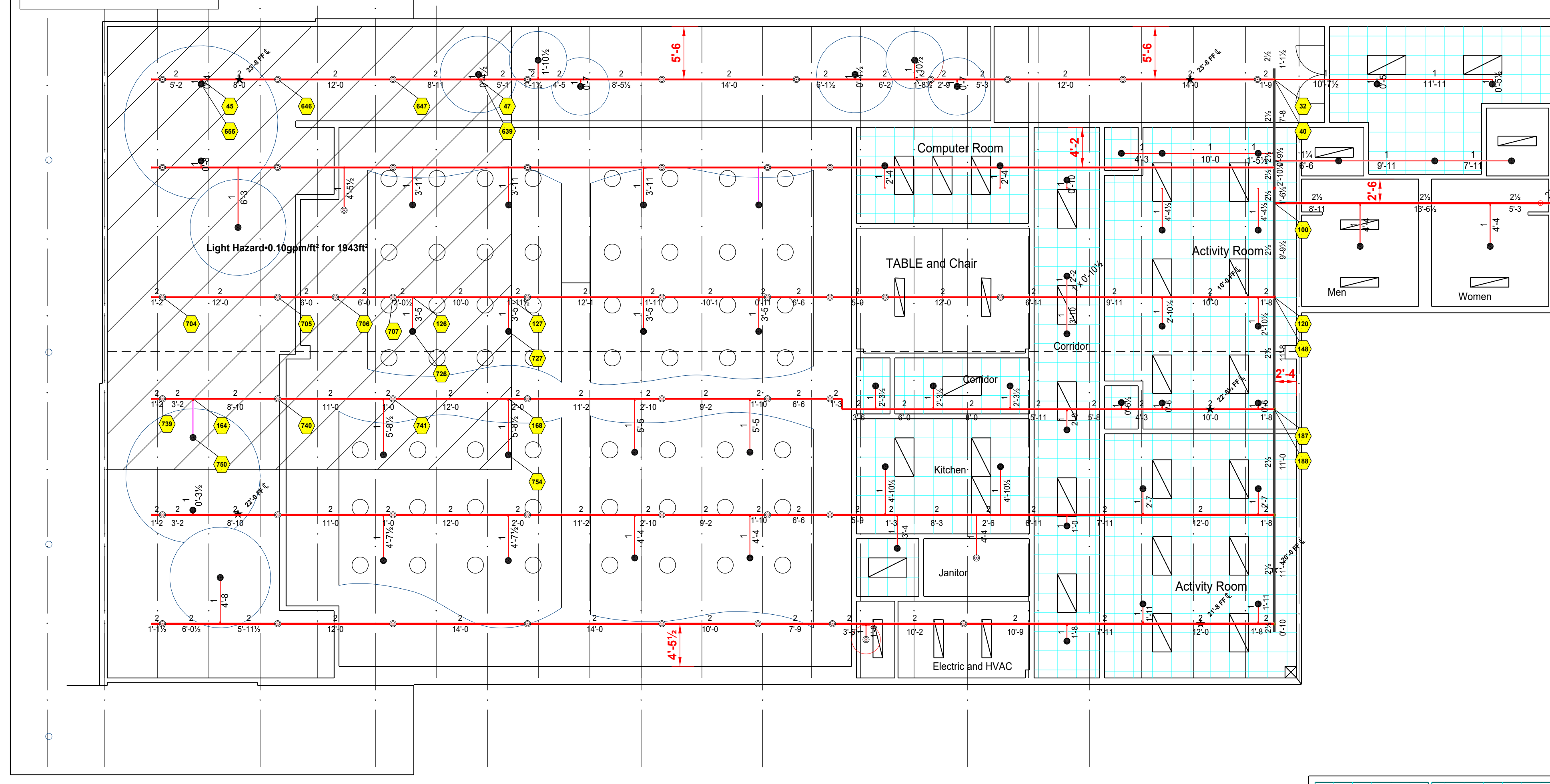


Hydraulic Information	
Remote Area 4	
OCCUPANCY CLASSIFICATION	Light Hazard
DENSITY (gpm/ft <sup>2</sup> )	0.10 for 1500ft <sup>2</sup> (Actual 909ft <sup>2</sup> )
QUICK RESPONSE REDUCTION	15'-0" Ceiling (40.0%) 900ft <sup>2</sup>
TOTAL HOSE STREAMS	100.00
DRY CAPACITY	0.00gal
TOTAL HEADS FLOWING	8
K-FACTOR	5.6
TOTAL WATER REQUIRED	229.53
TOTAL PRESSURE REQUIRED	42.023
BASE OF RISER (gpm)	229.53
BASE OF RISER (psi)	42.023
SAFETY MARGIN (psi)	+44.367 (51.4%)

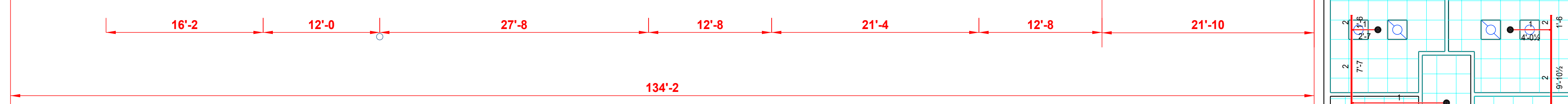
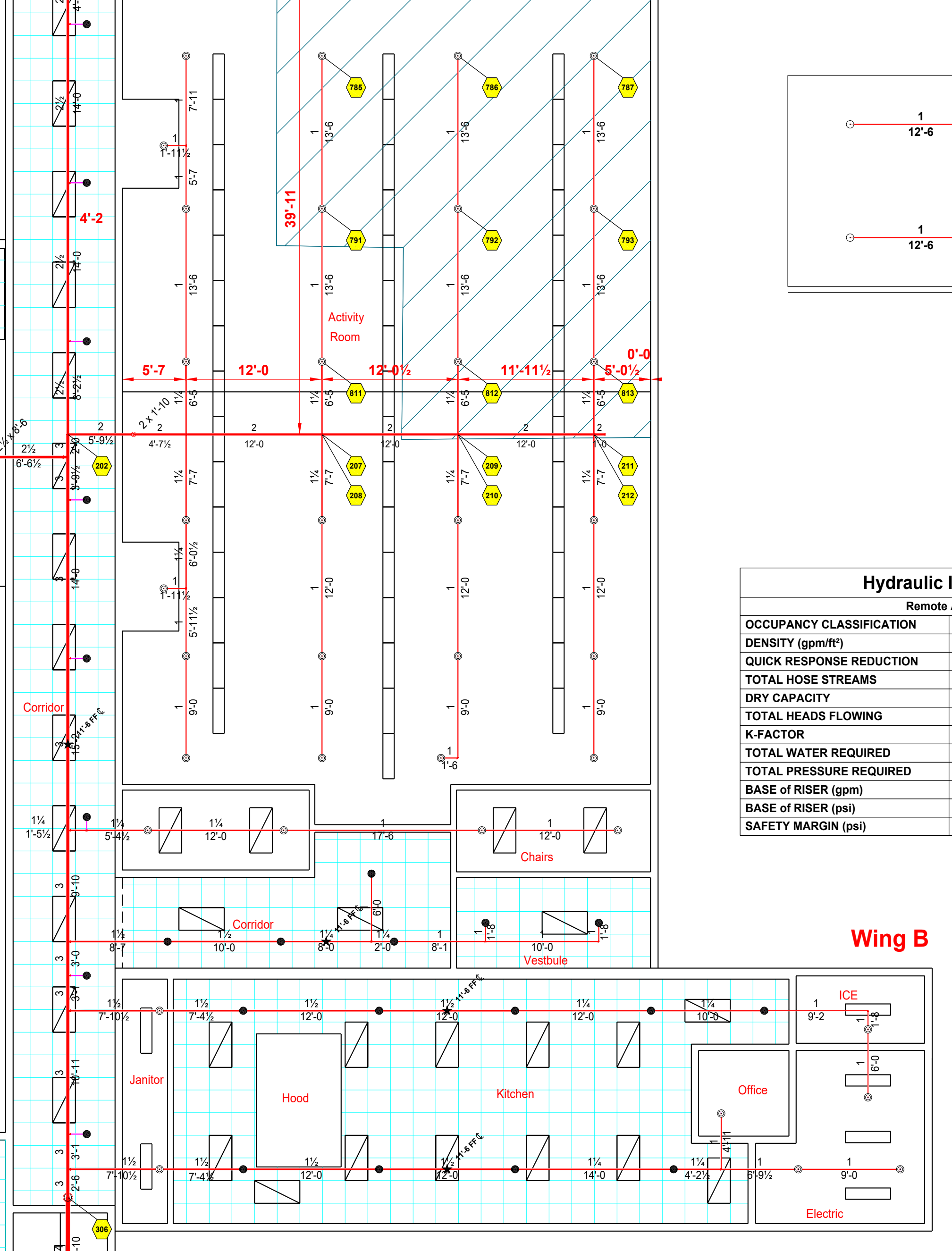
Hydraulic Information	
Remote Area 6	
OCCUPANCY CLASSIFICATION	Ordinary Group II
DENSITY (gpm/ft <sup>2</sup> )	0.20 for 1500ft <sup>2</sup> (Actual 1069ft <sup>2</sup> )
QUICK RESPONSE REDUCTION	15'-0" Ceiling (32.5%) 1012ft <sup>2</sup>
TOTAL HOSE STREAMS	0.00
DRY CAPACITY	0.00gal
TOTAL HEADS FLOWING	14
K-FACTOR	5.6
TOTAL WATER REQUIRED	317.19
TOTAL PRESSURE REQUIRED	60.411
BASE OF RISER (gpm)	0.00
BASE OF RISER (psi)	0.000
SAFETY MARGIN (psi)	+25.479 (29.7%)

Hydraulic Information	
Remote Area 5	
OCCUPANCY CLASSIFICATION	Light Hazard
DENSITY (gpm/ft <sup>2</sup> )	0.10 for 1500ft <sup>2</sup> (Actual 1943ft <sup>2</sup> )
TOTAL HOSE STREAMS	0.00
DRY CAPACITY	0.00gal
TOTAL HEADS FLOWING	15
K-FACTOR	5.6
TOTAL WATER REQUIRED	248.36
TOTAL PRESSURE REQUIRED	54.343
BASE OF RISER (gpm)	0.00
BASE OF RISER (psi)	0.000
SAFETY MARGIN (psi)	+31.951 (37.0%)

PER NFPA 13, 2019 Edition - 9.2.3.3, These outside overhangs do not require Sprinklers.



Hydraulic Information	
Remote Area 7	
OCCUPANCY CLASSIFICATION	Light Hazard
DENSITY (gpm/ft <sup>2</sup> )	0.10 for 1500ft <sup>2</sup> (Actual 1155ft <sup>2</sup> )
QUICK RESPONSE REDUCTION	15'-0" Ceiling (32.5%) 1012ft <sup>2</sup>
TOTAL HOSE STREAMS	100.00
DRY CAPACITY	0.00gal
TOTAL HEADS FLOWING	8
K-FACTOR	5.6
TOTAL WATER REQUIRED	236.30
TOTAL PRESSURE REQUIRED	42.435
BASE OF RISER (gpm)	236.30
BASE OF RISER (psi)	42.435
SAFETY MARGIN (psi)	+43.921 (50.9%)



**FIRE AWAY, LLC.**

636 Moore St., Oxford, Georgia 30054  
770-918-0527 - Designer Email - paul@firetronicsllc.com

**RL Cousins Sprinkler System**  
8131 Geiger St.  
Covington, GA

**FIRE SPRINKLER PLAN, NOTES, & DETAILS**

DRAWN BY: **Paul Green**  
NICET IV - Water-Based Systems Layout  
DATE: **11/22/24**  
SHEET NO: **2**

Paul Brian Green