



10641 Highway 36  
Covington, GA  
30014

[www.sunbeltbuilders.com](http://www.sunbeltbuilders.com)

t 770.786.3031  
f 770.786.3046

# JACKSON COUNTY AIRPORT TERMINAL BUILDING

Sunbelt Builders, Inc.  
10641 Hwy. 36  
Covington, GA 30014  
ph: 770-786-3031  
Mike McCrorey  
[mmccrorey@sunbeltbuilders.com](mailto:mmccrorey@sunbeltbuilders.com)

Architectural As-built

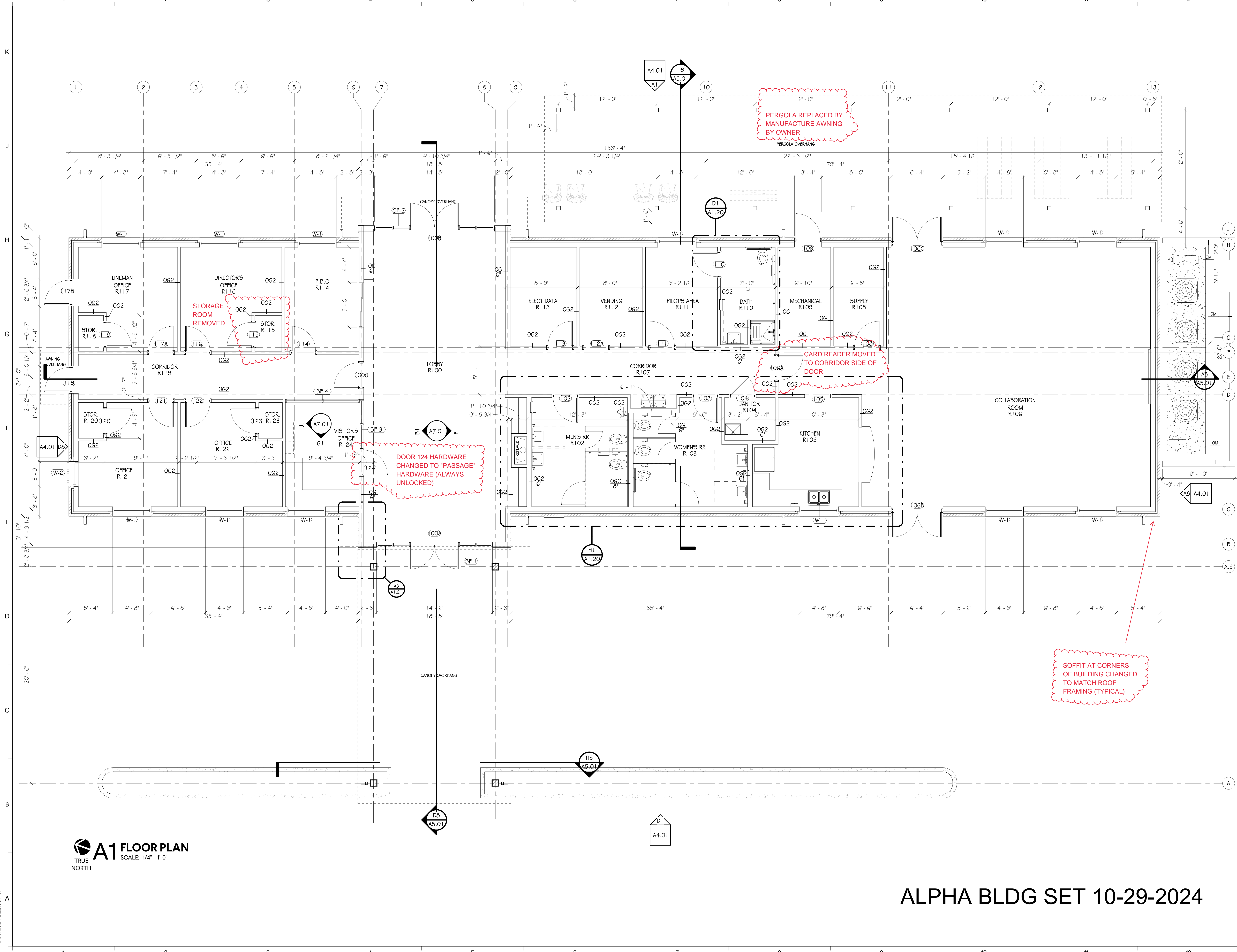
BETTER BY DESIGN



1/30/2024 8:23:08 AM TEMPLATE VERSION: 2023.1

**A1 FLOOR PLAN**  
TRUE NORTH  
SCALE: 1/4"=1'-0"

**ALPHA BLDG SET 10-29-2024**



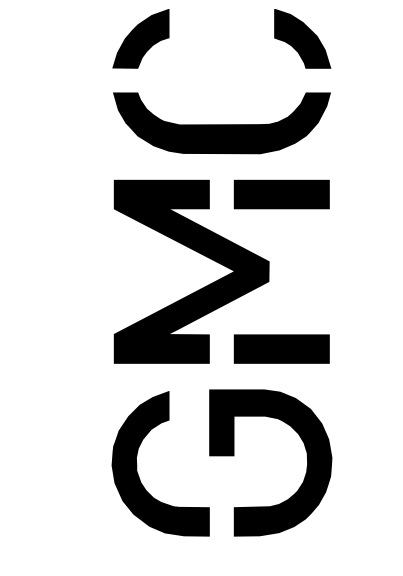
FLOOR PLAN

JACKSON COUNTY AIRPORT - TERMINAL AREA DEVELOPMENT  
500 Sky Harbor Way, Jefferson, GA

ISSUE DATE

CONSTRUCTION DOCUMENTS 1/29/24

Goodwyn Mills Cawood, LLC  
6120 Powers Ferry Road NW, Suite 200  
Atlanta, GA 30339  
T 770.952.2481  
GMCNETWORK.COM



**A1.01**

GMC # AATL230012

DRAWN BY: KP  
CHECKED BY: MN

1/30/2024 8:23:13 AM TEMPLATE VERSION: 2023.1



# A1 REFLECTED CEILING PLAN - LEVEL 1

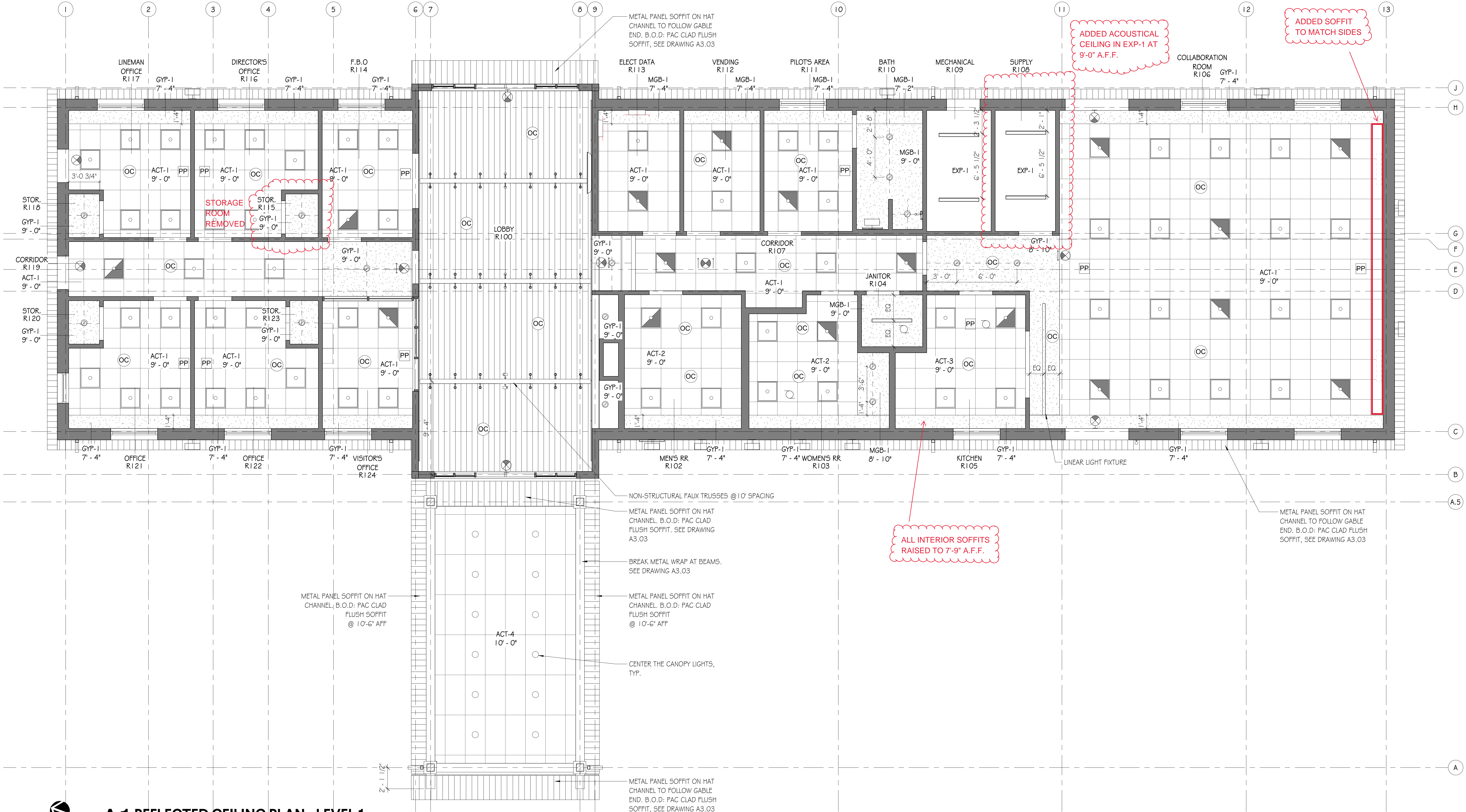
SCALE: 1/4" = 1'-0"

CEILING FINISH LEGEND		
NUMBER	TYPE	DETAIL DESCRIPTION
ACT-1	ACOUSTICAL CEILING TILE SYSTEM	MANUFACTURER: ARMSTRONG STYLE: CALLA HEALTH ZONE AFRASSURE COLOR: WHITE SIZE: 24" X 24" X THK' SUSPENSION SYSTEM: SQUARE TEGULAR 9/16"
ACT-2	ACOUSTICAL CEILING TILE SYSTEM	MANUFACTURER: ARMSTRONG STYLE: CALLA COLOR: WHITE SIZE: 24" X 24" X THK' SUSPENSION SYSTEM: SQUARE TEGULAR 9/16"
ACT-3	ACOUSTICAL CEILING TILE SYSTEM	MANUFACTURER: ARMSTRONG STYLE: KITCHEN ZONE COLOR: WHITE SIZE: 24" X 24" X THK' SUSPENSION SYSTEM: SQUARE LAY-IN 15/16"
ACT-4	ACOUSTICAL CEILING TILE SYSTEM	MANUFACTURER: ARMSTRONG STYLE: METALWORKS TORSION SPRING M1 COLOR: TBD SIZE: 2' X 4' SUSPENSION SYSTEM: SQUARE 15/16"
GYP-1	GYP BOARD CEILING	PAINTED GYP BOARD CEILING COLOR: PNT-3 (U.N.O. ON RCP)
MGB-1	MOISTURE RESISTANT GYP BOARD CEILING	PAINTED GYP BOARD CEILING - MOISTURE RESISTANT COLOR: PNT-3 (U.N.O. ON RCP)
EXP-1	EXPOSED TO STRUCTURE	EXPOSED TO STRUCTURE - WITH NO FINISH

- ### GENERAL NOTES - REFLECTED CEILING PLAN
1. CEILING HEIGHTS SHALL BE AS NOTED ON REFLECTED CEILING PLANS.
  2. WHEREVER POSSIBLE NO CEILING TILE SHOULD BE LESS THAN 6" IN ANY DIRECTION.
  3. SEE ELECTRICAL FOR ALL LIGHT FIXTURE TYPES AND SIZES.
  4. SEE MECHANICAL FOR ALL DIFFUSER TYPES AND SIZES.
  5. SEE INTERIOR ELEVATIONS FOR WALL MOUNTED LIGHT FIXTURE HEIGHT AND LOCATIONS.
  6. COORDINATE LOCATIONS OF ALL LIGHTS, DIFFUSERS, AND DEVICES BETWEEN THIS RCP AND MECHANICAL, FIRE PROTECTION, AND ELECTRICAL. NOTIFY ARCHITECT OF ANY DISCREPANCIES FOUND BEFORE PROCEEDING.
  7. WHERE EXIT SIGNS ARE LOCATED ABOVE DOORWAYS, CENTER FIXTURE OVER DOOR BUT MAINTAIN MINIMUM OVERHEAD CLEARANCE.
  8. ALL SPRINKLER HEADS IN ACOUSTIC CEILINGS SHALL BE CENTERED IN CEILING TILE.
  9. ALL BULKHEADS TO BE 4" BELOW ADJACENT ACT CEILING UNLESS NOTED OTHERWISE.

### REFLECTED CEILING PLAN LEGEND

	LAY-IN ACOUSTICAL CEILING SYSTEM - 2X2'		2X2 LAY-IN FIXTURE
	LAY-IN ACOUSTICAL CEILING SYSTEM - 2X4'		LINEAR SUSPENDED FIXTURE
	GYP BOARD - INTERIOR EIFS SOFFIT - EXTERIOR		LINEAR RECESSED FIXTURE
	EXPOSED STRUCTURE		CIRCULAR RECESSED FIXTURE
	SUPPLY DIFFUSER		EXIT LIGHT
	RETURN AIR GRILLE		
	EXHAUST FAN		



Goodwyn Mills Cawood, LLC  
6120 Powers Ferry Road NW, Suite 200  
Atlanta, GA 30339  
T 770.952.2481  
GMCNETWORK.COM

---

**JACKSON COUNTY AIRPORT - TERMINAL AREA DEVELOPMENT**  
500 Sky Harbor Way, Jefferson, GA

REFLECTED CEILING PLAN

ISSUE DATE: 1/29/24  
CONSTRUCTION DOCUMENTS

DRAWN BY: NLR  
CHECKED BY: MN

GMC # AATL230012

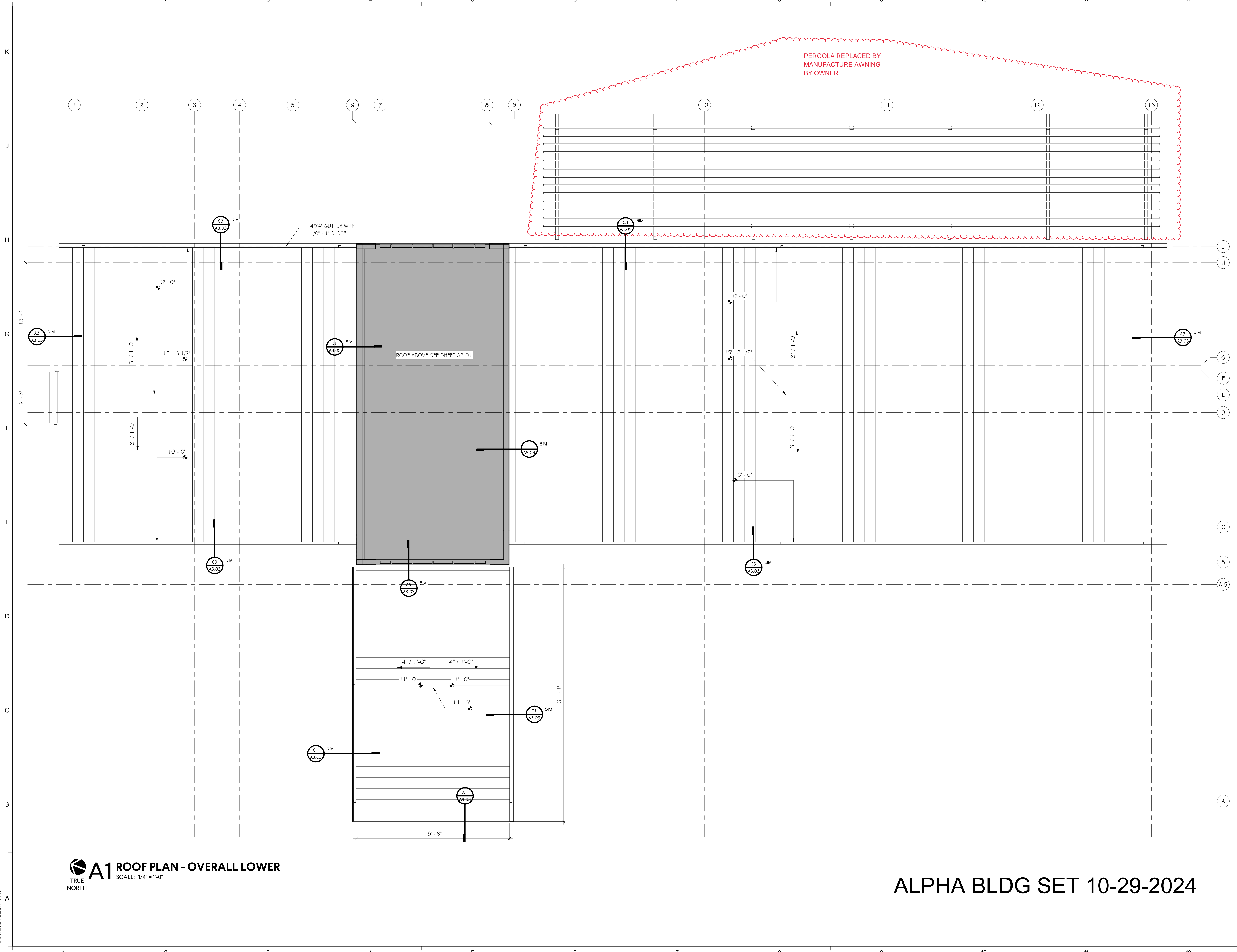
# A2.01

## ALPHA BLDG SET 10-29-2024

1/30/2024 8:23:14 AM TEMPLATE VERSION: 2023.1

**A1** ROOF PLAN - OVERALL LOWER  
TRUE NORTH SCALE: 1/4" = 1'-0"

ALPHA BLDG SET 10-29-2024



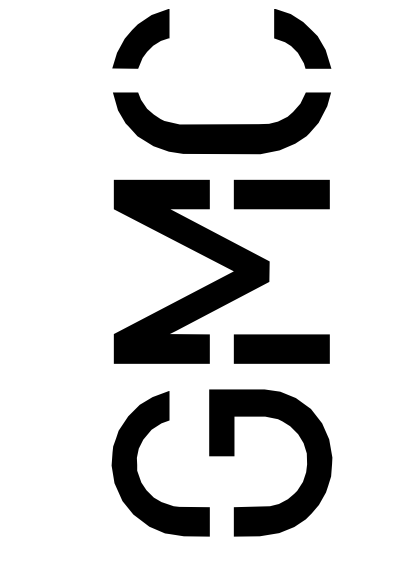
LOWER ROOF PLAN

JACKSON COUNTY AIRPORT - TERMINAL AREA DEVELOPMENT  
500 Sky Harbor Way, Jefferson, GA

ISSUE DATE

CONSTRUCTION DOCUMENTS 1/29/24

Goodwyn Mills Cawood, LLC  
6120 Powers Ferry Road NW, Suite 200  
Atlanta, GA 30339  
T 770.952.2481  
GMCNETWORK.COM



A3.02

GMC # AATL230012

DRAWN BY: KP  
CHECKED BY: MN











1/30/2024 8:23:24 AM TEMPLATE VERSION: 2023.1

**1 FINISH PLAN - LEVEL 1**  
SCALE: 1/4" = 1'-0"

**ALPHA BLDG SET 10-29-2024**

FINISH PLAN

JACKSON COUNTY AIRPORT - TERMINAL AREA DEVELOPMENT  
500 Sky Harbor Way, Jefferson, GA

GMC # AATL230012

**A8.02**

ISSUE DATE: 1/29/24  
CONSTRUCTION DOCUMENTS

ISSUE DATE: 1/29/24  
CONSTRUCTION DOCUMENTS

DRAWN BY: NR  
CHECKED BY: MN

DRAWN BY: NR  
CHECKED BY: MN

Goodwyn Mills Cawood, LLC  
6120 Powers Ferry Road NW, Suite 200  
Atlanta, GA 30339  
T 770.952.2481  
GMCNETWORK.COM

