



10641 Highway 36
Covington, GA
30014

www.sunbeltbuilders.com

t 770.786.3031
f 770.786.3046

CHAMBLEE PUBLIC WORKS

W.C.S.
9548 Tara Blvd.
Jonesboro, GA 30236
ph: 770-478-7781
Kenny Miles
kenny@wcsdiv10.com

10-2113 Toilet Partitions and Accessories O&M

METAL LOCKERS

Date Issued 01-17

INSPECTION & MAINTENANCE

- 1) Functionability of the lockers, check once a year:
 - a) Open and shut the locker. Check the ease of the process and note if there are any problems with the latch, door frame, hinge, and lock bar.
 - b) Check for any missing or broken parts. Are the hooks loose or is the coat rod bent
 - c) Inspect the locker for any dents, sharp edges or rivets popped out.

- 2) Grease the following once a quarter:
 - a) The lock bar located inside the door.
 - b) The door hinges. ("WD40" works well.)

- 3) Missing or broken parts:
 - a) Contact local dealer for your locker needs.
 - b) If you still need assistance, please contact ASI Storage Solutions.

LOCKER CARE

- 1) Preventive Care:
 - a) Anchor the lockers securely to the wall and/or floor to prevent them from falling over. This will damage the lockers and you will have to have them serviced or replaced.
 - b) Install the lockers in a well ventilated area. This will reduce the humidity in the lockers, which could be an excellent breed ground for mold and mildew.

- 2) Clean the lockers:
 - a) Dust and clean the lockers inside and out yearly.
 - b) Clean the lockers with a non abrasive, mild detergent. Rinse with warm water and dry the lockers thoroughly right away. Do not leave any moisture behind.



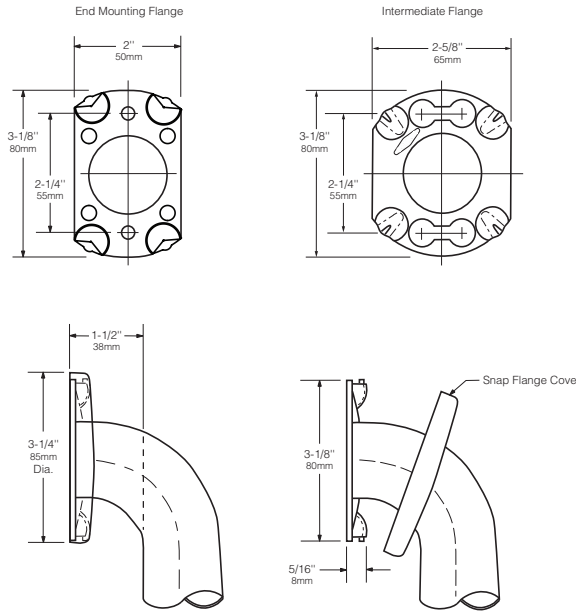
Technical Data

**1½" (38mm) DIAMETER
STAINLESS STEEL GRAB
BARS WITH SNAP FLANGE**

**B-6806
SERIES**

Specify Finish Required:

- Satin-finish, slip-resistant surface
- Peened surface; add suffix .99 to model number



| | | |
|---|--|---|
| | | |
| <p>HORIZONTAL</p> | <p>VERTICAL</p> | <p>TWO-WALL WHEELCHAIR COMPARTMENT</p> |
| <p>B-6806 x 12, 18, 24, 30, 36, 42, 48</p> | | <p>B-68137</p> |
| | | |
| <p>HORIZONTAL TUB / SHOWER COMPARTMENT BAR 24 x 36</p> | <p>HORIZONTAL TWO-WALL BAR for Shower Stall</p> | <p>TWO-WALL TOILET COMPARTMENT BAR 42 x 54</p> |
| <p>B-68616</p> | <p>B-6861</p> | <p>B-6897</p> |

continued . . .

MATERIALS:

Grab Bar — 18-8 S, type-304, 18-gauge (1.2mm) stainless steel tubing with satin-finish, slip-resistant surface. 1-1/2" (38mm) outside diameter. Ends are heliarc welded to flanges. Clearance between the grab bar and wall is 1-1/2" (38mm).

Concealed Mounting Flanges — 18-8 S, type-304, 11-gauge (3.2mm) thick, stainless steel plate; end flanges 2" x 3-1/8" (50 x 80mm) with holes for attachment to wall. Intermediate flanges 2-5/8" x 3-1/8" (65 x 80mm) wide x 3-1/8" (80mm) diameter.

Snap Flange Covers — 18-8 S, type-304, 22-gauge (0.8mm) drawn stainless steel with satin-finish. 3-1/4" (85mm) diameter x 1/2" (13mm) deep. Each cover snaps over mounting flange to conceal mounting screws.

STRENGTH:

Bobrick grab bars that provide 1-1/2" (38mm) clearance from wall can support loads in excess of 900 pounds (408kg) if properly installed. Other grab bar configurations can support loads in excess of 250 pounds (113kg) if properly installed, complying with accessible design (including ADAAG in the U.S.A.) for structural strength

Safety Warning: Grab bars are no stronger than the anchors and walls to which they are attached and, therefore, must be firmly secured in order to support the loads for which they are intended. To avoid potential injury, the building owner or maintenance personnel should remove the grab bar from service if the grab bar is not adequately secured to wall or if there is any observed damage to the welds.

INSTALLATION:

Provide concealed anchor device or backing as specified or required in accordance with local building codes before wall is finished. Fasten concealed mounting flanges to anchor device or backing with at least two screws opposing each other in each flange. Snap flange covers over each mounting flange to conceal mounting screws. Concealed anchor devices and mounting screws are not included with Bobrick grab bars and must be specified as an accessory.

For Grab Bars with an Intermediate Flange(s), Pull Snap-Flange Covers away from mounting flanges. Place grab bar in desired mounting location. Use intermediate flange as a template to mark location of mounting screws at intermediate flange only. Mark screw locations at the center of the slot in the middle of the double-keyhole shaped mounting holes (2) in the intermediate flange. Remove grab bar from wall. Drive the intermediate flange mounting screws into wall at marked locations. **Note:** Make sure to leave a space of just over 1/8" (3.17mm) between the underside of the screw head and the wall. Install grab bar on the wall by placing the round ends of the intermediate flange double-keyhole shaped mounting holes over the mounting screws (2) are located in the middle of the flange slots. Install the mounting screws into the wall at the end flanges and secure tightly. Tighten the mounting screws at the intermediate flange. Press all snap-flange covers into place to conceal mounting flanges.

Note: Recommend use of 1/4" or #14 sheet metal or wood screws to install Intermediate Flange. #12 screws may also be used.

Important Notes:

- Mounting Kits** — Bobrick offers a mounting kit for installing grab bars; **one Bobrick mounting kit is required for each flange.**

| Mounting Kit No. | Description |
|------------------|---|
| 252-30 | Consists of # (3) 14 x 2½" type-304 stainless steel, Phillips round-head, sheet-metal screws. |

- Grab Bar Fastener** — Bobrick offers a grab bar fastening system that secures all Bobrick grab bar series; **one Bobrick fastener is required for each flange.** Install grab bar without backing in wall requires minimum 5/8" (16mm) thick painted or tiled drywall.

| WingIt™ Fastener No. | Description |
|----------------------|--|
| 251-4 | Consists of 10–32 x 5/16" round-head, Phillips 18/8 stainless steel screws. (1) WingIt grab bar fastener. |

- Optional Anchor Device** — Bobrick grab bar anchor device includes stainless steel machine screws to be used for attaching grab bars to anchors. **one Bobrick concealed anchor device is required for each flange.**

| Optional Anchor No. | Description |
|---------------------|---|
| 2583 | Anchor for 3/4" to 1" (19-25mm) panel 1 anchor required for each flange. |
| 2586 | Anchor for 1/2" to 1" (13mm) panel 1 anchor required for each flange. |

SPECIFICATION:

Grab bar shall be type-304 stainless steel with satin-finish, slip-resistant surface. Grab bar shall have 18-gauge (1.2mm) wall thickness and 1-1/2" (38mm) outside diameter. Clearance between the grab bar and wall shall be 1-1/2" (38mm). Concealed mounting flanges shall be 11-gauge (3.2mm) thick stainless steel plate, 2" x 3-1/8" (50 x 80mm), and equipped with at least two screw holes for attachment to wall. Flange covers shall be 22 gauge (0.8mm), 3-1/4" (85mm) diameter x 1/2" (13mm) deep, and shall snap over mounting flange to conceal mounting screws and/or WingIt fasteners. Ends of grab bar shall pass through concealed mounting flanges and be heliarc welded to form one structural unit. Grab bar shall comply with accessible design (including ADAAG in the U.S.A.) for structural strength.

Grab Bar shall be Model _____ (insert model number) of Bobrick Washroom Equipment, Inc., Clifton Park, New York; Jackson, Tennessee; Los Angeles, California; Bobrick Washroom Equipment Company, Scarborough, Ontario; Bobrick Washroom Equipment Pty. Ltd., Australia; and Bobrick Washroom Equipment Limited, United Kingdom.

Advisory Bulletin



BUILDING VALUE SINCE 1906

TB-21 Stainless Steel Cleaning and Maintenance

Always: Wipe or polish with the grain direction of satin finishes.

Remove any cleaning or soap residue from stainless surface with water and wipe dry with clean cloth.

Caution: Avoid cleaning products containing bleach, hydrochloric acids and or chlorides . . . these are frequently found in toilet bowl or tile cleaners and in abrasive scrubbing powders.

Avoid use of steel wool which can leave behind fine particles that cause surface rust.

Avoid use of abrasive cleaners on bright polish stainless steel surfaces.

| CONDITION | CLEANING AGENT | METHOD OF APPLICATION |
|--|---|--|
| Dirt, smudges, and fingerprints | Use mild cleaning solution or stainless steel cleaners. | Apply cleaner. Wipe off soil using a cloth or sponge for smooth surfaces and a soft brush for textured surfaces. Rinse and dry. |
| Graffiti | Bobrick Graffiti Remover, part #891099 or equivalent. | Apply cleaner, rub spots with soft cloth or sponge. Rinse and dry. |
| Stubborn spots, atmospheric discoloration | Liquid or spray stainless steel polish. | As recommended by manufacturer. Rinse or dry. |
| Mineral deposit or scale from hard water | Bathroom cleaners containing phosphoric acid or acetic acids. | Apply liberally, allow to stand for a few minutes; scrub with coarse toweling or soft bristle brush in direction of grain. Rinse and dry. |
| "Rust" discoloration resulting from exposure to harsh environmental and or chemical conditions Note: Shower and other wet environments may need to be cleaned daily to minimize "rust" discoloration. | Appropriate cleaner listed above, plus 3M Scotch Brite pad #7447 or equivalent. | Clean surface as above, then rub stained area lightly with 3M Scotch Brite pad. Clean with stainless steel polish. Rinse and dry. Rub only with the grain direction of satin finishes. . . do not use on bright polish stainless steel. |

continued . . .

Special Note for Toilet Partition Hardware

Although stainless steel is very resistant to rust, there are certain conditions where this can happen depending on various factors listed below:

- Cleansers containing Chloride or Muriatic Acid (hydrochloric acid).
- Concentrated soap residue where chemical additives to soap may cause discoloration and potentially dry out and result in a rusting appearance.
- Environments where water has high iron content or where contact with iron occurs (such as steel wool, machining chips or iron residue or dust from installation or cleaning of other steel products) can leave a rusty residue.
- Presence of salt containing chlorides.

Remove rust discoloration or corrosion as soon as possible to prevent permanent discoloration and pitting of the surface. Regular cleaning can restore the original condition in most cases with proper maintenance and cleaning. DAILY cleaning should prevent discoloration (rusting and rusting appearance) and corrosion in high moisture environments such as showers and shower compartments.

Materials and Tools Required:

- Mid abrasive cleaner such as Bar Keepers Friend (available at Home Improvement or Discount Stores).
- Soft Sponge and/or 3M Scotch Brite pad #7447 or equivalent.

Follow the Steps Below During Daily Cleaning:

1. Apply a generous amount on the affected areas and rub with a damp sponge in the direction of the grain. NOTE: Avoid using caustic cleaners that contain chlorides as the abrasive nature of these products will further damage the steel's chromium film.
2. Rinse with clear water and gently towel dry.
3. Repeat cleaning process daily or more often depending on severity of rusting.

For Powder Coated (e.g., .MBLK) and PVD Stainless Steel Accessories:

1. Use a soft cloth to remove dust.
2. Use a highly diluted mild soap in a soft water-based solution applied to a soft cloth to gently clean. Then, rinse with soft water and dry with another soft towel.
3. For PVD stainless steel accessories, do not use any compounds containing silicone.



Technical Data

MIRROR WITH STAINLESS STEEL CHANNEL FRAME

B-165 SERIES

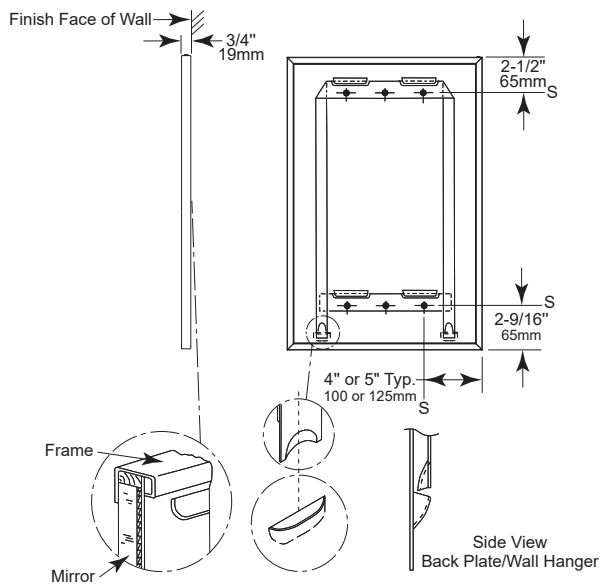


Designer's Notes:

1. Special-order sizes available on request.
2. Maximum size mirror available, 96" x 72" (244 x 183cm); minimum size, 12" x 12" (30 x 30cm).
3. All Bobrick framed mirrors are manufactured to overall width and height dimensions. EXAMPLE: A 24" x 36" (61 x 91cm) mirror will be furnished 24" x 36" (61 x 91cm) outside-of-frame to outside-of-frame.
4. To specify special sizes use Series Number followed by width x height in inches. EXAMPLE: B-165 2024 20" x 24" (51 x 61cm)
5. Bobrick framed mirrors are manufactured to a tolerance 1/8" (3.2mm).
6. For sufficient space to lift mirror onto wall hanger(s), provide 1" (25mm) minimum clearance above top of mirror frame.
7. Provide 1/2" (12.7mm) minimum clearance on each side.

Snap Locking Design (Rear View)

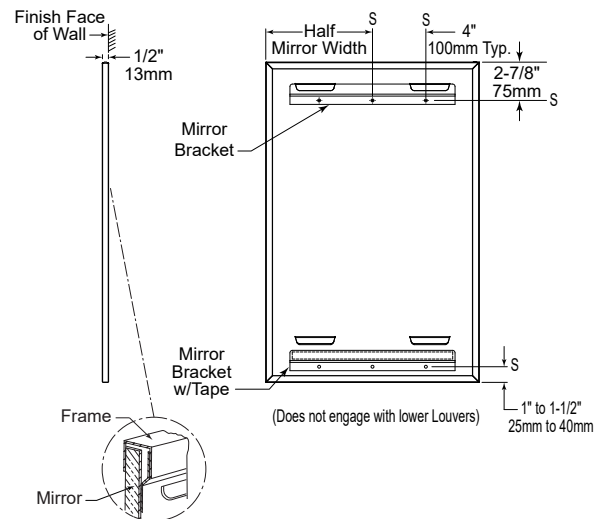
Figure: 1



"2S" Tab Design (Rear View)

- for all other mirrors up to a width of 36"

Figure: 2



STANDARD B-165 SERIES MIRRORS

| MODEL NO. | OVERALL SIZE | |
|------------|--------------|-------------|
| | W | H |
| B-165 1824 | 18" (46cm) | 24" (61cm) |
| B-165 1830 | 18" (46cm) | 30" (76cm) |
| B-165 1836 | 18" (46cm) | 36" (91cm) |
| B-165 2430 | 24" (61cm) | 30" (76cm) |
| B-165 2436 | 24" (61cm) | 36" (91cm) |
| B-165 2448 | 24" (61cm) | 48" (122cm) |
| B-165 2460 | 24" (61cm) | 60" (152cm) |

Note: Mirrors greater than 36" in width will have multiple hanger brackets with a typical 8" off each edge.

continued . . .

MATERIALS:

Frame — Type-430 stainless steel, 1/2" x 1/2" x 3/8" (13 x 13 x 9.5mm) channel with 1/4" (6mm) return at rear for Snap Locking Design; 1/2" x 1/2" x 1/2" (13 x 13 x 13mm) channel for Lock Tab Design, with bright polished finish. One piece frame with 90 degree mitered corners. Galvanized steel back has integral horizontal hanging brackets near the top for hanging the mirror and near the bottom to prevent the bottom of the mirror from pulling away from the wall.

Mirror — No. 1 quality, 1/4" (6mm) select float glass: selected for silvering, electrolytically copper-plated by the galvanic process, and guaranteed for 15 years against silver spoilage. Back is protected by full-size, shock-absorbing, water-resistant, nonabrasive, polyethylene padding.

Concealed Wall Hanger — For snap locking design: Heavy gauge steel construction. Incorporates upper and lower members, which engage backplate louvers to keep mirror against the wall. For "2S"-Tab design: Incorporates upper bracket engaging in upper louver and double sided tape below the bottom louver securing mirror to concealed wall hanger.

INSTALLATION:

Mount wall hanger on wall with screws (not furnished) at points indicated by an S. For plaster or dry wall construction, provide backing to comply with local building codes, then secure wall hanger with screws (not furnished). When providing a concealed backing, allow backing to cover minimum range of mounting hole locations shown on drawing. For other wall surfaces, provide fiber plugs or expansion shields for use with screws (not furnished), or provide 1/8" (3mm) toggle bolts or expansion bolts.

Snap Locking Design: Hang mirror on wall hanger with all four backplate louvers engaged behind horizontal wall hanger members. To do this, mirror must be centered in front of the wall hanger horizontally, pressed flat against the wall approximately 1" (25mm) above final position and then lowered into final position.

"2S" Tab Design: Comprises of two brackets, while the bottom one is furnished with double side tape. Bottom hanger bracket's mounting holes must be 1" - 1 1/2" above mirror's bottom edge. Note: Bottom hanger bracket is not supposed to engage with louvers of mirror's backplate. Hang mirror on wall top hanger bracket with the top two louvers engaged behind top wall hanger bracket. To do this, mirror must be centered in front of the wall hanger horizontally, pressed only at the top against the wall approx. 1" (25mm) above final position and then lowered into final position. When lowering, pull mirror's bottom edge off the wall by preventing bottom bracket from engaging. Once lowered, mirror must be pressed against wall to engage with double sided tape of lower wall hanger bracket.

Snap Locking Design — Locking devices automatically secure mirror to concealed wall hanger when it is lowered into final position (see figure 3). Locking devices may be unlocked by inserting two flat blade screwdrivers behind each side of mirror near the bottom or under the bottom of the mirror and pulling mirror bottom forward and then up.

"2S" Tab Design — Secure mirror to concealed wall hanger by pressing mirror against double sided tape of lower hanger once it is lowered into final position (see figure 4).

**Snap Locking Design
(Front View)**

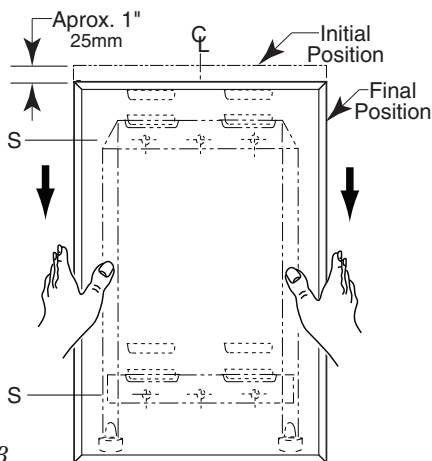


Figure: 3

**"2S"-Tab Design - up to 36" Width
(Front View)**

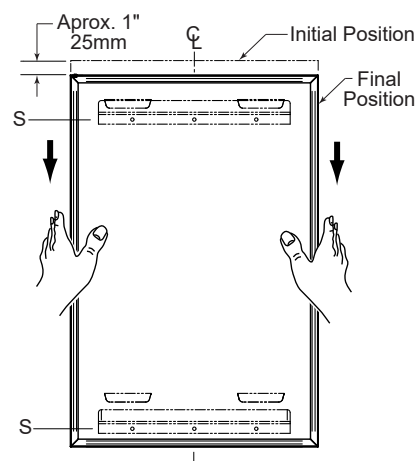


Figure: 4

SPECIFICATION:

Mirror shall have a one-piece type-430 stainless steel channel frame, with 90° mitered corners; all exposed surfaces shall have bright polished finish. Select float glass mirror shall be guaranteed for 15 years against silver spoilage. The back shall be protected by full-size, shock-absorbing, water-resistant, nonabrasive, polyethylene padding. Galvanized steel back shall have integral horizontal hanging brackets located at top and bottom for mounting on concealed wall hanger to prevent the mirror from pulling away from the wall. Locking devices secure mirror to concealed wall hanger. Mirror shall be removable from the wall.

Framed Mirror shall be Model B-165 _____ (insert width and height) of Bobrick Washroom Equipment, Inc., Clifton Park, New York; Jackson, Tennessee; Los Angeles, California; Bobrick Washroom Equipment Company, Scarborough, Ontario; Bobrick Washroom Equipment Pty. Ltd., Australia; and Bobrick Washroom Equipment Limited, United Kingdom.

Advisory Bulletin



BUILDING VALUE SINCE 1906

TB-21 Stainless Steel Cleaning and Maintenance

- Always:** Wipe or polish with the grain direction of satin finishes.
Remove any cleaning or soap residue from stainless surface with water and wipe dry with clean cloth.
- Caution:** Avoid cleaning products containing bleach, hydrochloric acids and or chlorides . . . these are frequently found in toilet bowl or tile cleaners and in abrasive scrubbing powders.
Avoid use of steel wool which can leave behind fine particles that cause surface rust.
Avoid use of abrasive cleaners on bright polish stainless steel surfaces.

| CONDITION | CLEANING AGENT | METHOD OF APPLICATION |
|--|---|--|
| Dirt, smudges, and fingerprints | Use mild cleaning solution or stainless steel cleaners. | Apply cleaner. Wipe off soil using a cloth or sponge for smooth surfaces and a soft brush for textured surfaces. Rinse and dry. |
| Graffiti | Bobrick Graffiti Remover, part #891099 or equivalent. | Apply cleaner, rub spots with soft cloth or sponge. Rinse and dry. |
| Stubborn spots, atmospheric discoloration | Liquid or spray stainless steel polish. | As recommended by manufacturer. Rinse or dry. |
| Mineral deposit or scale from hard water | Bathroom cleaners containing phosphoric acid or acetic acids. | Apply liberally, allow to stand for a few minutes; scrub with coarse toweling or soft bristle brush in direction of grain. Rinse and dry. |
| “Rust” discoloration resulting from exposure to harsh environmental and or chemical conditions Note: Shower and other wet environments may need to be cleaned daily to minimize “rust” discoloration. | Appropriate cleaner listed above, plus 3M Scotch Brite pad #7447 or equivalent. | Clean surface as above, then rub stained area lightly with 3M Scotch Brite pad. Clean with stainless steel polish. Rinse and dry. Rub only with the grain direction of satin finishes. . . do not use on bright polish stainless steel. |

continued . . .

Special Note for Toilet Partition Hardware

Although stainless steel is very resistant to rust, there are certain conditions where this can happen depending on various factors listed below:

- Cleansers containing Chloride or Muriatic Acid (hydrochloric acid).
- Concentrated soap residue where chemical additives to soap may cause discoloration and potentially dry out and result in a rusting appearance.
- Environments where water has high iron content or where contact with iron occurs (such as steel wool, machining chips or iron residue or dust from installation or cleaning of other steel products) can leave a rusty residue.
- Presence of salt containing chlorides.

Remove rust discoloration or corrosion as soon as possible to prevent permanent discoloration and pitting of the surface. Regular cleaning can restore the original condition in most cases with proper maintenance and cleaning. DAILY cleaning should prevent discoloration (rusting and rusting appearance) and corrosion in high moisture environments such as showers and shower compartments.

Materials and Tools Required:

- Mid abrasive cleaner such as Bar Keepers Friend (available at Home Improvement or Discount Stores).
- Soft Sponge and/or 3M Scotch Brite pad #7447 or equivalent.

Follow the Steps Below During Daily Cleaning:

1. Apply a generous amount on the affected areas and rub with a damp sponge in the direction of the grain. NOTE: Avoid using caustic cleaners that contain chlorides as the abrasive nature of these products will further damage the steel's chromium film.
2. Rinse with clear water and gently towel dry.
3. Repeat cleaning process daily or more often depending on severity of rusting.