

CONSULTANTS:

Issued For BULLETIN
11/22/2022
www.ssoe.com

SEAL ON THIS DOCUMENT AUTHORIZED BY:

APPLY STAMP IN BLUEBEAM

PROJECT INFORMATION:

BROWNFIELD MODIFICATIONS

CLIENT INFORMATION:

ASCEND ELEMENTS
ASCEND ELEMENTS
9172 INDUSTRIAL DR NE
COVINGTON, GA
30014

CLIENT PROJECT NO: XXX-XXXX-XX

NO.	DATE	SUBJECT	REVISION OR ISSUE
H	11/22/22	BULLETIN 4 - PKG 11E01	
G	11/03/22	BULLETIN 3 - PKG 13E01	
F	10/10/22	BULLETIN 3 - PKG 11E01	
E	07/22/22	BULLETIN 2 - PKG 11E01	
D	06/02/22	BULLETIN 1 - PKG 11E01	
C	05/03/22	FOR CONSTRUCTION - PKG 11E01	
B	04/28/22	FOR PERMIT - PKG 11E01	
A	03/15/22	ISSUED FOR CONSTRUCTION	

SSOE, Inc.
1001 Madison Avenue
Tomball, TX 77354
T. (419) 255-3830

PROJECT NO: **021-01975-00**
PROJECT MANAGER: R. FOX
DESIGNED: D. WOODS
CHECKED: F. ROWE

DRAWING TITLE:
ENLARGED POWER PLANS

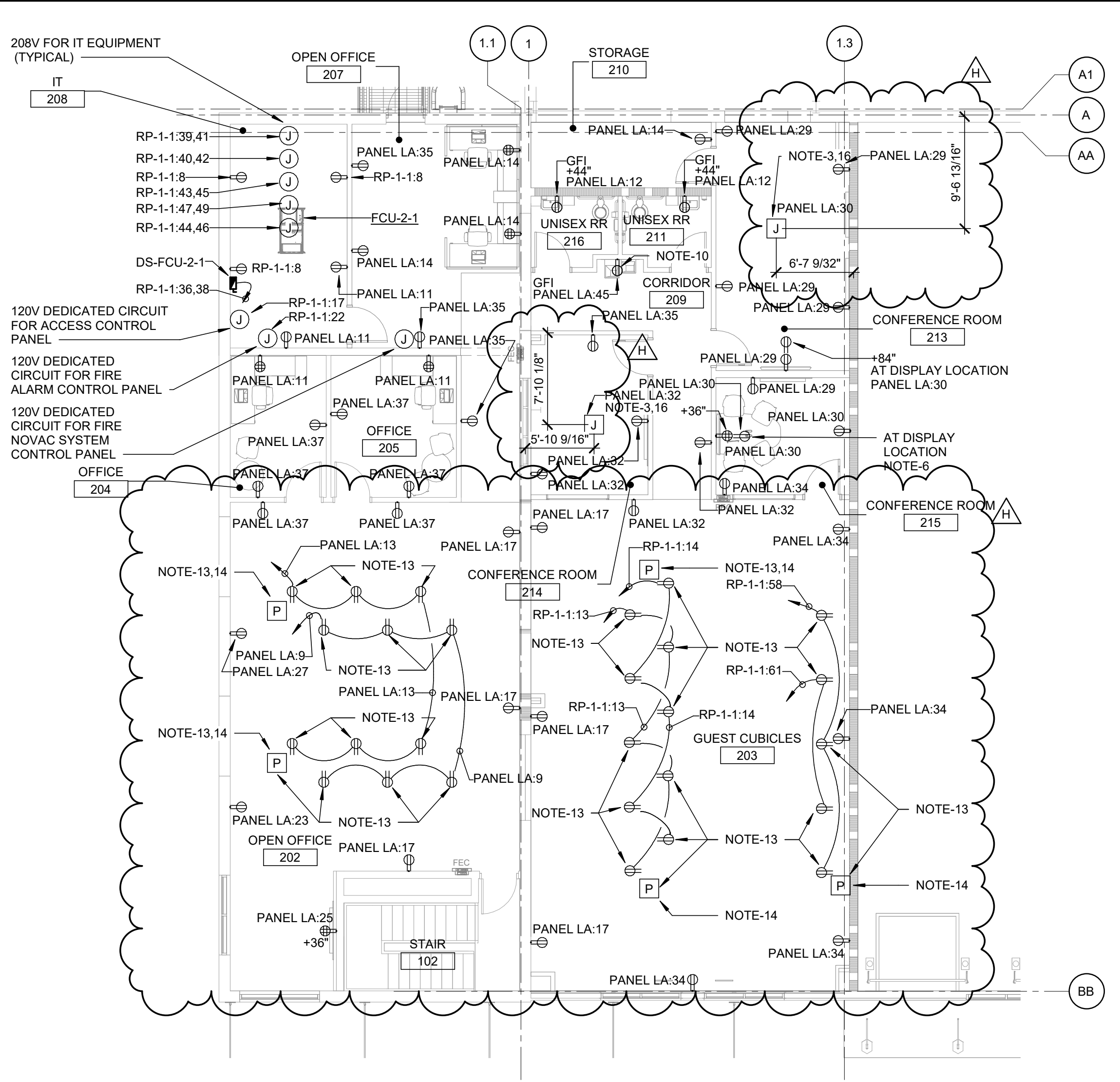
DRAWING NO:
EP-400

GENERAL NOTES:

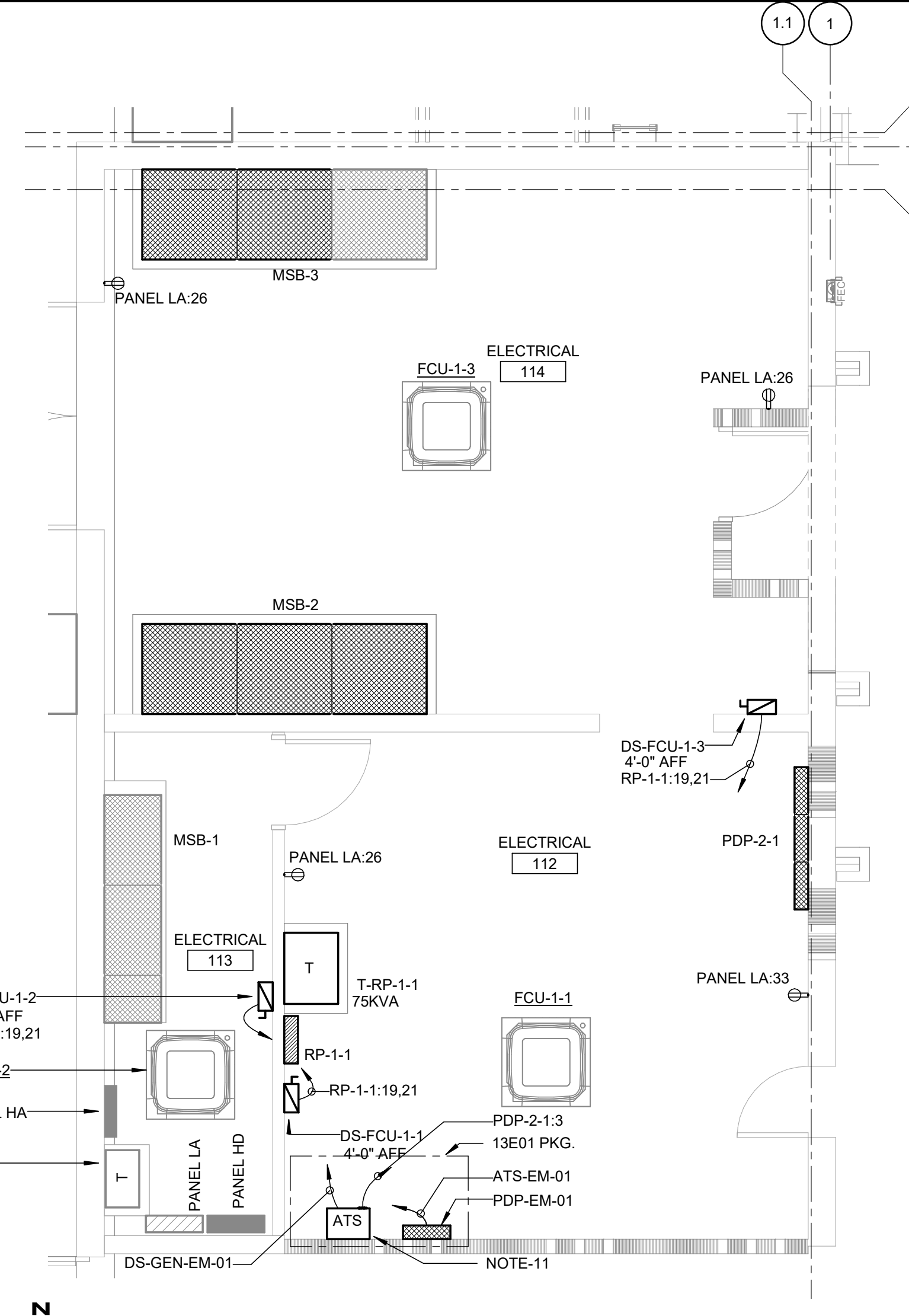
- REFER TO ARCHITECTURAL FLOOR PLAN AND ELEVATIONS FOR EXACT LOCATION OF DEVICES WHERE INDICATED.
- ALL RECEPTACLE OUTLETS SHALL BE RATED 20A.
- ALL DISCONNECT SWITCHES SHALL BE HEAVY DUTY TYPE.
- PROVIDE GFCI PROTECTION WHERE REQUIRED BY THE NEC WHETHER INDICATED OR NOT.
- ALL BRANCH CIRCUIT JUNCTION BOXES SHALL BE LABELED WITH THE CIRCUITS ENCLOSED.
- REFER TO DRAWING EA-003 FOR CIRCUIT REQUIREMENTS.
- ALL CONDUITS SHALL BE ROUTED CONCEALED UNLESS NOTED OTHERWISE.
- ALL ELECTRICAL EQUIPMENT MOUNTED ON THE FLOOR SHALL BE MOUNTED ON A 4" CONCRETE HOUSEKEEPING PAD.
- REFER TO DRAWING EA-002 FOR ADDITIONAL GENERAL NOTES.
- REFER TO DRAWING SERIES EP-600 FOR ONE-LINE DIAGRAMS AND PANEL SCHEDULES FOR CONDUCTOR SIZES UNLESS OTHERWISE NOTED.

NOTES:

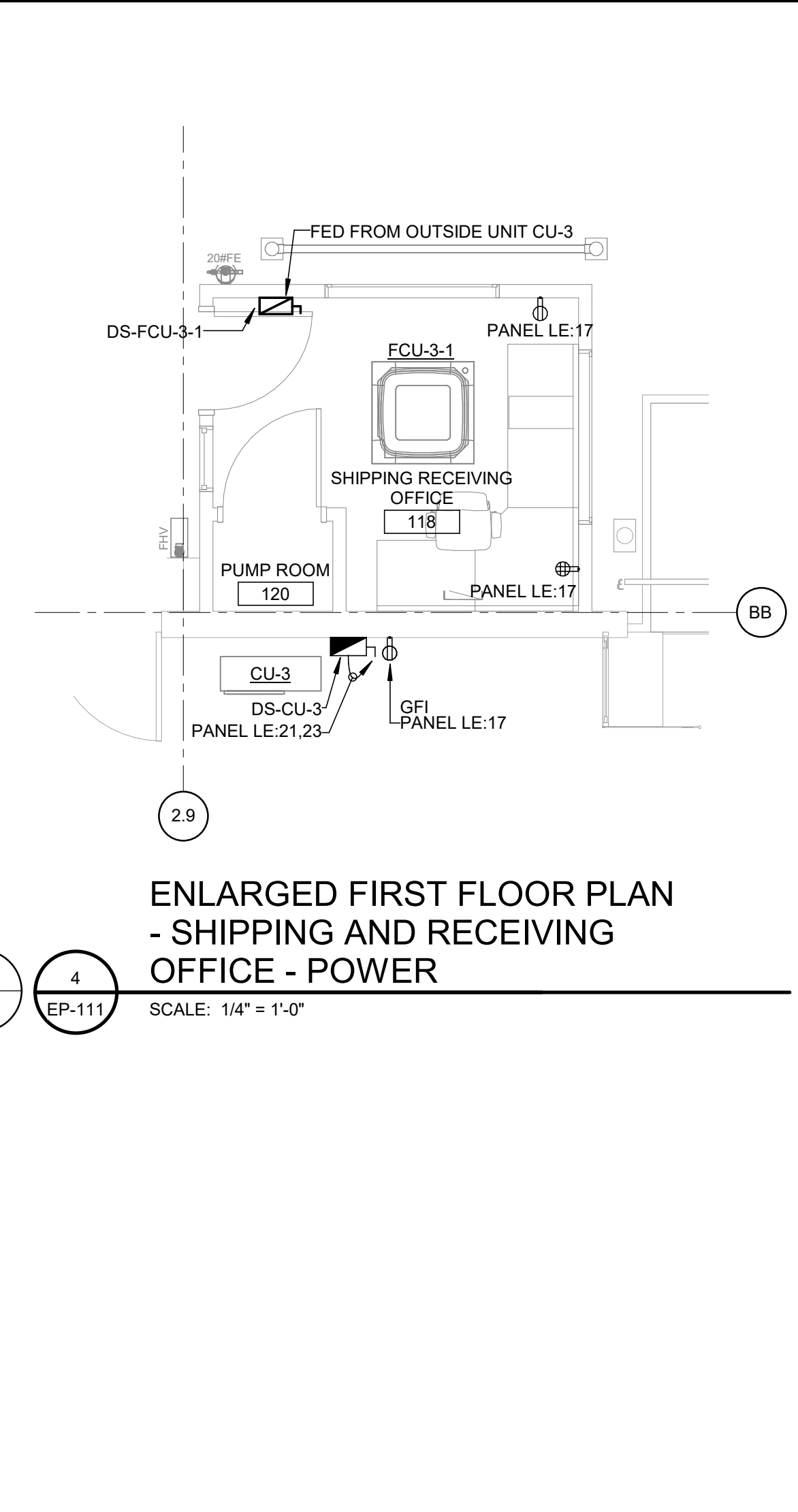
- ALL RECEPTACLES IN LAB 115 SHALL HAVE DEDICATED CIRCUITS.
- LEGRAND WIREMOLD RFB4 FLOOR BOX SUITABLE FOR SLAB ON GRADE USE WITH TWO (2) NEMA 5-20R DUPLEX RECEPTACLES, ALL ACTIVATION PLATES, AND COMMUNICATION BRACKET SUITABLE FOR THE QUANTITY AND TYPE OF JACKS WHERE APPLICABLE. COORDINATE WITH TECHNOLOGY DRAWINGS FOR QUANTITY, TYPES OF JACKS, AND RACEWAY SIZES. SAW CUT SLAB FOR RACEWAY INSTALLATION, AND REPAIR CONCRETE TO ORIGINAL STATE WHEN COMPLETE.
- MULTI-SERVICE RECESSED POKE-THRU DEVICE, PRE-WIRED WITH TWO (2) NEMA 5-20R DUPLEX RECEPTACLES, ALL ACTIVATION PLATES, AND COMMUNICATION BRACKET SUITABLE FOR THE QUANTITY AND TYPE OF JACKS WHERE APPLICABLE. COORDINATE WITH TECHNOLOGY DRAWINGS FOR QUANTITY, TYPES OF JACKS, AND RACEWAY SIZES. SAW CUT SLAB FOR RACEWAY INSTALLATION, AND REPAIR CONCRETE TO ORIGINAL STATE WHEN COMPLETE.
- UTILITY TRANSFORMERS, CONDUITS, AND DUCT BANKS ARE NOT IN CONTRACT. CONDUIT FROM STUB LOCATIONS TO JUNCTION BOXES, JUNCTION BOXES, 4" NIPPLE TRANSITIONS, TOP HATS AND SECONDARY CONDUCTORS ARE IN CONTRACT.
- DEMOLISH EXISTING BOLLARDS, REORIENT EXISTING TRANSFORMER 90 DEGREES WITH FRONT SIDE FACING NORTH. REPLACE DAMAGED RACEWAYS AND REWORK PRIMARY AND SECONDARY CIRCUITRY TO NEW ORIENTATION.
- COORDINATE FINAL INSTALLATION LOCATION AND MOUNTING HEIGHT WITH OWNER PRIOR TO ROUGH-IN.
- SIZE FUSES PER END-USE EQUIPMENT NAMEPLATE REQUIREMENTS.
- COORDINATE WIRING AND CONTROLS BETWEEN FUME HOOD AND EF-37 WITH MH SERIES MECHANICAL DRAWINGS. PROVIDE RGS BETWEEN JUNCTION BOX AT EQUIPMENT AND JUNCTION BOX AT WALL. COORDINATE WITH FUME HOOD MANUFACTURER'S DRAWINGS.
- JUNCTION BOX FOR MOTORIZED DAMPER INSIDE OF BUILDING AT THE EXHAUST FAN. COORDINATE JUNCTION BOX MOUNTING LOCATION WITH MECHANICAL CONTRACTOR.
- RECEPTACLE TO BE MOUNTED TO MAINTAIN ACCESSIBILITY WITH EWC INSTALLED.
- CONTRACTOR TO PROVIDE 200A 3 WIRE OPEN TRANSITION AUTOMATIC TRANSFER SWITCH (ATS), MATCH BRAND OF AUTOMATIC TRANSFER SWITCH TO GENERATOR. NEMA-1 ENCLOSURE. PROVIDE WIRING AND RACEWAYS BETWEEN AUTOMATIC TRANSFER SWITCH AND GENERATOR.
- REMOTE MONITOR FOR GENERATOR SHALL BE INSTALLED IN A CONSTANTLY ATTENDED SPACE WITHIN THE BUILDING. COORDINATE FINAL INSTALLATION LOCATION WITH OWNER PRIOR TO ROUGH-IN. INSTALLATION FOR A WIRED GENERATOR ANNUNCIATOR PANEL WHERE APPLICABLE.
- RECEPTACLES IN CUBICAL WORKSTATIONS TO BE INSTALLED IN A CONSTANTLY ATTENDED SPACE WITHIN THE BUILDING. COORDINATE FINAL INSTALLATION LOCATION WITH OWNER PRIOR TO ROUGH-IN. INSTALLATION FOR A WIRED GENERATOR ANNUNCIATOR PANEL WHERE APPLICABLE.
- PRIOR TO ROUGH-IN COORDINATE FINAL INSTALLATION LOCATION WITH FURNITURE AND FURNITURE VENDOR DRAWINGS FOR LOCATIONS OF POWER POLES AND LOCATIONS OF RECEPTACLES IN FURNITURE. PROVIDE ALL ACTIVATION PLATES, ACCESSORIES, HARDWARE, AND RACEWAYS.
- PRIOR TO ROUGH-IN COORDINATE FINAL INSTALLATION LOCATION WITH FURNITURE AND FURNITURE VENDOR DRAWINGS.



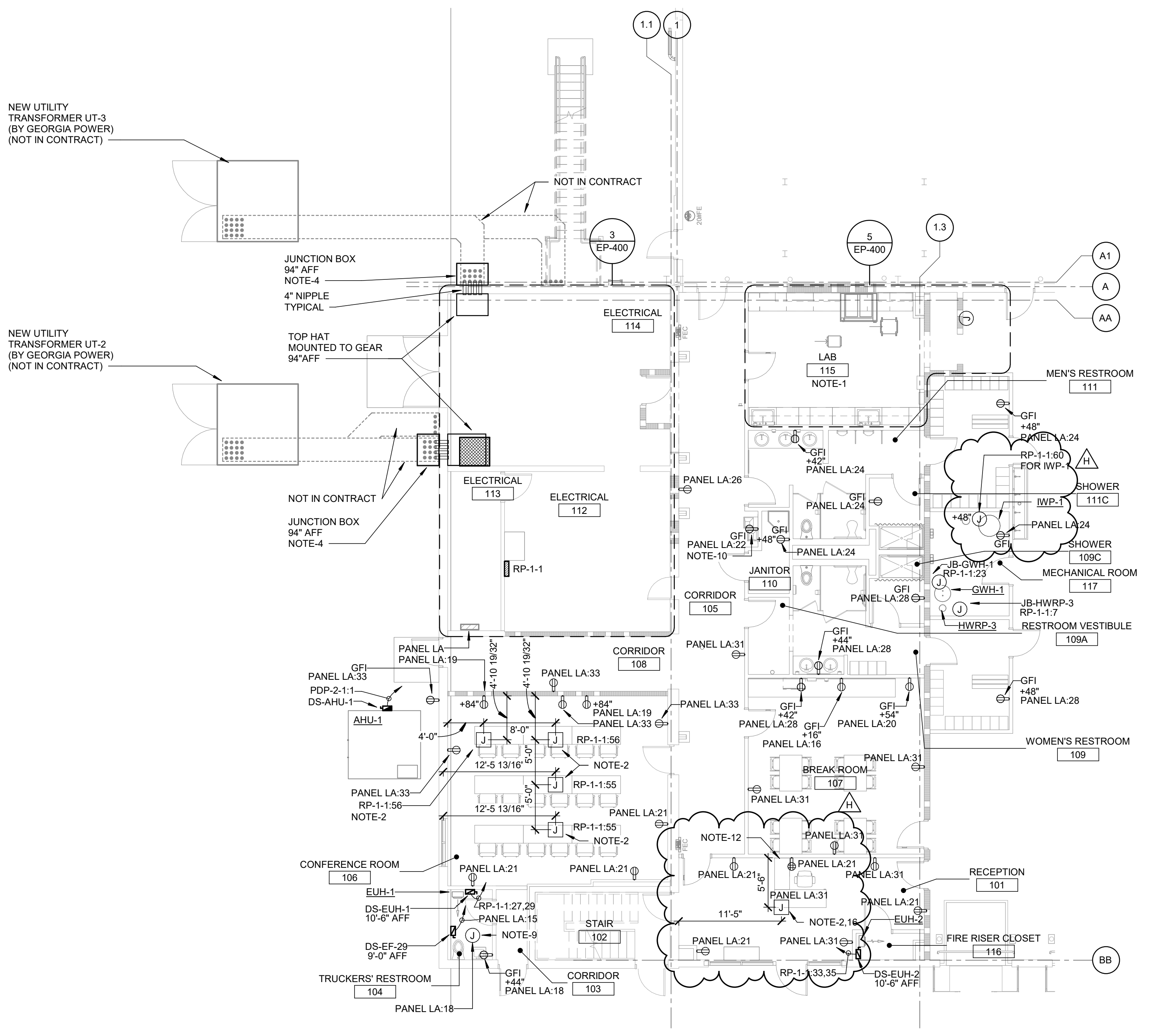
ENLARGED SECOND FLOOR OFFICE PLAN - POWER
SCALE: 1/8" = 1'-0"



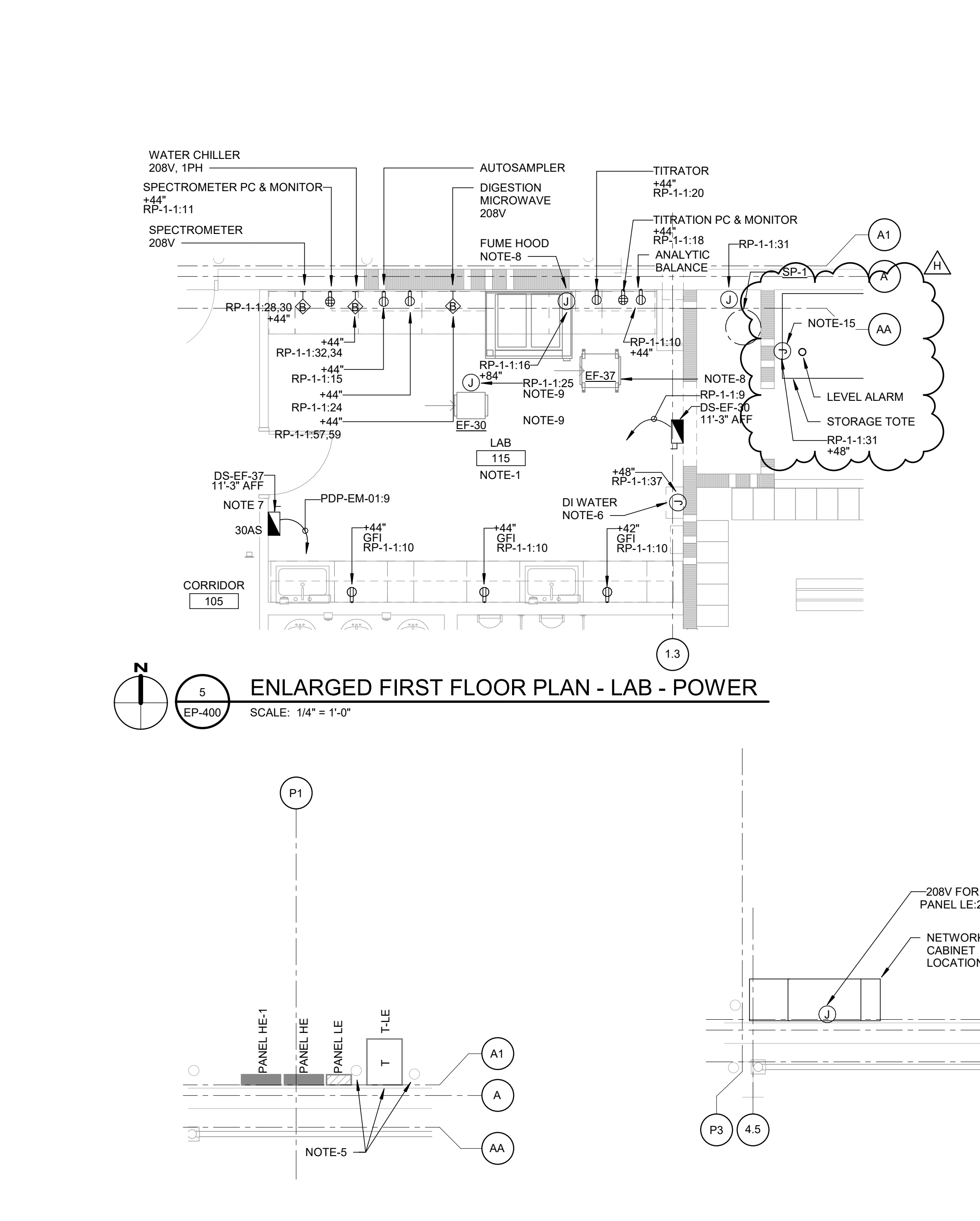
ENLARGED POWER PLAN - ELECTRICAL ROOMS
SCALE: 1/4" = 1'-0"



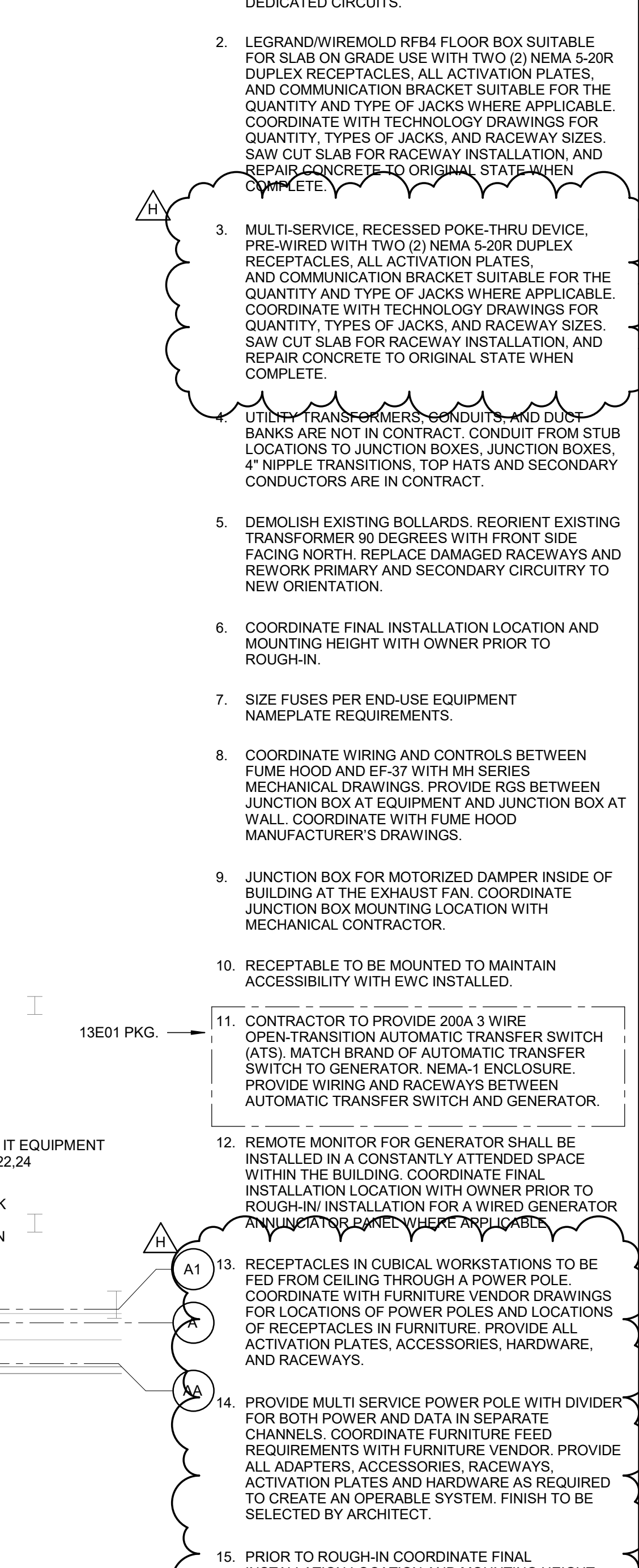
ENLARGED FIRST FLOOR PLAN - SHIPPING AND RECEIVING OFFICE - POWER
SCALE: 1/4" = 1'-0"



ENLARGED FIRST FLOOR PLAN - OFFICE - POWER
SCALE: 1/8" = 1'-0"



ENLARGED FIRST FLOOR PLAN - LAB - POWER
SCALE: 1/4" = 1'-0"



ENLARGED FIRST FLOOR PLAN - PROCESS AREA - POWER
SCALE: 1/4" = 1'-0"