

CONSULTANTS:

Issued For
BULLETIN
10/11/2022
www.ssoe.com

SEAL ON THIS DOCUMENT AUTHORIZED BY:

APPLY STAMP IN
BLUE/BEAM

PROJECT INFORMATION:

**BROWNFIELD
MODIFICATIONS**

CLIENT INFORMATION:

**ASCEND
ELEMENTS**
ASCEND
ELEMENTS
9172 INDUSTRIAL DR NE
COVINGTON, GA
30014

CLIENT PROJECT NO: XXX-XXXXX-XX

C	10/11/22	ISSUED FOR BULLETIN 2
B	07/22/22	ISSUED FOR BULLETIN 1
A	06/06/22	ISSUED FOR IFC
NO.	DATE	SUBJECT
REVISION OR ISSUE		

SSOE, Inc.
1001 Madison Avenue
Tomball, TX 77364
T: (419) 255-3830

PROJECT NO: 021-01975-00
PROJECT MANAGER: R. FOX
DESIGNED: J. DELANEY
CHECKED: M. SMITH

DRAWING TITLE:
**FIRE ALARM DRY
PROCESS FLOOR PLAN**

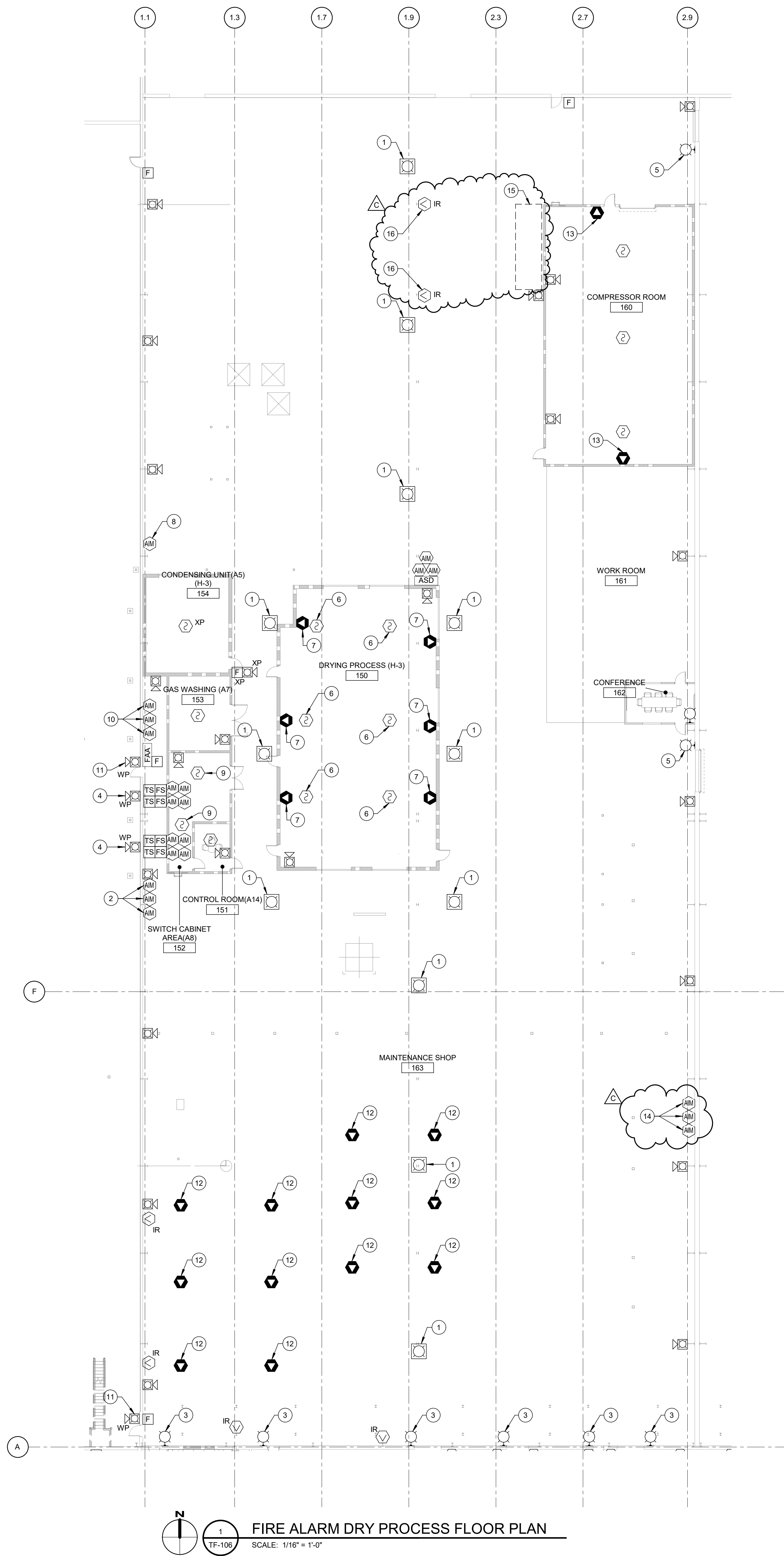
DRAWING NO:
TF-106

GENERAL NOTES

- A. SEE SHEET TA-001 FOR SYMBOL SCHEDULE AND GENERAL NOTES.
- B. UNLESS OTHERWISE NOTED, NOTIFICATION DEVICES IN THE DRY PROCESS AREA ARE TO ONLY ACTIVATE UPON AN ALARM IN THE DRY PROCESS AREA.
- C. THE CABLE MANAGEMENT SUPPRESSION SYSTEM IS ACTIVELY BEING MONITORED BY A FIRE ALARM CONTROL PANEL. THIS IS TO REMAIN INTACT UNTIL THE NEW ASCEND ELEMENTS SYSTEM IS READY TO BE MONITORED. AT THAT POINT, REMOVE THE STAND-ALONE FIRE ALARM CONTROL PANEL AND MONITOR THE SUPPRESSION CONTROL PANEL WITH THE MONITOR MODULES IN PLAN NOTE 14. THE INTENT IS TO NOT DISRUPT THE MONITORING OF THE CABLE MANAGEMENT SYSTEM. ONCE THE SWITCH IS COMPLETE, DEMO THE STAND-ALONE SYSTEM AND TURN THE EQUIPMENT OVER TO ASCEND ELEMENTS AND DISPOSE OF THE CABLE AND CONDUIT OFF SITE.

PLAN NOTES

- 1. PENDENT MOUNT NOTIFICATION DEVICE SO THAT THE STROBE IS NO MORE THAN 30'-0" ABOVE FINISHED FLOOR.
- 2. MONITOR URT FIRE SUPPRESSION SYSTEM FOR LOW, MID, AND HIGH ALARM. PROGRAM FIRE ALARM CONTROL PANEL FOR SUPERVISORY SIGNALS ON LOW AND MID ALARMS. ACTIVATE NOTIFICATION DEVICES UPON A HIGH ALARM.
- 3. ACTIVATE STROBE WHEN THERE IS AN ALARM IN THE OFFICE OR STORAGE AREA.
- 4. ACTIVATE SPEAKER STROBE WHEN THERE IS A WATERFLOW ALARM FROM THE ADJACENT SPRINKLER RISER.
- 5. ACTIVATE STROBE WHEN THERE IS AN ALARM IN THE WET PROCESS AREA.
- 6. SAMPLING PORT ON THE ASPIRATING SMOKE DETECTOR.
- 7. GAS DETECTOR TO MONITOR FOR ETHYLENE CARBONATE AND DIETHYL CARBONATE. LOW OXYGEN DETECTION ALSO REQUIRED IN THIS ROOM.
- 8. MONITOR MODULE FOR EXPLOSION PROOF SMOKE DETECTOR.
- 9. CONNECT SMOKE DETECTOR TO THE CLEAN AGENT SYSTEM AND PROGRAM TO ACTIVATE THE RELEASE UPON CROSS ZONING BOTH DETECTORS. COORDINATE WITH THE SPRINKLER CONTRACTOR ON EQUIPMENT MANUFACTURER AND TERMINATION OF THE DETECTORS.
- 10. MONITOR URT CONTROL ROOM FIRE SUPPRESSION CONTROL PANEL FOR ALARM, TROUBLE, AND SUPERVISORY SIGNALS.
- 11. ACTIVATE SPEAKER STROBE WHEN THERE IS AN ALARM IN THE DRY PROCESS AREA.
- 12. GAS DETECTORS TO MONITOR FOR HYDROGEN.
- 13. LOW OXYGEN SENSOR
- 14. MONITOR CABLE MANAGEMENT FIRE SUPPRESSION CONTROL PANEL FOR ALARM, TROUBLE, AND SUPERVISORY SIGNALS.
- 15. FORK TRUCK CHARGING STATION. THIS CHARGING STATION WILL ONLY USE FORK TRUCKS THAT ARE POWERED FROM LITHIUM ION BATTERIES. IT WILL BE MONITORED WITH RADIANT ENERGY FLAME DETECTORS.
- 16. RADIANT ENERGY FLAME DETECTOR TO MONITOR THE FORK TRUCK CHARGING STATION IN NOTE 15.



FIRE ALARM DRY PROCESS FLOOR PLAN
SCALE: 1/16" = 1'-0"