

CONSULTANTS:

Issued For  
**BULLETIN**  
07/22/2022  
www.ssoe.com

SEAL ON THIS DOCUMENT AUTHORIZED BY:

APPLY STAMP IN  
BLUEBEAM

PROJECT INFORMATION:

**BROWNFIELD  
MODIFICATIONS**

CLIENT INFORMATION:



**ASCEND  
ELEMENTS**  
ASCEND  
ELEMENTS  
9172 INDUSTRIAL DR NE  
COVINGTON, GA  
30014

CLIENT PROJECT NO: XXX-XXXXX-XX

|                   |          |                       |
|-------------------|----------|-----------------------|
| B                 | 07/22/22 | ISSUED FOR BULLETIN 1 |
| A                 | 06/06/22 | ISSUED FOR IFC        |
| NO.               | DATE     | SUBJECT               |
| REVISION OR ISSUE |          |                       |

**SSOE, Inc.**  
1001 Madison Avenue  
Tomball, TX 77364  
T: (419) 255-3830

PROJECT NO: 021-01975-00  
PROJECT MANAGER: R. FOX  
DESIGNED: J. DELANEY  
CHECKED: M. SMITH

DRAWING TITLE:  
**FIRE ALARM WET  
PROCESS GROUND  
FLOOR PLAN**

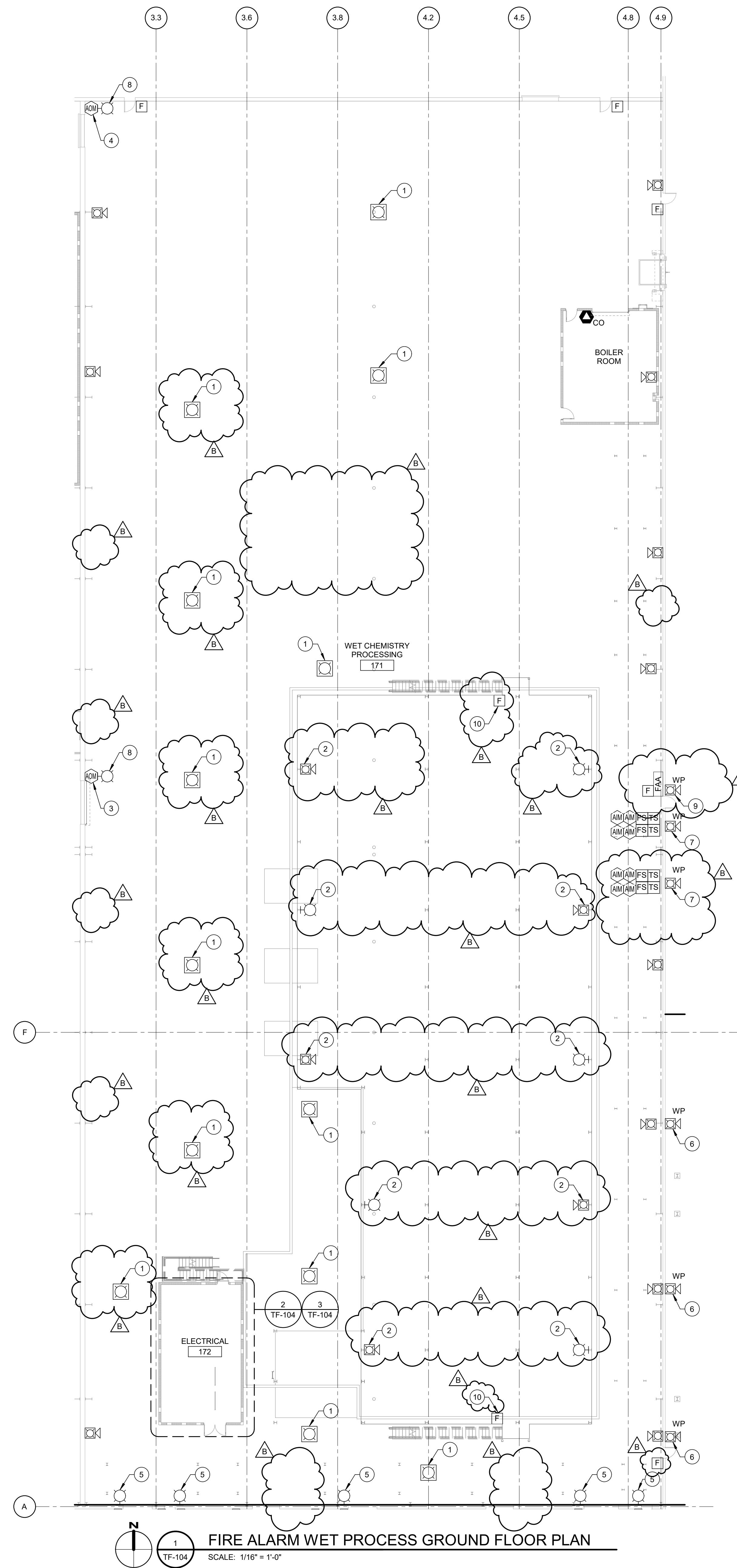
DRAWING NO:  
**TF-104**

**GENERAL NOTES**

- A. SEE SHEET TA-001 FOR SYMBOL SCHEDULE AND GENERAL NOTES.
- B. UNLESS OTHERWISE NOTED, NOTIFICATION DEVICES IN THE WET PROCESS AREA ARE TO ONLY ACTIVATE UPON AN ALARM IN THE WET PROCESS AREA.

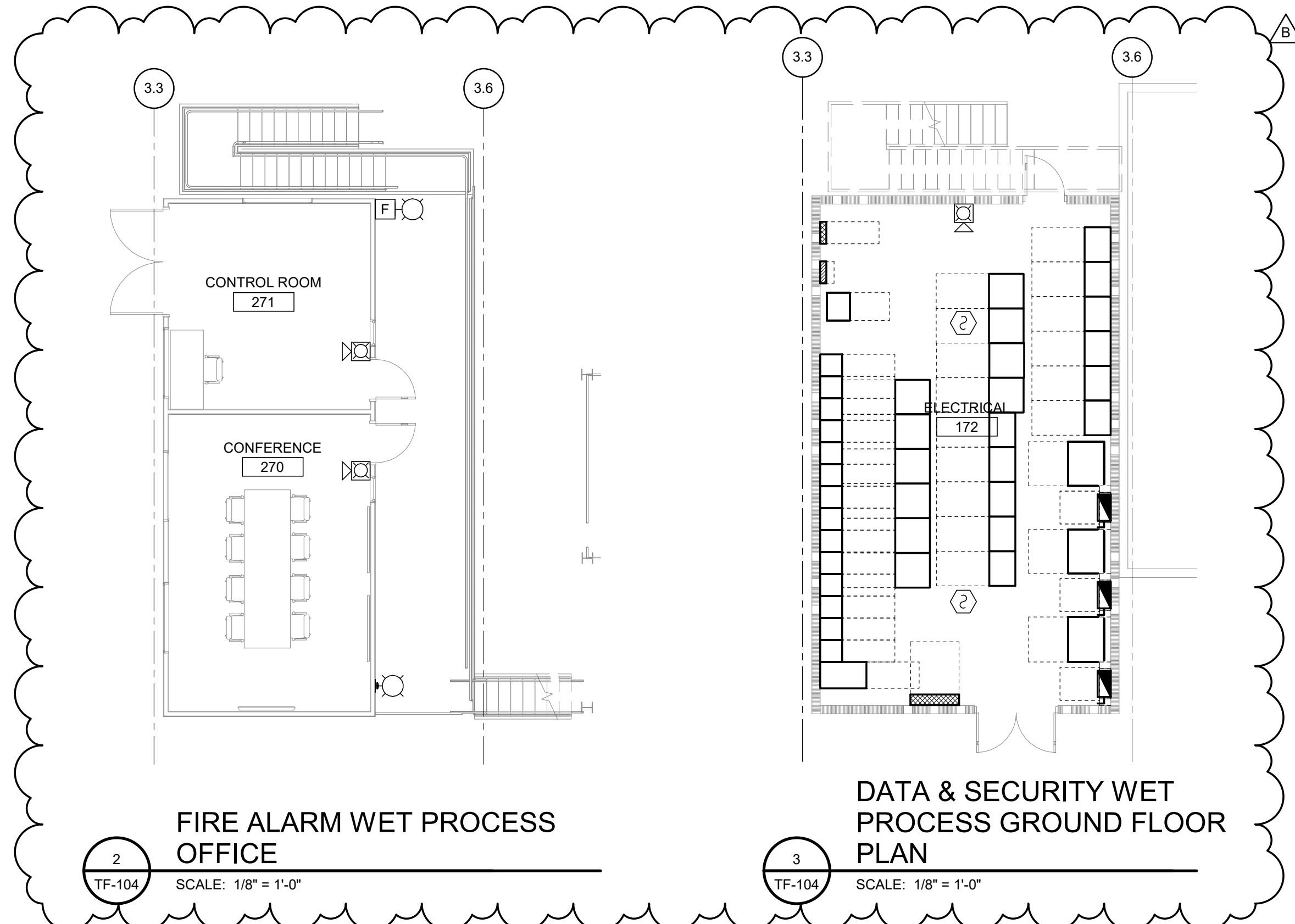
**PLAN NOTES**

- 1. PENDENT MOUNT NOTIFICATION DEVICE SO THAT THE STROBE IS NO MORE THAN 30'-0" ABOVE FINISHED FLOOR.
- 2. MOUNT STROBE UNDER THE MEZZANINE FOR GROUND FLOOR COVERAGE.
- 3. ADDRESSABLE RELAY TO ACTIVATE DURING AN ALARM IN EITHER THE WET OR DRY PROCESS AREA AND CONTROL THE OVERHEAD DOOR OPERATOR. DOOR MUST CLOSE DURING A FIRE ALARM.
- 4. ADDRESSABLE RELAY TO ACTIVATE DURING AN ALARM IN EITHER THE WET OR DRY PROCESS AREA AND CONTROL THE DOOR HOLD OPEN DEVICE. DOOR MUST CLOSE DURING A FIRE ALARM.
- 5. ACTIVATE STROBE WHEN THERE IS AN ALARM IN THE STORAGE AREA.
- 6. ACTIVATE SPEAKER STROBE WHEN THERE IS AN ALARM IN THE WET PROCESS AREA.
- 7. ACTIVATE SPEAKER STROBE ON A WATERFLOW ALARM FROM THE ADJACENT SPRINKLER RISER.
- 8. ACTIVATE STROBE WHEN THERE IS AN ALARM IN THE DRY PROCESS AREA.
- 9. ACTIVATE SPEAKER STROBE ON A GENERAL FIRE ALARM.
- 10. CONTRACTOR TO MANUFACTURE A MEANS TO SUPPORT THE PULL STATION AT THE TOP OF THE STAIRS.



**FIRE ALARM WET PROCESS GROUND FLOOR PLAN**

TF-104 SCALE: 1/16" = 1'-0"



**FIRE ALARM WET PROCESS OFFICE**

TF-104 SCALE: 1/8" = 1'-0"

**DATA & SECURITY WET PROCESS GROUND FLOOR PLAN**

TF-104 SCALE: 1/8" = 1'-0"