

CONSULTANTS:

Issued For
BULLETIN
10/11/2022
www.ssoe.com

SEAL ON THIS DOCUMENT AUTHORIZED BY:

APPLY STAMP IN
BLUE/BEAM

PROJECT INFORMATION:

**BROWNFIELD
MODIFICATIONS**

CLIENT INFORMATION:



**ASCEND
ELEMENTS**
ASCEND
ELEMENTS
9172 INDUSTRIAL DR NE
COVINGTON, GA
30014

CLIENT PROJECT NO: XXX-XXXXX-XX

C	10/11/22	ISSUED FOR BULLETIN 2
B	07/22/22	ISSUED FOR BULLETIN 1
A	06/06/22	ISSUED FOR IFC
NO.	DATE	SUBJECT
REVISION OR ISSUE		

SSOE, Inc.
1001 Madison Avenue
Tomball, TX 77364
T: (419) 255-3830

PROJECT NO: 021-01975-00
PROJECT MANAGER: R. FOX
DESIGNED: J. DELANEY
CHECKED: M. SMITH

DRAWING TITLE:
**DATA & SECURITY
OVERALL FIRST FLOOR
CABLE TRAY PLAN**

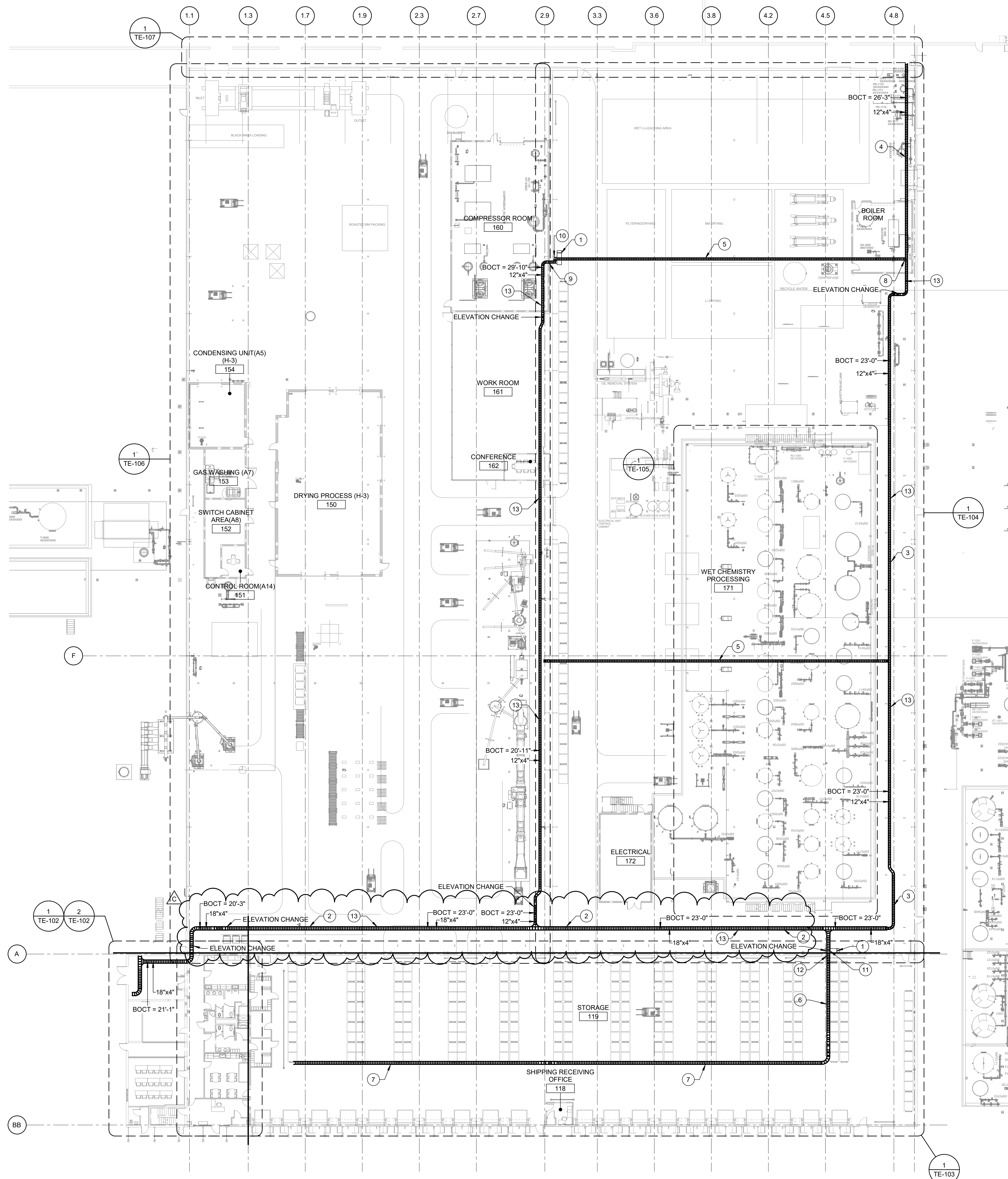
DRAWING NO:
TE-101

GENERAL NOTES

- A. SEE SHEET TA-001 FOR SYMBOL SCHEDULE AND GENERAL NOTES.
- B. ALL WALL PENETRATIONS MUST MEET FIRE RATING OF THE WALL.

PLAN NOTES #

- 1. NETWORK CABINET.
- 2. 4" X 18" BASKET TRAY. PARTITION IT SO THAT THERE ARE TWO PARTITIONS, ONE 12" SECTION FOR NETWORK CABLES, AND ONE 6" SECTION FOR SECURITY CABLES. INSTALL BASKET TRAY SO THAT IT IS SUPPORTED BY THE PIPE RACK.
- 3. 4" X 12" BASKET TRAY. PARTITION IT SO THAT THERE ARE TWO PARTITIONS, ONE 8" SECTION FOR NETWORK CABLES, AND ONE 4" SECTION FOR SECURITY CABLES. INSTALL BASKET TRAY SO THAT IT IS SUPPORTED BY THE PIPE RACK.
- 4. 4" X 12" BASKET TRAY. PARTITION IT SO THAT THERE ARE TWO PARTITIONS, ONE 8" SECTION FOR NETWORK CABLES, AND ONE 4" SECTION FOR SECURITY CABLES. PROVIDE AND INSTALL WALL MOUNT SUPPORTS WHERE THERE IS NO PIPE RACK. BASKET TRAY TO BE SUPPORTED BY THE WALL MOUNT SUPPORTS.
- 5. 4" X 12" BASKET TRAY SUPPORT SPAN NOT TO EXCEED 5'-0". PARTITION THE BASKET TRAY SO THAT THERE ARE TWO PARTITIONS, ONE 8" SECTION FOR NETWORK CABLES AND ONE 4" SECTION FOR SECURITY CABLES. INSTALL BASKET TRAY IN LINE WITH STRUCTURAL BEAM AS SHOWN ON THE PLAN. TRAY SHALL LINE UP WITH THE BOTTOM OF THE BEAM.
- 6. 4" X 12" BASKET TRAY SUPPORT SPAN NOT TO EXCEED 8'-0". PARTITION THE BASKET TRAY SO THAT THERE ARE TWO PARTITIONS, ONE 8" SECTION FOR NETWORK CABLES AND ONE 4" SECTION FOR SECURITY CABLES. INSTALL BASKET TRAY IN LINE WITH STRUCTURAL BEAM AS SHOWN ON THE PLAN. TOP OF TRAY SHALL LINE UP WITH THE BOTTOM OF THE BEAM.
- 7. 4" X 12" BASKET TRAY SUPPORT SPAN NOT TO EXCEED 8'-0". PARTITION THE BASKET TRAY SO THAT THERE ARE TWO PARTITIONS, ONE 8" SECTION FOR NETWORK CABLES AND ONE 4" SECTION FOR SECURITY CABLES. INSTALL BASKET TRAY PERPENDICULAR TO LARGE STRUCTURAL BEAMS. TOP OF TRAY SHALL BE AT THE BOTTOM OF THE LARGE BEAMS.
- 8. WATERFALL DOWN FROM HIGHER CABLE TRAY TO THE CABLE TRAY ON THE TRESTLE BELOW.
- 9. PROVIDE FIRE RATED PENETRATION THROUGH THE WALL FROM THE DRY PROCESSING AREA INTO THE WET PROCESSING AREA FOR CABLING FROM THE IT HUB.
- 10. PROVIDE VERTICAL CABLE TRAY SUPPORTED FROM THE HIGHEST CABLE TRAY ELEVATION DOWN TO THE IT HUB.
- 11. PROVIDE VERTICAL CABLE TRAY WATERFALL DOWN FROM THE TRESTLE TO THE IT HUB.
- 12. PROVIDE FIRE RATED PENETRATION THROUGH THE WALL FROM THE STORAGE AREA INTO THE DRY PROCESSING AREA FOR CABLING FROM THE IT HUB.
- 13. OWNER REQUESTED ONE CAT6 CABLE TO BE INSTALLED AND LEFT COILED UP IN THE BASKET TRAY AT THIS LOCATION. TERMINATE THE CABLE AT THE NEAREST PATCH PANEL. THE LENGTH OF THE FUTURE CIRCUIT SHALL BE 90 METERS.



DATA & SECURITY OVERALL FIRST FLOOR CABLE TRAY PLAN
SCALE: 3/64" = 1'-0"