

Issued For
CONSTRUCTION
04/29/2022
www.ssoe.com

SEAL ON THIS DOCUMENT AUTHORIZED BY:



PROJECT INFORMATION:

BROWNFIELD MODIFICATIONS

CLIENT INFORMATION:

ASCEND ELEMENTS
ASCEND ELEMENTS, INC
9172 INDUSTRIAL DR NE
COVINGTON, GA
30014

CLIENT PROJECT NO: XXX-XXXX-XX

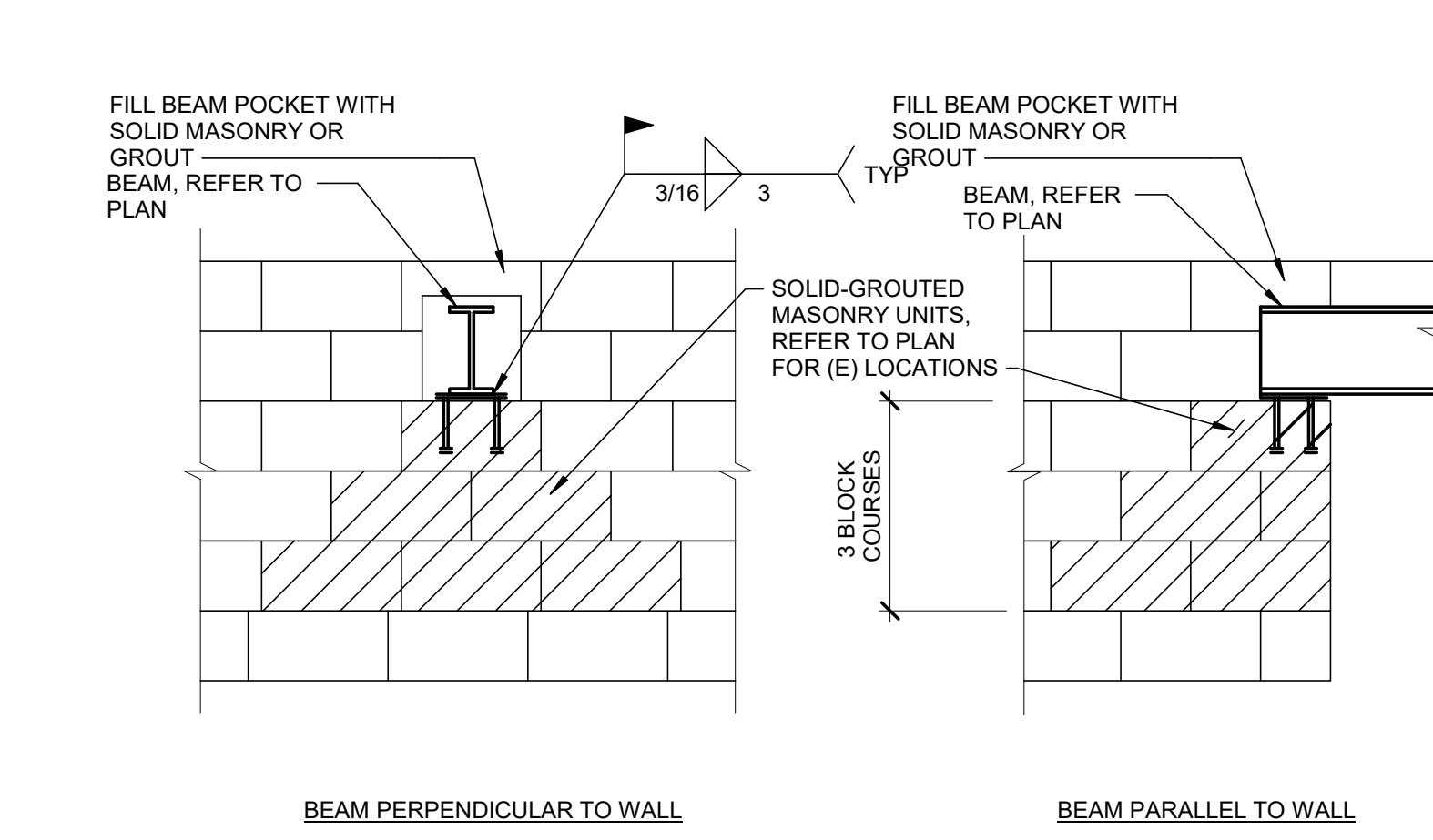
NO.	DATE	SUBJECT

SSOE, Inc.
1001 Madison Avenue
Tomball, TX 77364
T. (419) 255-3830

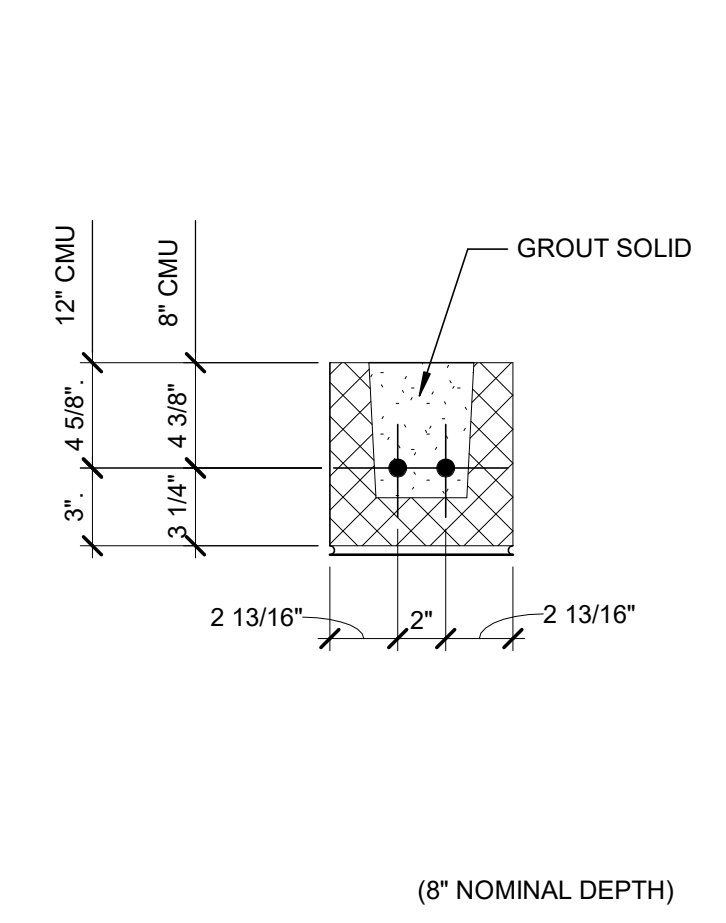
PROJECT NO: 021-01975-00
PROJECT MANAGER: R. FOX
DESIGNED: H. FIRSTER
CHECKED: D. LYKINS

DRAWING TITLE:
CMU DETAILS

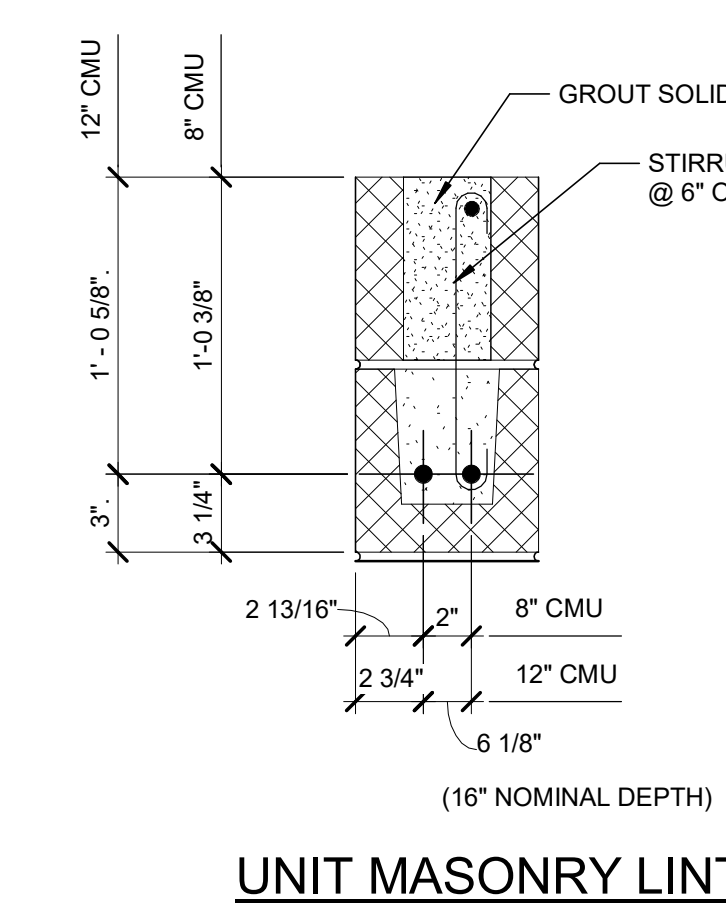
DRAWING NO:
SS-600



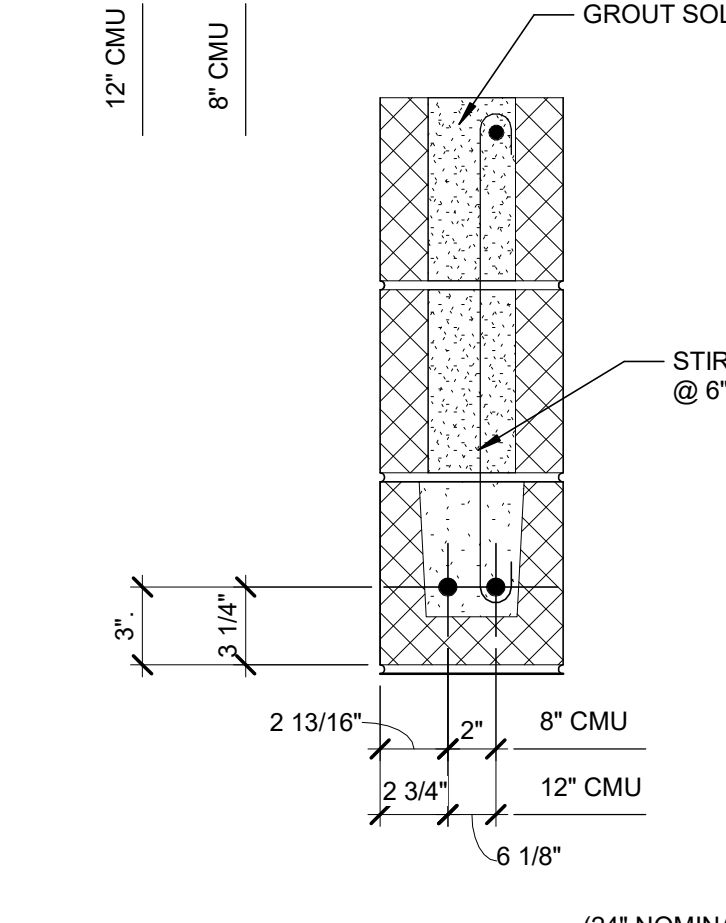
1 MASONRY WALL BEAM POCKET 1
SS-600 SCALE: 3/4" = 1'-0"



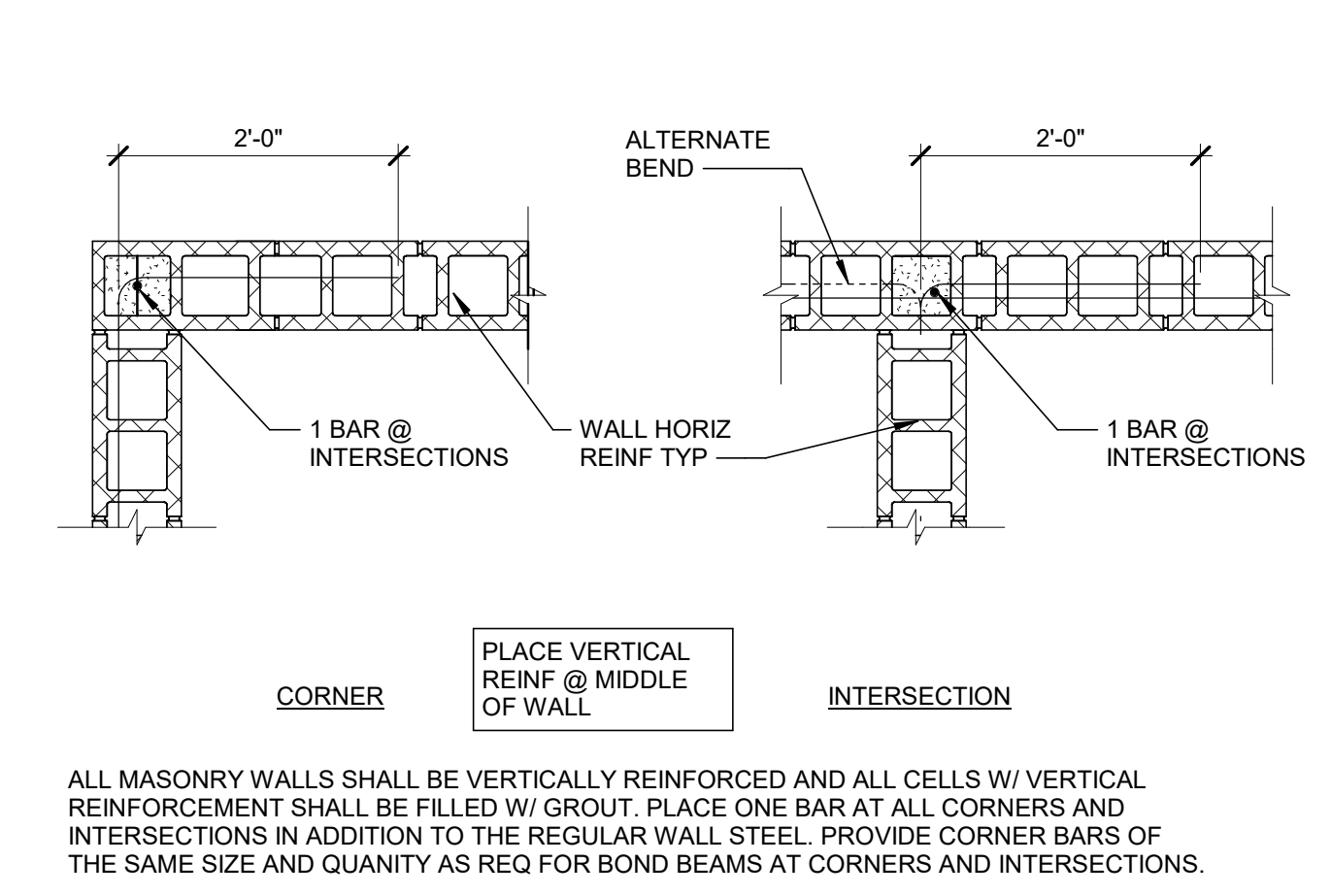
2 ONE COURSE LINTEL
SS-600 SCALE: 1 1/2" = 1'-0"



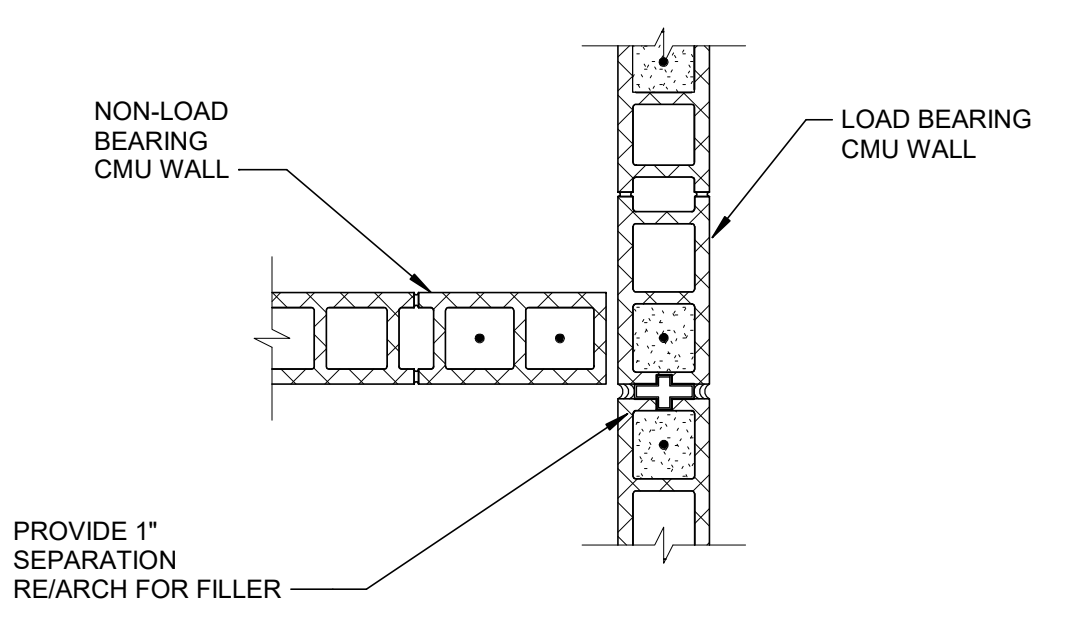
3 TWO COURSE LINTEL
SS-600 SCALE: 1 1/2" = 1'-0"



4 THREE COURSE LINTEL
SS-600 SCALE: 1 1/2" = 1'-0"



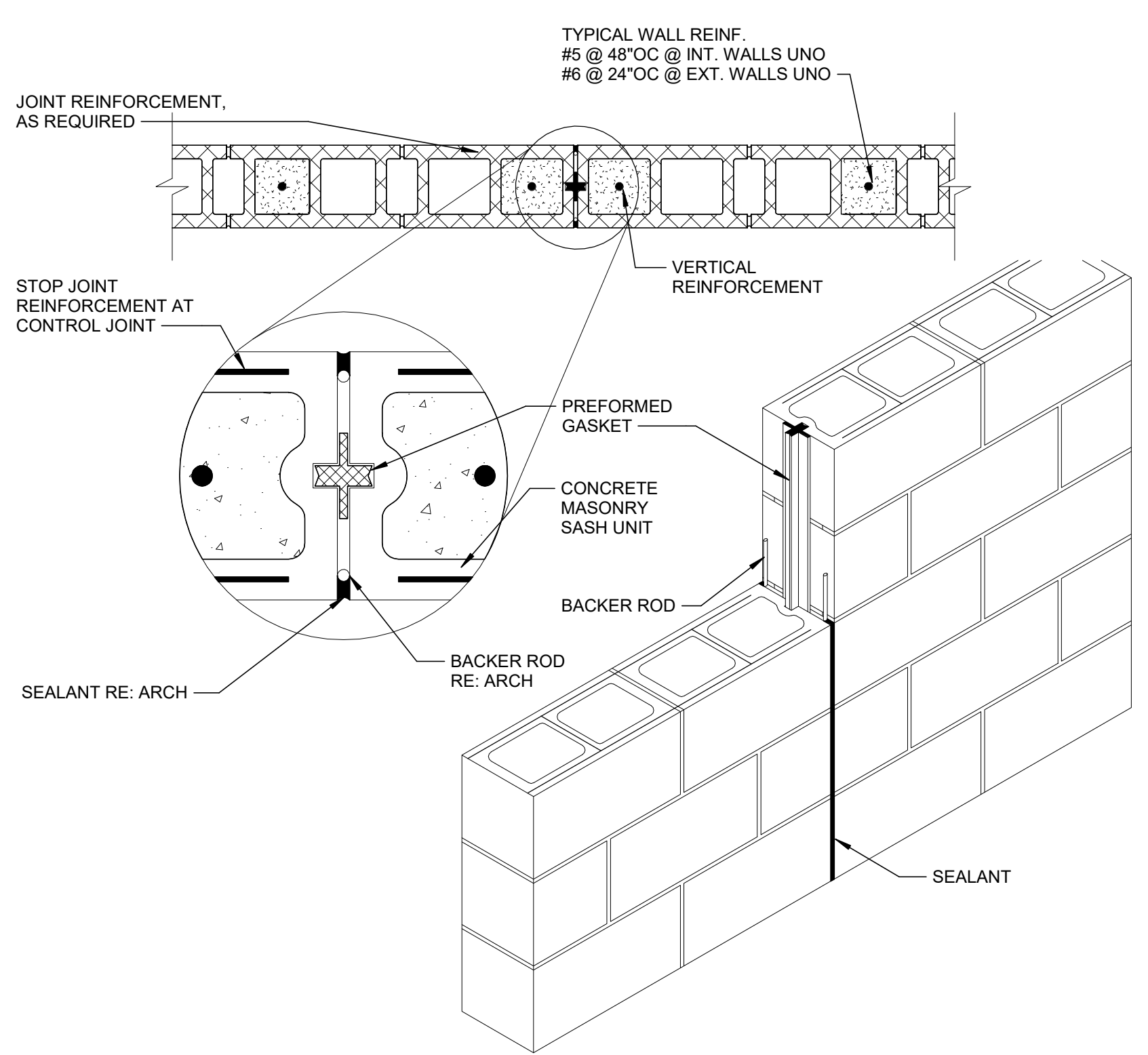
5 TYP MASONRY HORIZONTAL REINFORCING
SS-600 SCALE: 3/4" = 1'-0"



6 TYPICAL @ NON-LOAD BEARING WALL TO LOAD BEARING WALL INTERSECTION
SS-600 SCALE: 3/4" = 1'-0"

MASONRY LINTEL SCHEDULE					
CMU	CLEAR WALL OPENING	BOND BEAM DEPTH	REINFORCEMENT	STIRRUPS & SPACING	REMARKS
8" / 12"	UP TO 4'-0"	8"	(2) #4 BOTTOM	NONE	
	4'-0" TO 5'-11"	8"	(2) #5 BOTTOM	NONE	
	6'-0" TO 8'-0"	16"	(2) #5 TOP & BOTTOM	#3 @ 6" OC	
	8'-1" TO 10'-0"	24"	(2) #5 TOP & BOTTOM	#3 @ 6" OC	
	10'-1" TO 12'-0"	32" MIN	(2) #6 TOP & BOTTOM	#3 @ 6" OC	MIN BEARING 16"

NOTE:
1. PROVIDE 8" MIN BEARING EACH END OF BOND BEAMS UNO
2. FILL 2 BLOCK CORES MIN BELOW EACH BEARING END OF BOND BEAMS
3. FOR WALL ABOVE LINTEL, DOWEL VERTICAL REINF INTO FULL DEPTH OF LINTEL OR DEVELOPMENT LENGTH WHICHEVER IS LESS, ANCHOR VERTICAL REINF WITH STANDARD HOOK
4. SPLICE TOP BARS AT MIDSPAN OF LINTEL ONLY
5. SPLICE BOTTOM BARS OVER SUPPORTS ONLY
6. REFER TO DETAILS 2,3 AND 4 THIS SHEET.

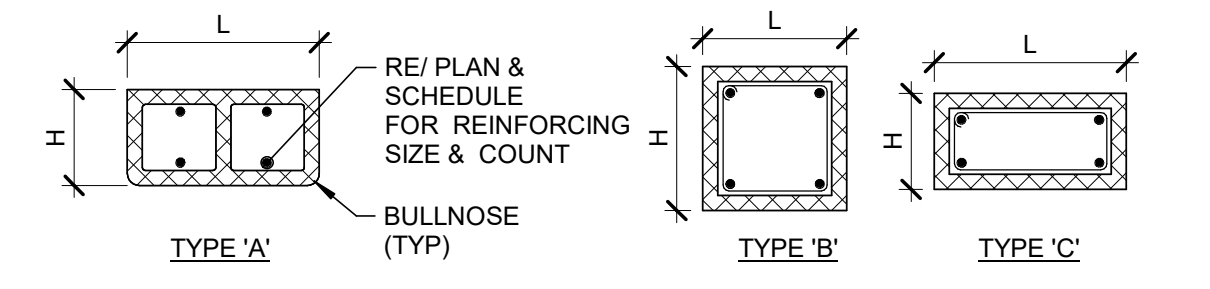


8 TYPICAL MASONRY CONTROL JOINT
SS-600 SCALE: 1" = 1'-0"

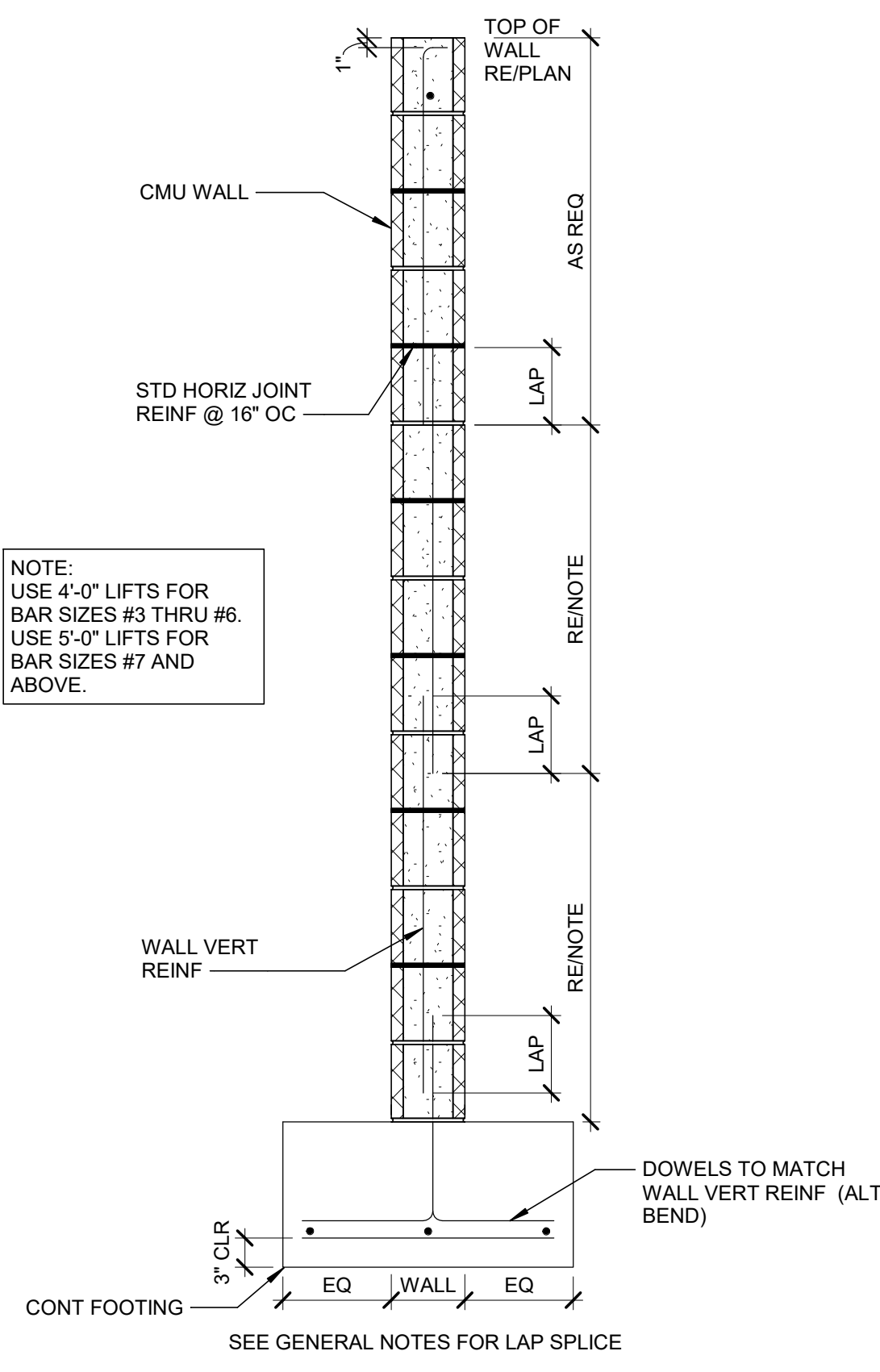
CONCRETE MASONRY PIER SCHEDULE

MARK	SIZE		REINFORCING		PIER TYPE	REMARKS
	W	L	VERTICAL	TIES		
MP-1	-	-	-	-	-	
MP-2	-	-	-	-	-	
MP-3	-	-	-	-	-	

NOTES:
1. GROUT SOLID ALL PIERS FULL HEIGHT. REFER TO PLANS FOR LOCATIONS AND EXTENT OF PIERS
2. WALL HORIZONTAL REINF SHALL BE PLACED INSIDE THE VERTICALS OF MASONRY PIERS
3. DOWELS TO MATCH PIER VERTICAL REINF AND SHALL BE TIED WITH #3 TIES @ 6" OC IN FOUNDATION

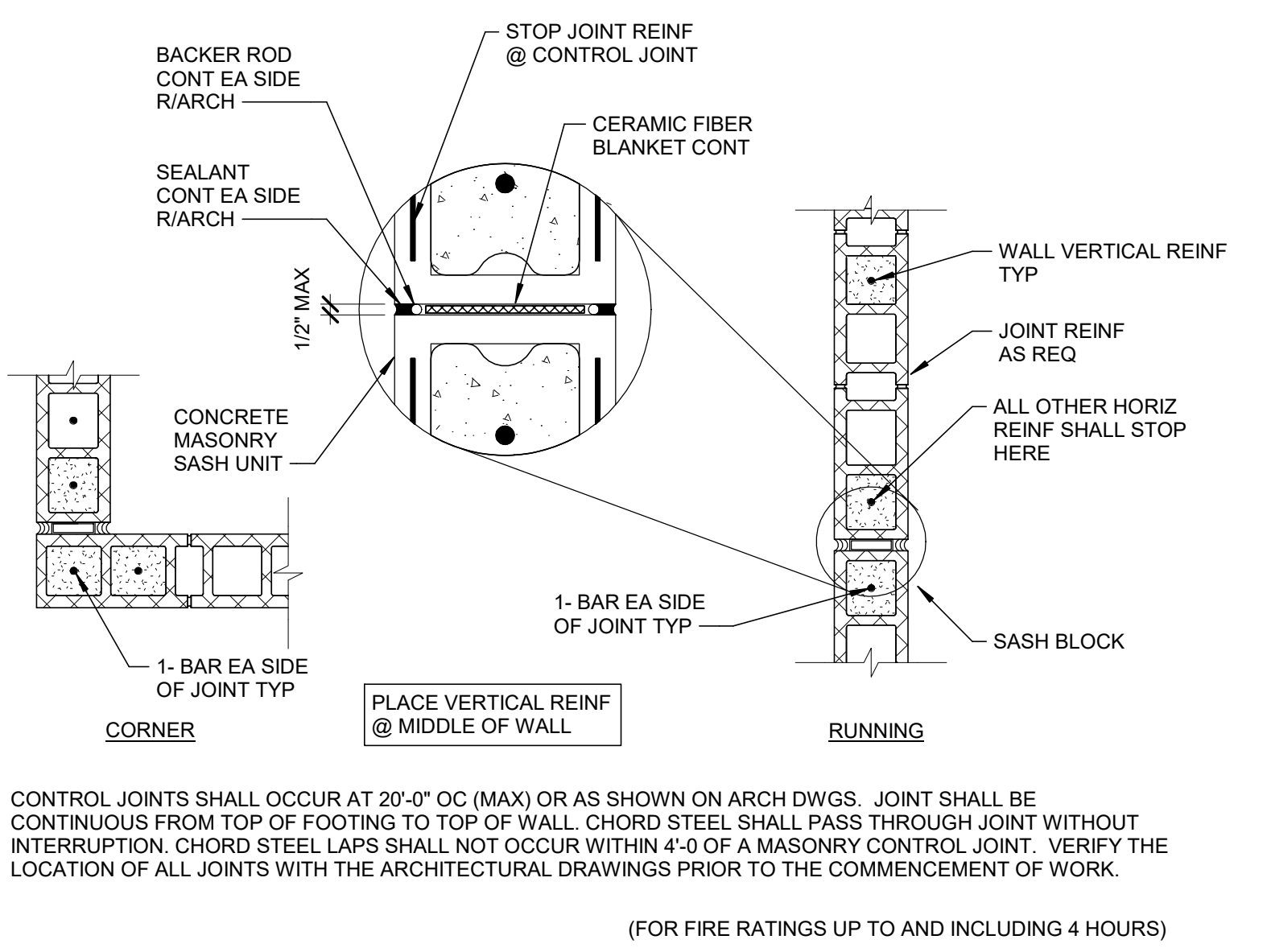


9 TYPICAL MASONRY PIER DETAILS
SS-600 SCALE: 3/4" = 1'-0"

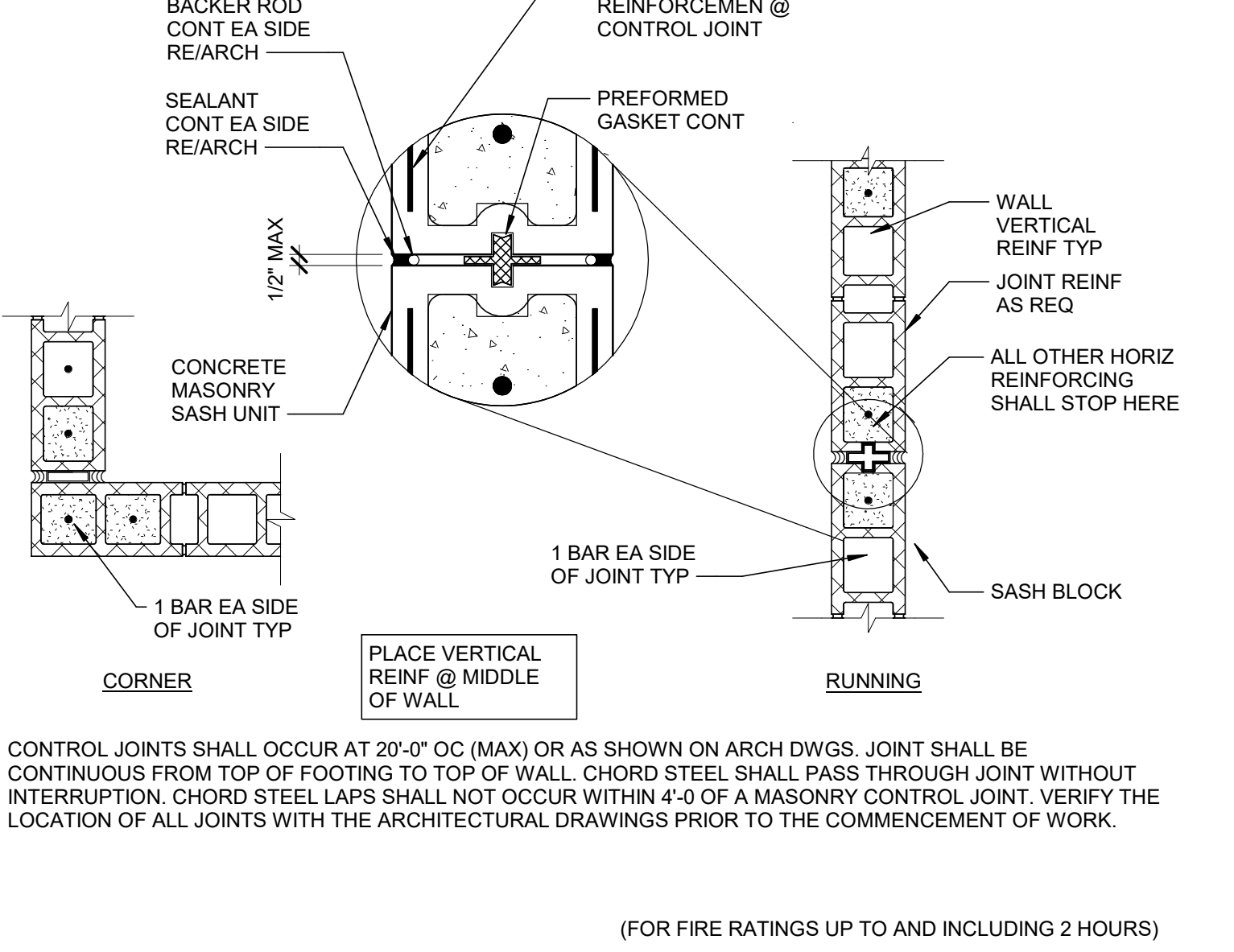


10 TYPICAL MASONRY VERTICAL REINFORCING
SS-600 SCALE: 3/4" = 1'-0"

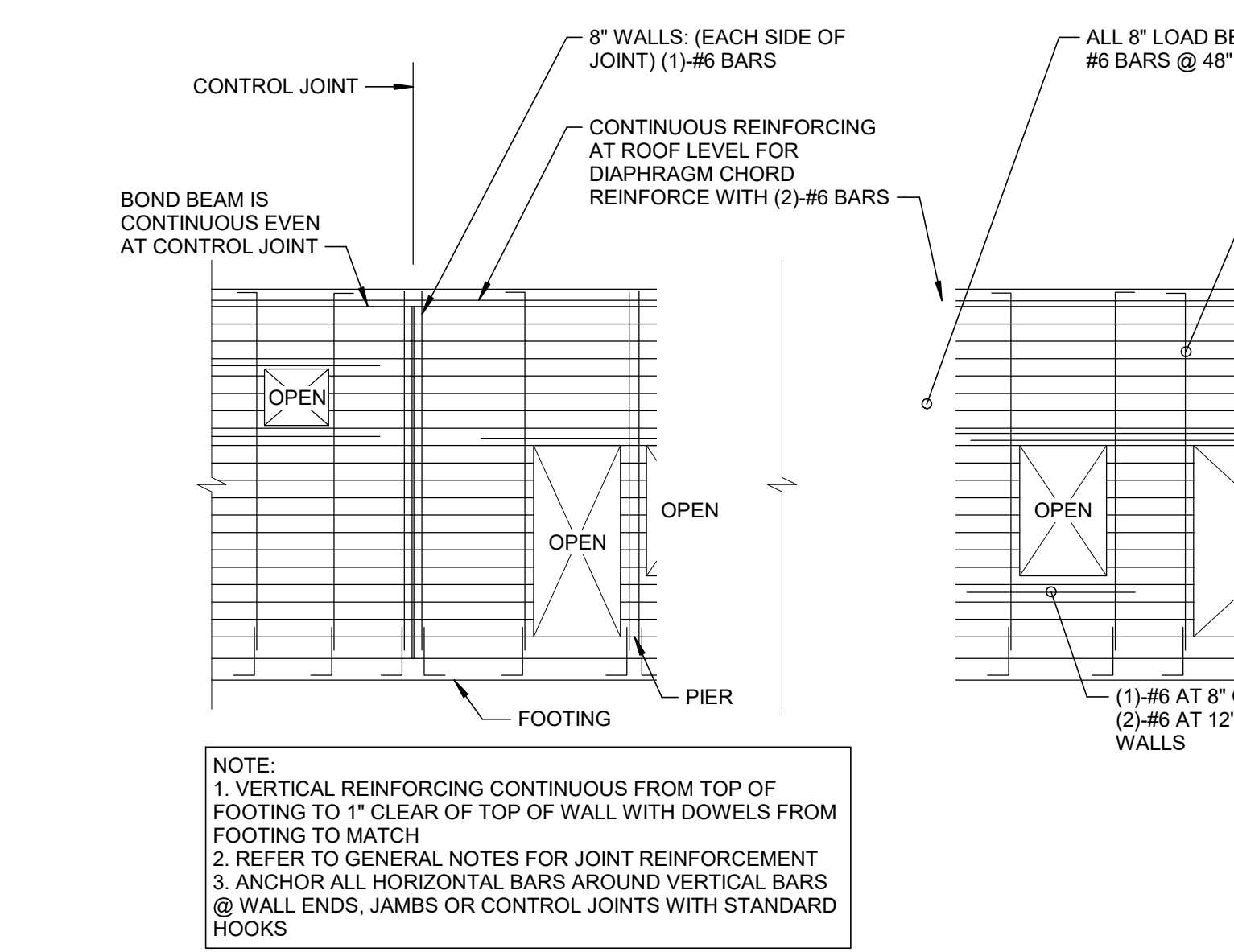
7 MASONRY SCHEDULE
SS-600 SCALE: 3/4" = 1'-0"



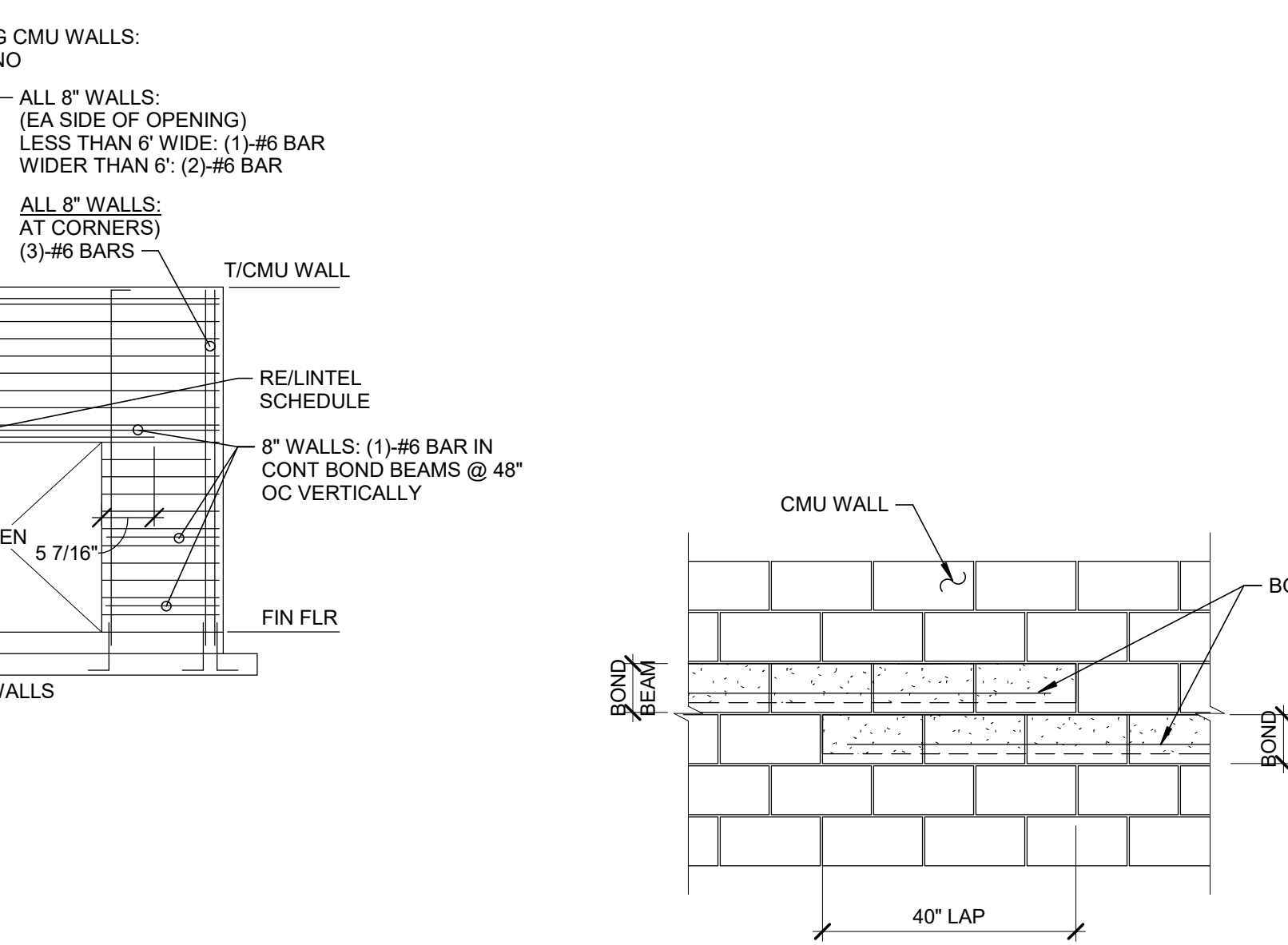
11 TYPICAL MASONRY WALL CONTROL JOINT
SS-600 SCALE: 3/4" = 1'-0"



12 TYPICAL STAR MASONRY WALL CONTROL JOINT
SS-600 SCALE: 3/4" = 1'-0"



13 TYPICAL MASONRY WALL ELEVATION
SS-600 SCALE: 3/4" = 1'-0"



15 TYPICAL STEPPED BOND BEAM
SS-600 SCALE: 3/4" = 1'-0"