

Issued For BULLETIN 05/25/2022 www.ssoe.com

SEAL ON THIS DOCUMENT AUTHORIZED BY:

BROWNFIELD MODIFICATIONS

CLIENT INFORMATION:

ASCEND ELEMENTS
ASCEND ELEMENTS, INC
 9172 INDUSTRIAL DR NE
 COVINGTON, GA
 30014

CLIENT PROJECT NO: XXX-XXXX-XX

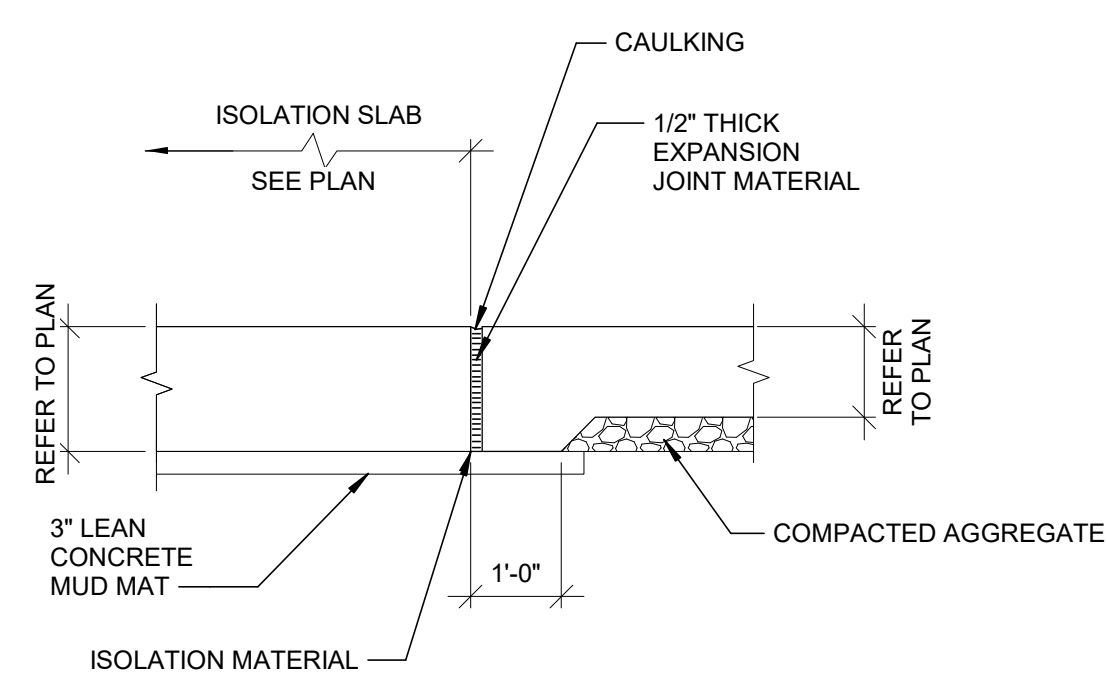
NO.	DATE	SUBJECT
B	05/24/22	BULLETIN NO. 1 - PKG 11C02
A	05/03/22	FOR CONSTRUCTION - PKG 11C02
NO.	DATE	SUBJECT
		REVISION OR ISSUE

SSOE, Inc.
 1001 Madison Avenue
 Toledo, OH 43604
 T. (419) 255-3830

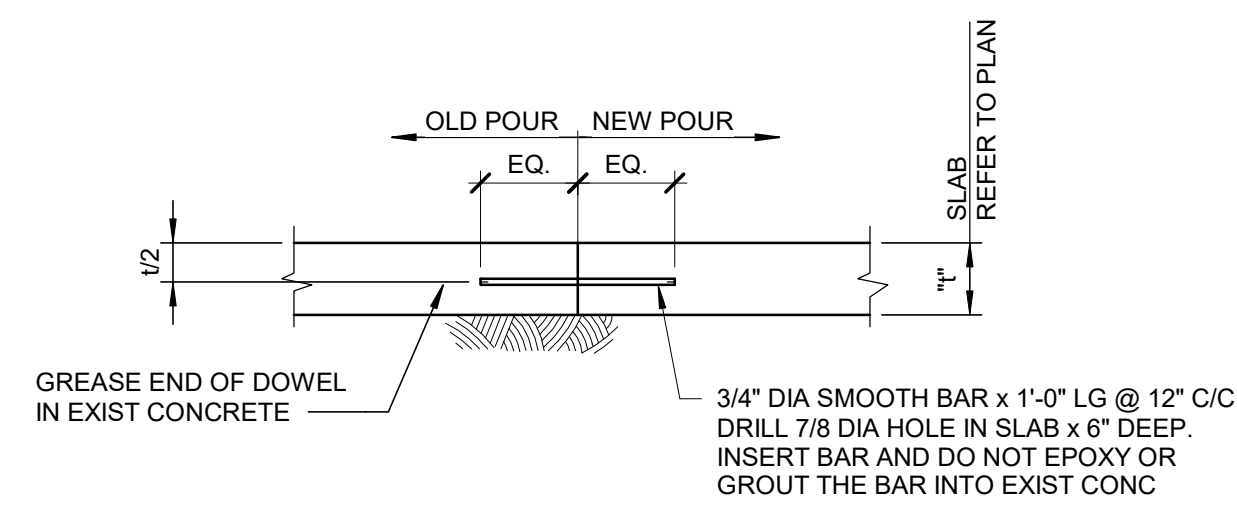
PROJECT NO: 021-01975-00
 PROJECT MANAGER: R. FOX
 DESIGNED: H. FIRSTER
 CHECKED: D. LYKINS

DRAWING TITLE:
TYPICAL FOUNDATION DETAILS

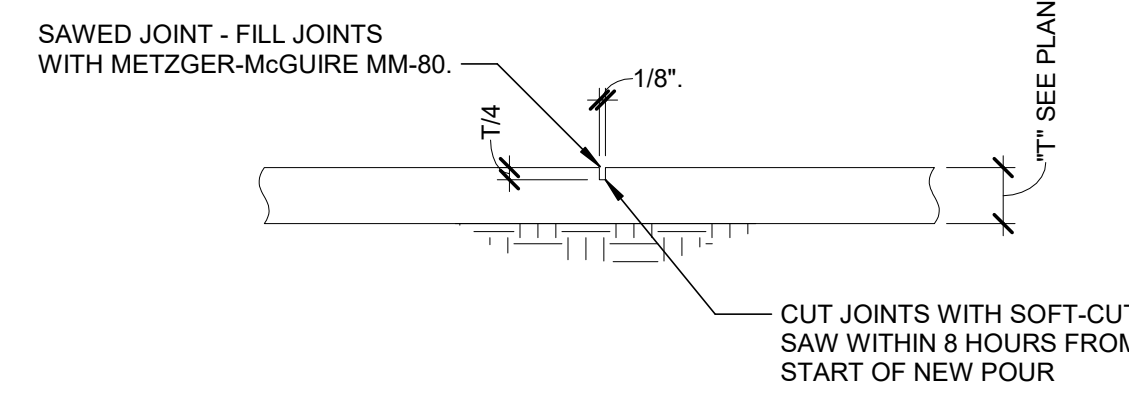
DRAWING NO:
SC-500



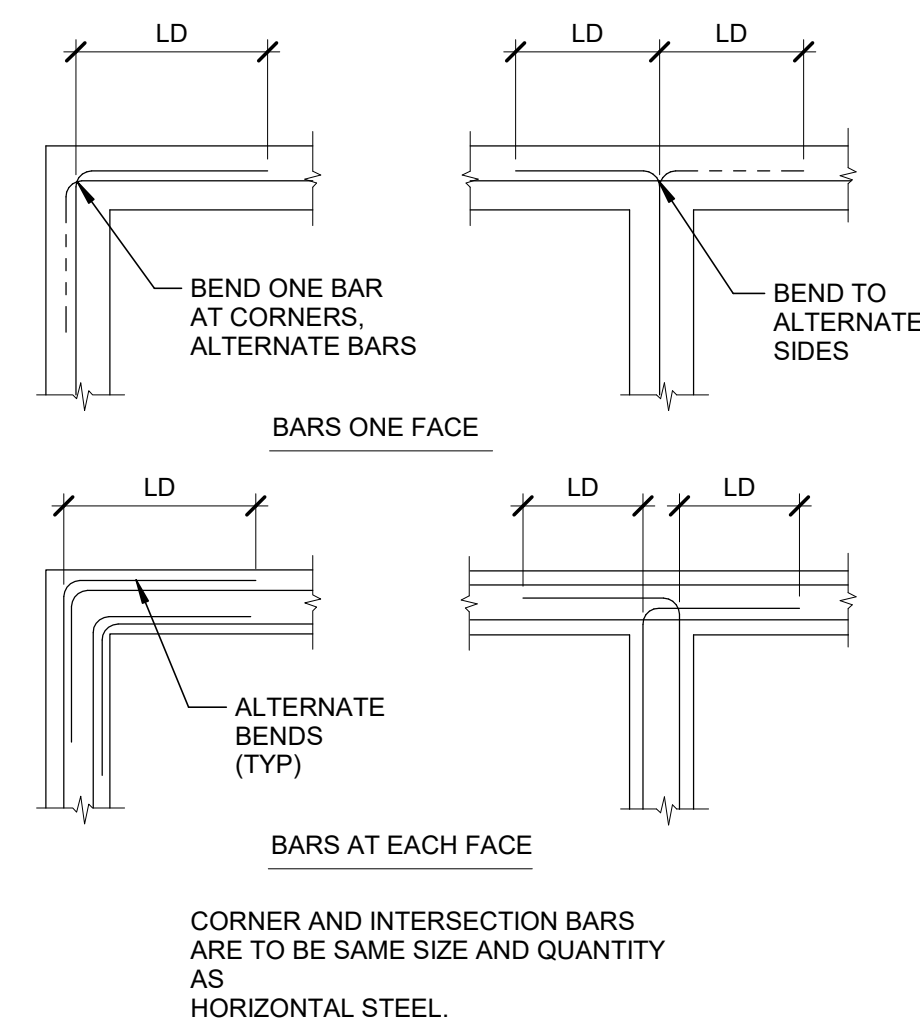
1 TYPICAL SLAB ISOLATION JOINT DETAIL
 SC-500 SCALE: 1/2" = 1'-0"



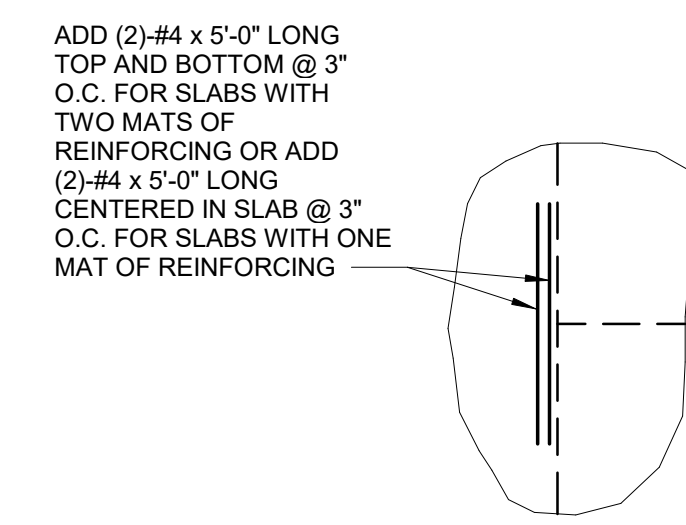
2 TYPICAL SLAB CONSTRUCTION JOINT SECTION
 SC-500 SCALE: 1/2" = 1'-0"



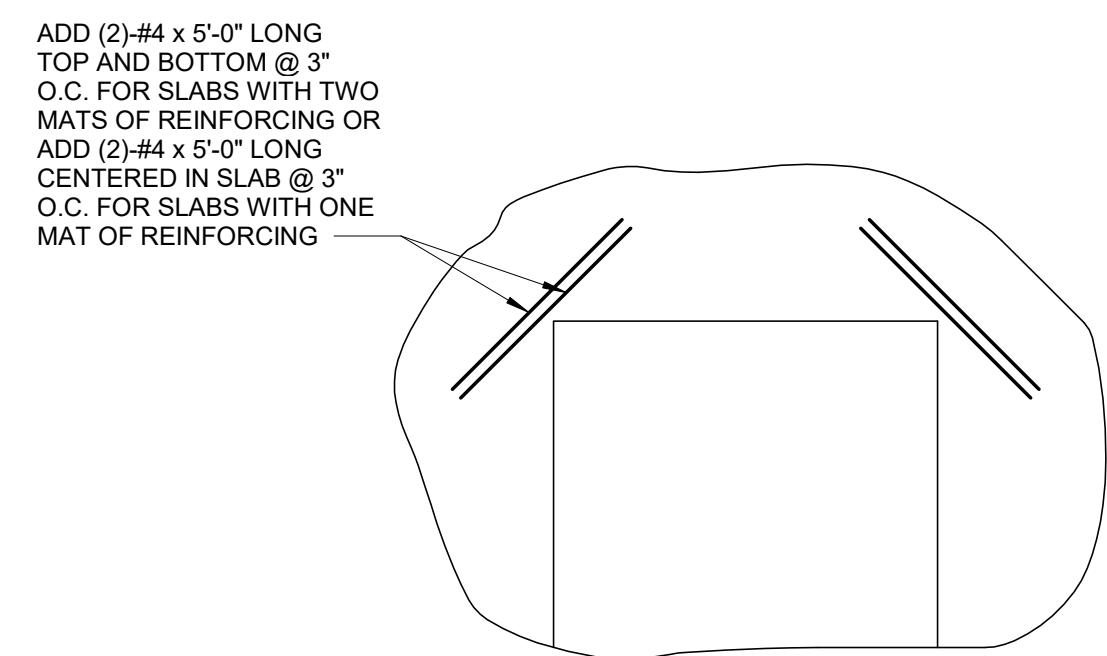
3 TYPICAL SLAB CONTROL JOINT "CJ"
 SC-500 SCALE: 1/2" = 1'-0"



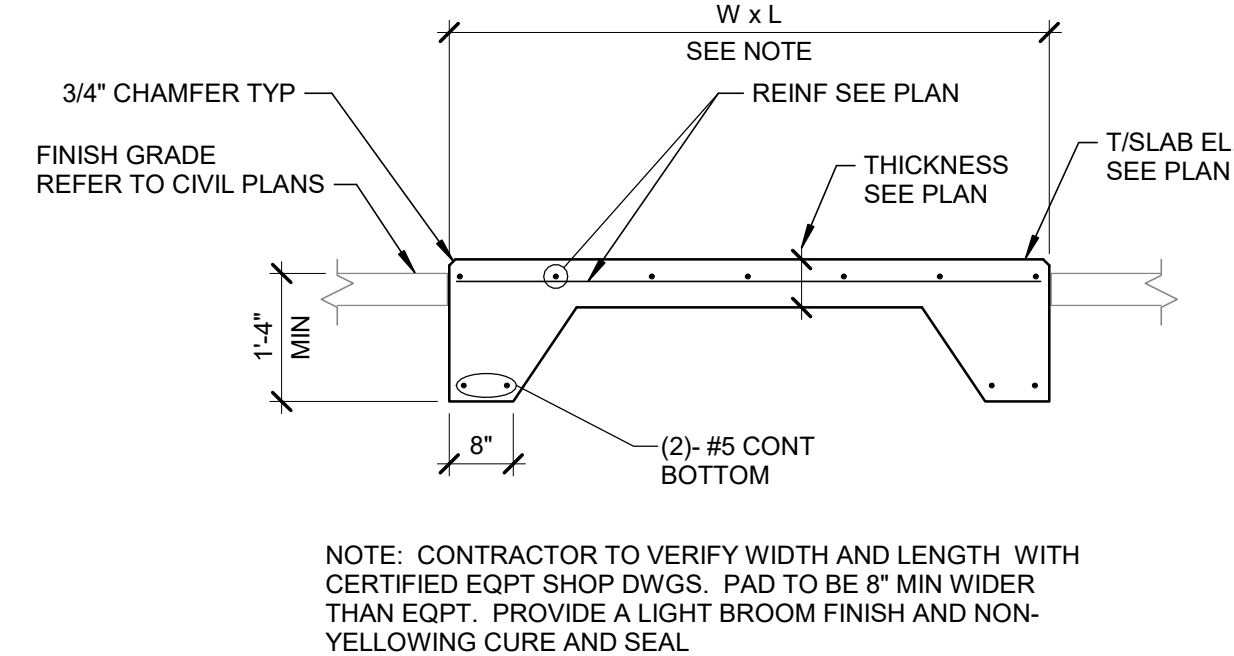
4 TYPICAL CONCRETE WALLS & FOOTINGS AT CORNERS & INTERSECTIONS
 SC-500 SCALE: 3/4" = 1'-0"



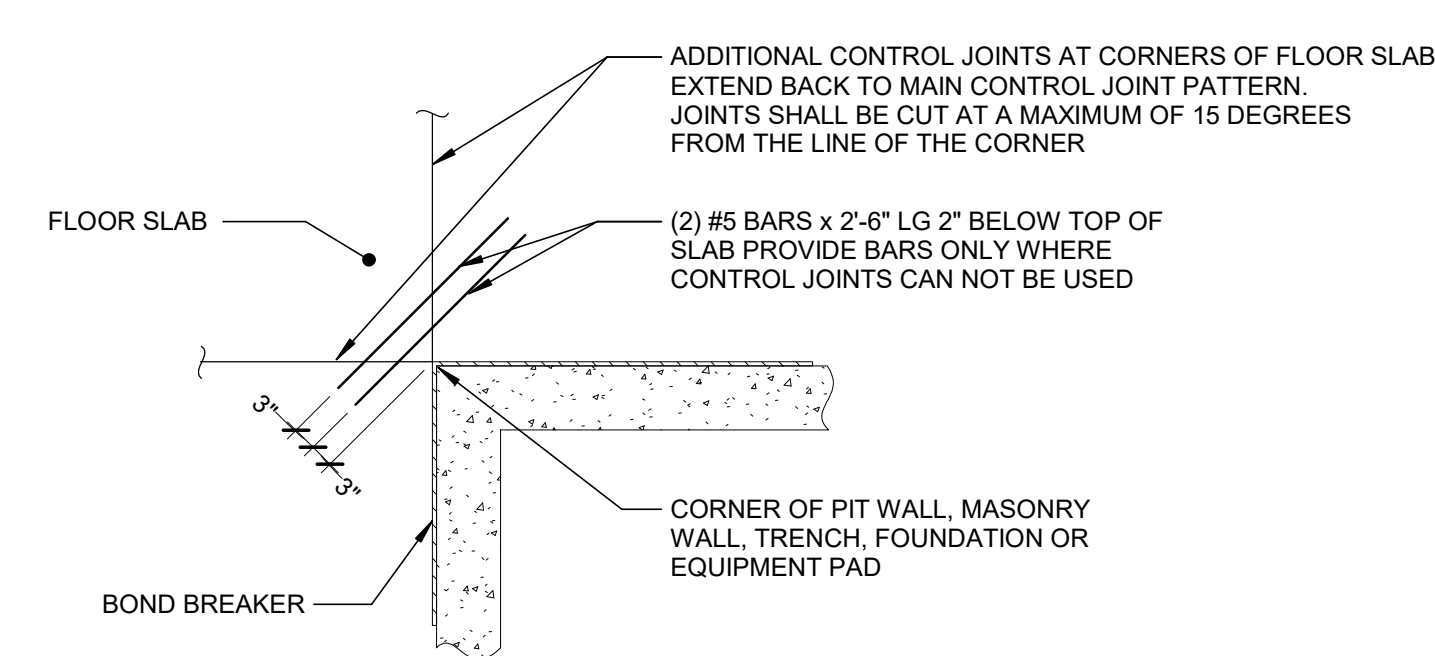
5 TYPICAL REINFORCING IN SLAB @ CONTROL JOINT 'T' INTERSECTION
 SC-500 SCALE: 1/4" = 1'-0"



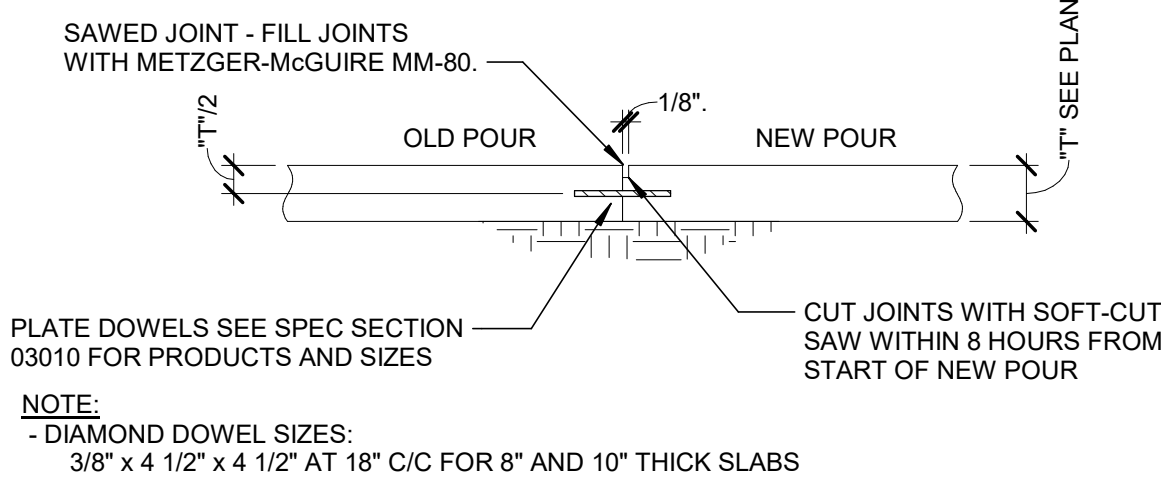
6 TYPICAL SLAB AT REENTRANT CORNERS
 SC-500 SCALE: 1/4" = 1'-0"



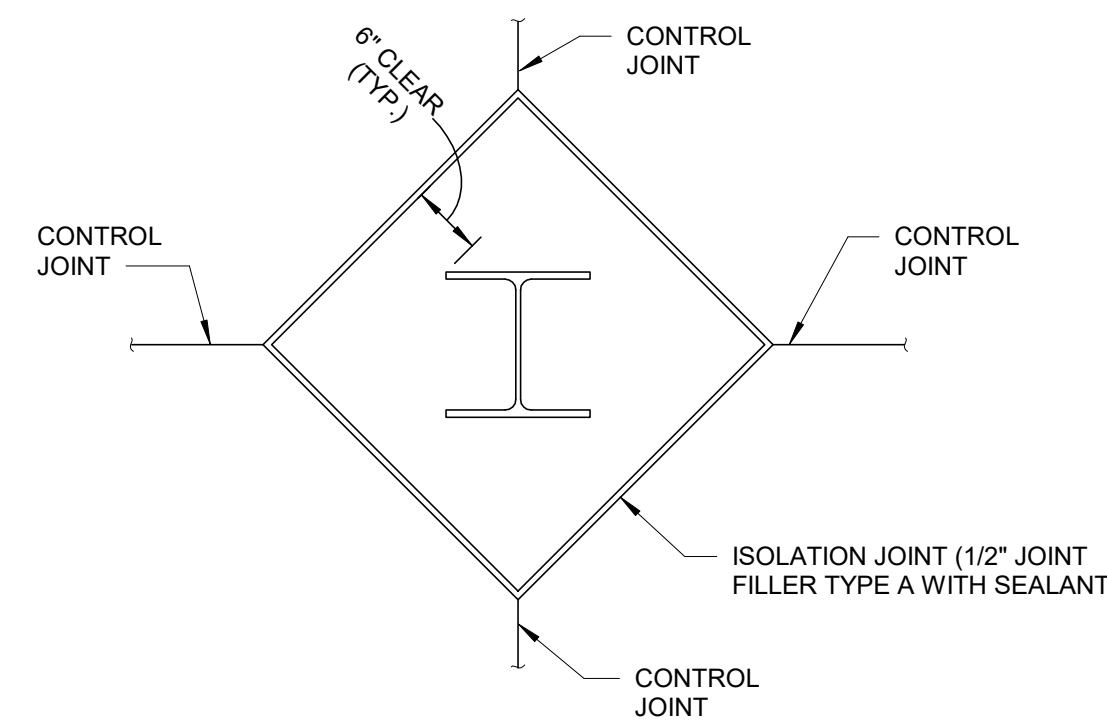
7 TYPICAL EQUIPMENT PAD DETAIL
 SC-500 SCALE: 1/2" = 1'-0"



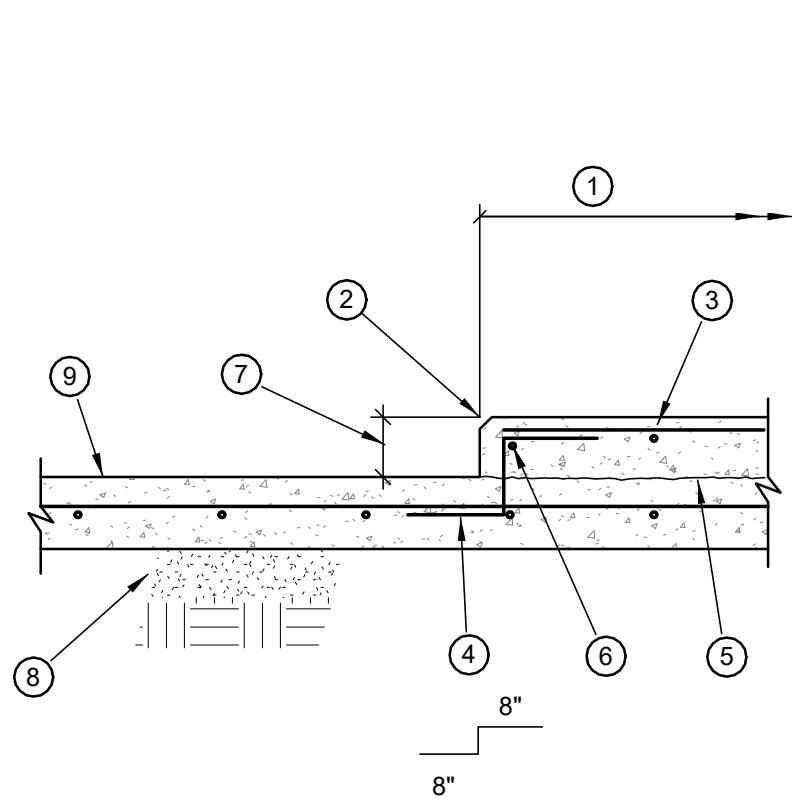
8 SLAB CONTROL JOINT AT CORNERS
 SC-500 SCALE: 1/2" = 1'-0"



9 SLAB CONSTRUCTION JOINT
 SC-500 SCALE: 1/2" = 1'-0"

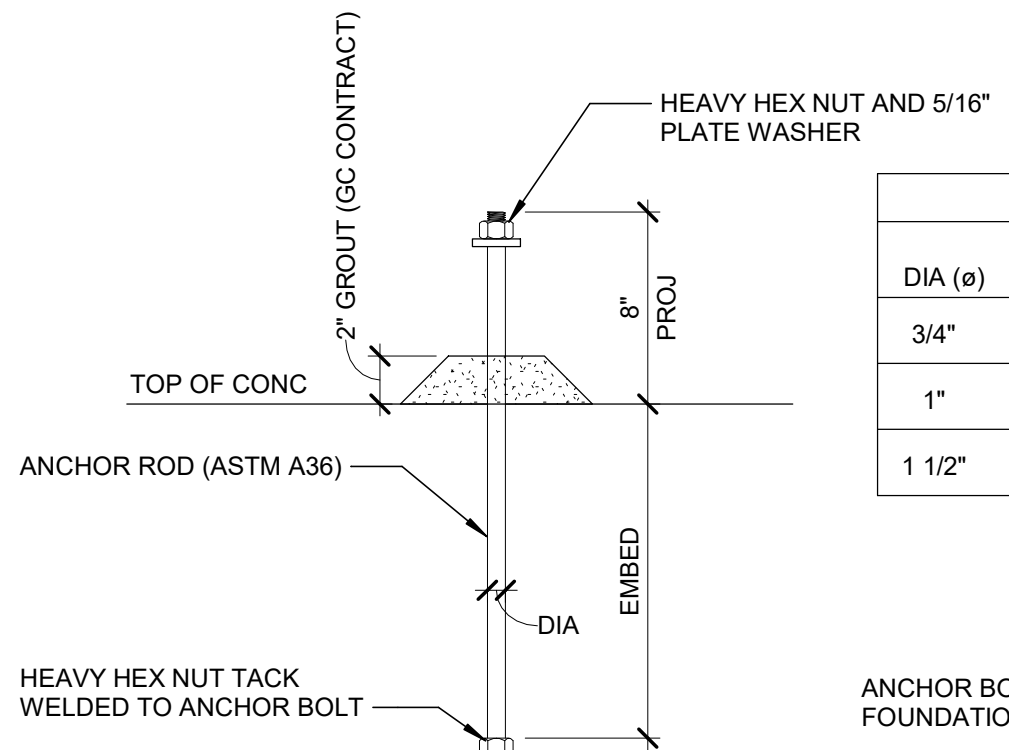


10 SLAB CONTROL JOINTS AT INTERIOR COLUMNS
 SC-500 SCALE: 3/4" = 1'-0"



11 EQUIP PAD ON SLAB ON GRADE
 SC-500 SCALE: 1/2" = 1'-0"

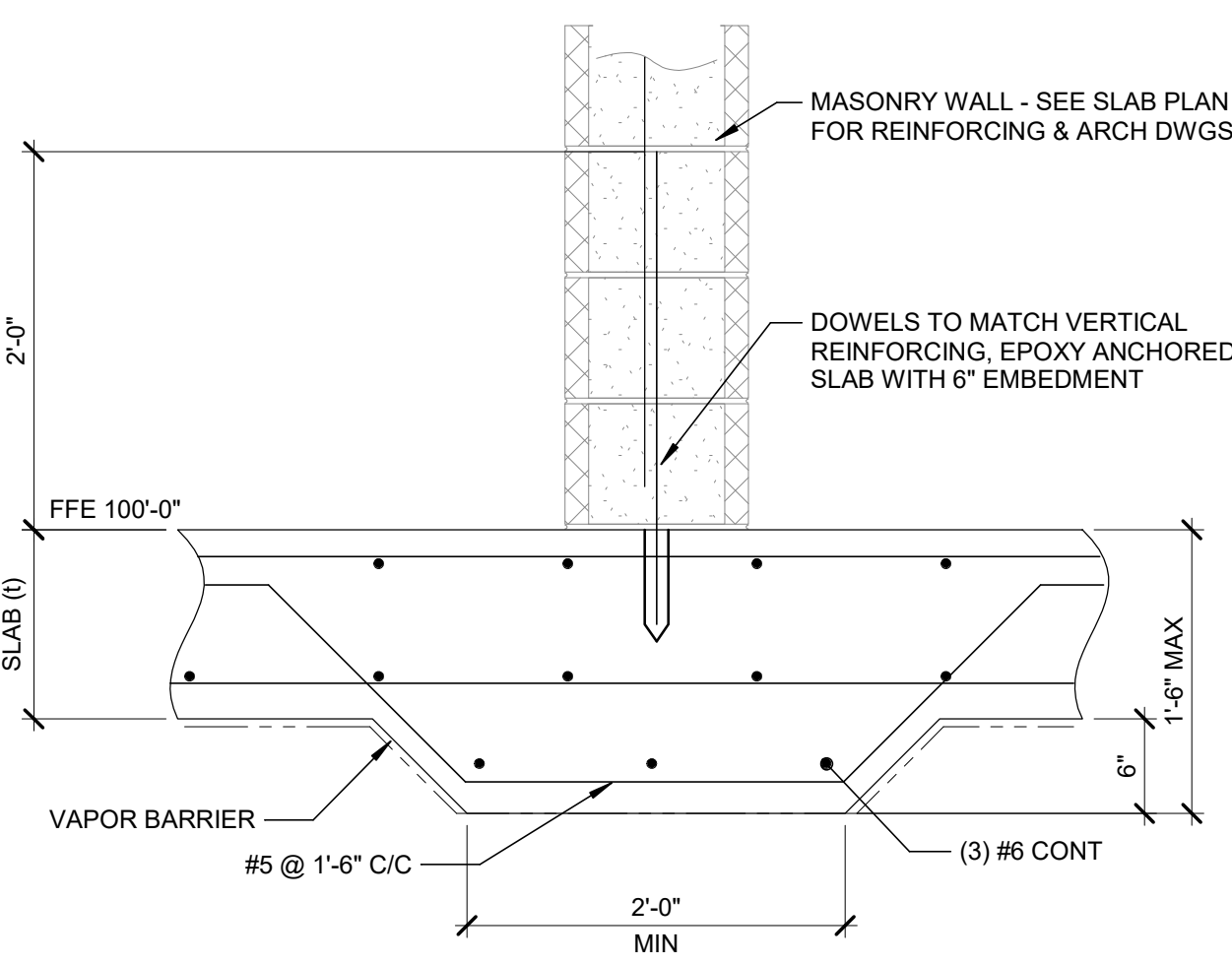
- PAD SIZE: 1'-0" EACH WAY LARGER THAN EQUIPMENT BASE. OR SEE PLAN FOR SIZE.
- CHAMFER ALL SIDES 3/4" TYP.
- #4 AT 12"oc EA WAY, 1" CLEAR FROM TOP.
- #4 TIE @ 12" ON CENTER AROUND PERIMETER AND ALL OPENINGS. MAY SUBSTITUTE LENTON FORM SAVERS.
- CONSTRUCTION JOINT, ROUGHEN SURFACE TO 1/4" AMPLITUDE AND APPLY BONDING AGENT.
- #4 CONT. AROUND PERIMETER.
- 3-1/2" TYPICAL UNLESS NOTED OTHERWISE ON PLAN.
- SEE GENERAL NOTES FOR UNDERSLAB REQUIREMENTS.
- SLAB ON GRADE AND REINFORCING, RE. PLAN.



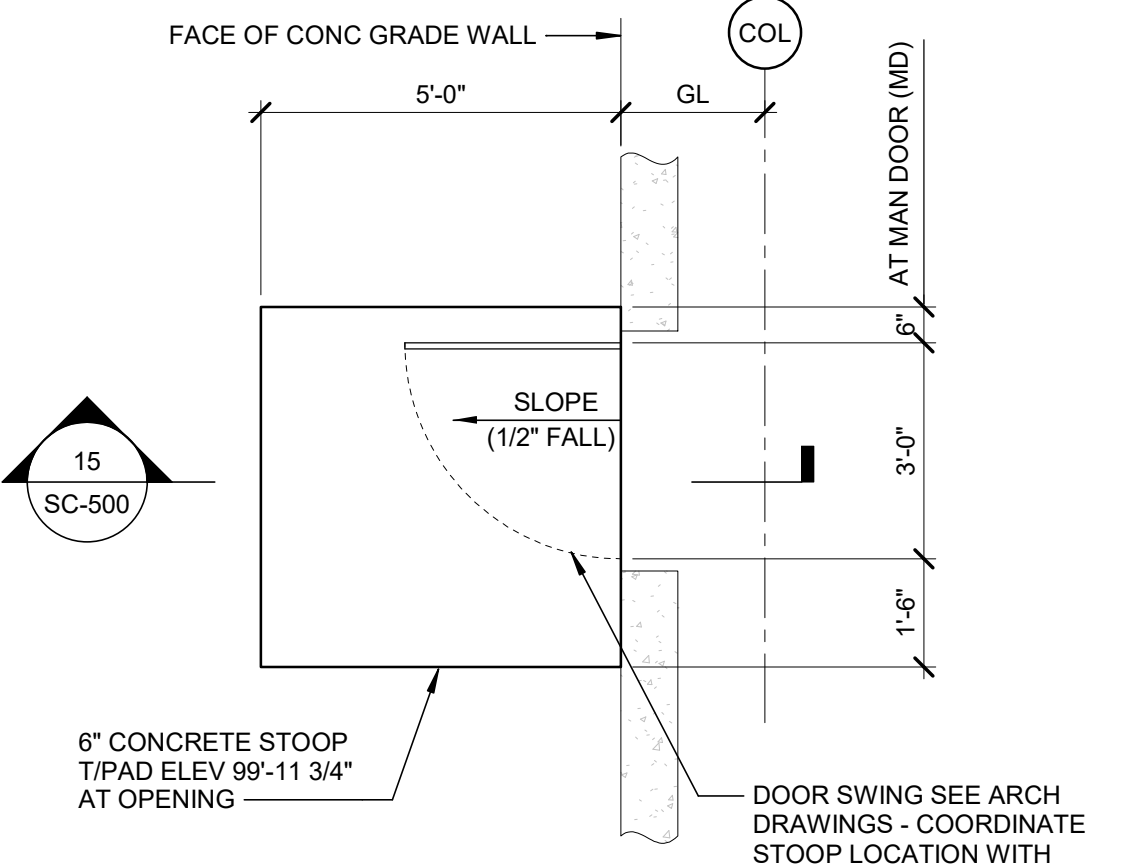
12 TYPICAL ANCHOR BOLT DETAIL
 SC-500 SCALE: 1 1/2" = 1'-0"

ANCHOR BOLT SCHEDULE				REMARKS
DIA (ø)	EMBED	RECOMMENDED BASE PLATE HOLE ø	MINIMUM WASHER SIZE	
3/4"	1'-3"	1 5/16"	1/4" x 2"	PROVIDE 9" EMBED IN 12" THICK FOOTINGS
1"	1'-6"	1 13/16"	3/8" x 3"	PROVIDE 2'-0" EMBEDMENT & GRADE 55 FOR COLUMN TYPE D
1 1/2"	1'-11"	2 5/16"	1/2" x 3 1/2"	REFER TO CRANE COLUMN ANCHOR BOLT DETAIL

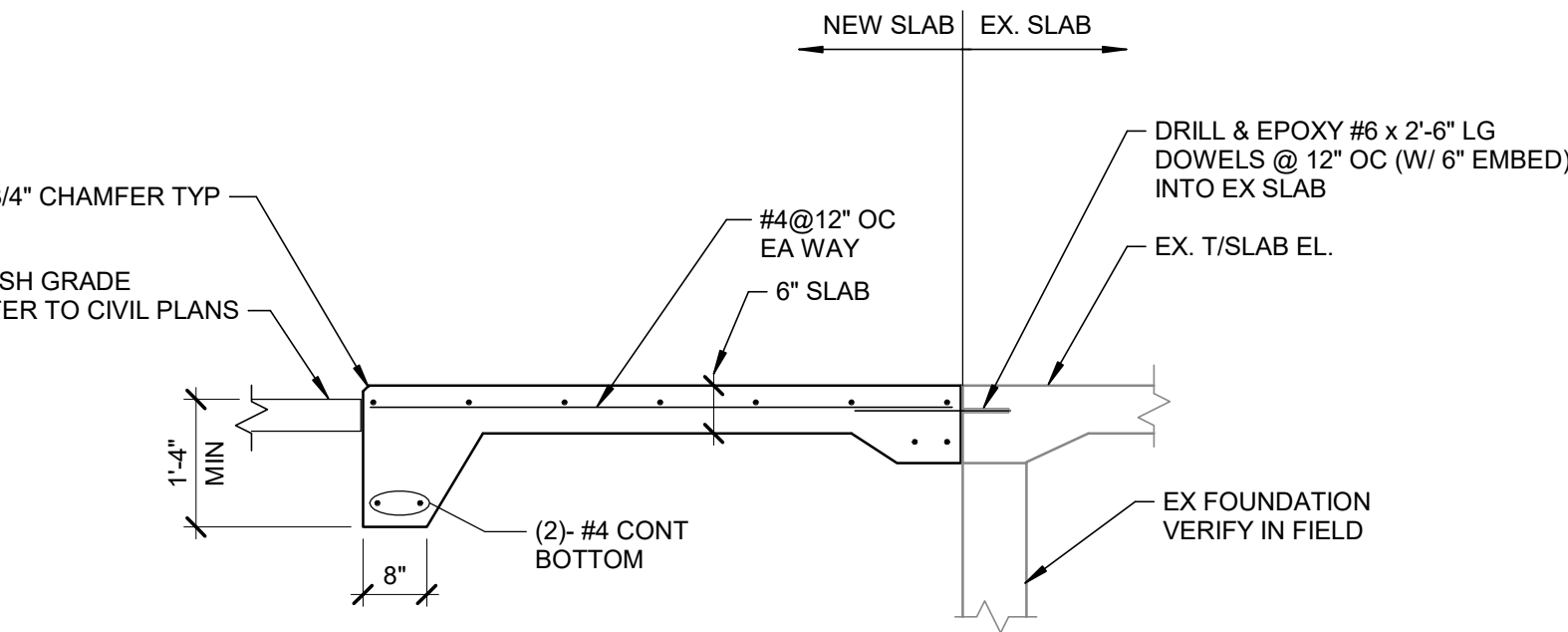
ANCHOR BOLTS SHALL BE SUPPLIED BY SS CONTRACT AND SET BY FOUNDATION CONTRACTOR. FOUNDATION CONTRACTOR SHALL INSTALL ANCHOR BOLTS BASED ON APPROVED SETTING PLAN PREPARED BY SS CONTRACT



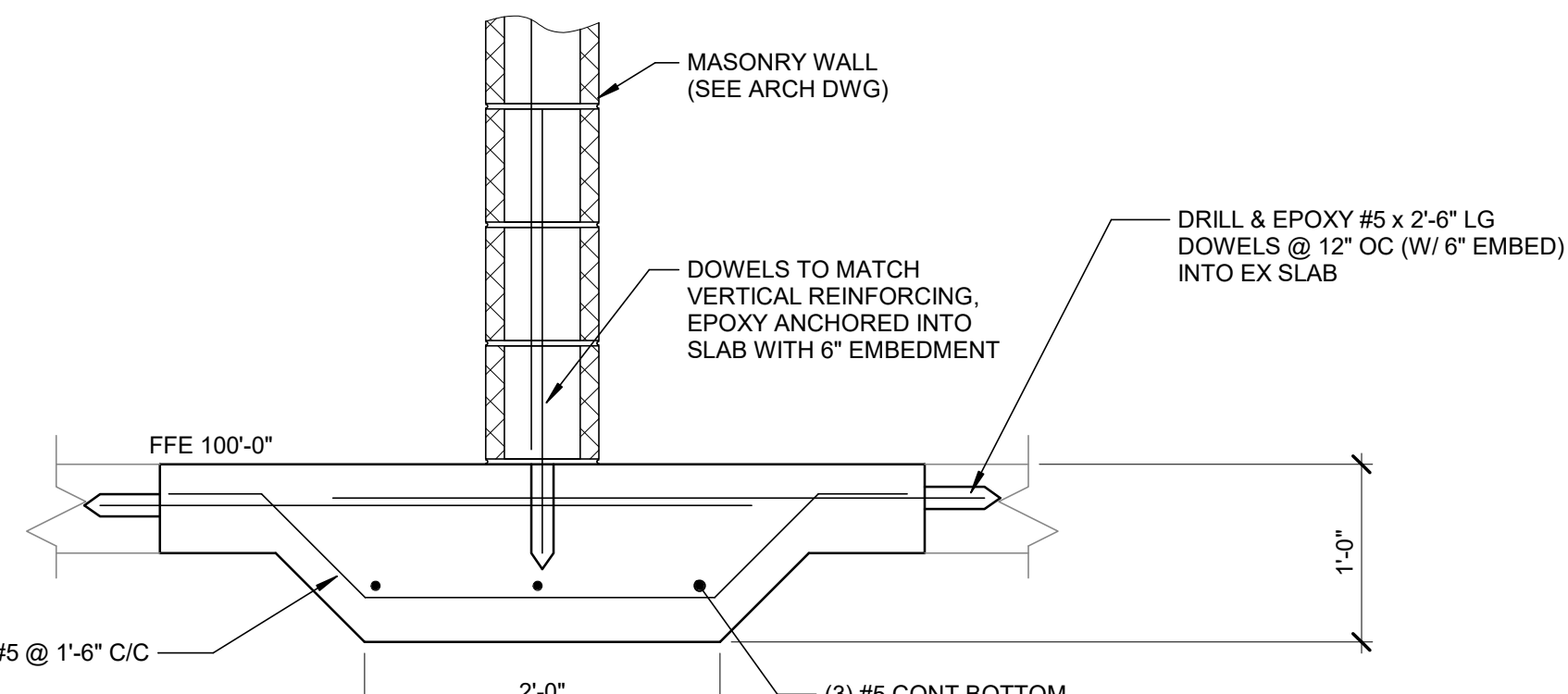
13 THICKENED SLAB UNDER INTERIOR CMU WALL (URT AREA)
 SC-500 SCALE: 1" = 1'-0"



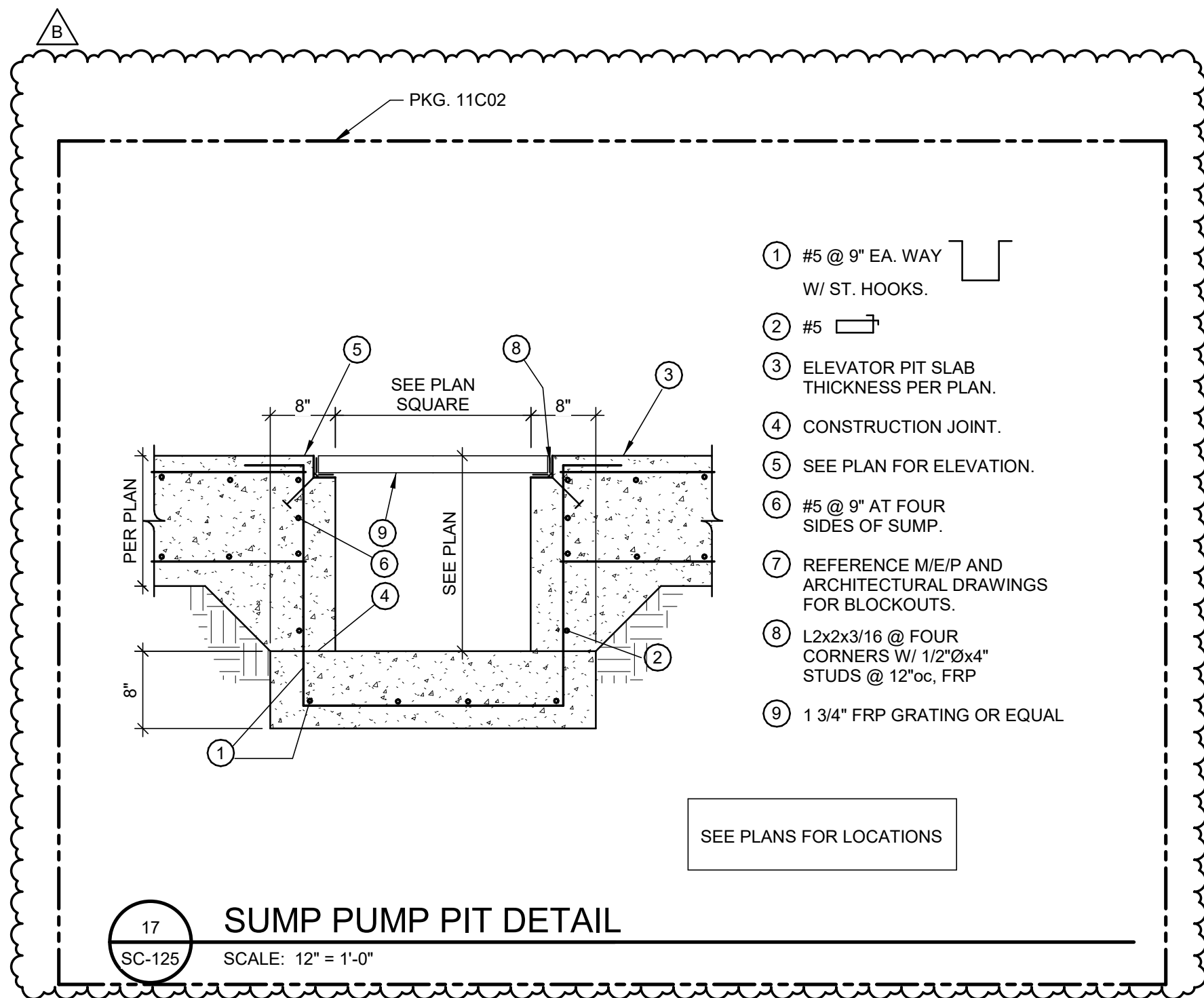
14 EXTERIOR MAN DOOR STOOP PLAN
 SC-500 SCALE: 3/8" = 1'-0"



15 TYPICAL PAD AT MAN DOOR
 SC-500 SCALE: 1/2" = 1'-0"



16 THICKENED SLAB UNDER INTERIOR CMU WALL (OFFICE AREA)
 SC-125 SCALE: 1" = 1'-0"



17 SUMP PUMP PIT DETAIL
 SC-125 SCALE: 1/2" = 1'-0"

- #5 @ 9" EA. WAY W/ ST. HOOKS.
- #5
- ELEVATOR PIT SLAB THICKNESS PER PLAN.
- CONSTRUCTION JOINT.
- SEE PLAN FOR ELEVATION.
- #5 @ 9" AT FOUR SIDES OF SUMP.
- REFERENCE M/E/P AND ARCHITECTURAL DRAWINGS FOR BLOCKOUTS.
- L2x2x3/16 @ FOUR CORNERS W/ 1/2"x4" STUDS @ 12"oc. FRP
- 1 3/4" FRP GRATING OR EQUAL